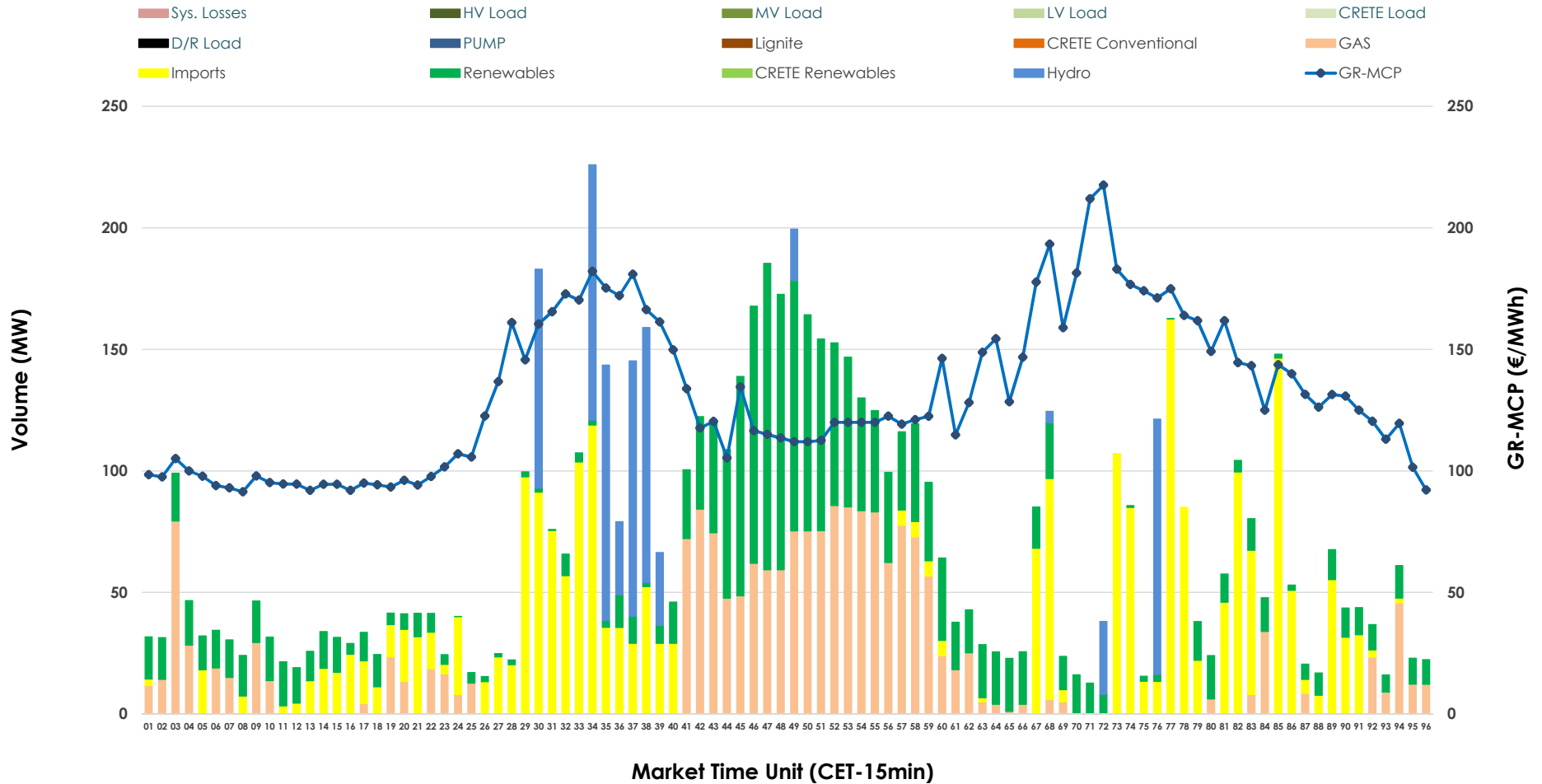


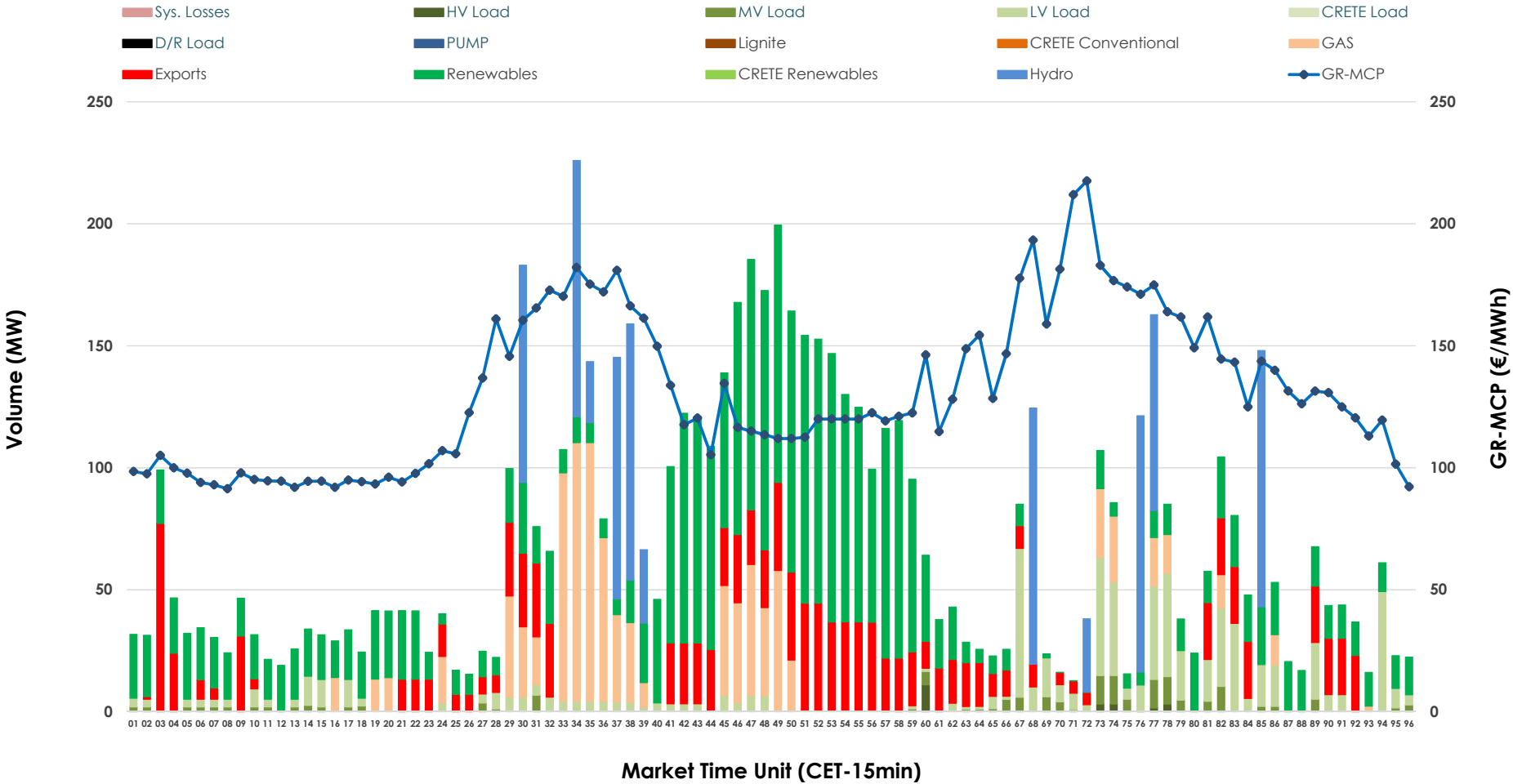


# IDA '2' Market Outlook

09.02.2026 IDA '2' Market - Sell



### 09.02.2026 IDA '2' Market - Buy



### GR Bidding Zone Weekly Figures

Delivery Day	03.02	04.02	05.02	06.02	07.02	08.02	09.02
	👇 -4%	👇 -17%	👉 3%	➡ 0%	👇 -17%	👉 18%	👆 43%
<b>Avg.MCP (€/MWh)</b>	109.49	91.23	93.97	94.02	78.28	92.03	131.37
<b>Max.MCP (€/MWh)</b>	226.78	143.17	160.61	138.97	147.50	136.14	217.55
<b>Min.MCP (€/MWh)</b>	57.32	24.69	47.50	36.39	-2.23	8.64	91.39
	👇 -25%	👇 -50%	👆 56%	👇 -28%	👆 226%	👇 -27%	👇 -30%
<b>Tot.Vol(GWh)</b>	3.71	1.87	2.91	2.08	6.80	4.96	3.49

### Trades by Order Type

Delivery Day		03.02	04.02	05.02	06.02	07.02	08.02	09.02	
<b>Ord Price Type</b>		<b>Sell &amp; Buy Trades in (GWh) per Price Type</b>							<b>(%)</b>
<b>PPT</b>	(S)	0.000	0.000	0.000	0.000	0.000	0.000	0.000	0.00%
<b>HBD</b>	(S)	1.676	0.903	1.006	0.971	2.916	2.161	1.173	67.22%
<b>BLK</b>	(S)	0.000	0.000	0.000	0.000	0.000	0.000	0.000	0.00%
<b>CPL</b>	(S)	0.180	0.032	0.450	0.071	0.481	0.320	0.572	32.78%
<b>PPT</b>	(B)	0.000	0.000	0.000	0.000	0.000	0.000	0.000	0.00%
<b>HBD</b>	(B)	0.848	0.690	1.001	0.995	3.052	2.212	1.435	82.20%
<b>BLK</b>	(B)	0.000	0.000	0.000	0.000	0.000	0.000	0.000	0.00%
<b>CPL</b>	(B)	1.008	0.246	0.456	0.046	0.346	0.269	0.311	17.80%
		<b>Sell &amp; Buy Orders Traded per Price Type</b>							<b>(%)</b>
<b>PPT</b>	(S)	0	0	0	0	0	0	0	0.00%
<b>HBD</b>	(S)	162	181	422	218	338	210	274	100.00%
<b>BLK</b>	(S)	0	0	0	0	0	0	0	0.00%
<b>PPT</b>	(B)	0	0	0	0	0	0	0	0.00%
<b>HBD</b>	(B)	488	336	348	487	389	477	493	100.00%
<b>BLK</b>	(B)	0	0	0	0	0	0	0	0.00%

**MCP** Market Clearing Price (€/MWh)  
**PPT** Priority Price-Taking  
**HBD** Hybrid  
**BLK** Block  
**CPL** Market Coupling Flow

### Trade's Volume Mix

	Sell - MWh	Buy - MWh	
<b>Lignite</b> (0.0%)	0	0	(0.0%)
<b>Crete Conv.</b> (0.0%)	0	0	(0.0%)
<b>Gas</b> (27.2%)	475	244	(14.0%)
<b>Hydro</b> (10.5%)	183	220	(12.6%)
<b>Imports</b> (32.8%)	572		
<b>RES</b> (29.5%)	515	747	(42.8%)
<b>Crete RES</b> (0.0%)	0	0	(0.0%)
<b>HV Load</b> (0.0%)	0	6	(0.3%)
<b>MV Load</b> (0.0%)	0	39	(2.2%)
<b>LV Load</b> (0.0%)	0	180	(10.3%)
<b>Crete Load</b> (0.0%)	0	0	(0.0%)
<b>Pumping</b> (0.0%)	0	0	(0.0%)
<b>Exports</b>		311	(17.8%)
<b>Sys.Losses</b> (0.0%)	0	0	(0.0%)
<b>D/R Load</b> (0.0%)	0	0	(0.0%)

