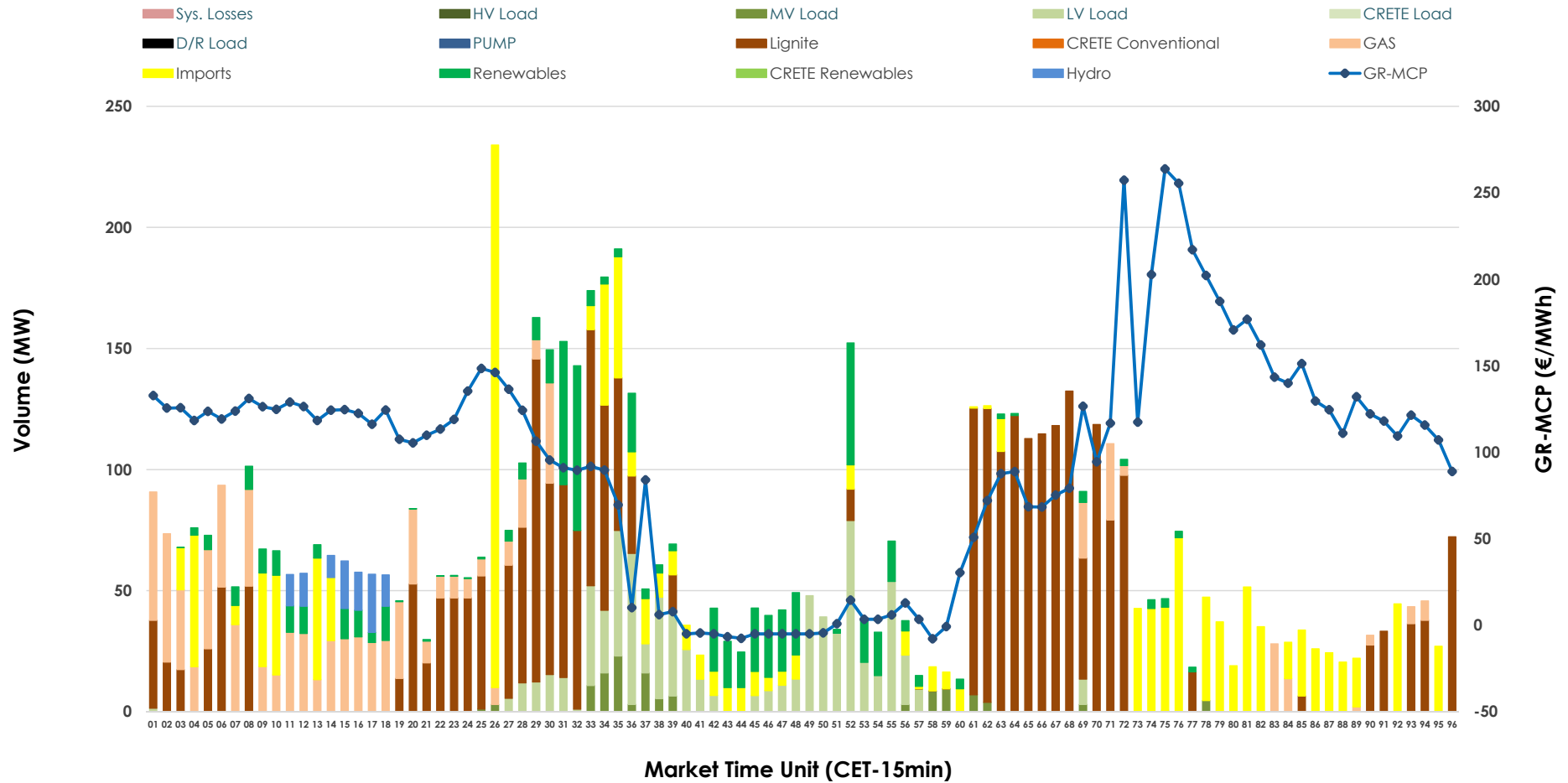


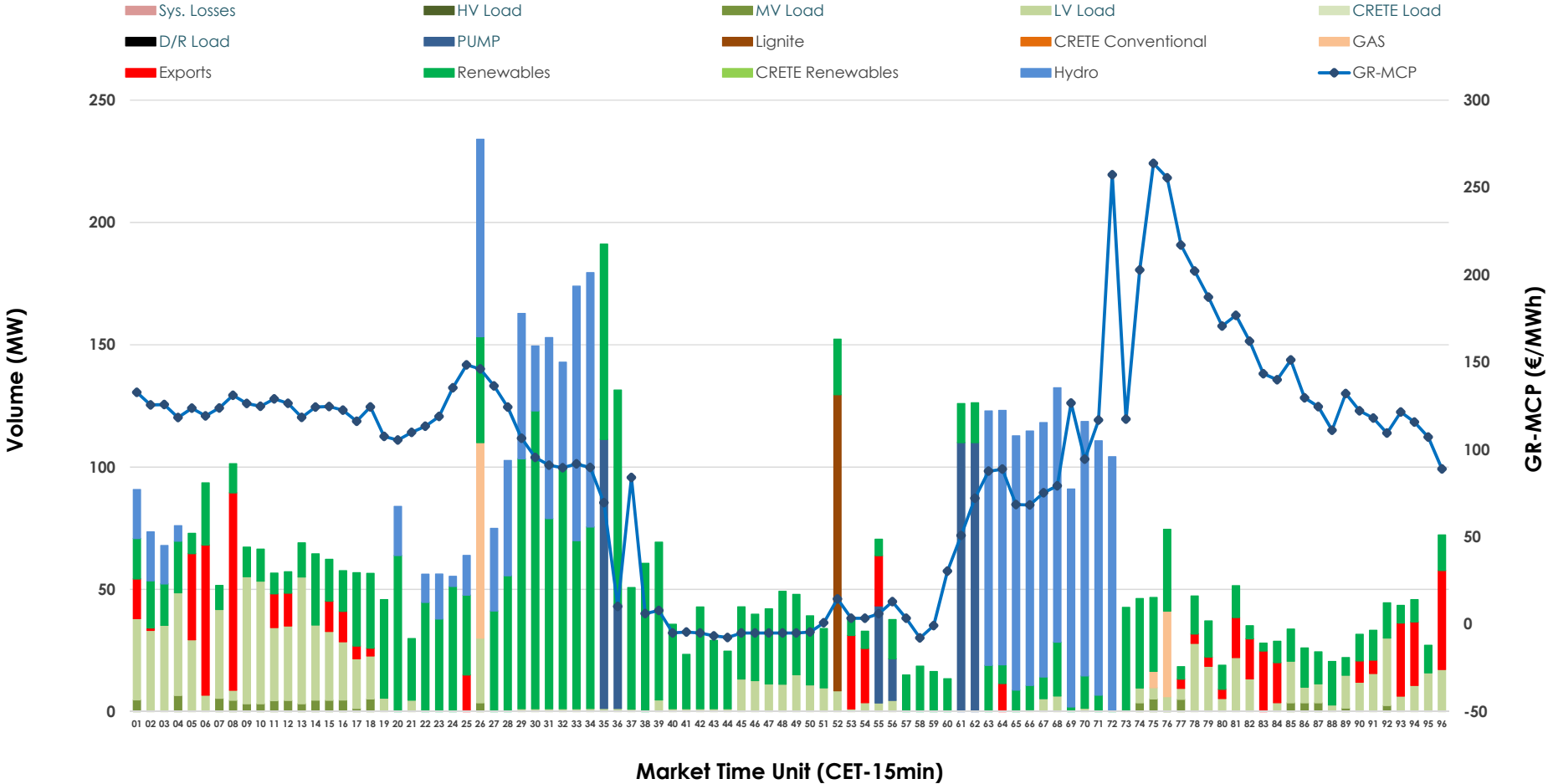


# IDA '2' Market Outlook

04.03.2026 IDA '2' Market - Sell



### 04.03.2026 IDA '2' Market - Buy



### GR Bidding Zone Weekly Figures

Delivery Day	26.02	27.02	28.02	01.03	02.03	03.03	04.03
	👇 -4%	👆 25%	👇 -23%	👇 -31%	👆 130%	👆 35%	👇 -13%
<b>Avg.MCP (€/MWh)</b>	52.41	65.67	50.54	35.08	80.72	109.02	94.68
<b>Max.MCP (€/MWh)</b>	130.70	148.51	105.45	115.24	256.35	254.11	263.83
<b>Min.MCP (€/MWh)</b>	-35.00	-7.89	-20.07	-35.00	-29.06	9.57	-7.85
	👆 3%	👆 9%	👆 299%	👇 -73%	👆 6%	👇 -2%	👇 -25%
<b>Tot.Vol(GWh)</b>	3.60	3.92	15.63	4.23	4.50	4.41	3.33

### Trades by Order Type

Delivery Day		26.02	27.02	28.02	01.03	02.03	03.03	04.03	
<b>Ord Price Type</b>		<b>Sell &amp; Buy Trades in (GWh) per Price Type</b>							<b>(%)</b>
<b>PPT</b>	(S)	0.000	0.000	0.000	0.000	0.000	0.000	0.000	0.00%
<b>HBD</b>	(S)	1.717	0.956	1.932	1.809	1.551	1.052	1.325	79.68%
<b>BLK</b>	(S)	0.000	0.000	0.000	0.000	0.000	0.000	0.000	0.00%
<b>CPL</b>	(S)	0.083	1.004	5.884	0.309	0.697	1.155	0.338	20.32%
<b>PPT</b>	(B)	0.000	0.000	0.000	0.000	0.000	0.000	0.000	0.00%
<b>HBD</b>	(B)	1.682	1.863	7.476	1.518	1.866	1.971	1.525	91.68%
<b>BLK</b>	(B)	0.000	0.000	0.000	0.000	0.000	0.000	0.000	0.00%
<b>CPL</b>	(B)	0.117	0.097	0.340	0.599	0.383	0.236	0.138	8.32%
		<b>Sell &amp; Buy Orders Traded per Price Type</b>							<b>(%)</b>
<b>PPT</b>	(S)	0	0	0	0	0	0	0	0.00%
<b>HBD</b>	(S)	254	213	205	253	221	261	137	100.00%
<b>BLK</b>	(S)	0	0	0	0	0	0	0	0.00%
<b>PPT</b>	(B)	0	0	0	0	0	0	0	0.00%
<b>HBD</b>	(B)	474	492	261	361	480	630	486	100.00%
<b>BLK</b>	(B)	0	0	0	0	0	0	0	0.00%

**MCP** Market Clearing Price (€/MWh)  
**PPT** Priority Price-Taking  
**HBD** Hybrid  
**BLK** Block  
**CPL** Market Coupling Flow

### Trade's Volume Mix

	Sell - MWh	Buy - MWh	
<b>Lignite</b> (42.2%)	702	30	(1.8%)
<b>Crete Conv.</b> (0.0%)	0	0	(0.0%)
<b>Gas</b> (13.4%)	222	30	(1.8%)
<b>Hydro</b> (1.6%)	27	433	(26.0%)
<b>Imports</b> (20.3%)	338		
<b>RES</b> (9.4%)	156	652	(39.2%)
<b>Crete RES</b> (0.0%)	0	0	(0.0%)
<b>HV Load</b> (0.0%)	0	0	(0.0%)
<b>MV Load</b> (1.9%)	31	23	(1.4%)
<b>LV Load</b> (11.2%)	186	250	(15.0%)
<b>Crete Load</b> (0.0%)	0	0	(0.0%)
<b>Pumping</b> (0.0%)	0	107	(6.5%)
<b>Exports</b>		138	(8.3%)
<b>Sys.Losses</b> (0.0%)	0	0	(0.0%)
<b>D/R Load</b> (0.0%)	0	0	(0.0%)

