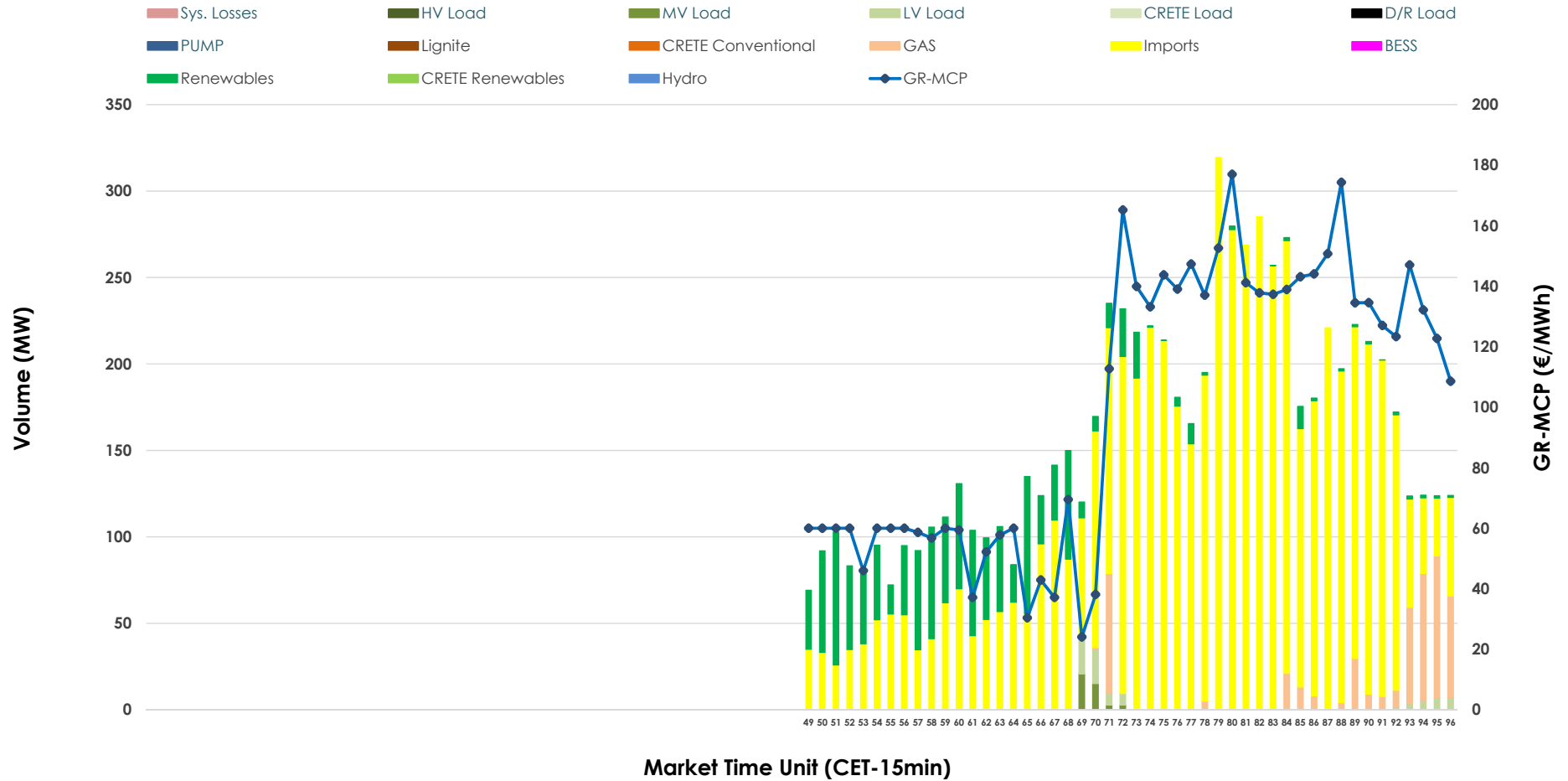


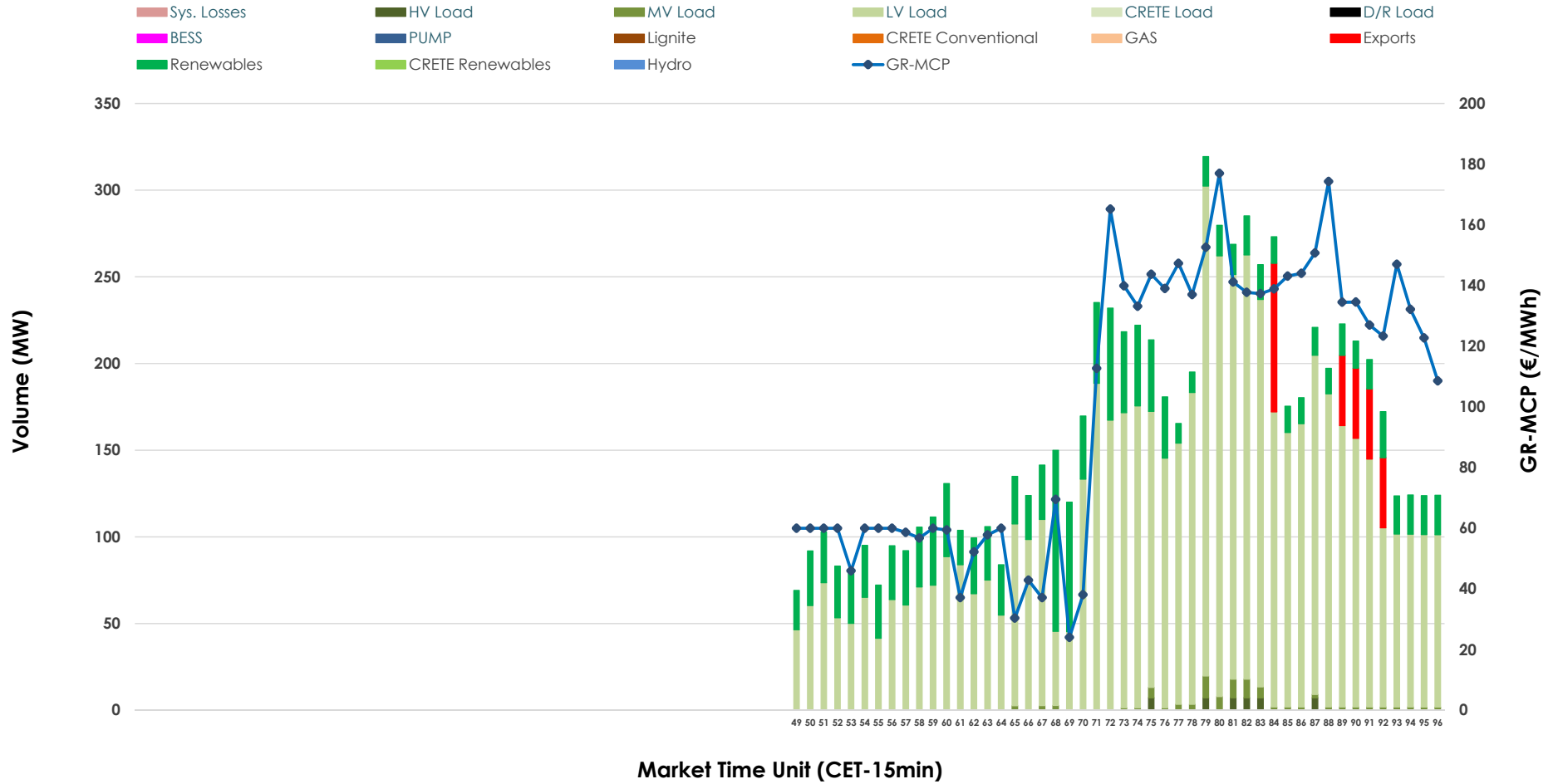


IDA '3' Market Outlook

11.04.2026 IDA '3' Market - Sell



11.04.2026 IDA '3' Market - Buy



GR Bidding Zone Weekly Figures

Delivery Day	05.04	06.04	07.04	08.04	09.04	10.04	11.04
	↓ -54%	↑ 102%	↑ 44%	↔ 21%	↔ 10%	→ 0%	↔ 20%
Avg.MCP (€/MWh)	21.49	43.45	62.41	75.60	83.16	83.51	99.89
Max.MCP (€/MWh)	97.54	191.43	184.28	186.48	186.44	184.91	176.97
Min.MCP (€/MWh)	-65.92	-123.91	-48.10	-20.01	-15.20	-9.97	24.04
	↓ -69%	↑ 115%	↘ -14%	↔ 23%	↔ 13%	↑ 54%	↔ 27%
Tot.Vol(GWh)	0.77	1.65	1.43	1.76	1.99	3.06	3.89

Trades by Order Type

Delivery Day		05.04	06.04	07.04	08.04	09.04	10.04	11.04	
Ord Price Type		Sell & Buy Trades in (GWh) per Price Type							(%)
PPT	(S)	0.000	0.000	0.000	0.000	0.000	0.000	0.000	0.00%
HBD	(S)	0.338	0.322	0.601	0.493	0.819	1.338	0.419	21.51%
BLK	(S)	0.000	0.000	0.000	0.000	0.000	0.000	0.000	0.00%
CPL	(S)	0.046	0.503	0.112	0.386	0.177	0.192	1.528	78.49%
PPT	(B)	0.000	0.000	0.000	0.000	0.000	0.000	0.000	0.00%
HBD	(B)	0.200	0.768	0.321	0.548	0.173	0.392	1.885	96.83%
BLK	(B)	0.000	0.000	0.000	0.000	0.000	0.000	0.000	0.00%
CPL	(B)	0.184	0.057	0.392	0.330	0.823	1.138	0.062	3.17%
		Sell & Buy Orders Traded per Price Type							(%)
PPT	(S)	0	0	0	0	0	0	0	0.00%
HBD	(S)	130	65	141	206	257	176	161	100.00%
BLK	(S)	0	0	0	0	0	0	0	0.00%
PPT	(B)	0	0	0	0	0	0	0	0.00%
HBD	(B)	130	197	112	154	112	131	347	100.00%
BLK	(B)	0	0	0	0	0	0	0	0.00%

- MCP** Market Clearing Price (€/MWh)
- PPT** Priority Price-Taking
- HBD** Hybrid
- BLK** Block
- CPL** Market Coupling Flow

Trade's Volume Mix

	Sell - MWh	Buy - MWh	
Lignite	0	0	(0.0%)
Crete Conv.	0	0	(0.0%)
Gas	112	0	(0.0%)
Hydro	0	0	(0.0%)
Imports	1,528		
RES	276	358	(18.4%)
Crete RES	0	0	(0.0%)
BESS	0	0	(0.0%)
HV Load	0	11	(0.6%)
MV Load	10	24	(1.3%)
LV Load	20	1,491	(76.6%)
Crete Load	0	0	(0.0%)
Pumping	0	0	(0.0%)
Exports		62	(3.2%)
Sys.Losses	0	0	(0.0%)
D/R Load	0	0	(0.0%)

