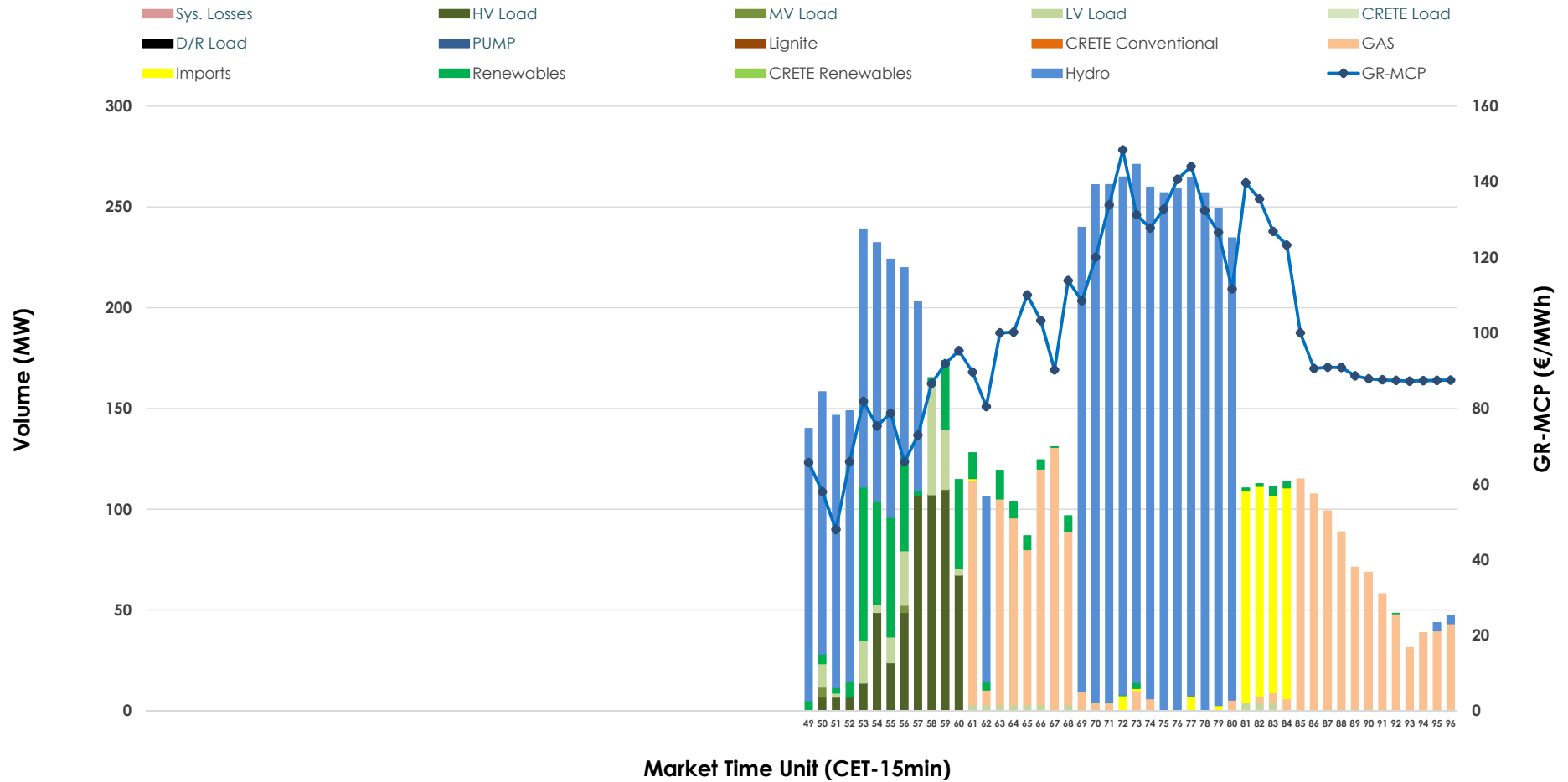


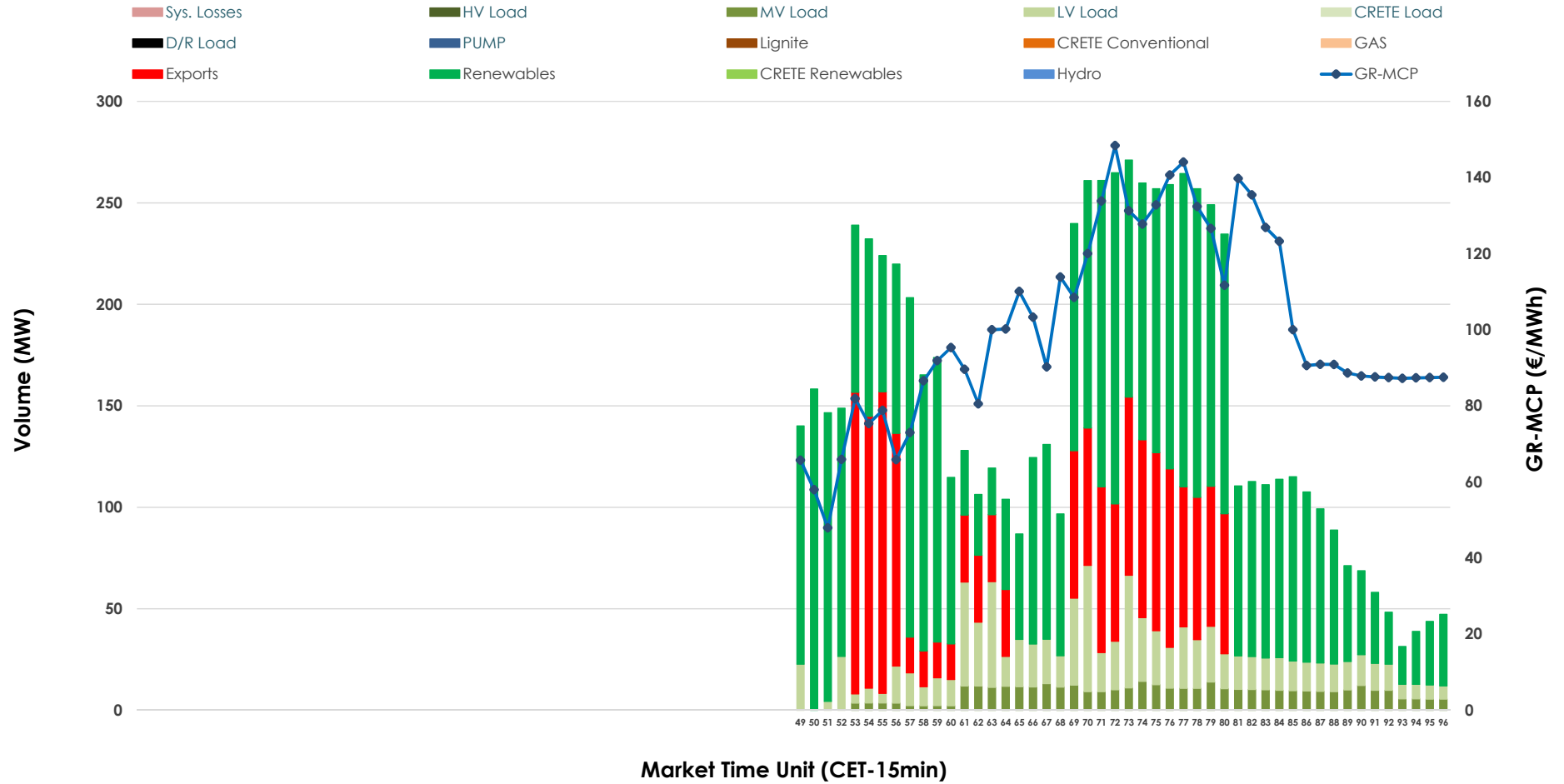


# IDA '3' Market Outlook

13.02.2026 IDA '3' Market - Sell



### 13.02.2026 IDA '3' Market - Buy



### GR Bidding Zone Weekly Figures

Delivery Day	07.02	08.02	09.02	10.02	11.02	12.02	13.02
	↗ 14%	↗ 3%	↗ 53%	↘ -14%	↘ -32%	↘ -18%	↗ 43%
<b>Avg.MCP (€/MWh)</b>	92.49	95.06	145.42	125.29	85.74	70.24	100.63
<b>Max.MCP (€/MWh)</b>	138.67	132.01	237.65	176.20	145.63	101.74	148.40
<b>Min.MCP (€/MWh)</b>	-25.81	-2.41	88.66	83.83	-35.00	-24.99	47.95
	↗ 421%	↗ 12%	↗ 259%	↘ -82%	↗ 115%	↘ -65%	↗ 276%
<b>Tot.Vol(GWh)</b>	1.84	2.07	7.41	1.31	2.82	0.99	3.70

### Trades by Order Type

Delivery Day		07.02	08.02	09.02	10.02	11.02	12.02	13.02	
<b>Ord Price Type</b>		<b>Sell &amp; Buy Trades in (GWh) per Price Type</b>							<b>(%)</b>
<b>PPT</b>	(S)	0.000	0.000	0.000	0.000	0.000	0.000	0.000	0.00%
<b>HBD</b>	(S)	0.703	0.384	2.469	0.543	1.399	0.493	1.744	94.17%
<b>BLK</b>	(S)	0.000	0.000	0.000	0.000	0.000	0.000	0.000	0.00%
<b>CPL</b>	(S)	0.219	0.649	1.238	0.114	0.013	0.000	0.108	5.83%
<b>PPT</b>	(B)	0.000	0.000	0.000	0.000	0.000	0.000	0.000	0.00%
<b>HBD</b>	(B)	0.734	0.932	3.557	0.551	0.234	0.453	1.435	77.50%
<b>BLK</b>	(B)	0.000	0.000	0.000	0.000	0.000	0.000	0.000	0.00%
<b>CPL</b>	(B)	0.188	0.101	0.149	0.106	1.178	0.040	0.417	22.50%
		<b>Sell &amp; Buy Orders Traded per Price Type</b>							<b>(%)</b>
<b>PPT</b>	(S)	0	0	0	0	0	0	0	0.00%
<b>HBD</b>	(S)	143	112	414	166	207	147	158	100.00%
<b>BLK</b>	(S)	0	0	0	0	0	0	0	0.00%
<b>PPT</b>	(B)	0	0	0	0	0	0	0	0.00%
<b>HBD</b>	(B)	160	327	140	333	108	208	366	100.00%
<b>BLK</b>	(B)	0	0	0	0	0	0	0	0.00%

- MCP** Market Clearing Price (€/MWh)
- PPT** Priority Price-Taking
- HBD** Hybrid
- BLK** Block
- CPL** Market Coupling Flow

### Trade's Volume Mix

	Sell - MWh	Buy - MWh	
<b>Lignite</b> (0.0%)	0	0	(0.0%)
<b>Crete Conv.</b> (0.0%)	0	0	(0.0%)
<b>Gas</b> (21.4%)	395	0	(0.0%)
<b>Hydro</b> (57.0%)	1,056	0	(0.0%)
<b>Imports</b> (5.8%)	108		
<b>RES</b> (5.5%)	102	1,097	(59.2%)
<b>Crete RES</b> (0.0%)	0	0	(0.0%)
<b>HV Load</b> (7.4%)	137	0	(0.0%)
<b>MV Load</b> (0.1%)	2	99	(5.3%)
<b>LV Load</b> (2.8%)	52	239	(12.9%)
<b>Crete Load</b> (0.0%)	0	0	(0.0%)
<b>Pumping</b> (0.0%)	0	0	(0.0%)
<b>Exports</b>		417	(22.5%)
<b>Sys.Losses</b> (0.0%)	0	0	(0.0%)
<b>D/R Load</b> (0.0%)	0	0	(0.0%)

