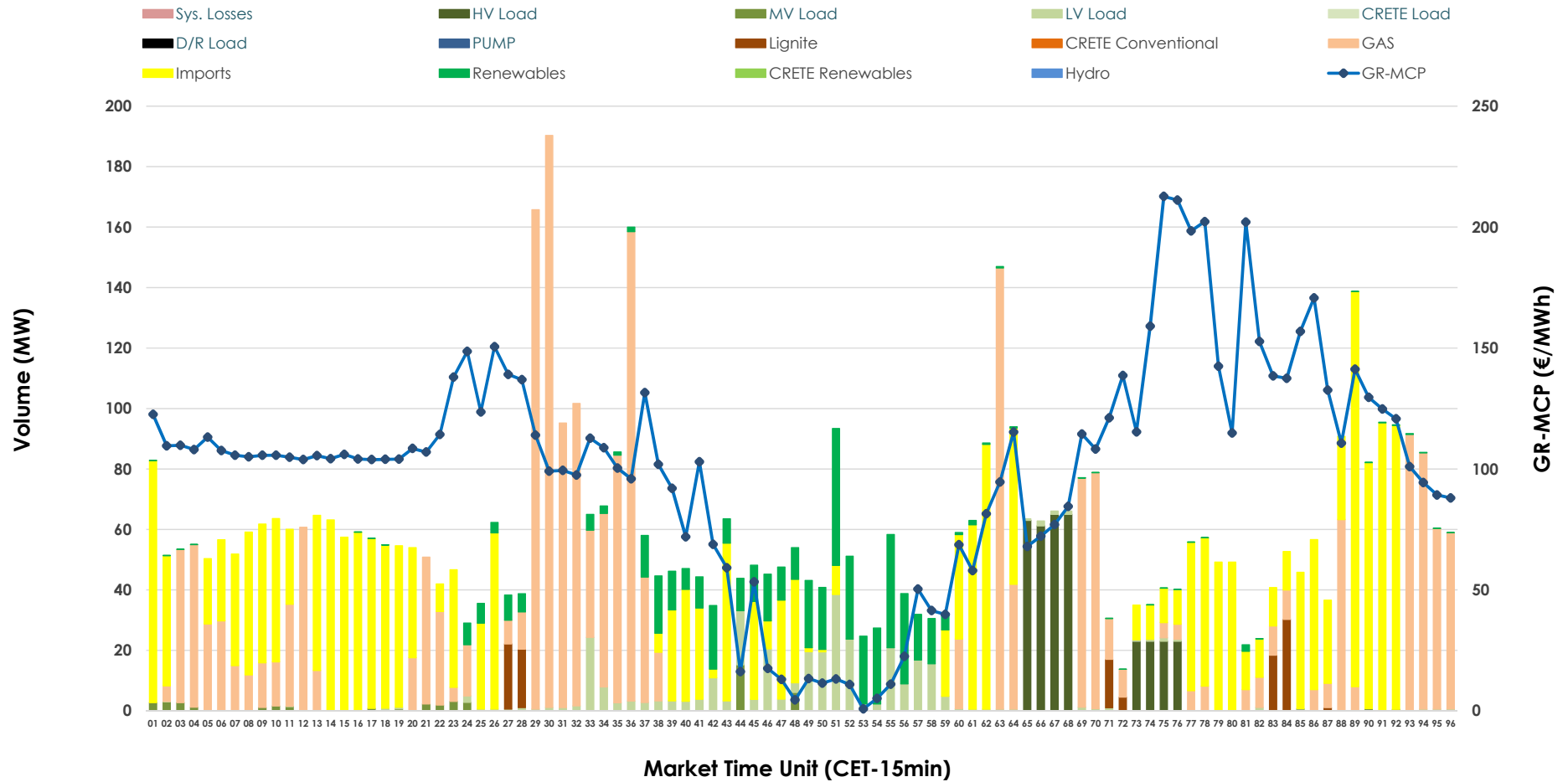


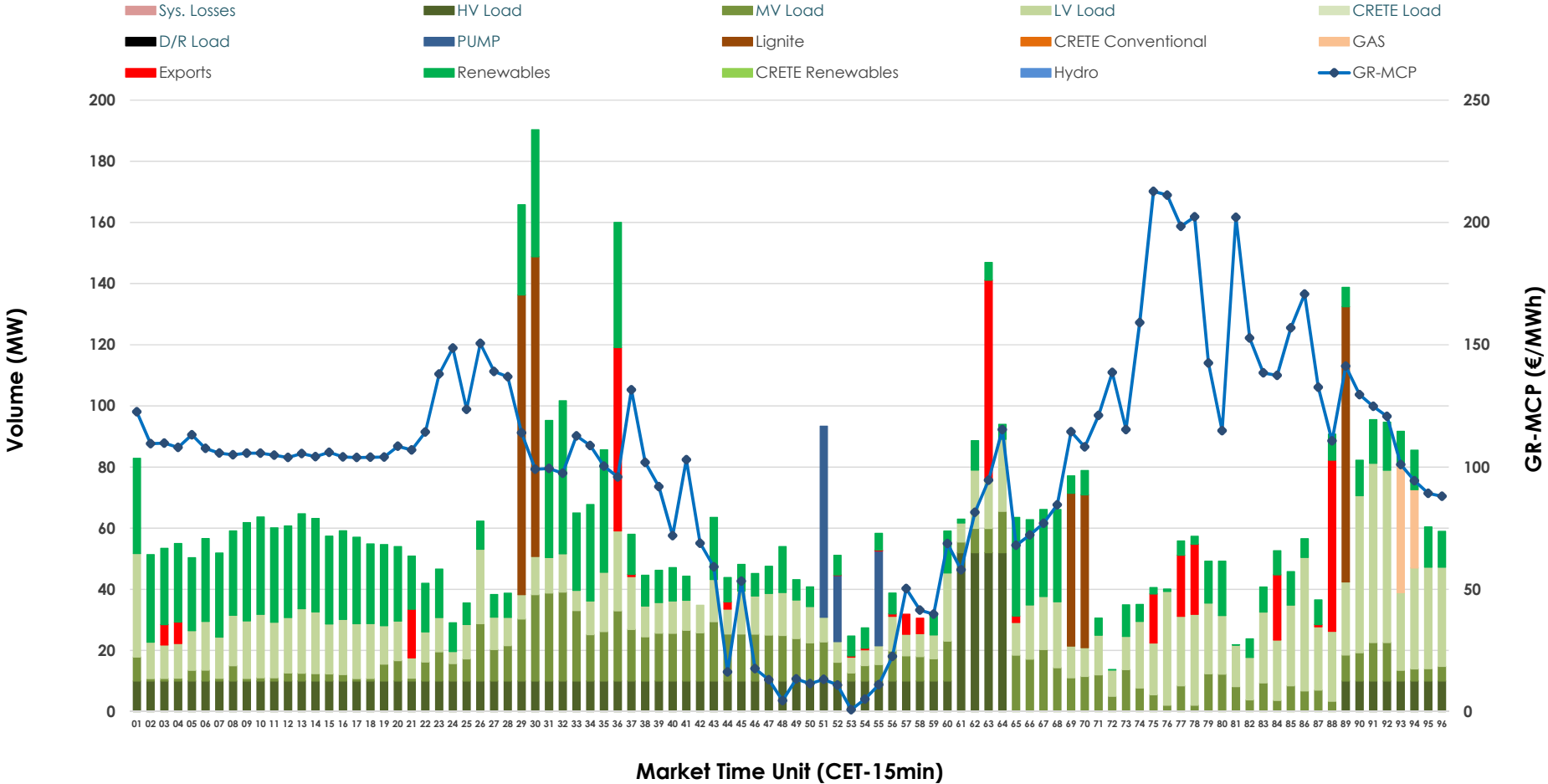


IDA '1' Market Outlook

05.03.2026 IDA '1' Market - Sell



05.03.2026 IDA '1' Market - Buy



GR Bidding Zone Weekly Figures

Delivery Day	27.02	28.02	01.03	02.03	03.03	04.03	05.03
	↗ 25%	↘ -29%	↘ -22%	↗ 108%	↗ 35%	↘ -5%	↗ 3%
Avg.MCP (€/MWh)	66.45	46.94	36.70	76.51	103.29	97.63	100.31
Max.MCP (€/MWh)	157.30	105.26	113.24	212.21	227.86	261.83	212.70
Min.MCP (€/MWh)	-3.51	-25.94	-10.14	-15.94	10.59	-3.04	0.79
	↗ 25%	↘ -32%	↘ -8%	↗ 8%	↗ 16%	↗ 267%	↘ -78%
Tot.Vol(GWh)	4.63	3.13	2.90	3.13	3.63	13.31	2.92

Trades by Order Type

Delivery Day		27.02	28.02	01.03	02.03	03.03	04.03	05.03	
Ord Price Type		Sell & Buy Trades in (GWh) per Price Type							(%)
PPT	(S)	0.000	0.000	0.000	0.000	0.000	0.000	0.000	0.00%
HBD	(S)	1.535	1.457	1.371	1.093	1.462	6.633	0.881	60.31%
BLK	(S)	0.000	0.000	0.000	0.000	0.000	0.000	0.000	0.00%
CPL	(S)	0.778	0.111	0.078	0.474	0.351	0.023	0.580	39.69%
PPT	(B)	0.000	0.000	0.000	0.000	0.000	0.000	0.000	0.00%
HBD	(B)	1.702	1.009	1.031	1.121	1.333	6.102	1.383	94.68%
BLK	(B)	0.000	0.000	0.000	0.000	0.000	0.000	0.000	0.00%
CPL	(B)	0.612	0.559	0.418	0.446	0.480	0.555	0.078	5.32%
		Sell & Buy Orders Traded per Price Type							(%)
PPT	(S)	0	0	0	0	0	0	0	0.00%
HBD	(S)	437	207	151	151	335	330	239	100.00%
BLK	(S)	0	0	0	0	0	0	0	0.00%
PPT	(B)	0	0	0	0	0	0	0	0.00%
HBD	(B)	665	798	645	794	806	854	929	100.00%
BLK	(B)	0	0	0	0	0	0	0	0.00%

- MCP** Market Clearing Price (€/MWh)
- PPT** Priority Price-Taking
- HBD** Hybrid
- BLK** Block
- CPL** Market Coupling Flow

Trade's Volume Mix

		Sell - MWh		Buy - MWh	
Lignite	(1.9%)	28	96		(6.6%)
Crete Conv.	(0.0%)	0	0		(0.0%)
Gas	(38.3%)	559	17		(1.2%)
Hydro	(0.0%)	0	0		(0.0%)
Imports	(39.7%)	580			
RES	(8.0%)	116	378		(25.9%)
Crete RES	(0.0%)	0	0		(0.0%)
HV Load	(5.9%)	87	222		(15.2%)
MV Load	(0.8%)	12	230		(15.7%)
LV Load	(5.4%)	79	411		(28.1%)
Crete Load	(0.0%)	0	0		(0.0%)
Pumping	(0.0%)	0	29		(2.0%)
Exports			78		(5.3%)
Sys.Losses	(0.0%)	0	0		(0.0%)
D/R Load	(0.0%)	0	0		(0.0%)

