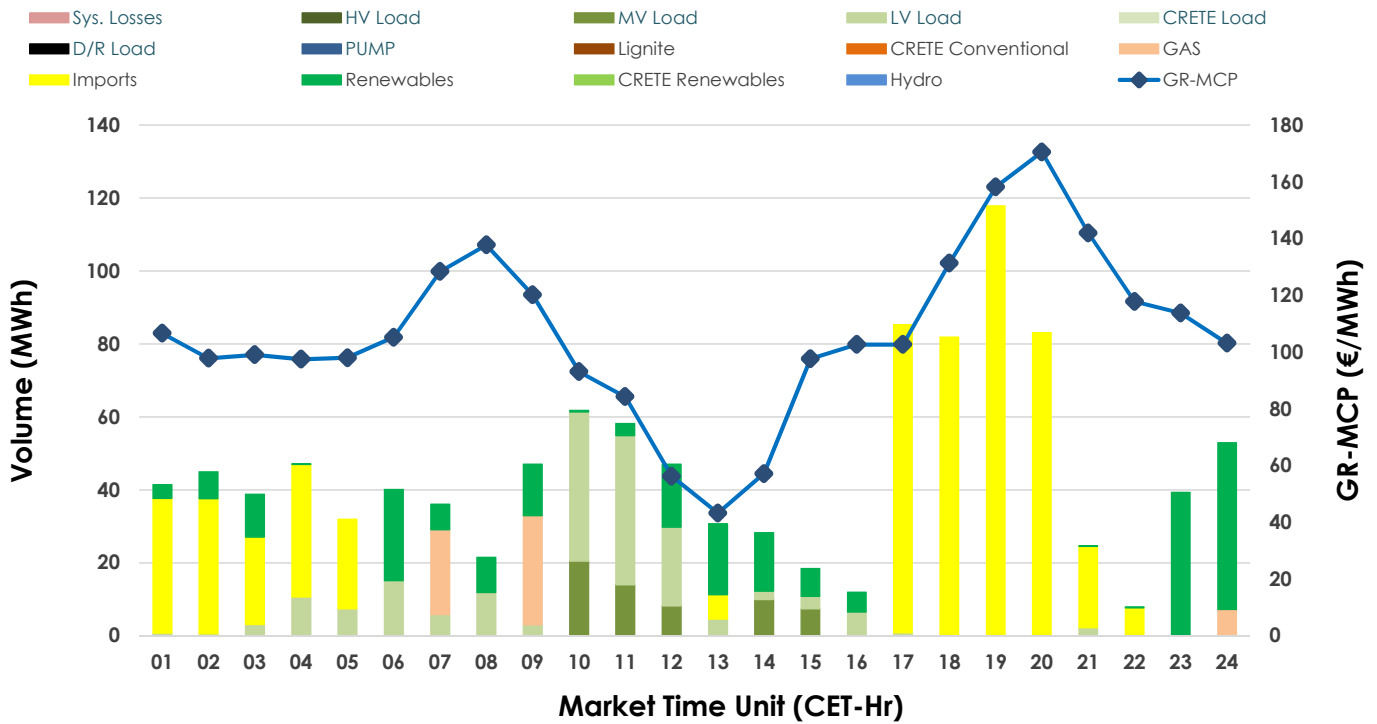
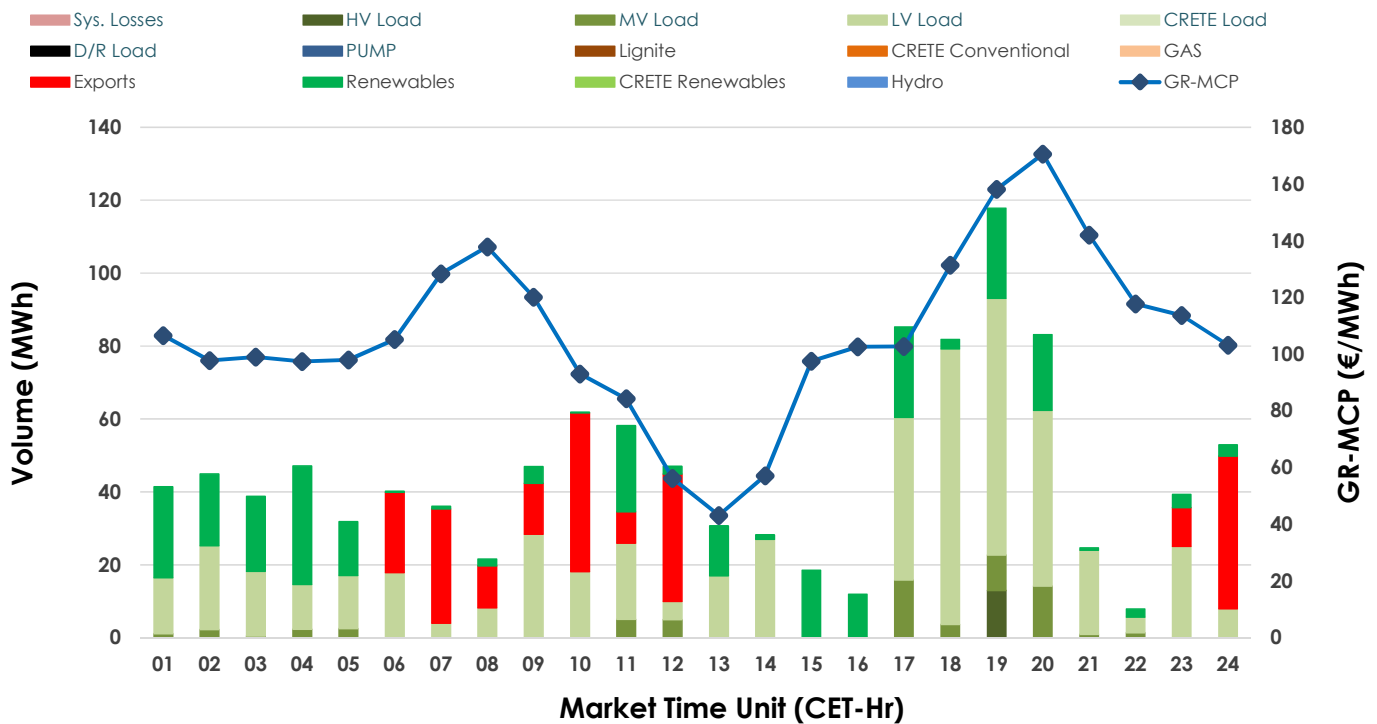


27.03.2025 IDA '2' Market - Sell



27.03.2025 IDA '2' Market - Buy



GR Bidding Zone Weekly Figures

Delivery Day	21.03	22.03	23.03	24.03	25.03	26.03	27.03
	📉-7%	📉-15%	📉-20%	📈66%	➡️1%	📉-1%	📉-11%
Avg.MCP (€/MWh)	106.95	90.77	72.30	120.11	120.93	119.39	106.84
Max.MCP (€/MWh)	229.98	135.43	145.03	142.94	184.80	176.08	170.53
Min.MCP (€/MWh)	4.95	21.91	14.00	101.30	95.68	93.03	43.23
	📈42%	📉-36%	↔️8%	↔️14%	📉-10%	📉-3%	📉-21%
Tot.Vol(GWh)	3.99	2.56	2.78	3.17	2.86	2.78	2.20

Trades by Order Type

Delivery Day	21.03	22.03	23.03	24.03	25.03	26.03	27.03
Order P.T	Sell & Buy Trades in (GWh) per Price Type						
PPT (S)							
HBD (S)	0.894	0.940	0.902	1.403	0.892	0.614	0.535
BLK (S)							
CPL (S)	1.101	0.342	0.488	0.184	0.537	0.776	0.563
PPT (B)							
HBD (B)	1.564	0.800	1.300	0.785	0.728	1.223	0.879
BLK (B)							
CPL (B)	0.432	0.483	0.090	0.801	0.702	0.167	0.219
Order P.T	Sell & Buy Orders Traded per Price Type						
PPT (S)							
HBD (S)	81	149	109	132	88	67	69
BLK (S)							
PPT (B)							
HBD (B)	172	84	122	140	150	192	167
BLK (B)							

MCP Market Clearing Price (€/MWh)
PPT Priority Price-Taking
HBD Hybrid
BLK Block
CPL Market Coupling Flow

Trade's Volume Mix

	Sell - MWh		Buy - MWh	
Lignite	(0.0%)	0	0	(0.0%)
Crete Conv.	(0.0%)	0	0	(0.0%)
Gas	(5.5%)	61	0	(0.0%)
Hydro	(0.0%)	0	0	(0.0%)
Imports	(51.3%)	563		
RES	(21.2%)	232	273	(24.9%)
Crete RES	(0.0%)	0	0	(0.0%)
HV Load	(0.0%)	0	13	(1.2%)
MV Load	(5.5%)	60	65	(5.9%)
LV Load	(16.5%)	182	529	(48.2%)
Crete Load	(0.0%)	0	0	(0.0%)
Pumping	(0.0%)	0	0	(0.0%)
Exports			219	(19.9%)
Sys.Losses	(0.0%)	0	0	(0.0%)
D/R Load	(0.0%)	0	0	(0.0%)

