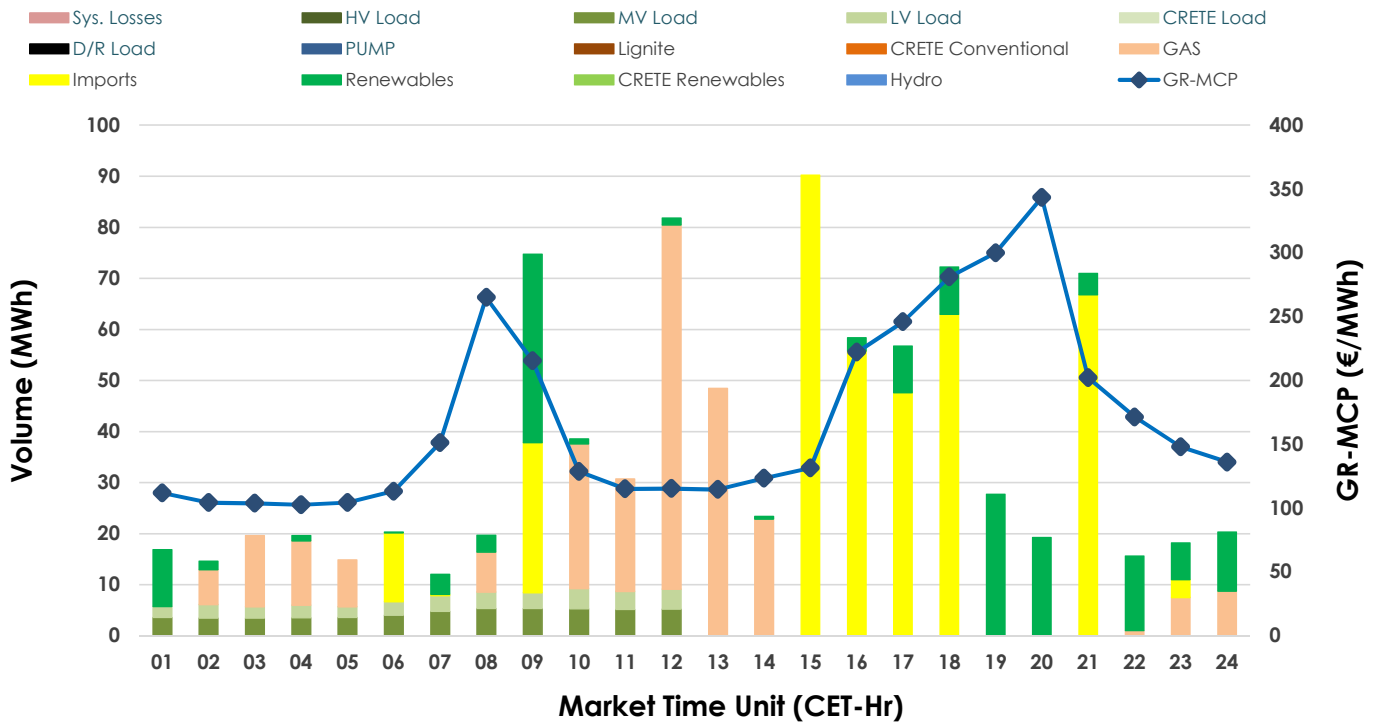
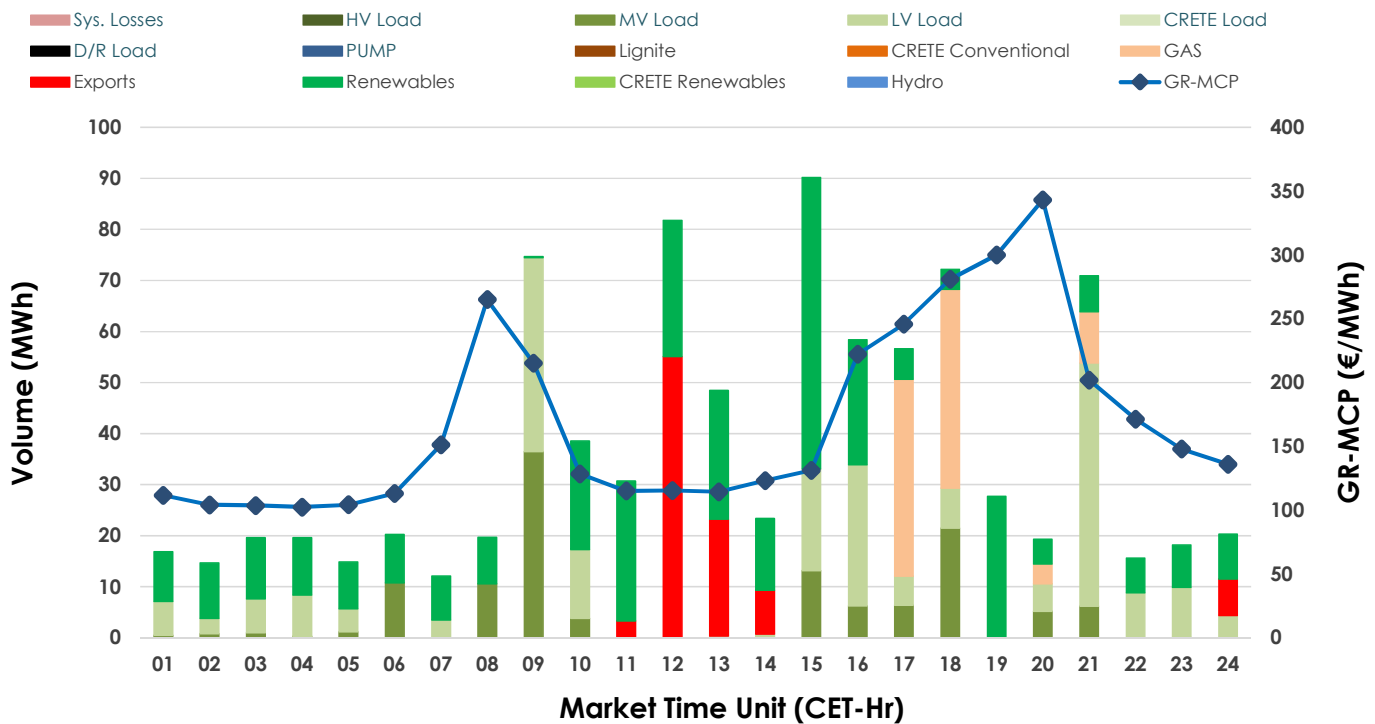


11.12.2024 IDA '2' Market - Sell



11.12.2024 IDA '2' Market - Buy



GR Bidding Zone Weekly Figures

Delivery Day	05.12	06.12	07.12	08.12	09.12	10.12	11.12
	📉-9%	📉-12%	📉-14%	📉-17%	📈11%	📈18%	📈25%
Avg.MCP (€/MWh)	162.85	143.89	124.27	102.62	114.26	134.76	168.76
Max.MCP (€/MWh)	279.18	185.66	158.12	122.76	171.16	196.23	343.19
Min.MCP (€/MWh)	103.00	97.71	75.95	87.21	32.85	83.20	102.55
	📉-37%	📈123%	📉-8%	📉-57%	📈78%	📈90%	📉-57%
Tot.Vol(GWh)	1.38	3.07	2.84	1.22	2.17	4.12	1.77

Trades by Order Type

Delivery Day	05.12	06.12	07.12	08.12	09.12	10.12	11.12
Order P.T	Sell & Buy Trades in (GWh) per Price Type						
PPT (S)							
HBD (S)	0.436	1.016	1.322	0.611	1.050	1.934	0.514
BLK (S)							
CPL (S)	0.254	0.521	0.100		0.034	0.125	0.370
PPT (B)							
HBD (B)	0.684	1.323	0.590	0.611	0.842	0.799	0.787
BLK (B)							
CPL (B)	0.006	0.214	0.832		0.242	1.261	0.097
Order P.T	Sell & Buy Orders Traded per Price Type						
PPT (S)							
HBD (S)	59	97	67	85	131	190	91
BLK (S)							
PPT (B)							
HBD (B)	161	177	152	120	129	129	155
BLK (B)							

MCP	Market Clearing Price (€/MWh)
PPT	Priority Price-Taking
HBD	Hybrid
BLK	Block
CPL	Market Coupling Flow

Trade's Volume Mix

	Sell - MWh	Buy - MWh	
Lignite	(0.0%) 0	0	(0.0%)
Crete Conv.	(0.0%) 0	0	(0.0%)
Gas	(29.5%) 261	91	(10.3%)
Hydro	(0.0%) 0	0	(0.0%)
Imports	(41.8%) 370		
RES	(18.7%) 166	350	(39.6%)
Crete RES	(0.0%) 0	0	(0.0%)
HV Load	(0.0%) 0	0	(0.0%)
MV Load	(5.9%) 53	124	(14.0%)
LV Load	(4.0%) 36	222	(25.1%)
Crete Load	(0.0%) 0	0	(0.0%)
Pumping	(0.0%) 0	0	(0.0%)
Exports		97	(11.0%)
Sys.Losses	(0.0%) 0	0	(0.0%)
D/R Load	(0.0%) 0	0	(0.0%)

