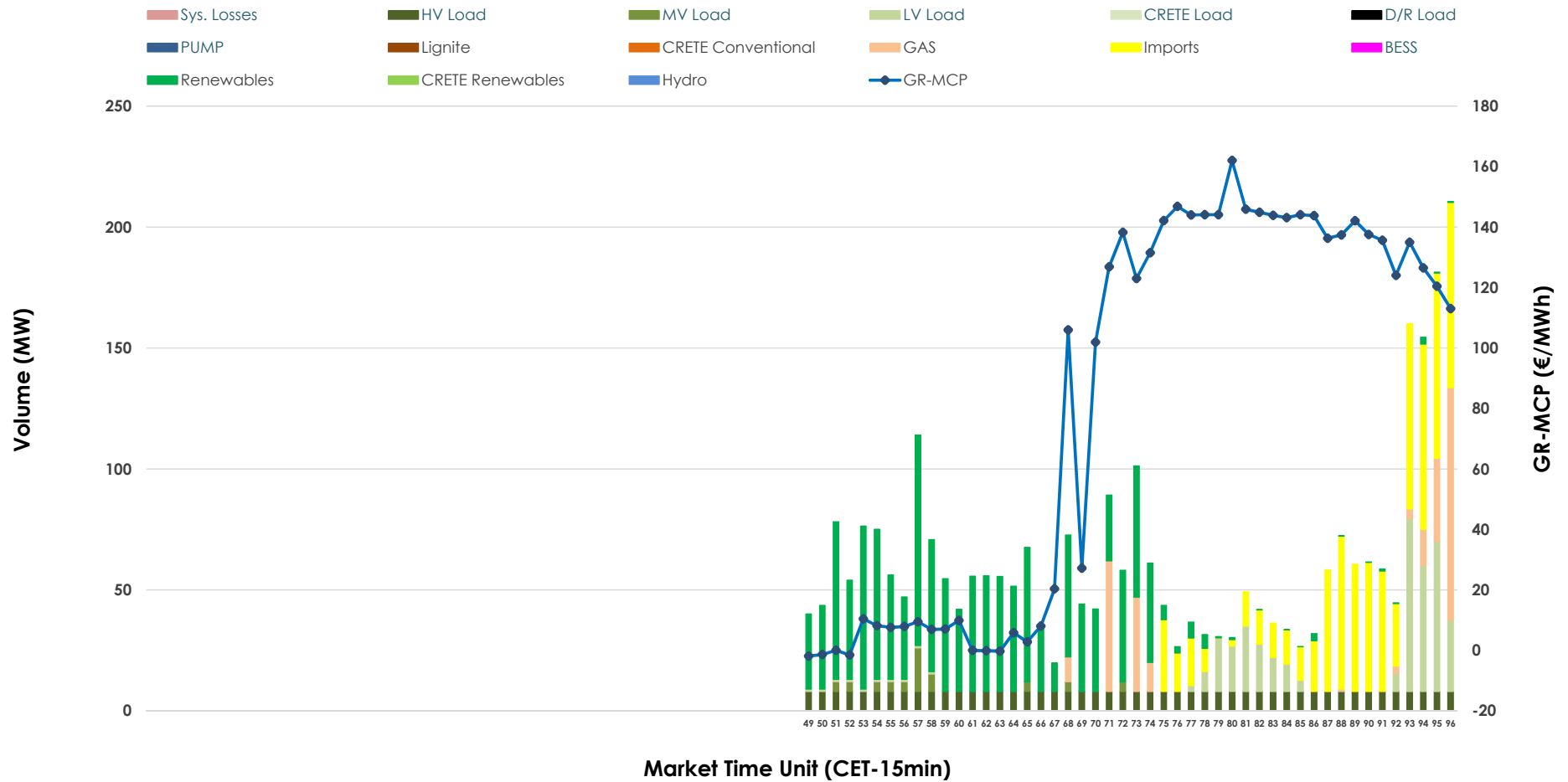


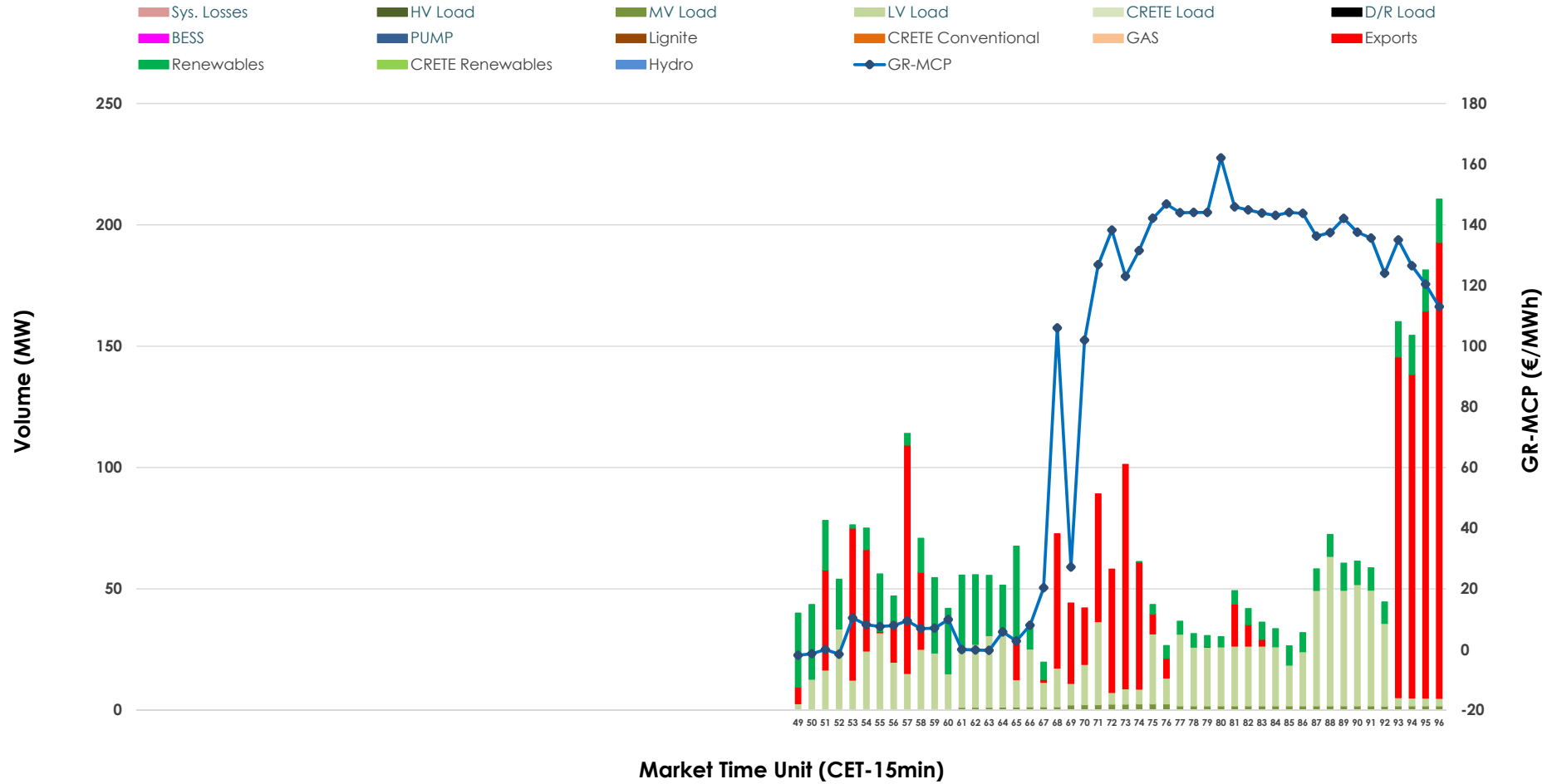


IDA '3' Market Outlook

12.04.2026 IDA '3' Market - Sell



12.04.2026 IDA '3' Market - Buy



GR Bidding Zone Weekly Figures

Delivery Day	06.04	07.04	08.04	09.04	10.04	11.04	12.04
	↑ 102%	↑ 44%	↔ 21%	↔ 10%	→ 0%	↔ 20%	↓ -18%
Avg.MCP (€/MWh)	43.45	62.41	75.60	83.16	83.51	99.89	81.48
Max.MCP (€/MWh)	191.43	184.28	186.48	186.44	184.91	176.97	162.05
Min.MCP (€/MWh)	-123.91	-48.10	-20.01	-15.20	-9.97	24.04	-1.89
	↑ 115%	↓ -14%	↔ 23%	↔ 13%	↑ 54%	↔ 27%	↓ -61%
Tot.Vol(GWh)	1.65	1.43	1.76	1.99	3.06	3.89	1.52

Trades by Order Type

Delivery Day		06.04	07.04	08.04	09.04	10.04	11.04	12.04	
Ord Price Type		Sell & Buy Trades in (GWh) per Price Type							(%)
PPT	(S)	0.000	0.000	0.000	0.000	0.000	0.000	0.000	0.00%
HBD	(S)	0.322	0.601	0.493	0.819	1.338	0.419	0.568	74.66%
BLK	(S)	0.000	0.000	0.000	0.000	0.000	0.000	0.000	0.00%
CPL	(S)	0.503	0.112	0.386	0.177	0.192	1.528	0.193	25.34%
PPT	(B)	0.000	0.000	0.000	0.000	0.000	0.000	0.000	0.00%
HBD	(B)	0.768	0.321	0.548	0.173	0.392	1.885	0.426	56.01%
BLK	(B)	0.000	0.000	0.000	0.000	0.000	0.000	0.000	0.00%
CPL	(B)	0.057	0.392	0.330	0.823	1.138	0.062	0.335	43.99%
		Sell & Buy Orders Traded per Price Type							(%)
PPT	(S)	0	0	0	0	0	0	0	0.00%
HBD	(S)	65	141	206	257	176	161	209	100.00%
BLK	(S)	0	0	0	0	0	0	0	0.00%
PPT	(B)	0	0	0	0	0	0	0	0.00%
HBD	(B)	197	112	154	112	131	347	172	100.00%
BLK	(B)	0	0	0	0	0	0	0	0.00%

- MCP** Market Clearing Price (€/MWh)
- PPT** Priority Price-Taking
- HBD** Hybrid
- BLK** Block
- CPL** Market Coupling Flow

Trade's Volume Mix

	Sell - MWh	Buy - MWh	
Lignite (0.0%)	0	0	(0.0%)
Crete Conv. (0.0%)	0	0	(0.0%)
Gas (8.8%)	67	0	(0.0%)
Hydro (0.0%)	0	0	(0.0%)
Imports (25.3%)	193		
RES (39.5%)	300	144	(18.9%)
Crete RES (0.0%)	0	0	(0.0%)
BESS (0.0%)	0	0	(0.0%)
HV Load (12.6%)	96	0	(0.0%)
MV Load (1.9%)	14	16	(2.2%)
LV Load (11.8%)	90	266	(34.9%)
Crete Load (0.0%)	0	0	(0.0%)
Pumping (0.0%)	0	0	(0.0%)
Exports		335	(44.0%)
Sys.Losses (0.0%)	0	0	(0.0%)
D/R Load (0.0%)	0	0	(0.0%)

