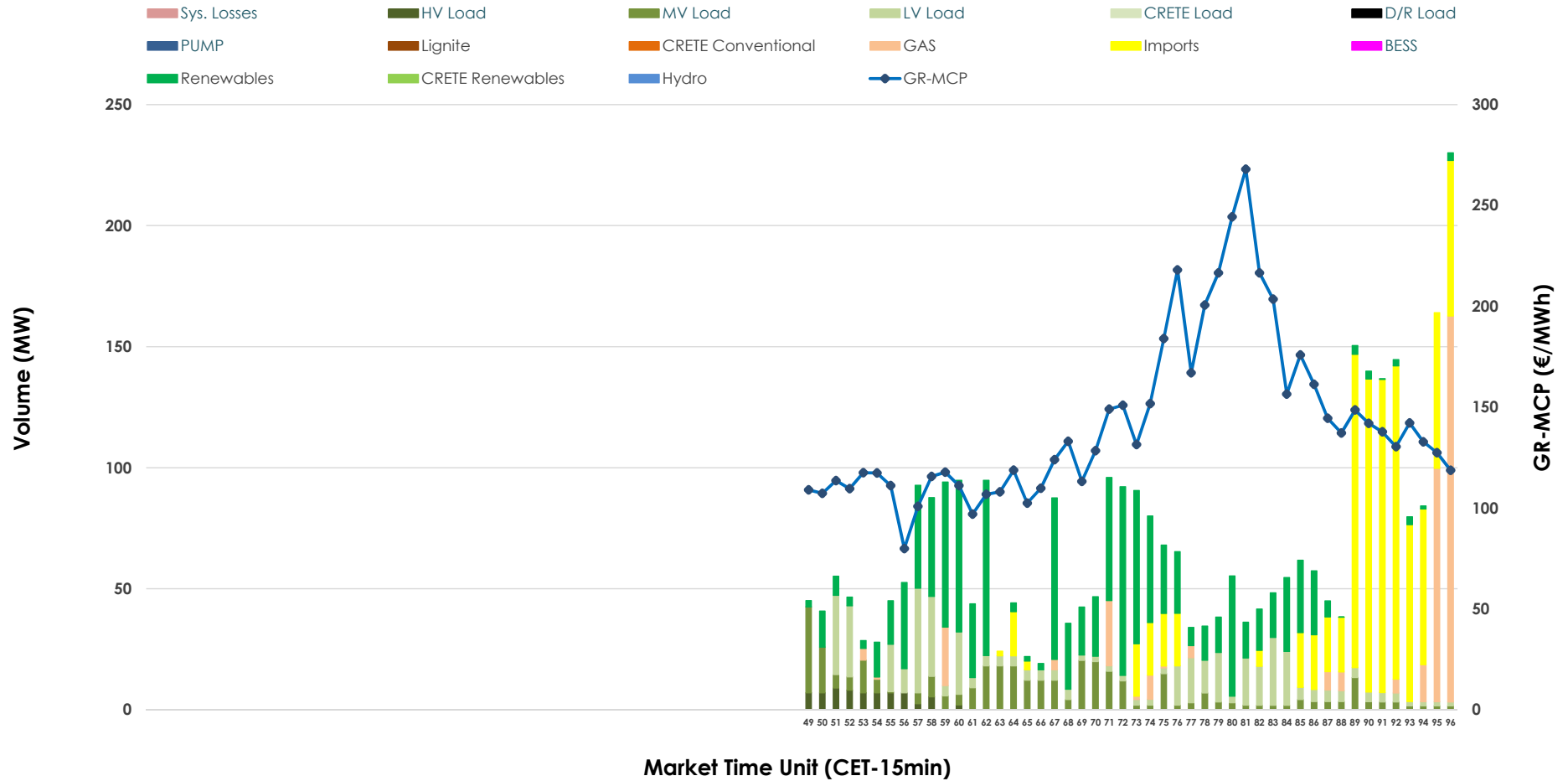


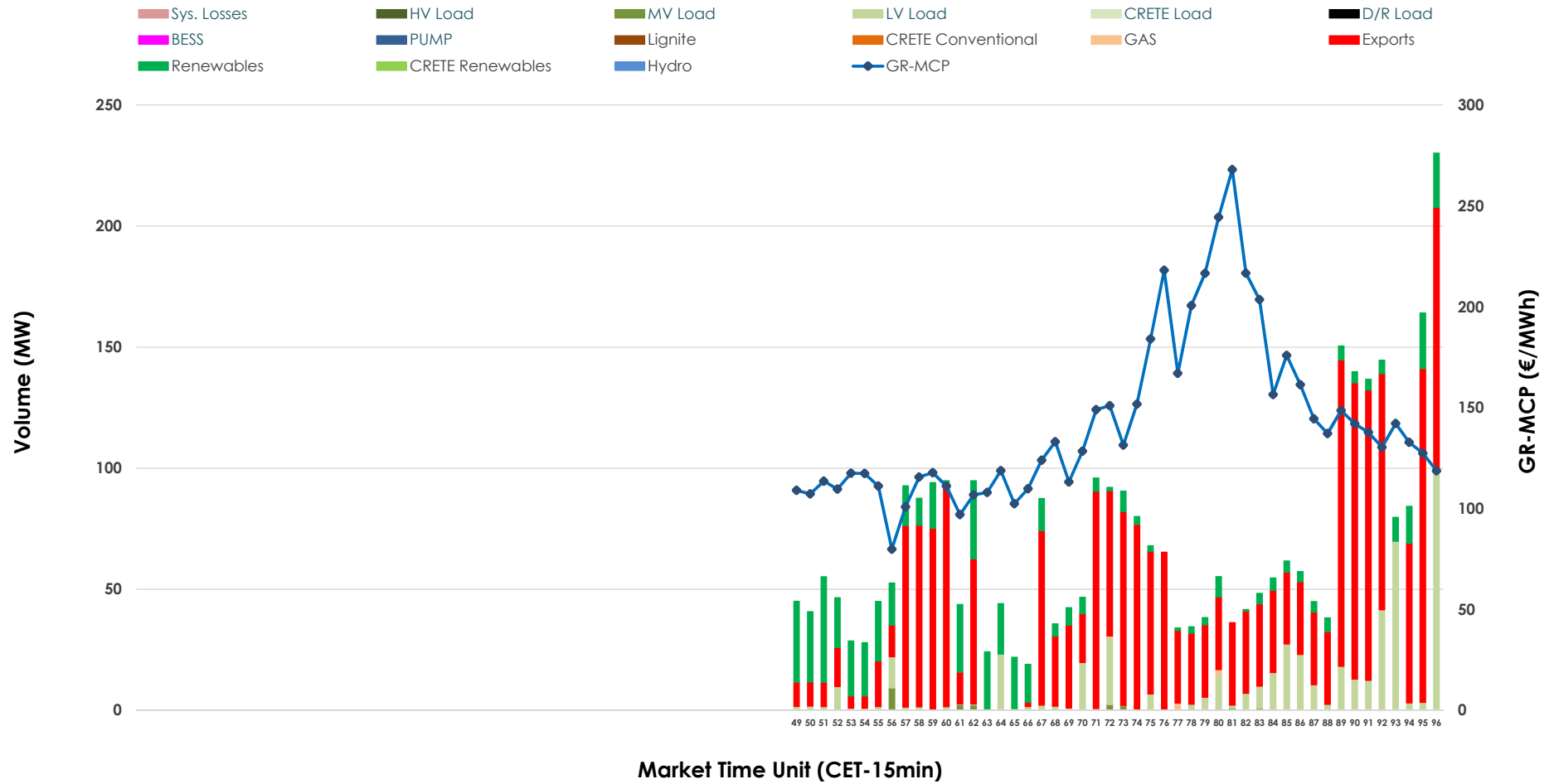


IDA '3' Market Outlook

14.04.2026 IDA '3' Market - Sell



14.04.2026 IDA '3' Market - Buy



GR Bidding Zone Weekly Figures

Delivery Day	08.04	09.04	10.04	11.04	12.04	13.04	14.04
	↗ 21%	↗ 10%	→ 0%	↗ 20%	↘ -18%	↗ 24%	↗ 40%
Avg.MCP (€/MWh)	75.60	83.16	83.51	99.89	81.48	101.24	141.87
Max.MCP (€/MWh)	186.48	186.44	184.91	176.97	162.05	170.39	267.95
Min.MCP (€/MWh)	-20.01	-15.20	-9.97	24.04	-1.89	4.68	79.90
	↗ 23%	↗ 13%	↗ 54%	↗ 27%	↘ -61%	↗ 7%	↗ 3%
Tot.Vol(GWh)	1.76	1.99	3.06	3.89	1.52	1.63	1.67

Trades by Order Type

Delivery Day		08.04	09.04	10.04	11.04	12.04	13.04	14.04	
Ord Price Type		Sell & Buy Trades in (GWh) per Price Type							(%)
PPT	(S)	0.000	0.000	0.000	0.000	0.000	0.000	0.000	0.00%
HBD	(S)	0.493	0.819	1.338	0.419	0.568	0.675	0.587	70.30%
BLK	(S)	0.000	0.000	0.000	0.000	0.000	0.000	0.000	0.00%
CPL	(S)	0.386	0.177	0.192	1.528	0.193	0.139	0.248	29.70%
PPT	(B)	0.000	0.000	0.000	0.000	0.000	0.000	0.000	0.00%
HBD	(B)	0.548	0.173	0.392	1.885	0.426	0.551	0.280	33.58%
BLK	(B)	0.000	0.000	0.000	0.000	0.000	0.000	0.000	0.00%
CPL	(B)	0.330	0.823	1.138	0.062	0.335	0.263	0.554	66.42%
		Sell & Buy Orders Traded per Price Type							(%)
PPT	(S)	0	0	0	0	0	0	0	0.00%
HBD	(S)	206	257	176	161	209	116	265	100.00%
BLK	(S)	0	0	0	0	0	0	0	0.00%
PPT	(B)	0	0	0	0	0	0	0	0.00%
HBD	(B)	154	112	131	347	172	186	134	100.00%
BLK	(B)	0	0	0	0	0	0	0	0.00%

- MCP** Market Clearing Price (€/MWh)
- PPT** Priority Price-Taking
- HBD** Hybrid
- BLK** Block
- CPL** Market Coupling Flow

Trade's Volume Mix

		Sell - MWh	Buy - MWh	
Lignite	(0.0%)	0	0	(0.0%)
Crete Conv.	(0.0%)	0	0	(0.0%)
Gas	(11.1%)	93	1	(0.2%)
Hydro	(0.0%)	0	0	(0.0%)
Imports	(29.7%)	248		
RES	(32.7%)	273	148	(17.7%)
Crete RES	(0.0%)	0	0	(0.0%)
BESS	(0.0%)	0	0	(0.0%)
HV Load	(2.1%)	17	0	(0.0%)
MV Load	(11.0%)	92	5	(0.6%)
LV Load	(13.4%)	112	126	(15.1%)
Crete Load	(0.0%)	0	0	(0.0%)
Pumping	(0.0%)	0	0	(0.0%)
Exports			554	(66.4%)
Sys.Losses	(0.0%)	0	0	(0.0%)
D/R Load	(0.0%)	0	0	(0.0%)

