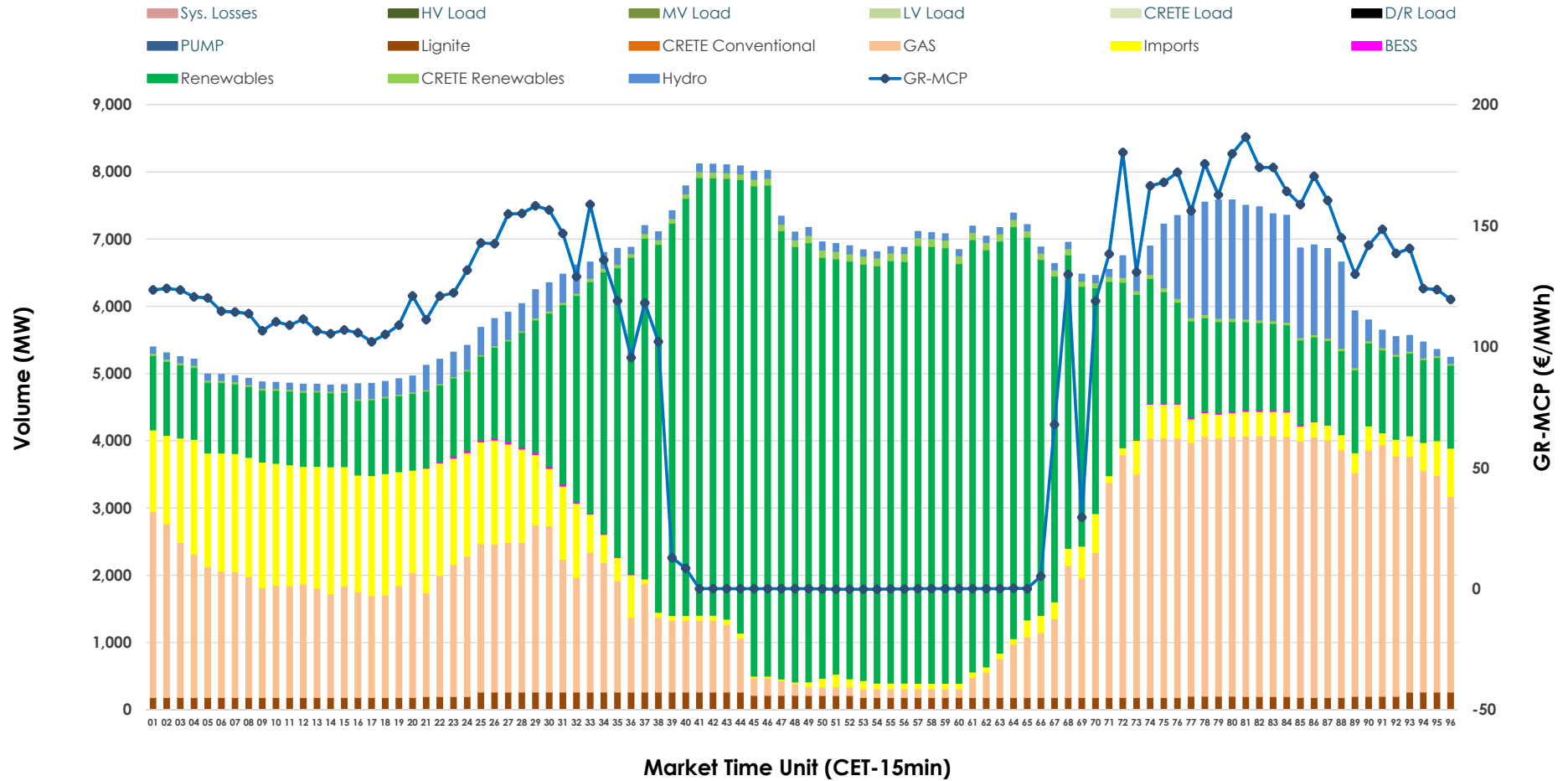


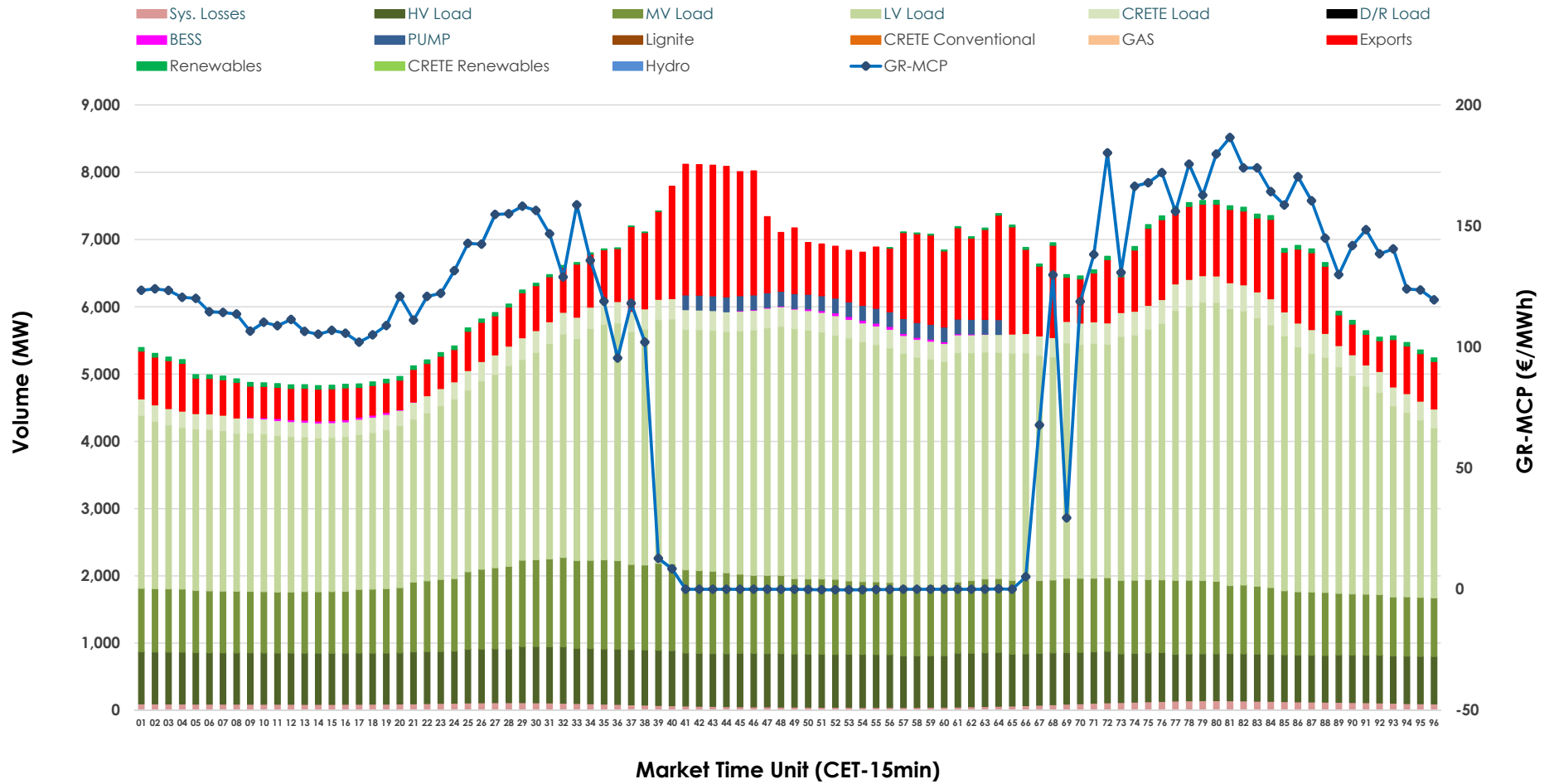


Day-Ahead Market Outlook

09.04.2026 Day-Ahead Market - Sell



09.04.2026 Day-Ahead Market - Buy



GR Bidding Zone Weekly Figures

Delivery Day	03.04	04.04	05.04	06.04	07.04	08.04	09.04
	👇 -5%	👇 -46%	👇 -56%	👆 126%	👇 21%	👇 -6%	👆 17%
Avg.MCP (€/MWh)	129.62	70.29	31.16	70.35	85.32	80.41	94.31
Max.MCP (€/MWh)	215.54	187.56	141.02	185.89	204.50	188.91	186.55
Min.MCP (€/MWh)	22.09	0.00	-50.00	-25.02	-5.30	-10.00	-0.20
	👇 -12%	👇 -8%	👇 -8%	👆 9%	👆 8%	👇 -3%	➡ 0%
Tot.Vol(GWh)	318.52	292.69	269.89	294.16	316.70	308.22	307.58

Trades by Order Type

Delivery Day		03.04	04.04	05.04	06.04	07.04	08.04	09.04	
Ord Price Type		Sell & Buy Trades in (GWh) per Price Type							(%)
PPT	(S)	50.740	54.159	67.826	55.691	50.282	57.974	46.078	29.96%
HBD	(S)	61.037	61.632	50.179	52.265	65.823	65.356	66.565	43.28%
BLK	(S)	36.198	15.314	9.239	12.305	26.897	23.861	29.612	19.25%
CPL	(S)	11.285	15.240	7.703	26.818	15.351	6.920	11.536	7.50%
PPT	(B)	13.665	13.285	12.273	13.969	14.822	14.696	14.403	9.37%
HBD	(B)	140.527	128.816	118.500	131.370	133.078	129.253	128.131	83.32%
BLK	(B)	0.000	0.000	0.000	0.000	0.000	0.000	0.000	0.00%
CPL	(B)	5.069	4.244	4.173	1.739	10.452	10.162	11.257	7.32%
		Sell & Buy Orders Traded per Price Type							(%)
PPT	(S)	1522	1606	1579	1525	1462	1471	1484	32.94%
HBD	(S)	3159	2729	1986	2384	2864	2687	3007	66.75%
BLK	(S)	16	6	8	9	12	10	14	0.31%
PPT	(B)	2238	2222	2234	2307	2350	2364	2345	36.88%
HBD	(B)	4001	4119	4339	3974	4032	4113	4014	63.12%
BLK	(B)	0	0	0	0	0	0	0	0.00%

MCP Market Clearing Price (€/MWh)
PPT Priority Price-Taking
HBD Hybrid
BLK Block
CPL Market Coupling Flow

Trade's Volume Mix

		Sell - MWh	Buy - MWh	
Lignite	(3.2%)	4,997	0	(0.0%)
Crete Conv.	(0.0%)	0	0	(0.0%)
Gas	(30.2%)	46,432	0	(0.0%)
Hydro	(5.8%)	8,926	0	(0.0%)
Imports	(10.7%)	16,527		
RES	(49.0%)	75,344	847	(0.6%)
Crete RES	(0.9%)	1,405	0	(0.0%)
BESS	(0.1%)	160	193	(0.1%)
HV Load	(0.0%)	0	18,353	(11.9%)
MV Load	(0.0%)	0	25,625	(16.7%)
LV Load	(0.0%)	0	76,713	(49.9%)
Crete Load	(0.0%)	0	7,013	(4.6%)
Pumping	(0.0%)	0	1,320	(0.9%)
Exports			21,510	(14.0%)
Sys.Losses	(0.0%)	0	2,217	(1.4%)
D/R Load	(0.0%)	0	0	(0.0%)

