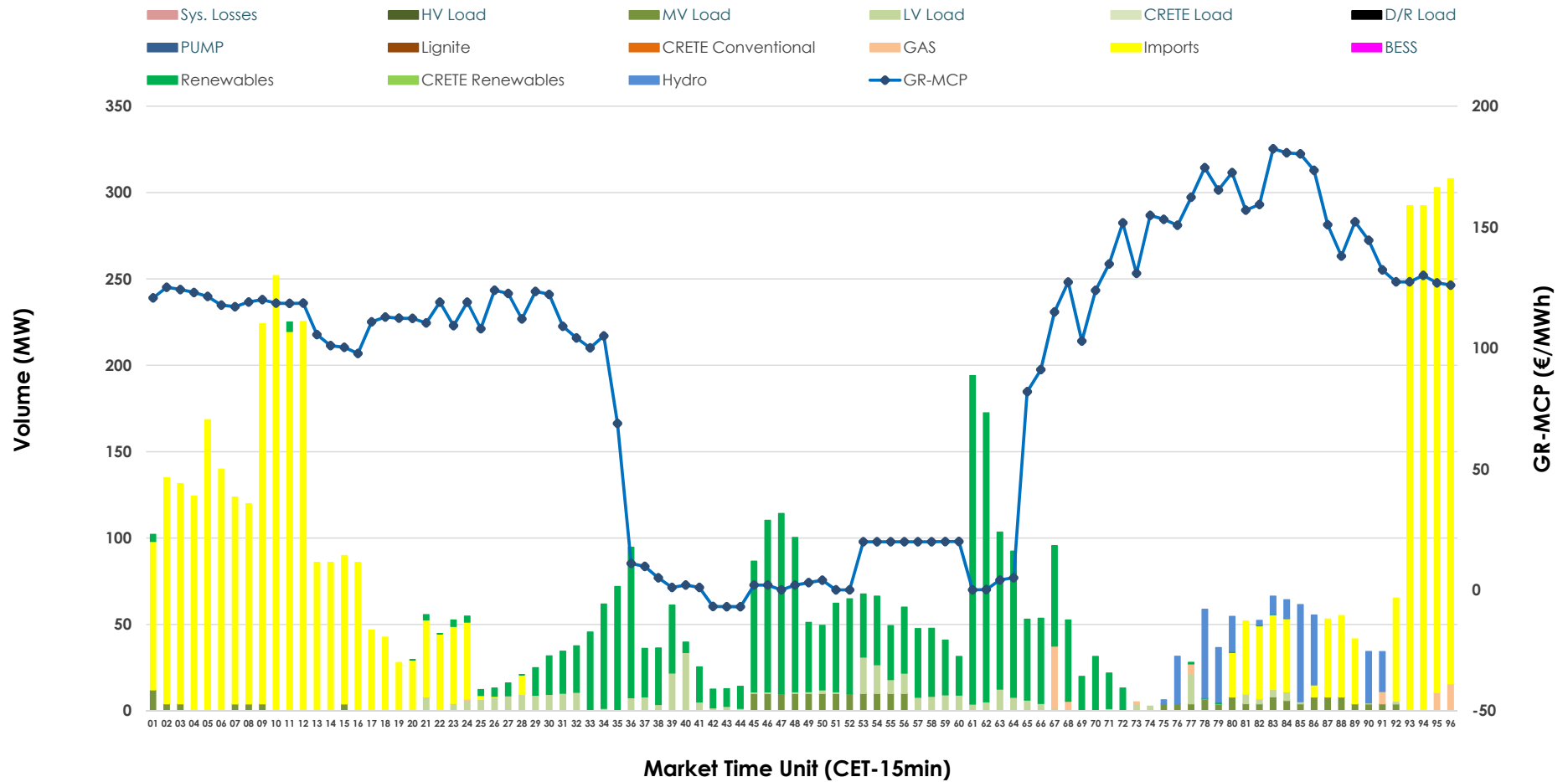


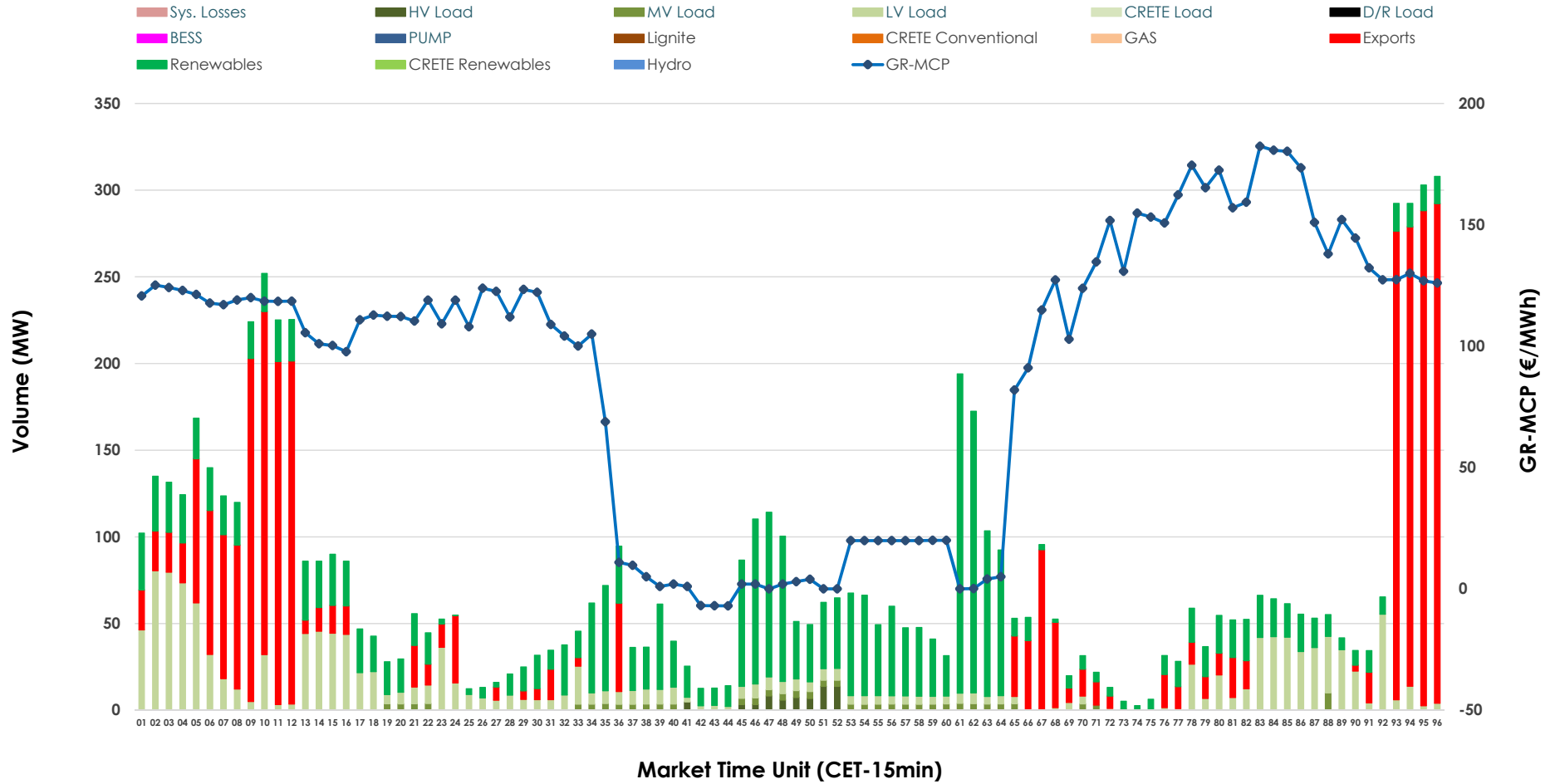


IDA '2' Market Outlook

10.04.2026 IDA '2' Market - Sell



10.04.2026 IDA '2' Market - Buy



GR Bidding Zone Weekly Figures

Delivery Day	04.04	05.04	06.04	07.04	08.04	09.04	10.04
	↓ -52%	↓ -69%	↑ 162%	↑ 55%	↓ -2%	↑ 14%	↑ 3%
Avg.MCP (€/MWh)	62.39	19.53	51.16	79.13	77.38	88.00	90.89
Max.MCP (€/MWh)	150.46	113.90	198.89	199.05	195.91	185.99	182.39
Min.MCP (€/MWh)	-2.10	-50.56	-48.10	-24.00	-29.60	-20.01	-7.00
	↓ -45%	↑ 36%	↔ 27%	↓ -28%	↑ 17%	↑ 14%	↓ -43%
Tot.Vol(GWh)	3.87	5.28	6.68	4.81	5.64	6.42	3.69

Trades by Order Type

Delivery Day		04.04	05.04	06.04	07.04	08.04	09.04	10.04	
Ord Price Type		Sell & Buy Trades in (GWh) per Price Type							(%)
PPT	(S)	0.000	0.000	0.000	0.000	0.000	0.000	0.000	0.00%
HBD	(S)	1.081	1.962	1.218	0.714	1.055	2.885	0.803	43.48%
BLK	(S)	0.000	0.000	0.000	0.000	0.000	0.000	0.000	0.00%
CPL	(S)	0.854	0.676	2.124	1.693	1.764	0.327	1.044	56.52%
PPT	(B)	0.000	0.000	0.000	0.000	0.000	0.000	0.000	0.00%
HBD	(B)	0.856	2.313	2.837	1.898	1.549	1.103	1.109	60.04%
BLK	(B)	0.000	0.000	0.000	0.000	0.000	0.000	0.000	0.00%
CPL	(B)	1.079	0.324	0.505	0.509	1.270	2.109	0.738	39.96%
		Sell & Buy Orders Traded per Price Type							(%)
PPT	(S)	0	0	0	0	0	0	0	0.00%
HBD	(S)	241	399	262	196	262	393	191	100.00%
BLK	(S)	0	0	0	0	0	0	0	0.00%
PPT	(B)	0	0	0	0	0	0	0	0.00%
HBD	(B)	405	430	634	632	353	526	494	100.00%
BLK	(B)	0	0	0	0	0	0	0	0.00%

- MCP** Market Clearing Price (€/MWh)
- PPT** Priority Price-Taking
- HBD** Hybrid
- BLK** Block
- CPL** Market Coupling Flow

Trade's Volume Mix

	Sell - MWh	Buy - MWh	
Lignite (0.0%)	0	0	(0.0%)
Crete Conv. (0.0%)	0	0	(0.0%)
Gas (1.1%)	21	0	(0.0%)
Hydro (4.1%)	77	0	(0.0%)
Imports (56.5%)	1,044		
RES (29.8%)	551	687	(37.2%)
Crete RES (0.0%)	0	0	(0.0%)
BESS (0.0%)	0	0	(0.0%)
HV Load (0.0%)	0	17	(0.9%)
MV Load (3.4%)	63	34	(1.9%)
LV Load (4.9%)	91	370	(20.1%)
Crete Load (0.0%)	0	0	(0.0%)
Pumping (0.0%)	0	0	(0.0%)
Exports		738	(40.0%)
Sys.Losses (0.0%)	0	0	(0.0%)
D/R Load (0.0%)	0	0	(0.0%)

