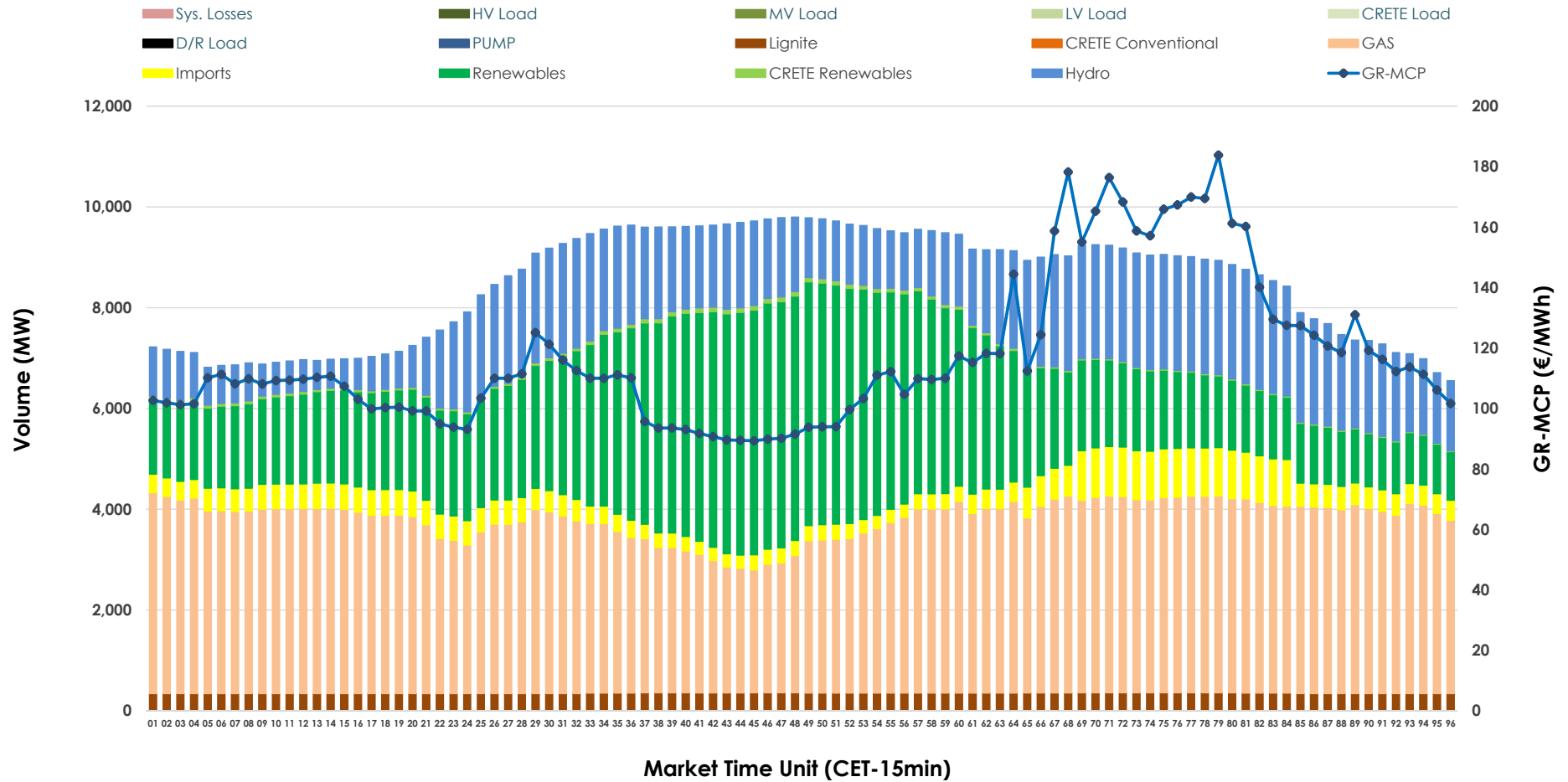


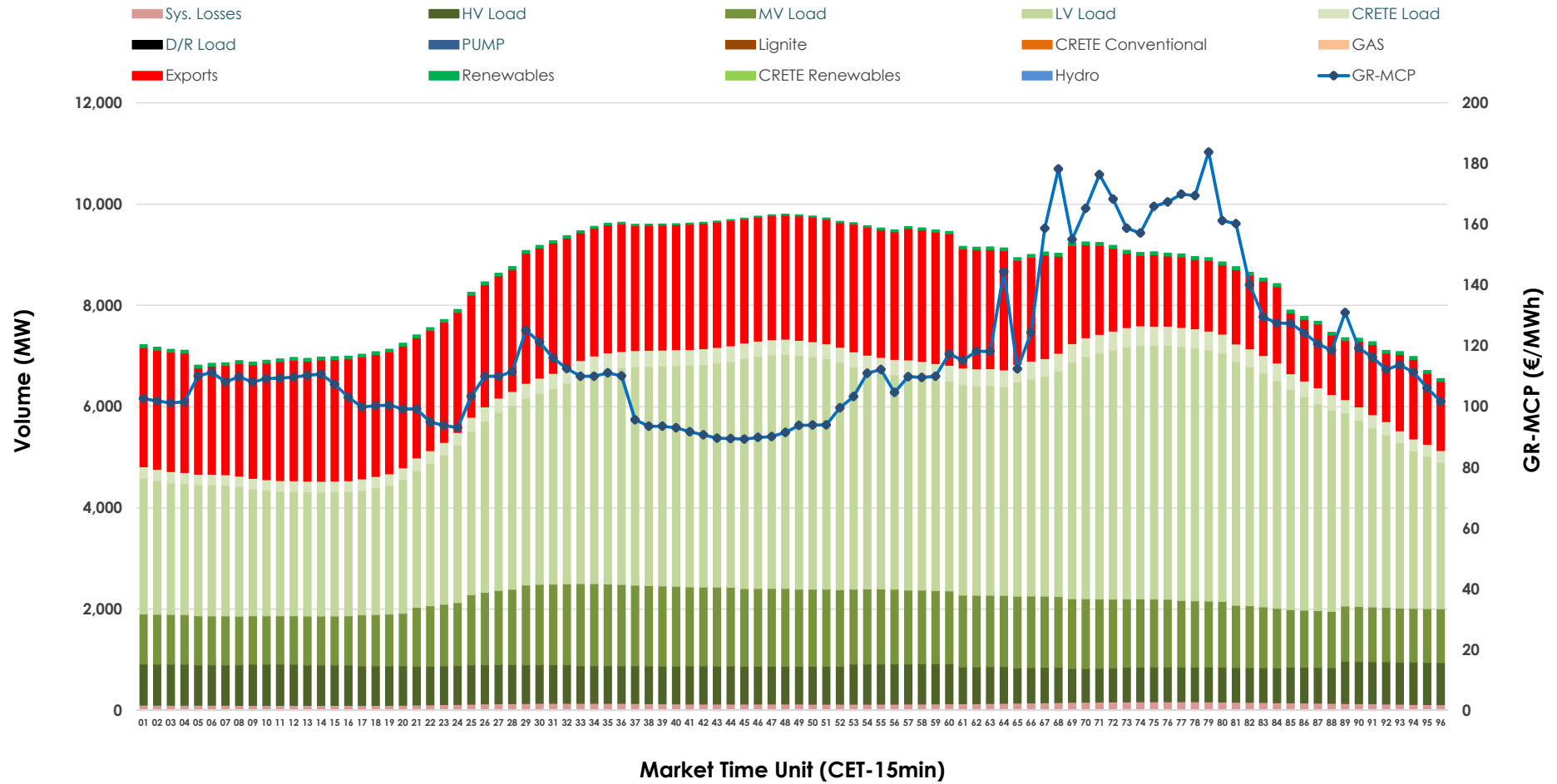


# Day-Ahead Market Outlook

10.02.2026 Day-Ahead Market - Sell



### 10.02.2026 Day-Ahead Market - Buy



### GR Bidding Zone Weekly Figures

Delivery Day	04.02	05.02	06.02	07.02	08.02	09.02	10.02
	👇 -18%	👉 1%	👇 -5%	👇 -28%	👈 26%	👆 50%	👇 -10%
<b>Avg.MCP (€/MWh)</b>	100.27	101.12	96.42	69.15	87.19	130.53	117.00
<b>Max.MCP (€/MWh)</b>	137.73	158.84	143.87	138.17	137.01	217.65	183.80
<b>Min.MCP (€/MWh)</b>	0.01	52.50	0.10	-0.10	0.01	96.06	89.31
	👉 0%	👉 1%	👇 -3%	👇 -6%	👇 -4%	👈 4%	👈 5%
<b>Tot.Vol(GWh)</b>	422.19	425.83	412.48	387.98	372.80	387.84	407.28

### Trades by Order Type

Delivery Day		04.02	05.02	06.02	07.02	08.02	09.02	10.02	
<b>Ord Price Type</b>		<b>Sell &amp; Buy Trades in (GWh) per Price Type</b>							<b>(%)</b>
<b>PPT</b>	(S)	99.050	100.032	98.643	97.391	90.104	88.222	95.796	47.04%
<b>HBD</b>	(S)	71.845	75.250	72.470	75.676	70.823	62.341	69.091	33.93%
<b>BLK</b>	(S)	40.198	37.633	32.126	20.926	25.473	40.788	36.594	17.97%
<b>CPL</b>	(S)	0.000	0.000	3.000	0.000	0.000	2.568	2.161	1.06%
<b>PPT</b>	(B)	13.914	13.913	13.578	13.223	13.616	13.693	13.846	6.80%
<b>HBD</b>	(B)	151.872	152.005	148.188	135.733	132.020	145.360	150.538	73.92%
<b>BLK</b>	(B)	0.000	0.000	0.000	0.000	0.000	0.000	0.000	0.00%
<b>CPL</b>	(B)	45.307	46.997	44.473	45.036	40.764	34.865	39.257	19.28%
		<b>Sell &amp; Buy Orders Traded per Price Type</b>							<b>(%)</b>
<b>PPT</b>	(S)	2251	2154	2193	2220	2129	2318	2423	45.12%
<b>HBD</b>	(S)	2798	2809	2799	2348	2697	3008	2939	54.73%
<b>BLK</b>	(S)	15	13	13	8	11	12	8	0.15%
<b>PPT</b>	(B)	2234	2227	2220	2356	2334	2236	2234	35.67%
<b>HBD</b>	(B)	3985	3881	4062	4294	4200	3870	4029	64.33%
<b>BLK</b>	(B)	0	0	0	0	0	0	0	0.00%

**MCP** Market Clearing Price (€/MWh)  
**PPT** Priority Price-Taking  
**HBD** Hybrid  
**BLK** Block  
**CPL** Market Coupling Flow

### Trade's Volume Mix

		Sell - MWh	Buy - MWh	
<b>Lignite</b>	(4.1%)	8,338	0	(0.0%)
<b>Crete Conv.</b>	(0.0%)	0	0	(0.0%)
<b>Gas</b>	(41.0%)	83,580	0	(0.0%)
<b>Hydro</b>	(18.9%)	38,452	0	(0.0%)
<b>Imports</b>	(5.8%)	11,892		
<b>RES</b>	(29.6%)	60,198	1,089	(0.5%)
<b>Crete RES</b>	(0.6%)	1,181	0	(0.0%)
<b>HV Load</b>	(0.0%)	0	18,119	(8.9%)
<b>MV Load</b>	(0.0%)	0	31,223	(15.3%)
<b>LV Load</b>	(0.0%)	0	92,122	(45.2%)
<b>Crete Load</b>	(0.0%)	0	7,068	(3.5%)
<b>Pumping</b>	(0.0%)	0	0	(0.0%)
<b>Exports</b>			50,861	(25.0%)
<b>Sys.Losses</b>	(0.0%)	0	3,160	(1.6%)
<b>D/R Load</b>	(0.0%)	0	0	(0.0%)

