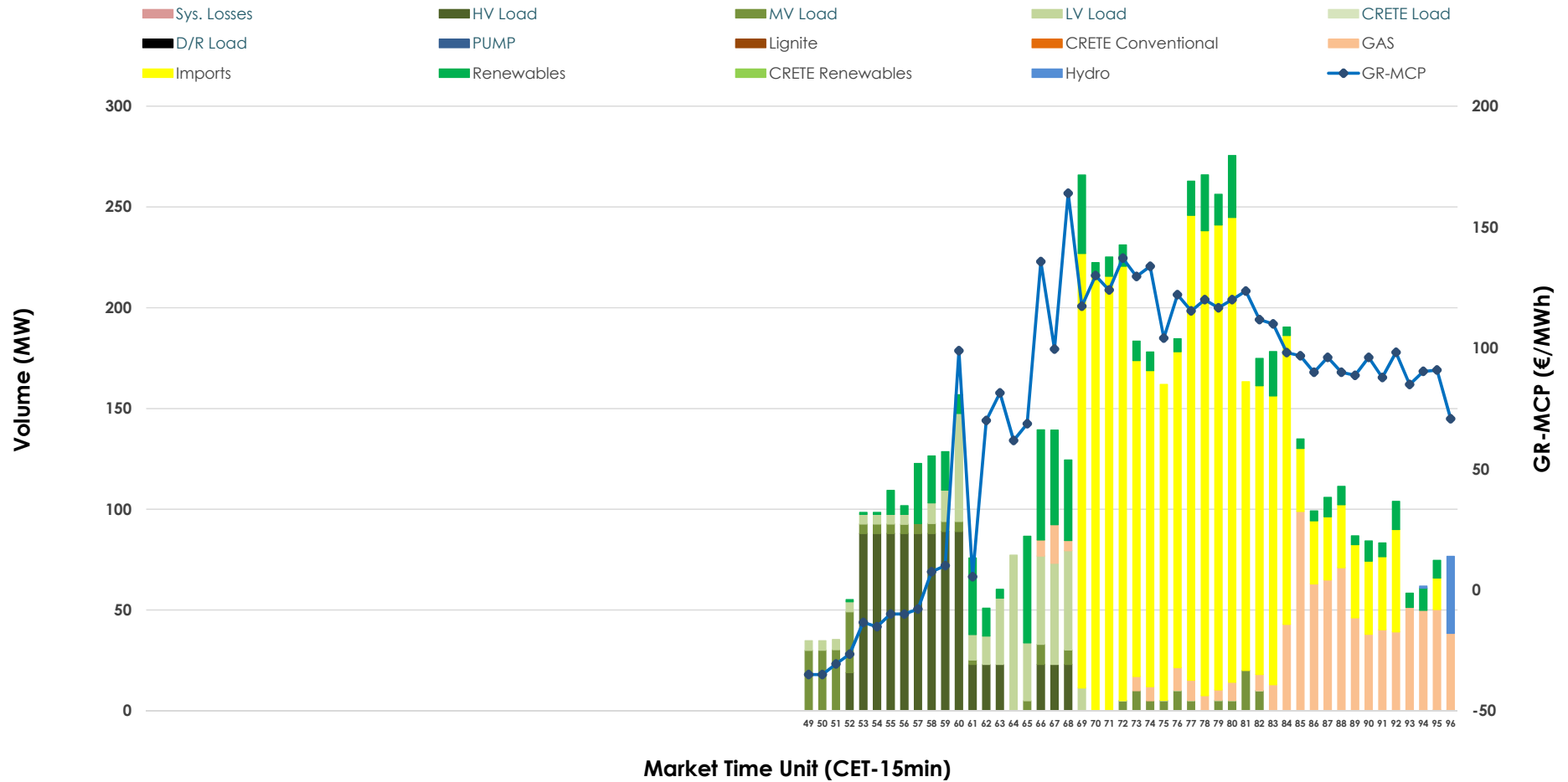


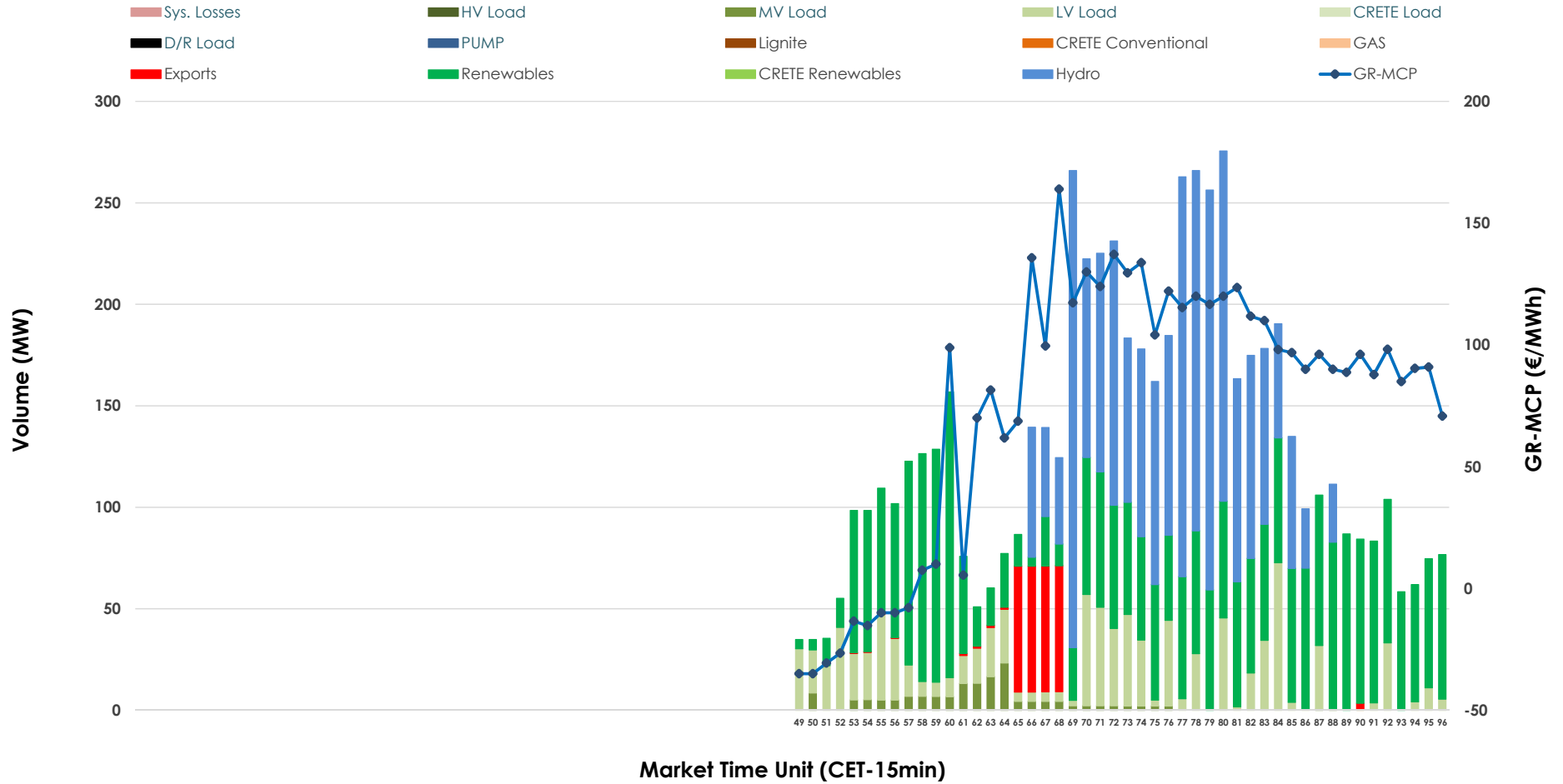


IDA '3' Market Outlook

16.02.2026 IDA '3' Market - Sell



16.02.2026 IDA '3' Market - Buy



GR Bidding Zone Weekly Figures

Delivery Day	10.02	11.02	12.02	13.02	14.02	15.02	16.02
	👉 -14%	👉 -32%	👉 -18%	👈 43%	👇 -42%	👉 -27%	👈 78%
Avg.MCP (€/MWh)	125.29	85.74	70.24	100.63	58.35	42.34	75.28
Max.MCP (€/MWh)	176.20	145.63	101.74	148.40	108.25	92.78	163.98
Min.MCP (€/MWh)	83.83	-35.00	-24.99	47.95	1.44	-8.53	-35.00
	👇 -82%	👈 115%	👇 -65%	👈 276%	👇 -38%	👉 5%	👉 32%
Tot.Vol(GWh)	1.31	2.82	0.99	3.70	2.29	2.40	3.18

Trades by Order Type

Delivery Day		10.02	11.02	12.02	13.02	14.02	15.02	16.02	
Ord Price Type		Sell & Buy Trades in (GWh) per Price Type							(%)
PPT	(S)	0.000	0.000	0.000	0.000	0.000	0.000	0.000	0.00%
HBD	(S)	0.543	1.399	0.493	1.744	1.092	1.202	0.768	48.31%
BLK	(S)	0.000	0.000	0.000	0.000	0.000	0.000	0.000	0.00%
CPL	(S)	0.114	0.013	0.000	0.108	0.052	0.000	0.822	51.69%
PPT	(B)	0.000	0.000	0.000	0.000	0.000	0.000	0.000	0.00%
HBD	(B)	0.551	0.234	0.453	1.435	1.113	1.027	1.525	95.96%
BLK	(B)	0.000	0.000	0.000	0.000	0.000	0.000	0.000	0.00%
CPL	(B)	0.106	1.178	0.040	0.417	0.031	0.175	0.064	4.04%
		Sell & Buy Orders Traded per Price Type							(%)
PPT	(S)	0	0	0	0	0	0	0	0.00%
HBD	(S)	166	207	147	158	203	165	181	100.00%
BLK	(S)	0	0	0	0	0	0	0	0.00%
PPT	(B)	0	0	0	0	0	0	0	0.00%
HBD	(B)	333	108	208	366	207	137	330	100.00%
BLK	(B)	0	0	0	0	0	0	0	0.00%

- MCP** Market Clearing Price (€/MWh)
- PPT** Priority Price-Taking
- HBD** Hybrid
- BLK** Block
- CPL** Market Coupling Flow

Trade's Volume Mix

	Sell - MWh	Buy - MWh	
Lignite (0.0%)	0	0	(0.0%)
Crete Conv. (0.0%)	0	0	(0.0%)
Gas (12.6%)	201	0	(0.0%)
Hydro (0.6%)	10	576	(36.2%)
Imports (51.7%)	822		
RES (10.4%)	165	675	(42.5%)
Crete RES (0.0%)	0	0	(0.0%)
HV Load (13.6%)	216	0	(0.0%)
MV Load (4.1%)	66	40	(2.5%)
LV Load (6.9%)	110	235	(14.8%)
Crete Load (0.0%)	0	0	(0.0%)
Pumping (0.0%)	0	0	(0.0%)
Exports		64	(4.0%)
Sys.Losses (0.0%)	0	0	(0.0%)
D/R Load (0.0%)	0	0	(0.0%)

