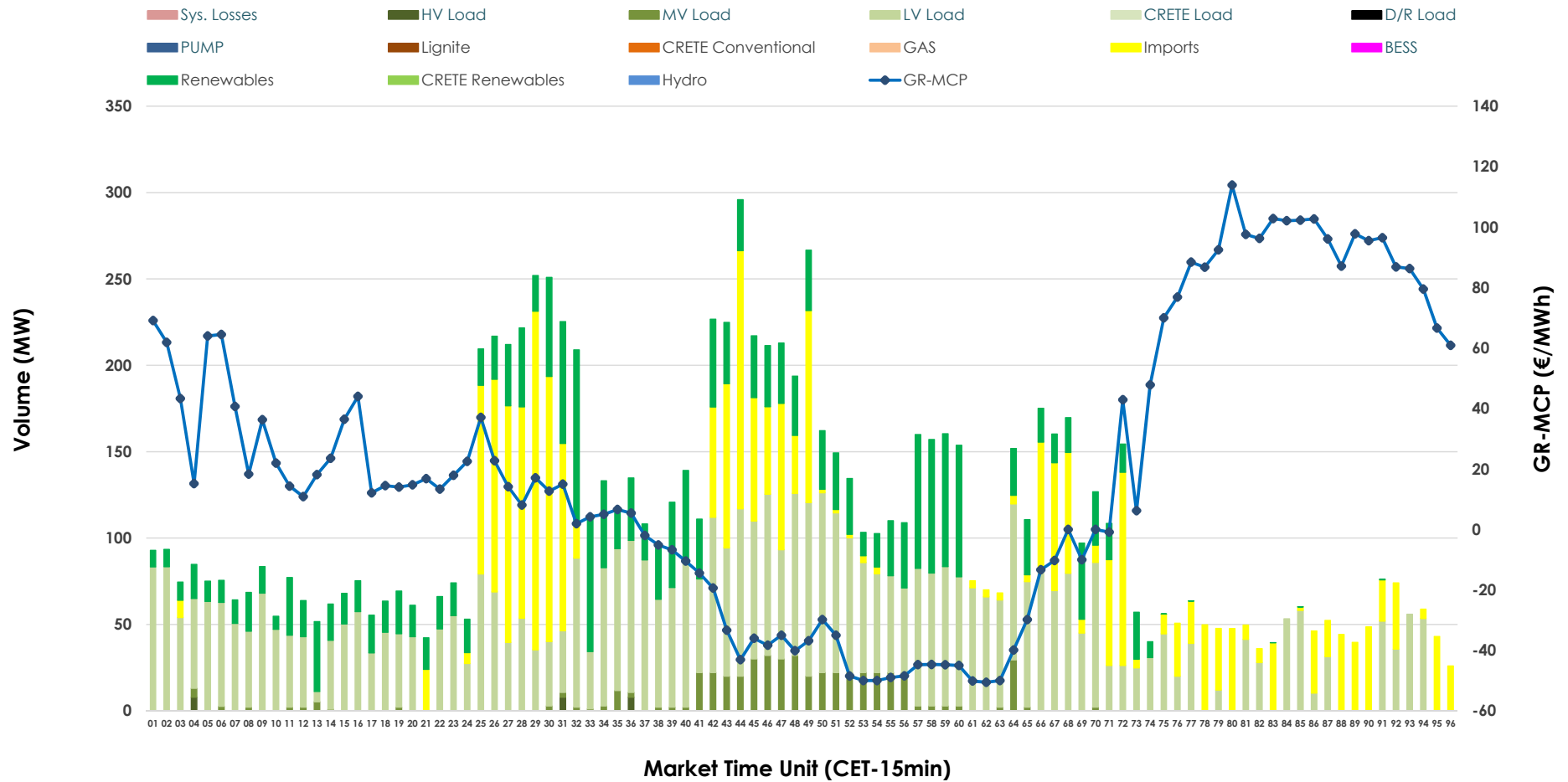


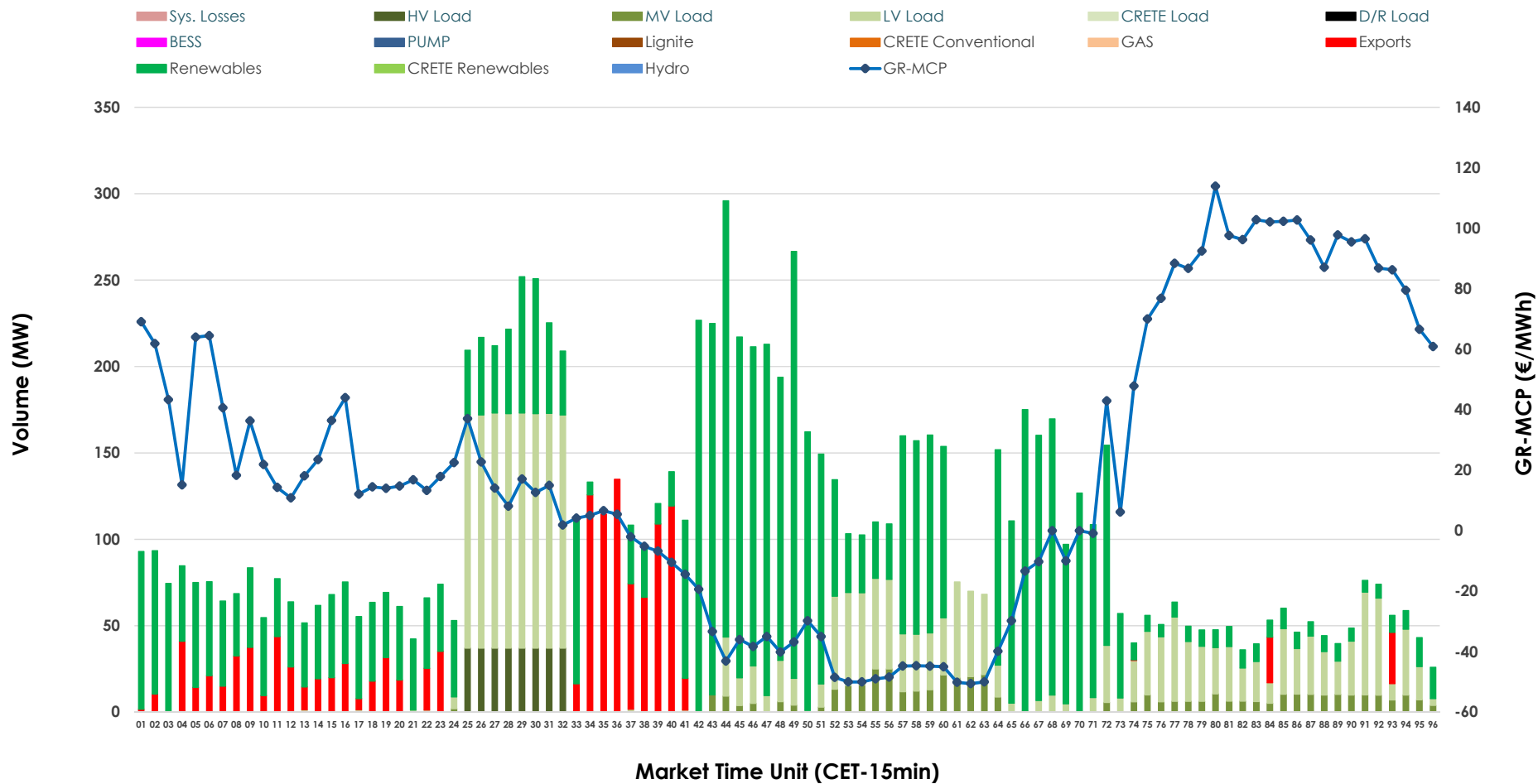


IDA '2' Market Outlook

05.04.2026 IDA '2' Market - Sell



05.04.2026 IDA '2' Market - Buy



GR Bidding Zone Weekly Figures

Delivery Day	30.03	31.03	01.04	02.04	03.04	04.04	05.04
	↑ 57%	↔ 18%	↔ 11%	↓ -11%	↓ -4%	↓ -52%	↓ -69%
Avg.MCP (€/MWh)	115.06	135.71	150.68	134.81	129.15	62.39	19.53
Max.MCP (€/MWh)	222.69	223.43	227.84	207.31	218.30	150.46	113.90
Min.MCP (€/MWh)	0.00	84.06	103.20	94.56	36.29	-2.10	-50.56
	↔ 11%	↑ 37%	↑ 54%	↔ 12%	↓ -23%	↓ -45%	↑ 36%
Tot.Vol(GWh)	3.84	5.26	8.13	9.11	7.02	3.87	5.28

Trades by Order Type

Delivery Day		30.03	31.03	01.04	02.04	03.04	04.04	05.04	
Ord Price Type		Sell & Buy Trades in (GWh) per Price Type							(%)
PPT	(S)	0.000	0.000	0.000	0.000	0.000	0.000	0.000	0.00%
HBD	(S)	1.209	2.216	2.487	1.846	1.233	1.081	1.962	74.38%
BLK	(S)	0.000	0.000	0.000	0.000	0.000	0.000	0.000	0.00%
CPL	(S)	0.709	0.416	1.580	2.711	2.278	0.854	0.676	25.62%
PPT	(B)	0.000	0.000	0.000	0.000	0.000	0.000	0.000	0.00%
HBD	(B)	1.465	1.028	2.032	1.944	1.159	0.856	2.313	87.70%
BLK	(B)	0.000	0.000	0.000	0.000	0.000	0.000	0.000	0.00%
CPL	(B)	0.453	1.605	2.034	2.613	2.352	1.079	0.324	12.30%
		Sell & Buy Orders Traded per Price Type							(%)
PPT	(S)	0	0	0	0	0	0	0	0.00%
HBD	(S)	407	443	274	398	389	241	399	100.00%
BLK	(S)	0	0	0	0	0	0	0	0.00%
PPT	(B)	0	0	0	0	0	0	0	0.00%
HBD	(B)	511	587	571	409	404	405	430	100.00%
BLK	(B)	0	0	0	0	0	0	0	0.00%

- MCP** Market Clearing Price (€/MWh)
- PPT** Priority Price-Taking
- HBD** Hybrid
- BLK** Block
- CPL** Market Coupling Flow

Trade's Volume Mix

	Sell - MWh	Buy - MWh	
Lignite (0.0%)	0	0	(0.0%)
Crete Conv. (0.0%)	0	0	(0.0%)
Gas (0.0%)	0	0	(0.0%)
Hydro (0.0%)	0	0	(0.0%)
Imports (25.6%)	676		
RES (21.4%)	564	1,483	(56.2%)
Crete RES (0.0%)	0	0	(0.0%)
BESS (0.0%)	0	0	(0.0%)
HV Load (0.2%)	6	74	(2.8%)
MV Load (4.6%)	121	114	(4.3%)
LV Load (48.2%)	1,271	642	(24.3%)
Crete Load (0.0%)	0	0	(0.0%)
Pumping (0.0%)	0	0	(0.0%)
Exports		324	(12.3%)
Sys.Losses (0.0%)	0	0	(0.0%)
D/R Load (0.0%)	0	0	(0.0%)

