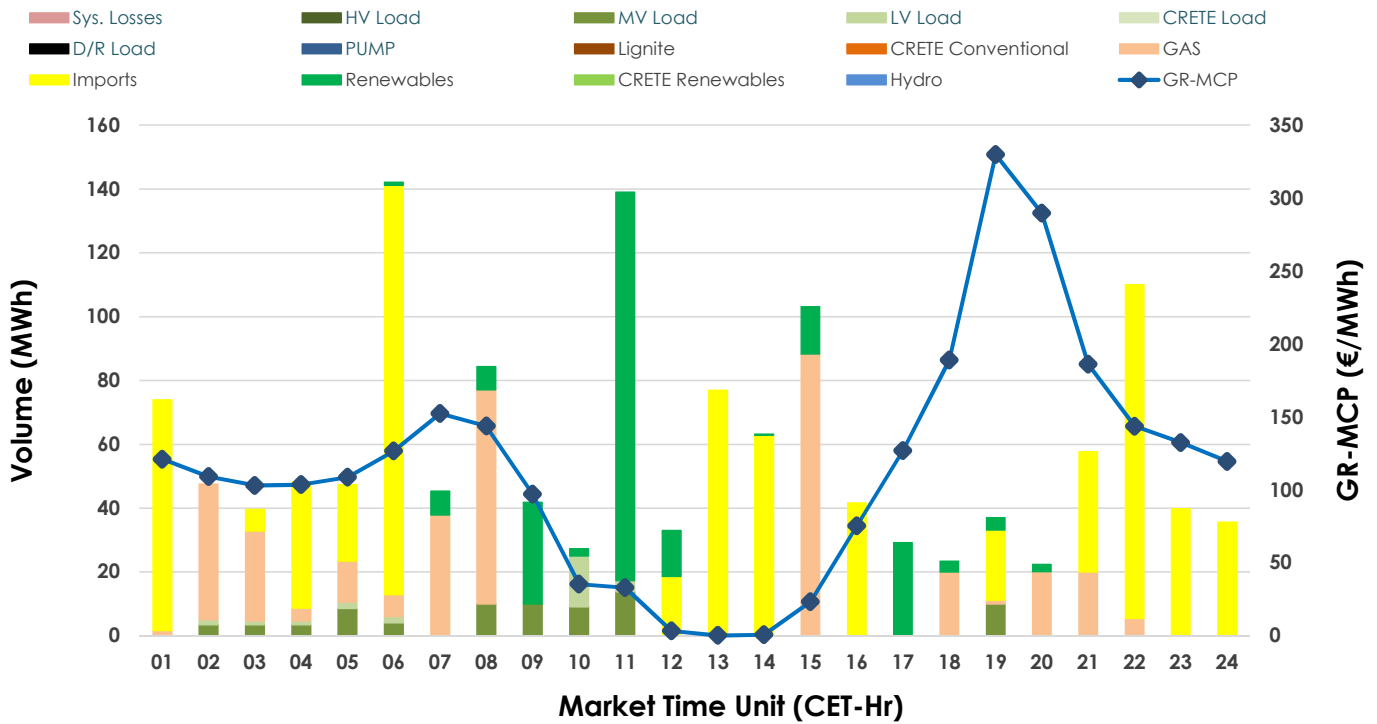
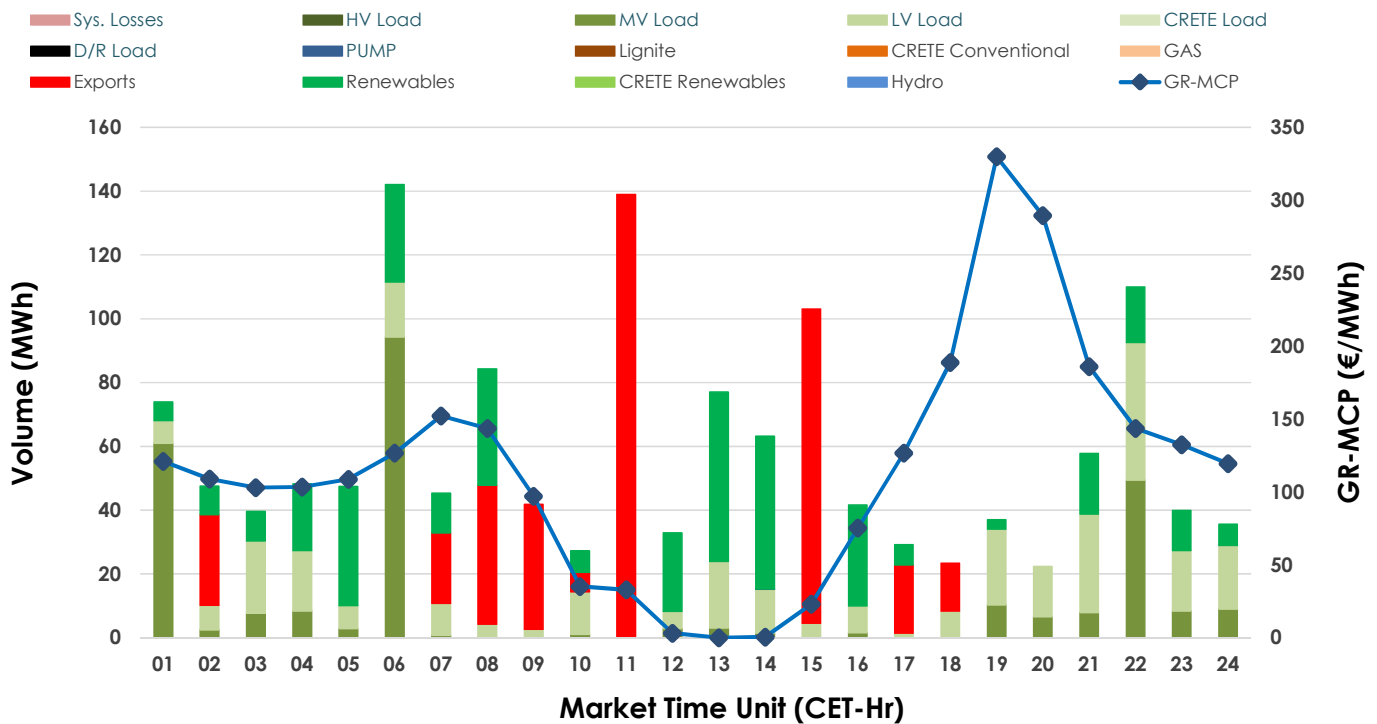


## 20.03.2025 IDA '2' Market - Sell



## 20.03.2025 IDA '2' Market - Buy



## GR Bidding Zone Weekly Figures

Delivery Day	14.03	15.03	16.03	17.03	18.03	19.03	20.03
	↗ 3%	↘ -9%	↘ -5%	↗ 20%	↗ 9%	→ 0%	↗ 14%
Avg.MCP (€/MWh)	89.46	81.51	77.21	92.44	100.68	100.46	114.67
Max.MCP (€/MWh)	154.37	153.61	143.48	169.88	177.19	247.96	329.80
Min.MCP (€/MWh)	7.88	11.10	6.95	25.19	35.22	-5.00	0.13
	↑ 144%	↓ -45%	↔ 3%	↑ 35%	↘ -19%	↑ 259%	↘ -33%
Tot.Vol(GWh)	1.90	1.05	1.08	1.45	1.17	4.20	2.82

## Trades by Order Type

Delivery Day	14.03	15.03	16.03	17.03	18.03	19.03	20.03
Order P.T	Sell & Buy Trades in (GWh) per Price Type						
PPT (S)							
HBD (S)	0.949	0.525	0.538	0.726	0.586	0.293	0.699
BLK (S)							
CPL (S)						1.809	0.710
PPT (B)							
HBD (B)	0.949	0.525	0.538	0.721	0.586	2.006	0.996
BLK (B)							
CPL (B)				0.005		0.096	0.413
Order P.T	Sell & Buy Orders Traded per Price Type						
PPT (S)							
HBD (S)	153	105	172	142	131	69	83
BLK (S)							
PPT (B)							
HBD (B)	122	116	134	126	158	208	167
BLK (B)							

<b>MCP</b>	Market Clearing Price (€/MWh)
<b>PPT</b>	Priority Price-Taking
<b>HBD</b>	Hybrid
<b>BLK</b>	Block
<b>CPL</b>	Market Coupling Flow

## Trade's Volume Mix

	Sell - MWh	Buy - MWh	
Lignite	(0.0%) 0	0	(0.0%)
Crete Conv.	(0.0%) 0	0	(0.0%)
Gas	(25.3%) 356	0	(0.0%)
Hydro	(0.0%) 0	0	(0.0%)
Imports	(50.4%) 710		
RES	(17.0%) 239	390	(27.7%)
Crete RES	(0.0%) 0	0	(0.0%)
HV Load	(0.0%) 0	0	(0.0%)
MV Load	(5.4%) 76	280	(19.8%)
LV Load	(2.0%) 28	326	(23.2%)
Crete Load	(0.0%) 0	0	(0.0%)
Pumping	(0.0%) 0	0	(0.0%)
Exports		413	(29.3%)
Sys.Losses	(0.0%) 0	0	(0.0%)
D/R Load	(0.0%) 0	0	(0.0%)

