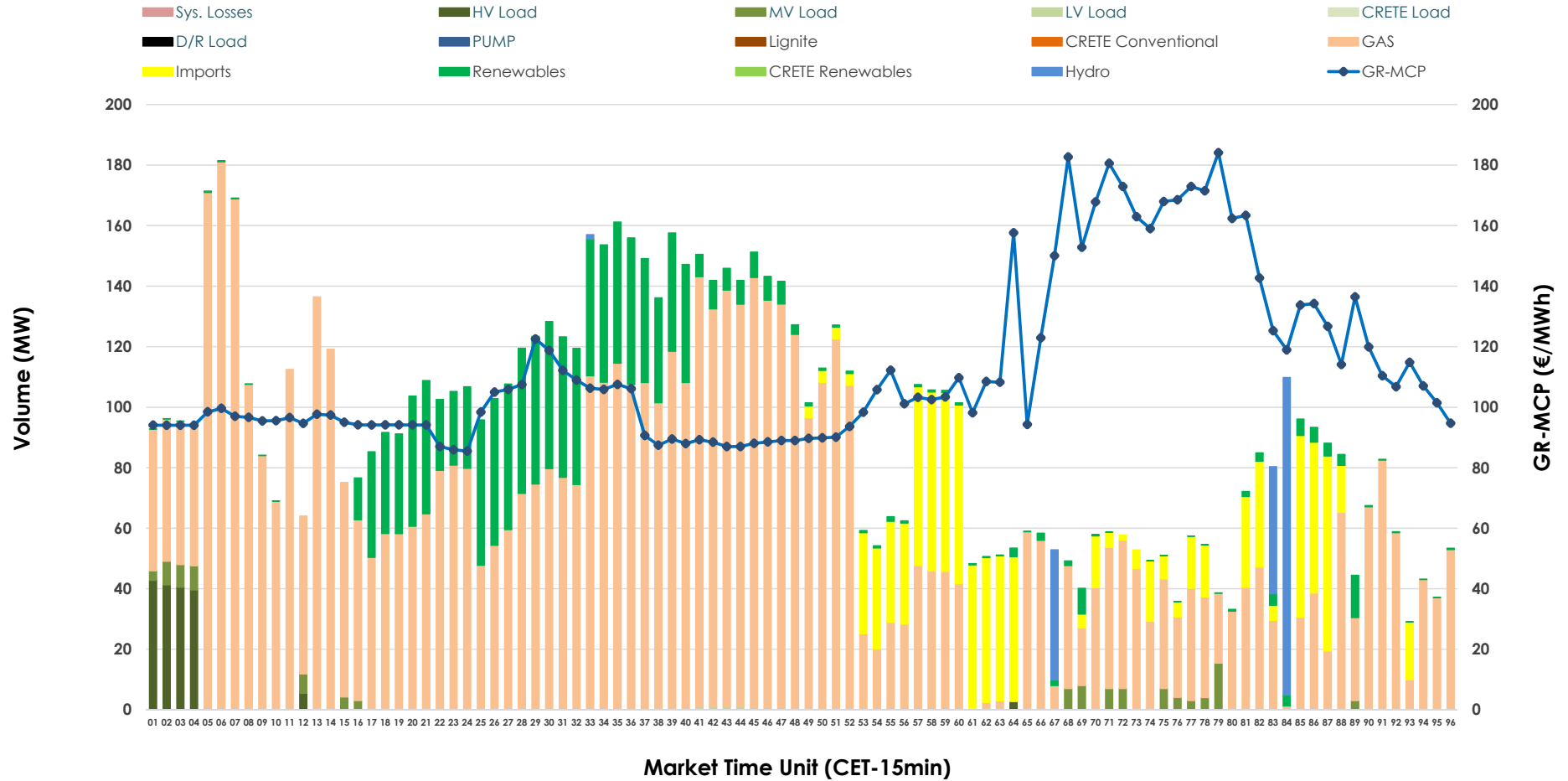


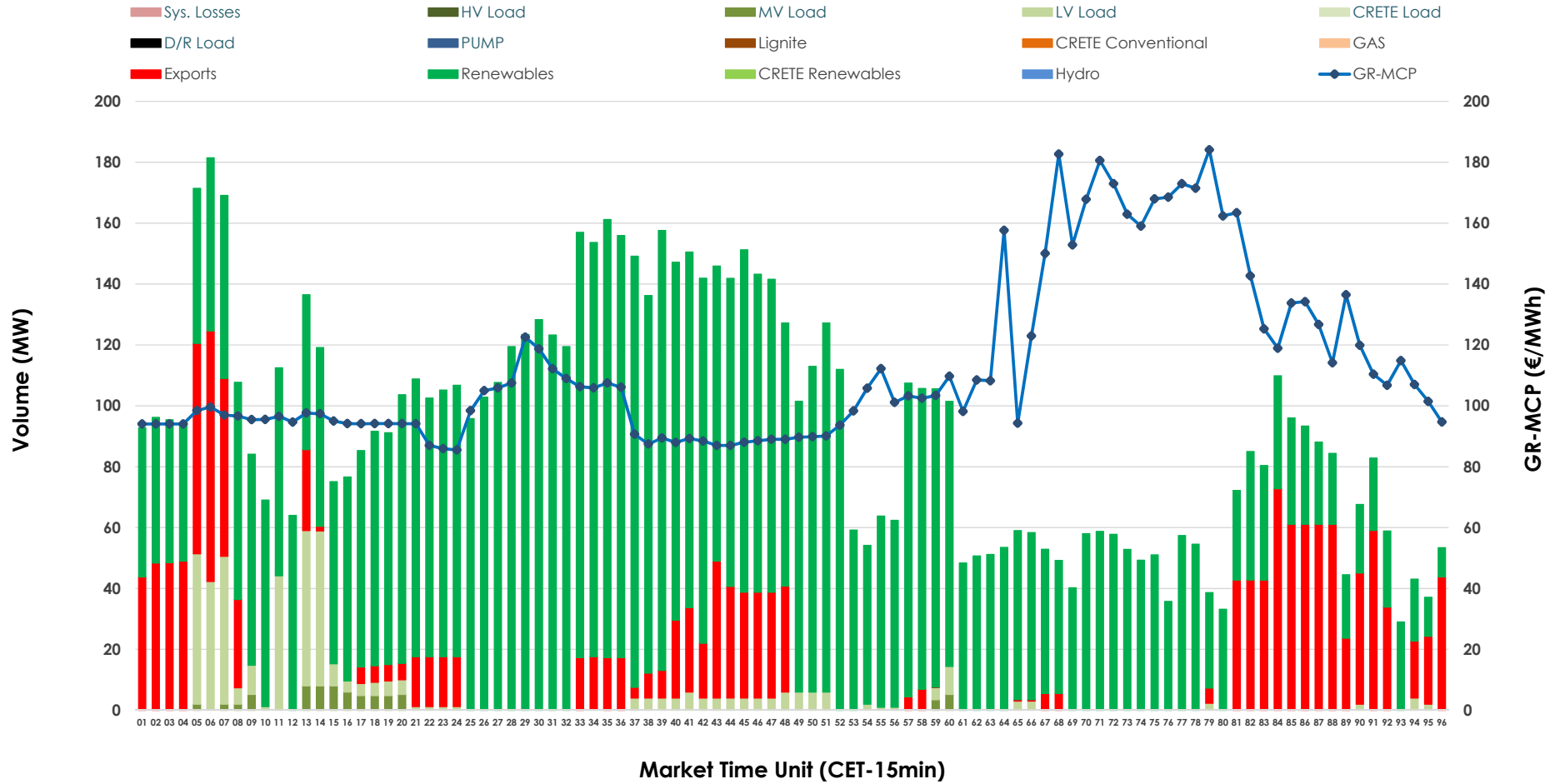


IDA '2' Market Outlook

10.02.2026 IDA '2' Market - Sell



10.02.2026 IDA '2' Market - Buy



GR Bidding Zone Weekly Figures

Delivery Day	04.02	05.02	06.02	07.02	08.02	09.02	10.02
	👇 -17%	👈 3%	➡ 0%	👇 -17%	👈 18%	👆 43%	👇 -14%
Avg.MCP (€/MWh)	91.23	93.97	94.02	78.28	92.03	131.37	112.78
Max.MCP (€/MWh)	143.17	160.61	138.97	147.50	136.14	217.55	184.09
Min.MCP (€/MWh)	24.69	47.50	36.39	-2.23	8.64	91.39	85.49
	👇 -50%	👆 56%	👇 -28%	👆 226%	👇 -27%	👇 -30%	👈 30%
Tot.Vol(GWh)	1.87	2.91	2.08	6.80	4.96	3.49	4.54

Trades by Order Type

Delivery Day		04.02	05.02	06.02	07.02	08.02	09.02	10.02	
Ord Price Type		Sell & Buy Trades in (GWh) per Price Type							(%)
PPT	(S)	0.000	0.000	0.000	0.000	0.000	0.000	0.000	0.00%
HBD	(S)	0.903	1.006	0.971	2.916	2.161	1.173	2.028	89.44%
BLK	(S)	0.000	0.000	0.000	0.000	0.000	0.000	0.000	0.00%
CPL	(S)	0.032	0.450	0.071	0.481	0.320	0.572	0.240	10.56%
PPT	(B)	0.000	0.000	0.000	0.000	0.000	0.000	0.000	0.00%
HBD	(B)	0.690	1.001	0.995	3.052	2.212	1.435	1.857	81.87%
BLK	(B)	0.000	0.000	0.000	0.000	0.000	0.000	0.000	0.00%
CPL	(B)	0.246	0.456	0.046	0.346	0.269	0.311	0.411	18.13%
		Sell & Buy Orders Traded per Price Type							(%)
PPT	(S)	0	0	0	0	0	0	0	0.00%
HBD	(S)	181	422	218	338	210	274	173	100.00%
BLK	(S)	0	0	0	0	0	0	0	0.00%
PPT	(B)	0	0	0	0	0	0	0	0.00%
HBD	(B)	336	348	487	389	477	493	477	100.00%
BLK	(B)	0	0	0	0	0	0	0	0.00%

- MCP** Market Clearing Price (€/MWh)
- PPT** Priority Price-Taking
- HBD** Hybrid
- BLK** Block
- CPL** Market Coupling Flow

Trade's Volume Mix

	Sell - MWh	Buy - MWh	
Lignite (0.0%)	0	0	(0.0%)
Crete Conv. (0.0%)	0	0	(0.0%)
Gas (71.7%)	1,626	0	(0.0%)
Hydro (2.1%)	48	0	(0.0%)
Imports (10.6%)	240		
RES (12.5%)	283	1,729	(76.3%)
Crete RES (0.0%)	0	0	(0.0%)
HV Load (1.9%)	43	0	(0.0%)
MV Load (1.2%)	26	17	(0.8%)
LV Load (0.1%)	2	110	(4.9%)
Crete Load (0.0%)	0	0	(0.0%)
Pumping (0.0%)	0	0	(0.0%)
Exports		411	(18.1%)
Sys.Losses (0.0%)	0	0	(0.0%)
D/R Load (0.0%)	0	0	(0.0%)

