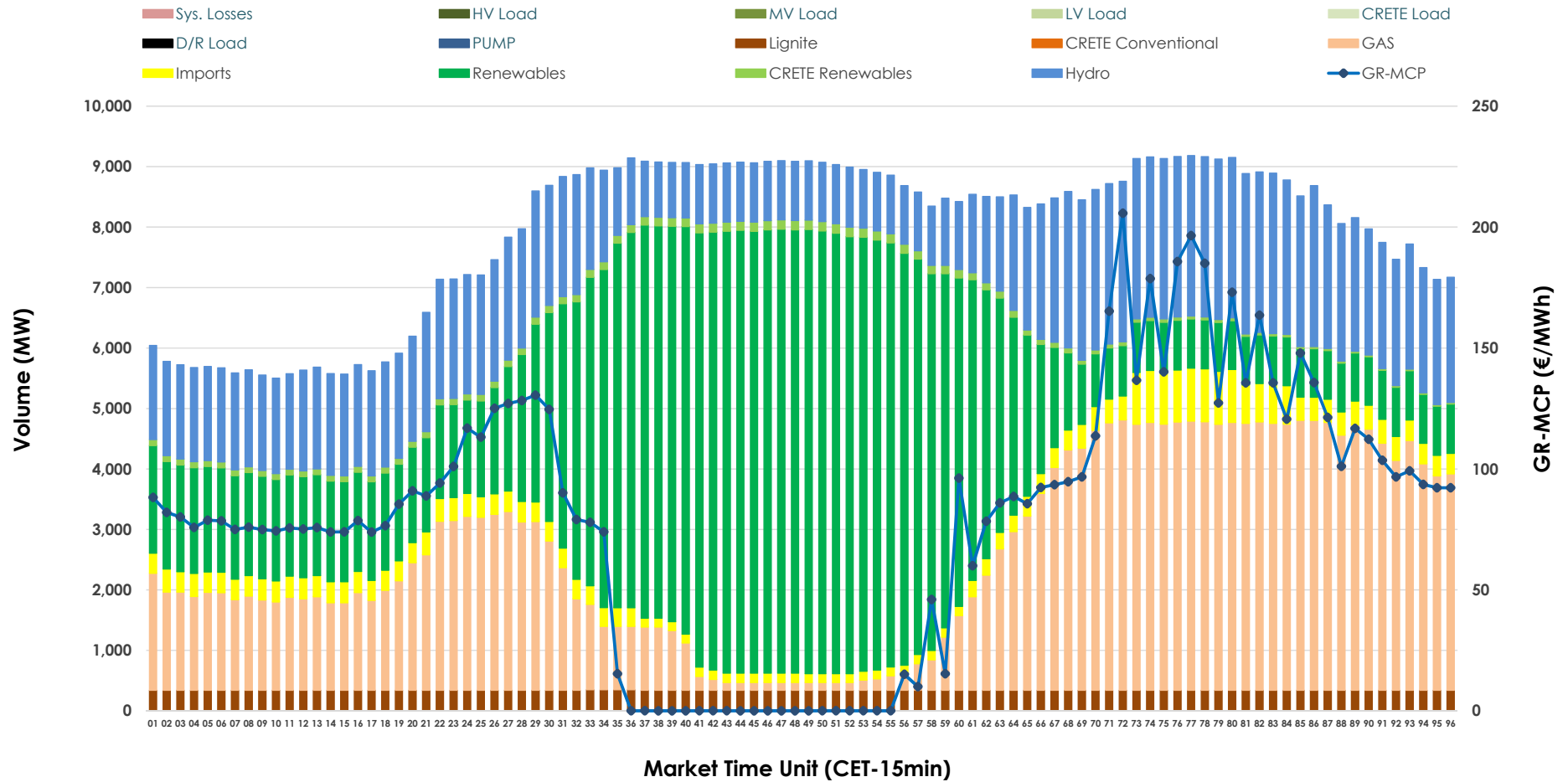


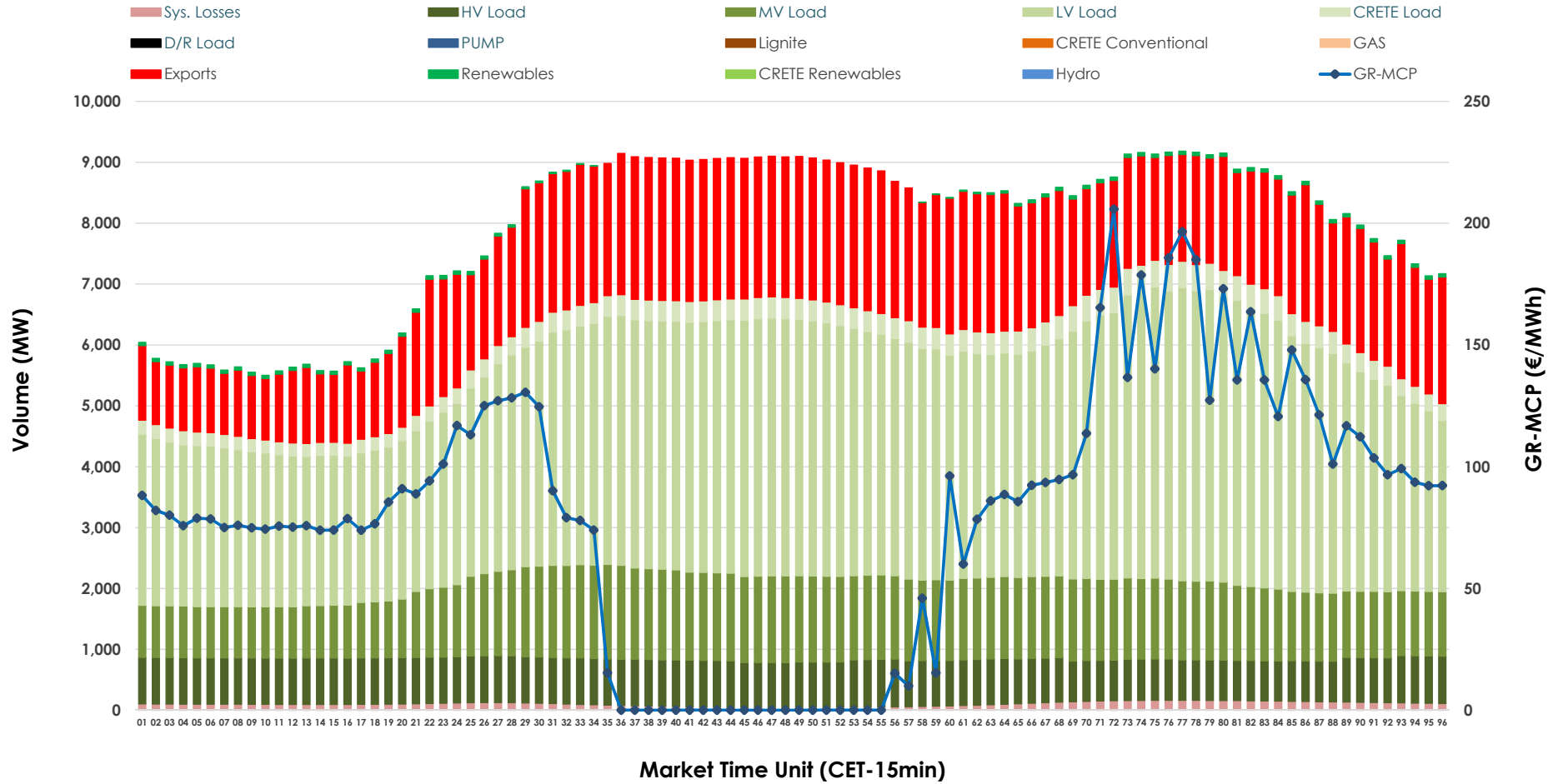


Day-Ahead Market Outlook

02.03.2026 Day-Ahead Market - Sell



02.03.2026 Day-Ahead Market - Buy



GR Bidding Zone Weekly Figures

Delivery Day	24.02	25.02	26.02	27.02	28.02	01.03	02.03
	↑ 48%	↓ -16%	↔ 5%	↗ 15%	↓ -21%	↓ -23%	↑ 100%
Avg.MCP (€/MWh)	65.00	54.54	57.09	65.66	52.12	40.11	80.04
Max.MCP (€/MWh)	144.77	147.61	129.65	146.17	105.16	112.24	205.76
Min.MCP (€/MWh)	0.00	0.00	-0.01	0.01	-0.04	-1.03	0.00
	↗ 10%	→ 0%	↗ 4%	↓ -1%	↓ -7%	→ -1%	↗ 3%
Tot.Vol(GWh)	385.95	387.02	403.23	399.06	371.47	369.53	381.72

Trades by Order Type

Delivery Day		24.02	25.02	26.02	27.02	28.02	01.03	02.03	
Ord Price Type		Sell & Buy Trades in (GWh) per Price Type							(%)
PPT	(S)	113.831	106.228	115.405	107.369	113.204	110.143	97.023	50.83%
HBD	(S)	58.754	62.460	64.030	66.550	56.490	60.318	64.656	33.88%
BLK	(S)	20.389	23.405	22.178	25.283	16.041	14.306	27.861	14.60%
CPL	(S)	0.000	1.418	0.000	0.327	0.000	0.000	1.320	0.69%
PPT	(B)	12.416	13.257	13.008	12.878	13.841	12.531	12.663	6.63%
HBD	(B)	145.355	146.689	148.228	150.080	138.903	130.663	144.885	75.91%
BLK	(B)	0.000	0.000	0.000	0.000	0.000	0.000	0.000	0.00%
CPL	(B)	35.202	33.565	40.377	36.571	32.991	41.573	33.312	17.45%
		Sell & Buy Orders Traded per Price Type							(%)
PPT	(S)	2559	2404	2414	2382	2360	2304	2276	44.84%
HBD	(S)	2570	2410	2446	2859	2414	2254	2788	54.93%
BLK	(S)	9	9	8	12	7	5	12	0.24%
PPT	(B)	2216	2224	2237	2233	2317	2301	2187	35.53%
HBD	(B)	4109	4137	4113	4005	4039	4038	3969	64.47%
BLK	(B)	0	0	0	0	0	0	0	0.00%

- MCP** Market Clearing Price (€/MWh)
- PPT** Priority Price-Taking
- HBD** Hybrid
- BLK** Block
- CPL** Market Coupling Flow

Trade's Volume Mix

		Sell - MWh	Buy - MWh	
Lignite	(4.3%)	8,169	0	(0.0%)
Crete Conv.	(0.0%)	0	0	(0.0%)
Gas	(28.7%)	54,716	0	(0.0%)
Hydro	(22.2%)	42,447	0	(0.0%)
Imports	(4.4%)	8,452		
RES	(39.2%)	74,747	872	(0.5%)
Crete RES	(1.2%)	2,329	0	(0.0%)
HV Load	(0.0%)	0	17,728	(9.3%)
MV Load	(0.0%)	0	29,474	(15.4%)
LV Load	(0.0%)	0	87,435	(45.8%)
Crete Load	(0.0%)	0	7,809	(4.1%)
Pumping	(0.0%)	0	0	(0.0%)
Exports			45,062	(23.6%)
Sys.Losses	(0.0%)	0	2,480	(1.3%)
D/R Load	(0.0%)	0	0	(0.0%)

