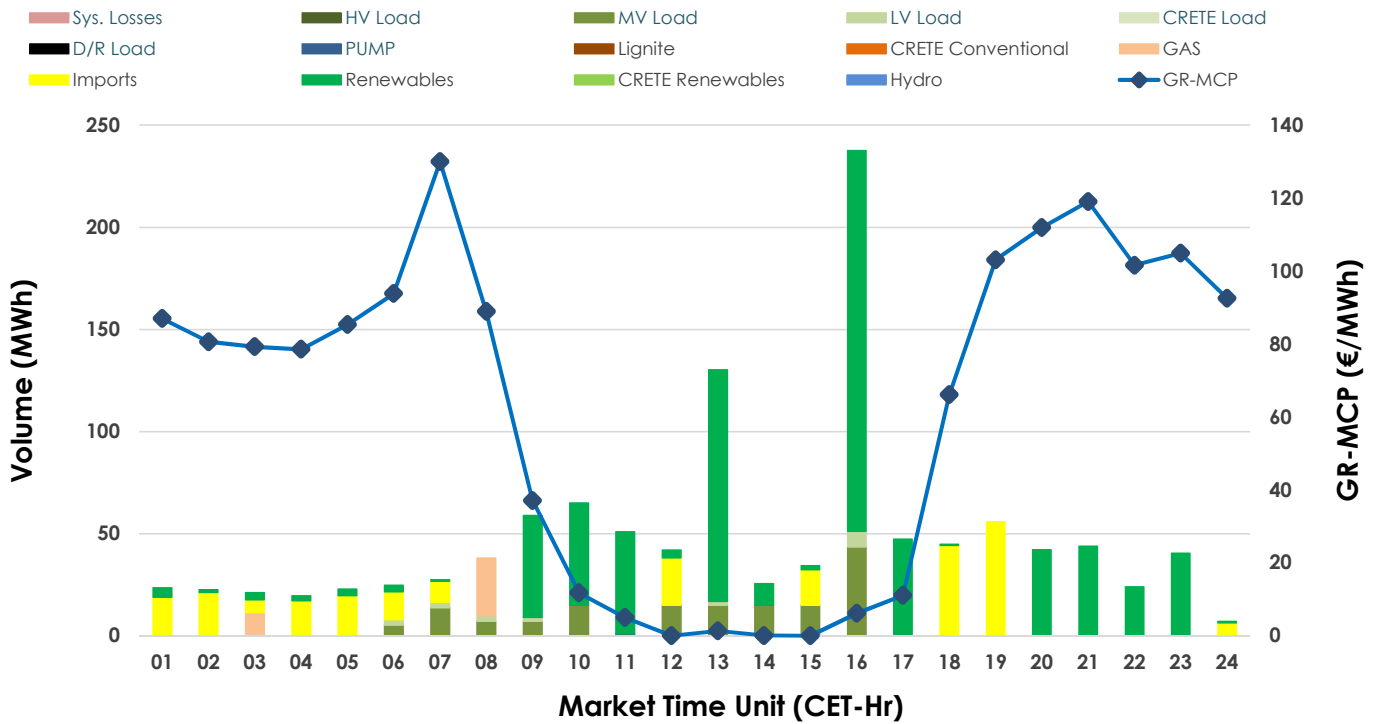
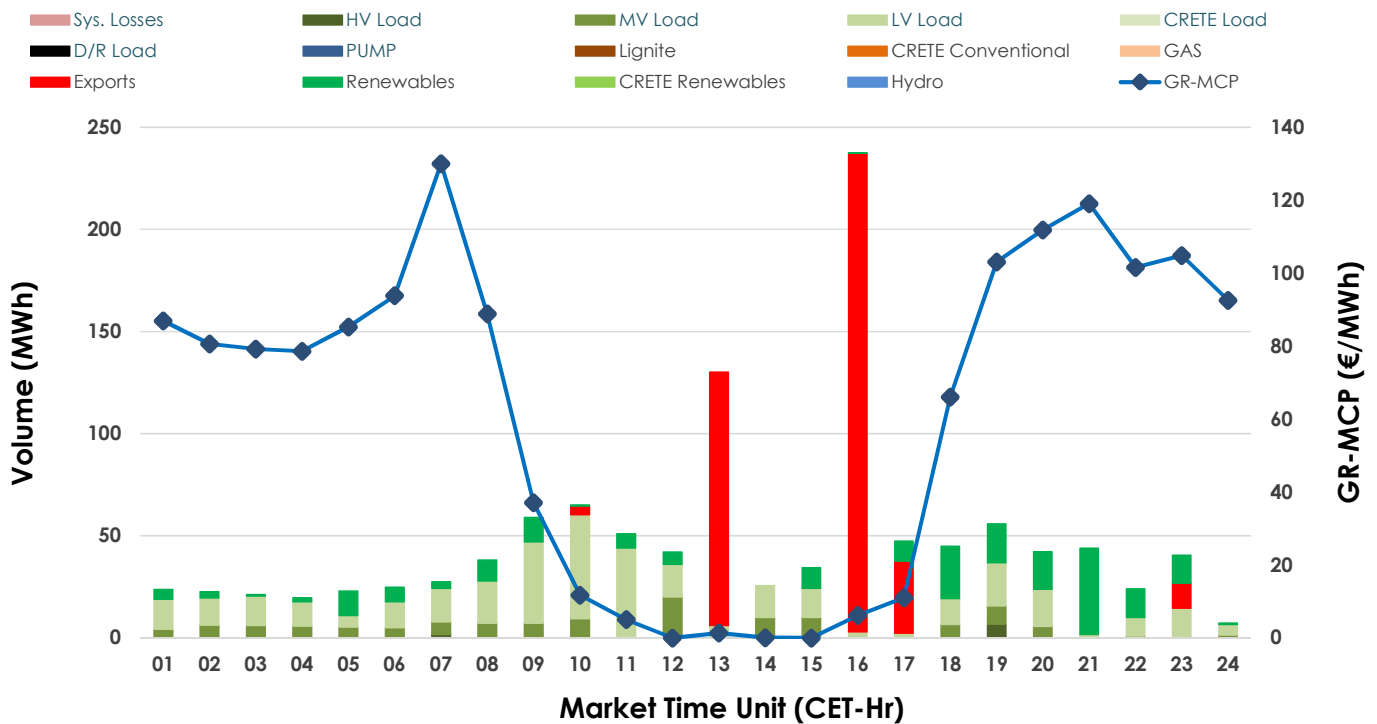


28.04.2025 IDA '2' Market - Sell



28.04.2025 IDA '2' Market - Buy



GR Bidding Zone Weekly Figures

Delivery Day	22.04	23.04	24.04	25.04	26.04	27.04	28.04
	↑44%	↓-7%	→-1%	↓-10%	↓-28%	↓-17%	↔21%
Avg.MCP (€/MWh)	105.33	97.74	96.82	86.86	62.37	51.59	62.29
Max.MCP (€/MWh)	268.70	214.47	155.33	123.45	117.37	109.86	130.00
Min.MCP (€/MWh)	32.90	14.65	71.98	42.82	0.61	0.20	0.01
	↔26%	↓-8%	↔19%	↔12%	↓-24%	↔7%	↔2%
Tot.Vol(GWh)	2.23	2.06	2.46	2.75	2.10	2.25	2.30

Trades by Order Type

Delivery Day	22.04	23.04	24.04	25.04	26.04	27.04	28.04
Order P.T	Sell & Buy Trades in (GWh) per Price Type						
PPT (S)							
HBD (S)	0.229	0.497	0.691	0.602	0.516	0.704	0.895
BLK (S)							
CPL (S)	0.886	0.533	0.537	0.775	0.533	0.420	0.255
PPT (B)							
HBD (B)	1.083	1.002	1.046	1.031	0.795	1.112	0.739
BLK (B)							
CPL (B)	0.032	0.029	0.181	0.346	0.254	0.012	0.410
Order P.T	Sell & Buy Orders Traded per Price Type						
PPT (S)							
HBD (S)	66	79	86	114	113	107	78
BLK (S)							
PPT (B)							
HBD (B)	171	156	198	130	99	140	149
BLK (B)							

MCP	Market Clearing Price (€/MWh)
PPT	Priority Price-Taking
HBD	Hybrid
BLK	Block
CPL	Market Coupling Flow

Trade's Volume Mix

	Sell - MWh	Buy - MWh	
Lignite	(0.0%) 0	0	(0.0%)
Crete Conv.	(0.0%) 0	0	(0.0%)
Gas	(3.5%) 40	0	(0.0%)
Hydro	(0.0%) 0	0	(0.0%)
Imports	(22.2%) 255		
RES	(59.4%) 683	221	(19.2%)
Crete RES	(0.0%) 0	0	(0.0%)
HV Load	(0.0%) 0	8	(0.7%)
MV Load	(13.2%) 152	126	(11.0%)
LV Load	(1.7%) 20	384	(33.4%)
Crete Load	(0.0%) 0	0	(0.0%)
Pumping	(0.1%) 1	0	(0.0%)
Exports		410	(35.7%)
Sys.Losses	(0.0%) 0	0	(0.0%)
D/R Load	(0.0%) 0	0	(0.0%)

