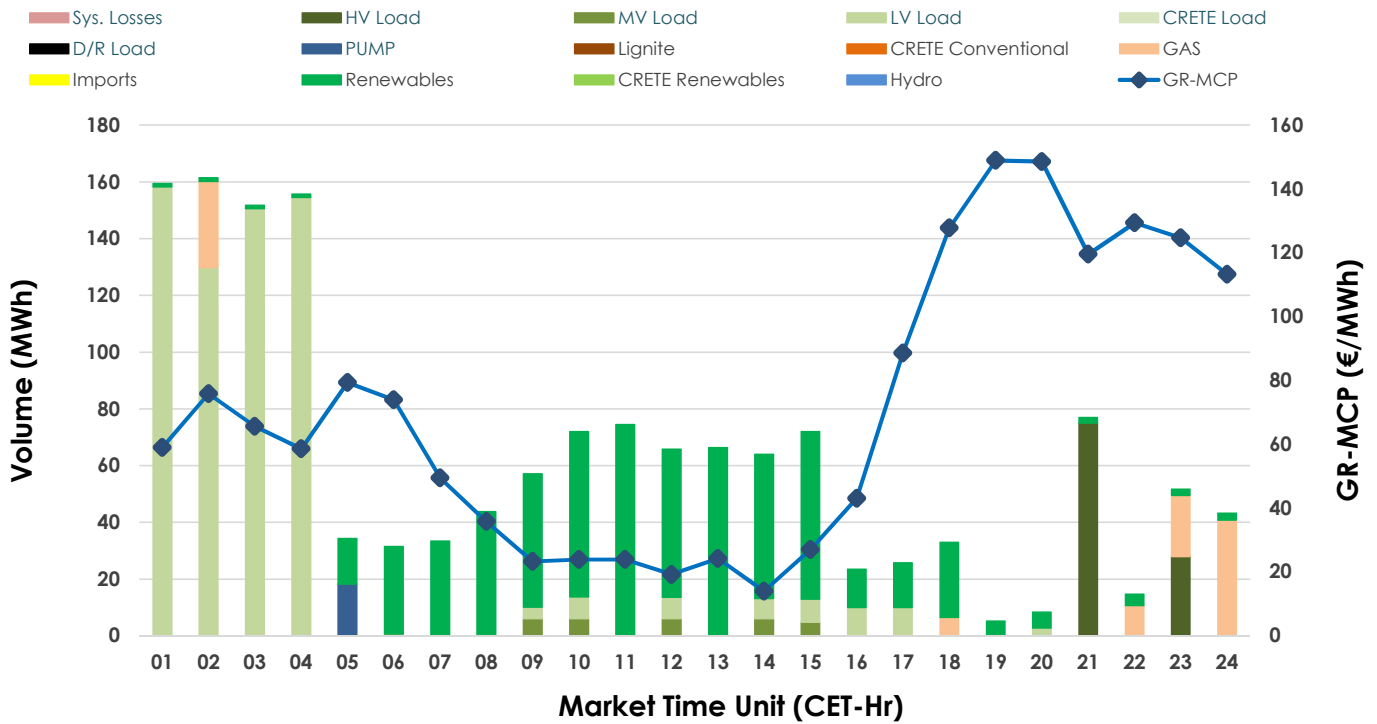
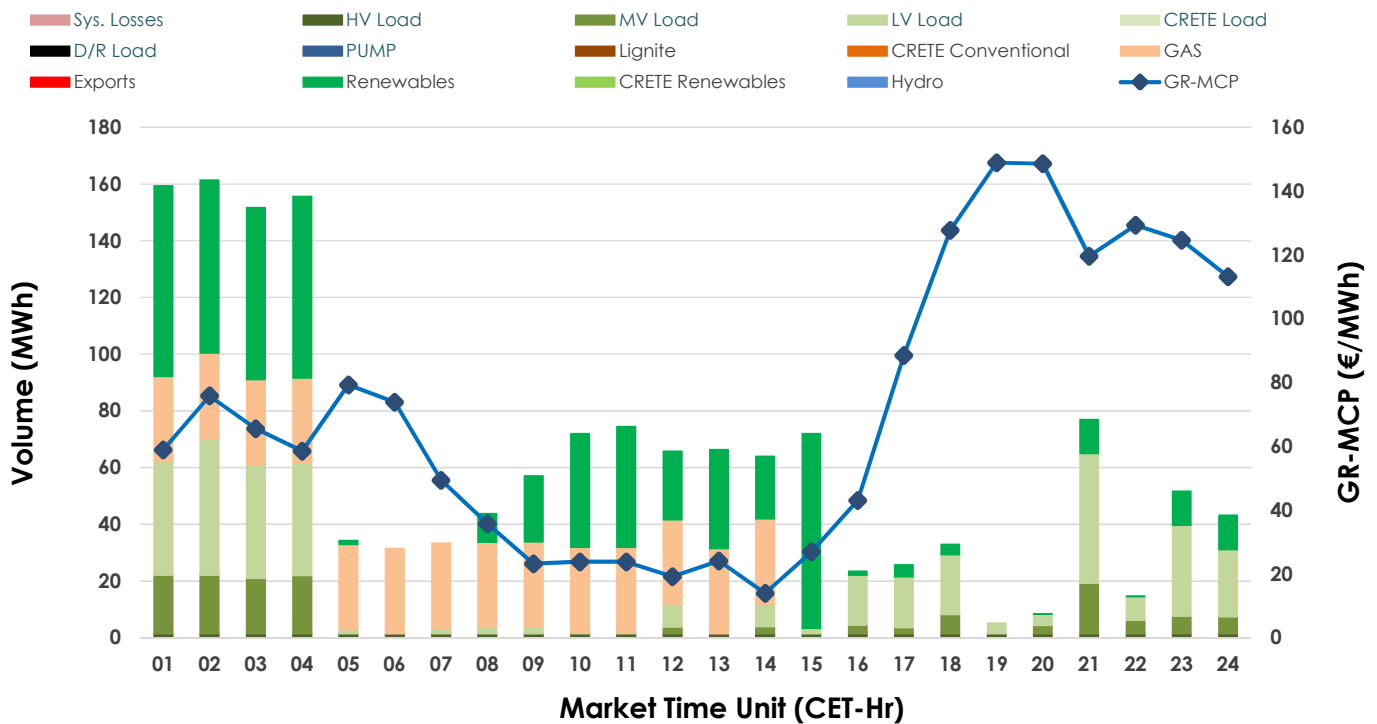


23.03.2025 IDA '1' Market - Sell



23.03.2025 IDA '1' Market - Buy



GR Bidding Zone Weekly Figures

Delivery Day	17.03	18.03	19.03	20.03	21.03	22.03	23.03
	↗21%	↗12%	↗2%	↗8%	↘-6%	↘-19%	↘-18%
Avg.MCP (€/MWh)	91.52	102.37	104.15	112.50	106.00	85.70	70.69
Max.MCP (€/MWh)	170.58	180.25	246.33	334.77	227.21	131.15	148.92
Min.MCP (€/MWh)	25.00	30.15	2.15	-0.48	1.20	13.03	13.98
	↑ 37%	↘ -1%	↑ 68%	↗ 12%	↘ -43%	↘ -14%	↑ 56%
Tot.Vol(GWh)	2.16	2.13	3.57	3.99	2.26	1.95	3.05

Trades by Order Type

Delivery Day	17.03	18.03	19.03	20.03	21.03	22.03	23.03
Order P.T	Sell & Buy Trades in (GWh) per Price Type						
PPT (S)							
HBD (S)	1.081	1.066	1.050	1.294	0.964	0.969	1.525
BLK (S)							
CPL (S)			0.736	0.702	0.168	0.008	
PPT (B)							
HBD (B)	1.081	1.066	1.567	1.909	1.011	0.916	1.525
BLK (B)							
CPL (B)			0.219	0.088	0.122	0.061	
Order P.T	Sell & Buy Orders Traded per Price Type						
PPT (S)							
HBD (S)	112	117	91	78	110	130	143
BLK (S)							
PPT (B)							
HBD (B)	236	216	304	307	231	234	212
BLK (B)							

MCP	Market Clearing Price (€/MWh)
PPT	Priority Price-Taking
HBD	Hybrid
BLK	Block
CPL	Market Coupling Flow

Trade's Volume Mix

	Sell - MWh	Buy - MWh	
Lignite	(0.0%) 0	0	(0.0%)
Crete Conv.	(0.0%) 0	0	(0.0%)
Gas	(7.2%) 110	420	(27.5%)
Hydro	(0.0%) 0	0	(0.0%)
Imports	(0.0%) 0		
RES	(40.2%) 613	565	(37.1%)
Crete RES	(0.0%) 0	0	(0.0%)
HV Load	(6.8%) 103	36	(2.4%)
MV Load	(1.9%) 29	135	(8.9%)
LV Load	(42.7%) 651	368	(24.2%)
Crete Load	(0.0%) 0	0	(0.0%)
Pumping	(1.2%) 18	0	(0.0%)
Exports		0	(0.0%)
Sys.Losses	(0.0%) 0	0	(0.0%)
D/R Load	(0.0%) 0	0	(0.0%)

