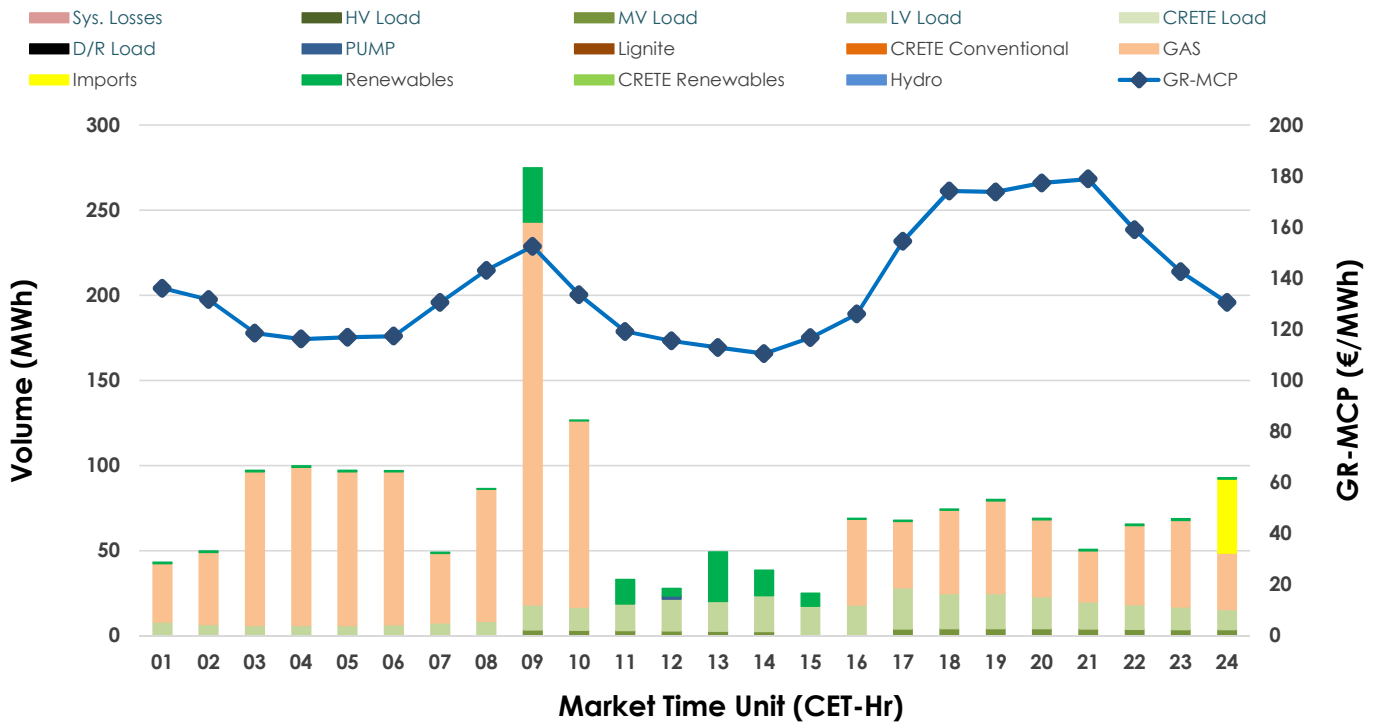
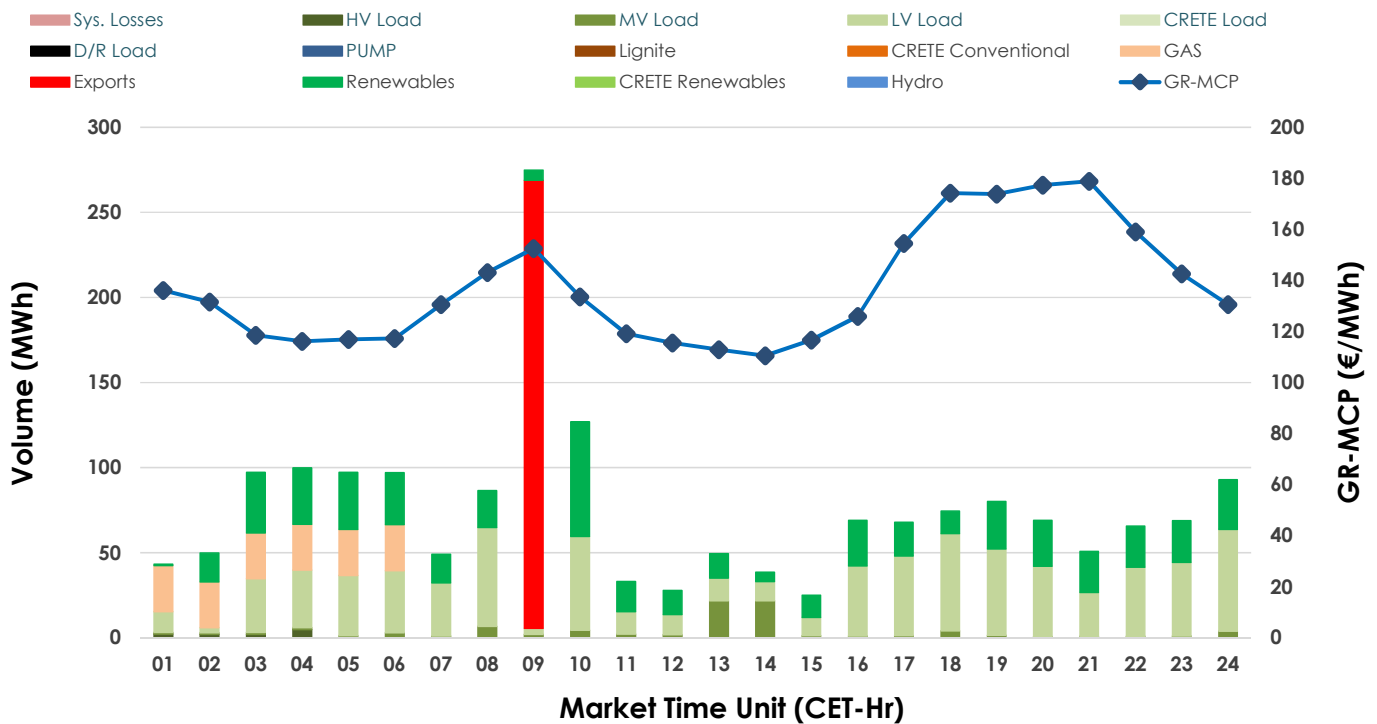


15.02.2025 IDA '1' Market - Sell



15.02.2025 IDA '1' Market - Buy



GR Bidding Zone Weekly Figures

Delivery Day	09.02	10.02	11.02	12.02	13.02	14.02	15.02
	↗ 12%	↗ 13%	↗ 10%	↗ 14%	↗ 14%	↘ -18%	↘ -18%
Avg.MCP (€/MWh)	126.26	142.88	157.32	179.93	204.36	167.27	137.00
Max.MCP (€/MWh)	178.72	206.43	241.83	371.76	359.78	309.85	178.86
Min.MCP (€/MWh)	58.30	107.35	105.05	125.09	121.09	121.20	110.51
	↗ 26%	↗ 23%	↗ 101%	↘ -59%	↗ 343%	↘ -71%	↗ 11%
Tot.Vol(GWh)	2.54	3.12	6.26	2.54	11.27	3.29	3.67

Trades by Order Type

Delivery Day	09.02	10.02	11.02	12.02	13.02	14.02	15.02
Order P.T	Sell & Buy Trades in (GWh) per Price Type						
PPT (S)							
HBD (S)	1.224	1.158	2.877	1.271	5.634	1.549	1.790
BLK (S)							
CPL (S)	0.048	0.403	0.255			0.097	0.043
PPT (B)							
HBD (B)	1.271	1.402	3.131	1.271	5.634	1.566	1.571
BLK (B)							
CPL (B)		0.160				0.080	0.263
Order P.T	Sell & Buy Orders Traded per Price Type						
PPT (S)							
HBD (S)	104	70	108	121	224	124	174
BLK (S)							
PPT (B)							
HBD (B)	172	224	309	305	244	317	269
BLK (B)							

MCP	Market Clearing Price (€/MWh)
PPT	Priority Price-Taking
HBD	Hybrid
BLK	Block
CPL	Market Coupling Flow

Trade's Volume Mix

	Sell - MWh	Buy - MWh	
Lignite	(0.0%) 0	0	(0.0%)
Crete Conv.	(0.0%) 0	0	(0.0%)
Gas	(70.5%) 1,292	162	(8.8%)
Hydro	(0.0%) 0	0	(0.0%)
Imports	(2.4%) 43		
RES	(6.2%) 114	542	(29.6%)
Crete RES	(0.0%) 0	0	(0.0%)
HV Load	(0.0%) 0	11	(0.6%)
MV Load	(2.6%) 49	87	(4.7%)
LV Load	(18.2%) 334	768	(41.9%)
Crete Load	(0.0%) 0	0	(0.0%)
Pumping	(0.1%) 2	0	(0.0%)
Exports		263	(14.4%)
Sys.Losses	(0.0%) 0	0	(0.0%)
D/R Load	(0.0%) 0	0	(0.0%)

