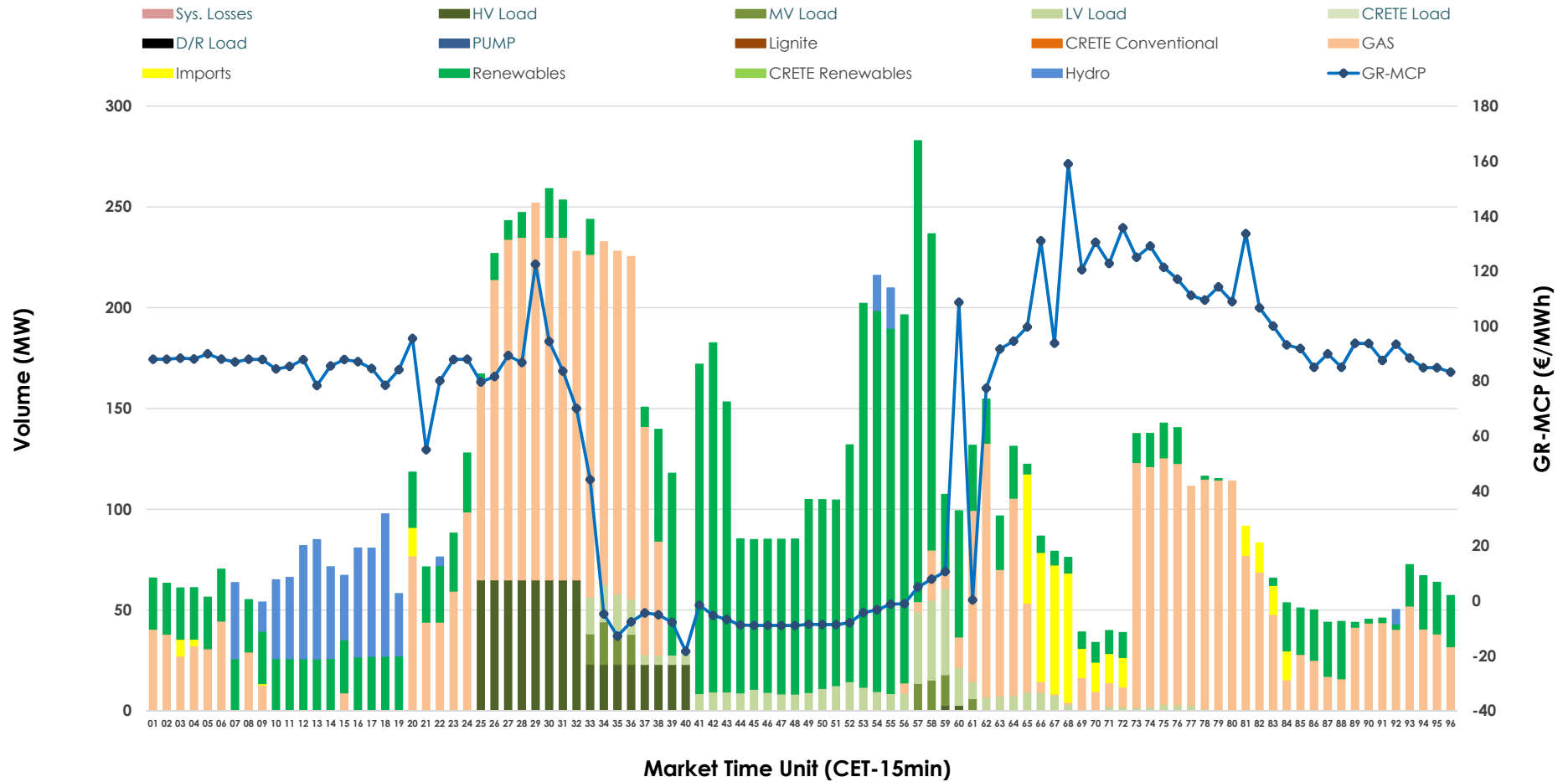


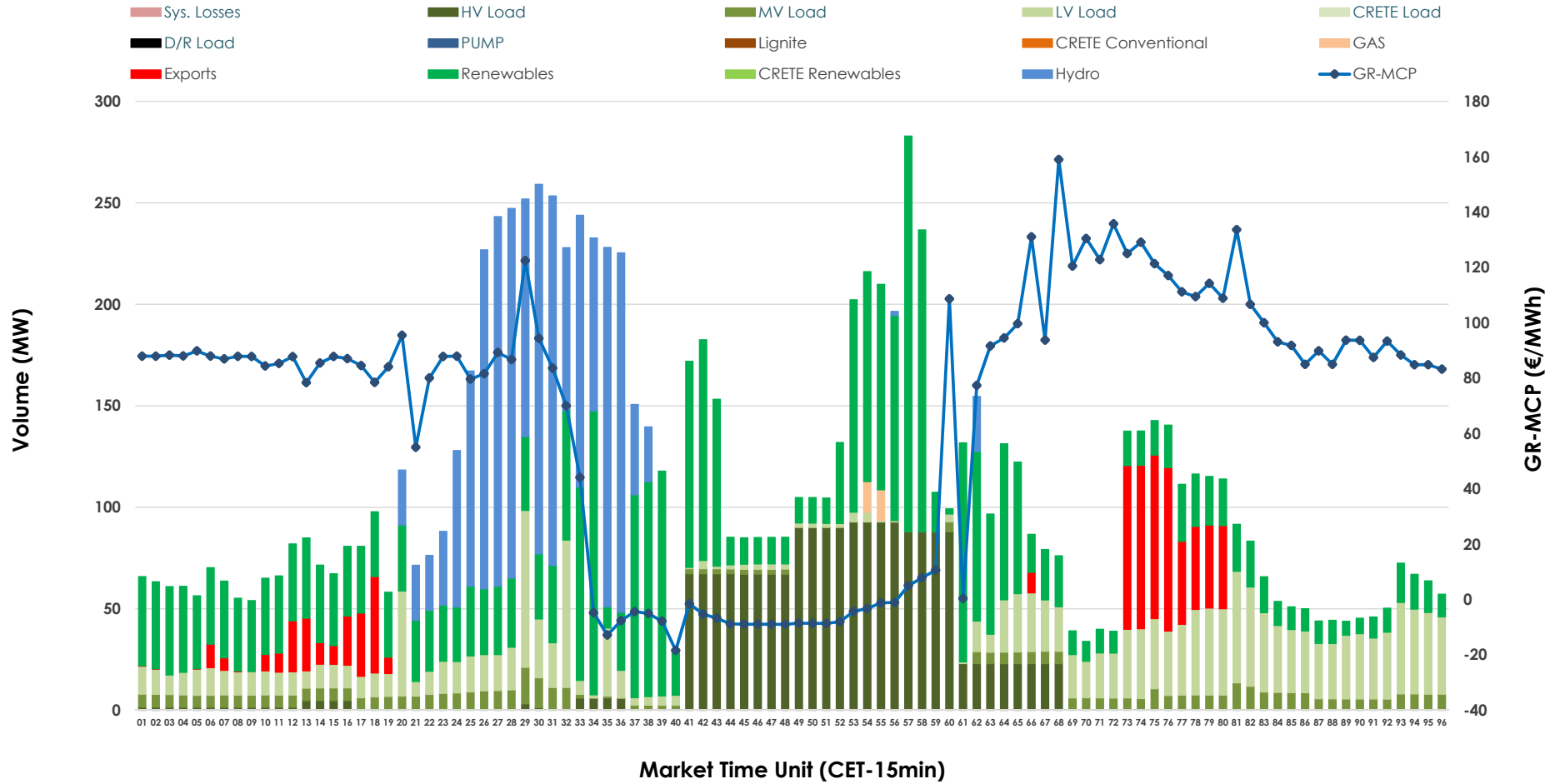


IDA '1' Market Outlook

16.02.2026 IDA '1' Market - Sell



16.02.2026 IDA '1' Market - Buy



GR Bidding Zone Weekly Figures

Delivery Day	10.02	11.02	12.02	13.02	14.02	15.02	16.02
	👇 -15%	👇 -13%	👇 -17%	👆 11%	👇 -27%	👇 -60%	👆 155%
Avg.MCP (€/MWh)	112.38	98.03	81.52	90.59	65.92	26.32	67.20
Max.MCP (€/MWh)	182.80	138.82	110.84	145.19	117.14	95.58	158.98
Min.MCP (€/MWh)	75.33	35.30	-4.17	3.01	-3.80	-5.00	-18.37
	👇 -3%	👇 -4%	👇 -44%	👆 28%	👆 121%	👇 -43%	👆 40%
Tot.Vol(GWh)	4.51	4.34	2.41	3.08	6.81	3.90	5.47

Trades by Order Type

Delivery Day		10.02	11.02	12.02	13.02	14.02	15.02	16.02	
Ord Price Type		Sell & Buy Trades in (GWh) per Price Type							(%)
PPT	(S)	0.000	0.000	0.000	0.000	0.000	0.000	0.000	0.00%
HBD	(S)	2.203	2.101	1.156	1.287	3.373	1.951	2.634	96.36%
BLK	(S)	0.000	0.000	0.000	0.000	0.000	0.000	0.000	0.00%
CPL	(S)	0.054	0.068	0.049	0.251	0.030	0.000	0.100	3.64%
PPT	(B)	0.000	0.000	0.000	0.000	0.000	0.000	0.000	0.00%
HBD	(B)	1.461	0.907	1.095	1.246	2.776	1.797	2.555	93.47%
BLK	(B)	0.000	0.000	0.000	0.000	0.000	0.000	0.000	0.00%
CPL	(B)	0.795	1.262	0.109	0.292	0.627	0.155	0.178	6.53%
		Sell & Buy Orders Traded per Price Type							(%)
PPT	(S)	0	0	0	0	0	0	0	0.00%
HBD	(S)	187	313	135	183	346	337	110	100.00%
BLK	(S)	0	0	0	0	0	0	0	0.00%
PPT	(B)	0	0	0	0	0	0	0	0.00%
HBD	(B)	716	644	666	706	576	420	786	100.00%
BLK	(B)	0	0	0	0	0	0	0	0.00%

- MCP** Market Clearing Price (€/MWh)
- PPT** Priority Price-Taking
- HBD** Hybrid
- BLK** Block
- CPL** Market Coupling Flow

Trade's Volume Mix

		Sell - MWh	Buy - MWh	
Lignite	(0.0%)	0	0	(0.0%)
Crete Conv.	(0.0%)	0	0	(0.0%)
Gas	(44.0%)	1,201	8	(0.3%)
Hydro	(5.3%)	146	516	(18.9%)
Imports	(3.6%)	100		
RES	(35.2%)	963	971	(35.5%)
Crete RES	(0.0%)	0	0	(0.0%)
HV Load	(6.5%)	177	468	(17.1%)
MV Load	(1.1%)	29	134	(4.9%)
LV Load	(4.3%)	117	458	(16.8%)
Crete Load	(0.0%)	0	0	(0.0%)
Pumping	(0.0%)	0	0	(0.0%)
Exports			178	(6.5%)
Sys.Losses	(0.0%)	0	0	(0.0%)
D/R Load	(0.0%)	0	0	(0.0%)

