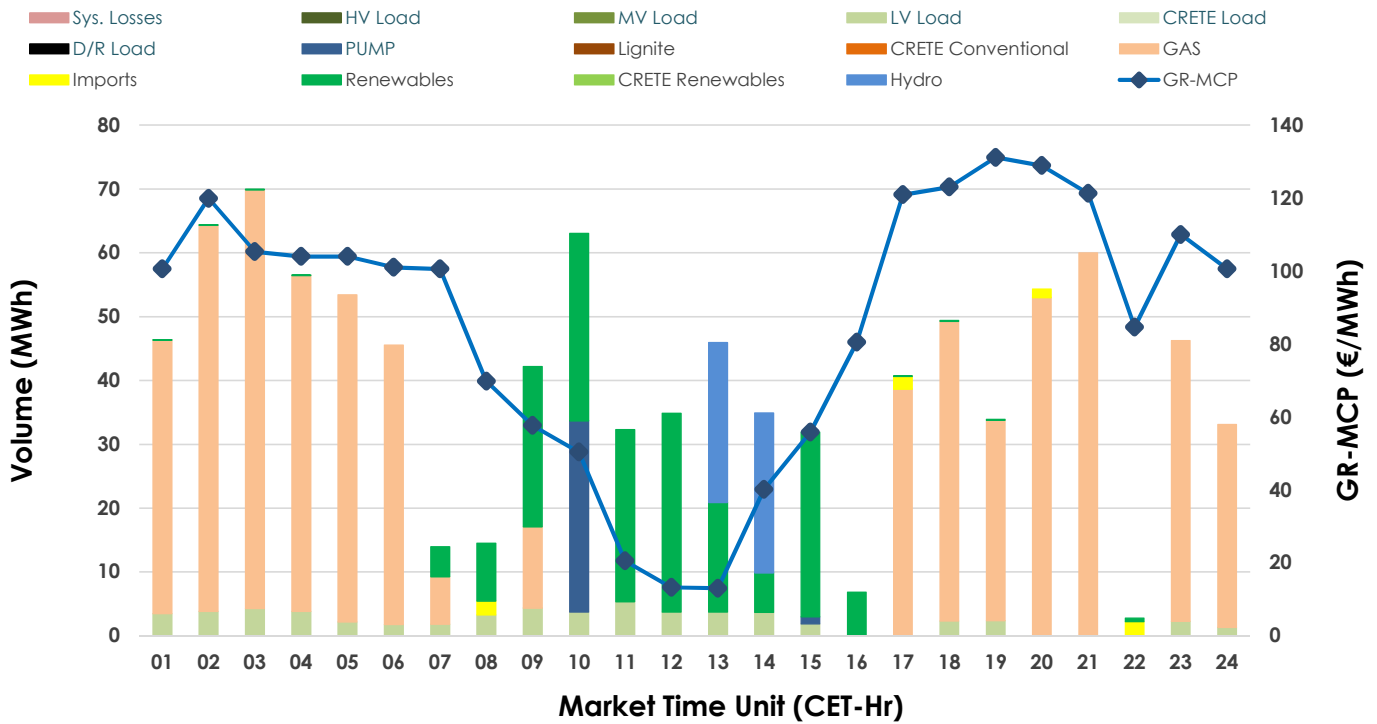
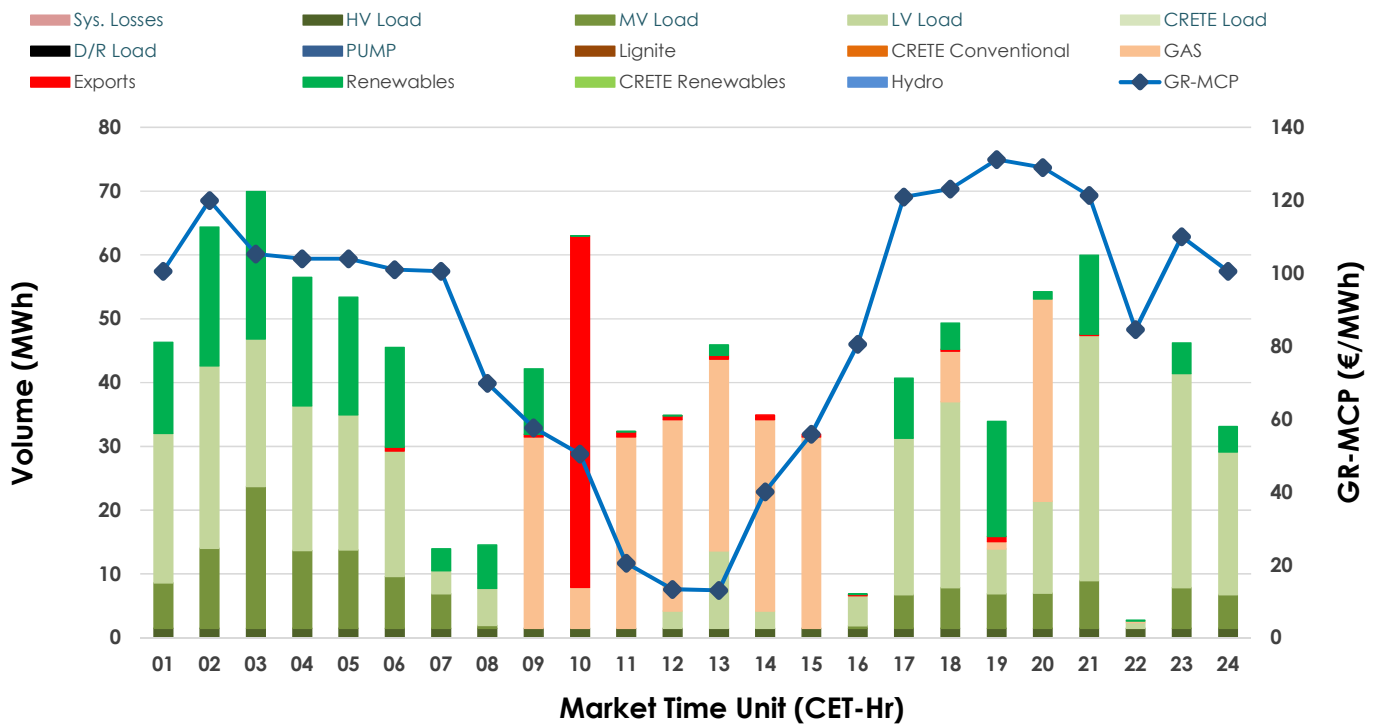


## 22.03.2025 IDA '1' Market - Sell



## 22.03.2025 IDA '1' Market - Buy



## GR Bidding Zone Weekly Figures

Delivery Day	16.03	17.03	18.03	19.03	20.03	21.03	22.03
	⬇️-6%	⬆️21%	⬆️12%	⬆️2%	⬆️8%	⬇️-6%	⬇️-19%
Avg.MCP (€/MWh)	75.40	91.52	102.37	104.15	112.50	106.00	85.70
Max.MCP (€/MWh)	156.26	170.58	180.25	246.33	334.77	227.21	131.15
Min.MCP (€/MWh)	4.95	25.00	30.15	2.15	-0.48	1.20	13.03
	⬇️-35%	⬆️37%	⬆️-1%	⬆️68%	⬆️12%	⬇️-43%	⬆️-14%
Tot.Vol(GWh)	1.58	2.16	2.13	3.57	3.99	2.26	1.95

## Trades by Order Type

Delivery Day	16.03	17.03	18.03	19.03	20.03	21.03	22.03
Order P.T	Sell & Buy Trades in (GWh) per Price Type						
PPT (S)							
HBD (S)	0.788	1.081	1.066	1.050	1.294	0.964	0.969
BLK (S)							
CPL (S)				0.736	0.702	0.168	0.008
PPT (B)							
HBD (B)	0.788	1.081	1.066	1.567	1.909	1.011	0.916
BLK (B)							
CPL (B)				0.219	0.088	0.122	0.061
Order P.T	Sell & Buy Orders Traded per Price Type						
PPT (S)							
HBD (S)	88	112	117	91	78	110	130
BLK (S)							
PPT (B)							
HBD (B)	141	236	216	304	307	231	234
BLK (B)							

<b>MCP</b>	Market Clearing Price (€/MWh)
<b>PPT</b>	Priority Price-Taking
<b>HBD</b>	Hybrid
<b>BLK</b>	Block
<b>CPL</b>	Market Coupling Flow

## Trade's Volume Mix

	Sell - MWh	Buy - MWh	
Lignite	(0.0%) 0	0	(0.0%)
Crete Conv.	(0.0%) 0	0	(0.0%)
Gas	(65.8%) 643	227	(23.3%)
Hydro	(5.1%) 50	0	(0.0%)
Imports	(0.8%) 8		
RES	(19.1%) 186	190	(19.4%)
Crete RES	(0.0%) 0	0	(0.0%)
HV Load	(0.0%) 0	36	(3.7%)
MV Load	(0.0%) 0	122	(12.5%)
LV Load	(6.0%) 59	341	(34.9%)
Crete Load	(0.0%) 0	0	(0.0%)
Pumping	(3.2%) 31	0	(0.0%)
Exports		61	(6.2%)
Sys.Losses	(0.0%) 0	0	(0.0%)
D/R Load	(0.0%) 0	0	(0.0%)

