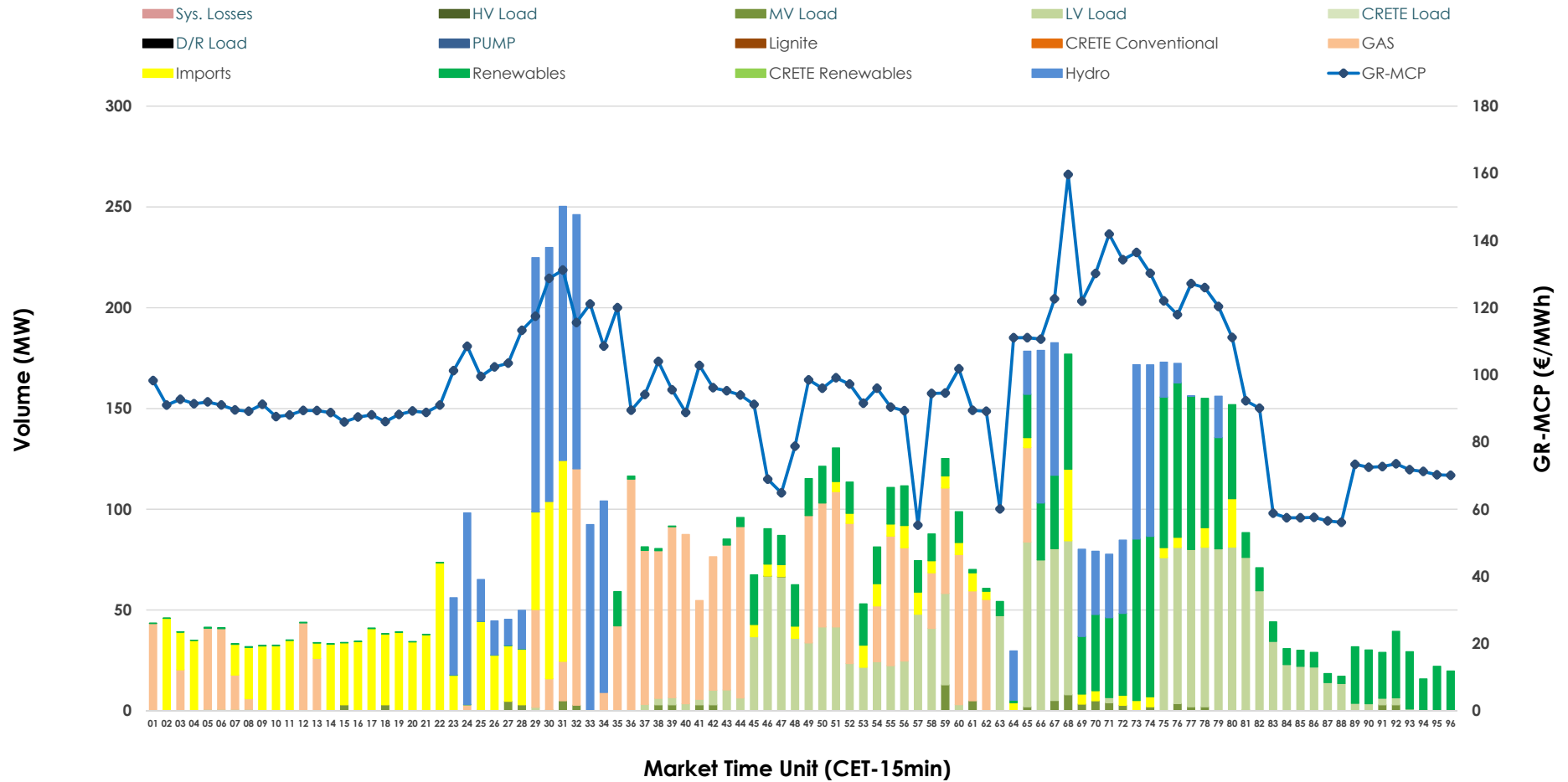


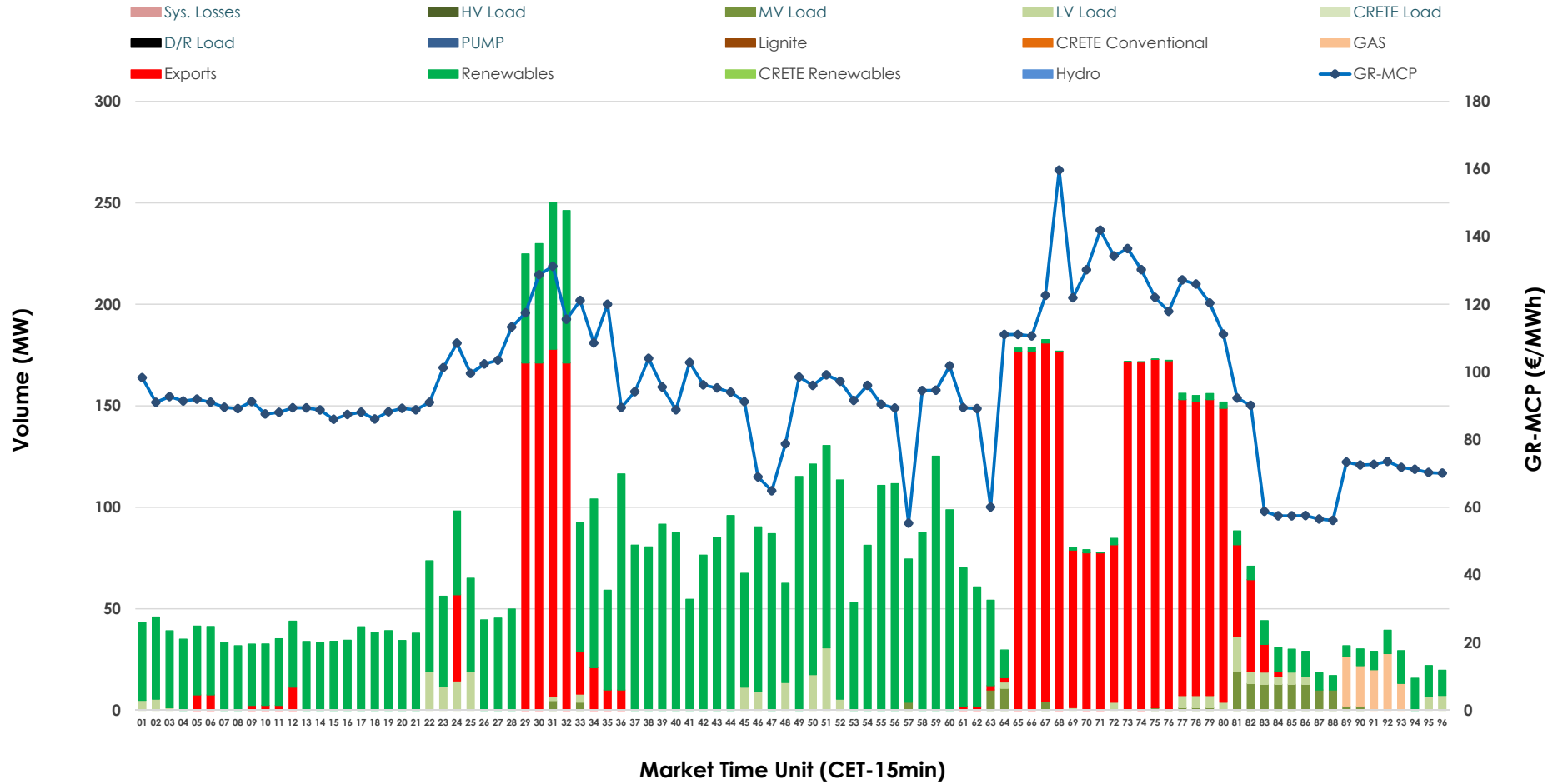


# IDA '2' Market Outlook

11.02.2026 IDA '2' Market - Sell



### 11.02.2026 IDA '2' Market - Buy



### GR Bidding Zone Weekly Figures

Delivery Day	05.02	06.02	07.02	08.02	09.02	10.02	11.02
	↗ 3%	→ 0%	↘ -17%	↗ 18%	↗ 43%	↘ -14%	↘ -15%
<b>Avg.MCP (€/MWh)</b>	93.97	94.02	78.28	92.03	131.37	112.78	95.73
<b>Max.MCP (€/MWh)</b>	160.61	138.97	147.50	136.14	217.55	184.09	159.65
<b>Min.MCP (€/MWh)</b>	47.50	36.39	-2.23	8.64	91.39	85.49	55.29
	↗ 56%	↘ -28%	↗ 226%	↘ -27%	↘ -30%	↗ 30%	↘ -14%
<b>Tot.Vol(GWh)</b>	2.91	2.08	6.80	4.96	3.49	4.54	3.91

### Trades by Order Type

Delivery Day		05.02	06.02	07.02	08.02	09.02	10.02	11.02	
<b>Ord Price Type</b>		<b>Sell &amp; Buy Trades in (GWh) per Price Type</b>							<b>(%)</b>
<b>PPT</b>	(S)	0.000	0.000	0.000	0.000	0.000	0.000	0.000	0.00%
<b>HBD</b>	(S)	1.006	0.971	2.916	2.161	1.173	2.028	1.654	84.49%
<b>BLK</b>	(S)	0.000	0.000	0.000	0.000	0.000	0.000	0.000	0.00%
<b>CPL</b>	(S)	0.450	0.071	0.481	0.320	0.572	0.240	0.304	15.51%
<b>PPT</b>	(B)	0.000	0.000	0.000	0.000	0.000	0.000	0.000	0.00%
<b>HBD</b>	(B)	1.001	0.995	3.052	2.212	1.435	1.857	1.152	58.84%
<b>BLK</b>	(B)	0.000	0.000	0.000	0.000	0.000	0.000	0.000	0.00%
<b>CPL</b>	(B)	0.456	0.046	0.346	0.269	0.311	0.411	0.806	41.16%
		<b>Sell &amp; Buy Orders Traded per Price Type</b>							<b>(%)</b>
<b>PPT</b>	(S)	0	0	0	0	0	0	0	0.00%
<b>HBD</b>	(S)	422	218	338	210	274	173	264	100.00%
<b>BLK</b>	(S)	0	0	0	0	0	0	0	0.00%
<b>PPT</b>	(B)	0	0	0	0	0	0	0	0.00%
<b>HBD</b>	(B)	348	487	389	477	493	477	470	100.00%
<b>BLK</b>	(B)	0	0	0	0	0	0	0	0.00%

**MCP** Market Clearing Price (€/MWh)  
**PPT** Priority Price-Taking  
**HBD** Hybrid  
**BLK** Block  
**CPL** Market Coupling Flow

### Trade's Volume Mix

	Sell - MWh	Buy - MWh	
<b>Lignite</b> (0.0%)	0	0	(0.0%)
<b>Crete Conv.</b> (0.0%)	0	0	(0.0%)
<b>Gas</b> (24.5%)	479	26	(1.4%)
<b>Hydro</b> (18.4%)	361	0	(0.0%)
<b>Imports</b> (15.5%)	304		
<b>RES</b> (18.2%)	356	1,023	(52.3%)
<b>Crete RES</b> (0.0%)	0	0	(0.0%)
<b>HV Load</b> (0.0%)	0	0	(0.0%)
<b>MV Load</b> (1.3%)	25	38	(1.9%)
<b>LV Load</b> (22.1%)	433	65	(3.3%)
<b>Crete Load</b> (0.0%)	0	0	(0.0%)
<b>Pumping</b> (0.0%)	0	0	(0.0%)
<b>Exports</b>		806	(41.2%)
<b>Sys.Losses</b> (0.0%)	0	0	(0.0%)
<b>D/R Load</b> (0.0%)	0	0	(0.0%)

