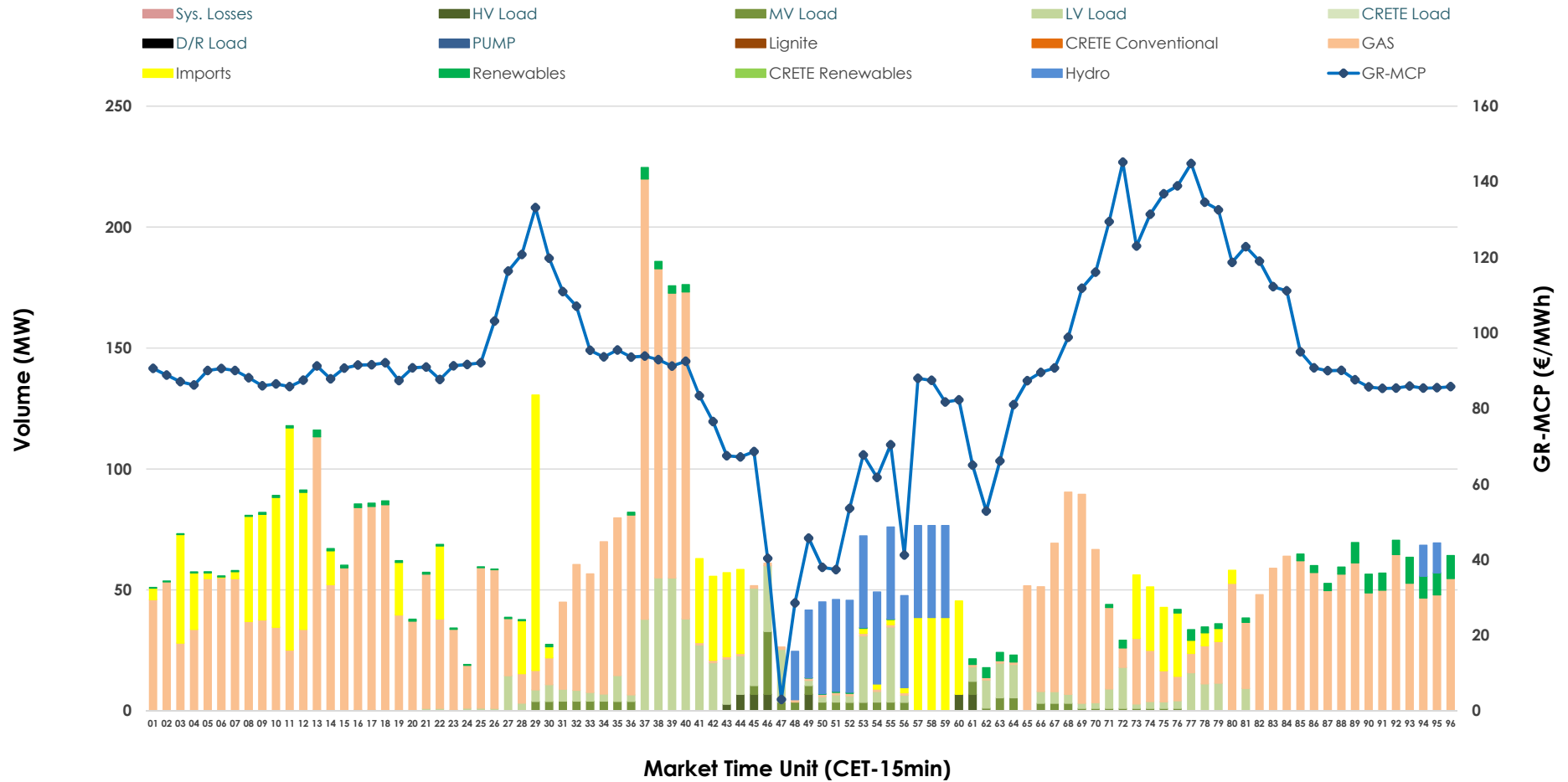


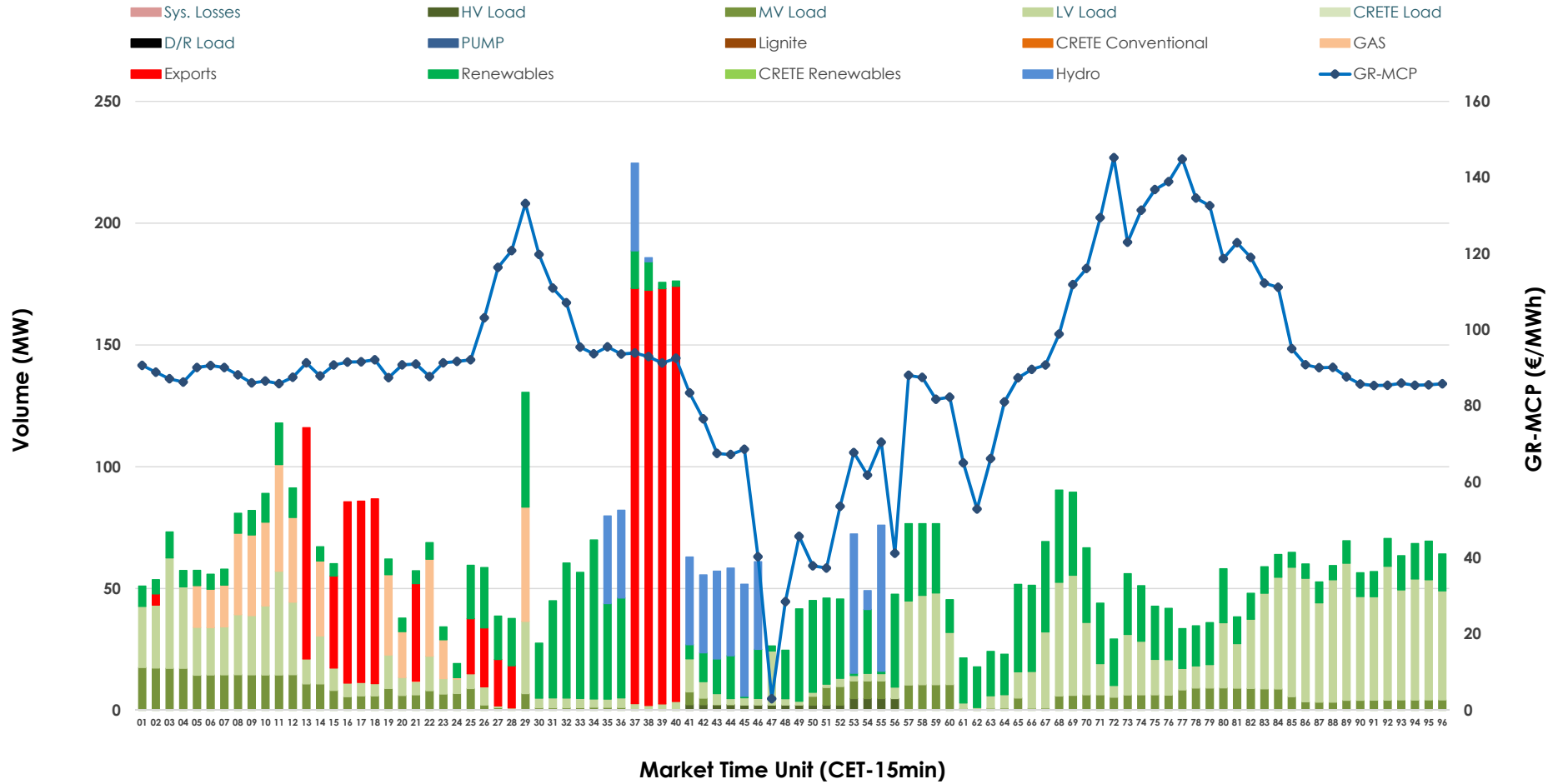


# IDA '1' Market Outlook

13.02.2026 IDA '1' Market - Sell



### 13.02.2026 IDA '1' Market - Buy



### GR Bidding Zone Weekly Figures

Delivery Day	07.02	08.02	09.02	10.02	11.02	12.02	13.02
	👇 -23%	👆 19%	👆 53%	👇 -15%	👇 -13%	👇 -17%	👆 11%
<b>Avg.MCP (€/MWh)</b>	72.71	86.21	131.86	112.38	98.03	81.52	90.59
<b>Max.MCP (€/MWh)</b>	136.60	154.78	216.66	182.80	138.82	110.84	145.19
<b>Min.MCP (€/MWh)</b>	-2.50	-3.80	93.93	75.33	35.30	-4.17	3.01
	👆 145%	👇 -57%	👆 41%	👇 -3%	👇 -4%	👇 -44%	👆 28%
<b>Tot.Vol(GWh)</b>	7.57	3.29	4.64	4.51	4.34	2.41	3.08

### Trades by Order Type

Delivery Day		07.02	08.02	09.02	10.02	11.02	12.02	13.02	
<b>Ord Price Type</b>		<b>Sell &amp; Buy Trades in (GWh) per Price Type</b>							<b>(%)</b>
<b>PPT</b>	(S)	0.000	0.000	0.000	0.000	0.000	0.000	0.000	0.00%
<b>HBD</b>	(S)	3.734	1.288	1.277	2.203	2.101	1.156	1.287	83.70%
<b>BLK</b>	(S)	0.000	0.000	0.000	0.000	0.000	0.000	0.000	0.00%
<b>CPL</b>	(S)	0.049	0.356	1.044	0.054	0.068	0.049	0.251	16.30%
<b>PPT</b>	(B)	0.000	0.000	0.000	0.000	0.000	0.000	0.000	0.00%
<b>HBD</b>	(B)	3.783	1.026	1.688	1.461	0.907	1.095	1.246	81.02%
<b>BLK</b>	(B)	0.000	0.000	0.000	0.000	0.000	0.000	0.000	0.00%
<b>CPL</b>	(B)	0.000	0.618	0.633	0.795	1.262	0.109	0.292	18.98%
		<b>Sell &amp; Buy Orders Traded per Price Type</b>							<b>(%)</b>
<b>PPT</b>	(S)	0	0	0	0	0	0	0	0.00%
<b>HBD</b>	(S)	196	104	224	187	313	135	183	100.00%
<b>BLK</b>	(S)	0	0	0	0	0	0	0	0.00%
<b>PPT</b>	(B)	0	0	0	0	0	0	0	0.00%
<b>HBD</b>	(B)	453	584	577	716	644	666	706	100.00%
<b>BLK</b>	(B)	0	0	0	0	0	0	0	0.00%

- MCP** Market Clearing Price (€/MWh)
- PPT** Priority Price-Taking
- HBD** Hybrid
- BLK** Block
- CPL** Market Coupling Flow

### Trade's Volume Mix

	Sell - MWh	Buy - MWh	
<b>Lignite</b> (0.0%)	0	0	(0.0%)
<b>Crete Conv.</b> (0.0%)	0	0	(0.0%)
<b>Gas</b> (60.6%)	932	104	(6.8%)
<b>Hydro</b> (7.4%)	113	114	(7.4%)
<b>Imports</b> (16.3%)	251		
<b>RES</b> (2.4%)	36	423	(27.5%)
<b>Crete RES</b> (0.0%)	0	0	(0.0%)
<b>HV Load</b> (0.7%)	11	11	(0.7%)
<b>MV Load</b> (2.1%)	33	144	(9.4%)
<b>LV Load</b> (10.5%)	162	449	(29.2%)
<b>Crete Load</b> (0.0%)	0	0	(0.0%)
<b>Pumping</b> (0.0%)	0	0	(0.0%)
<b>Exports</b>		292	(19.0%)
<b>Sys.Losses</b> (0.0%)	0	0	(0.0%)
<b>D/R Load</b> (0.0%)	0	0	(0.0%)

