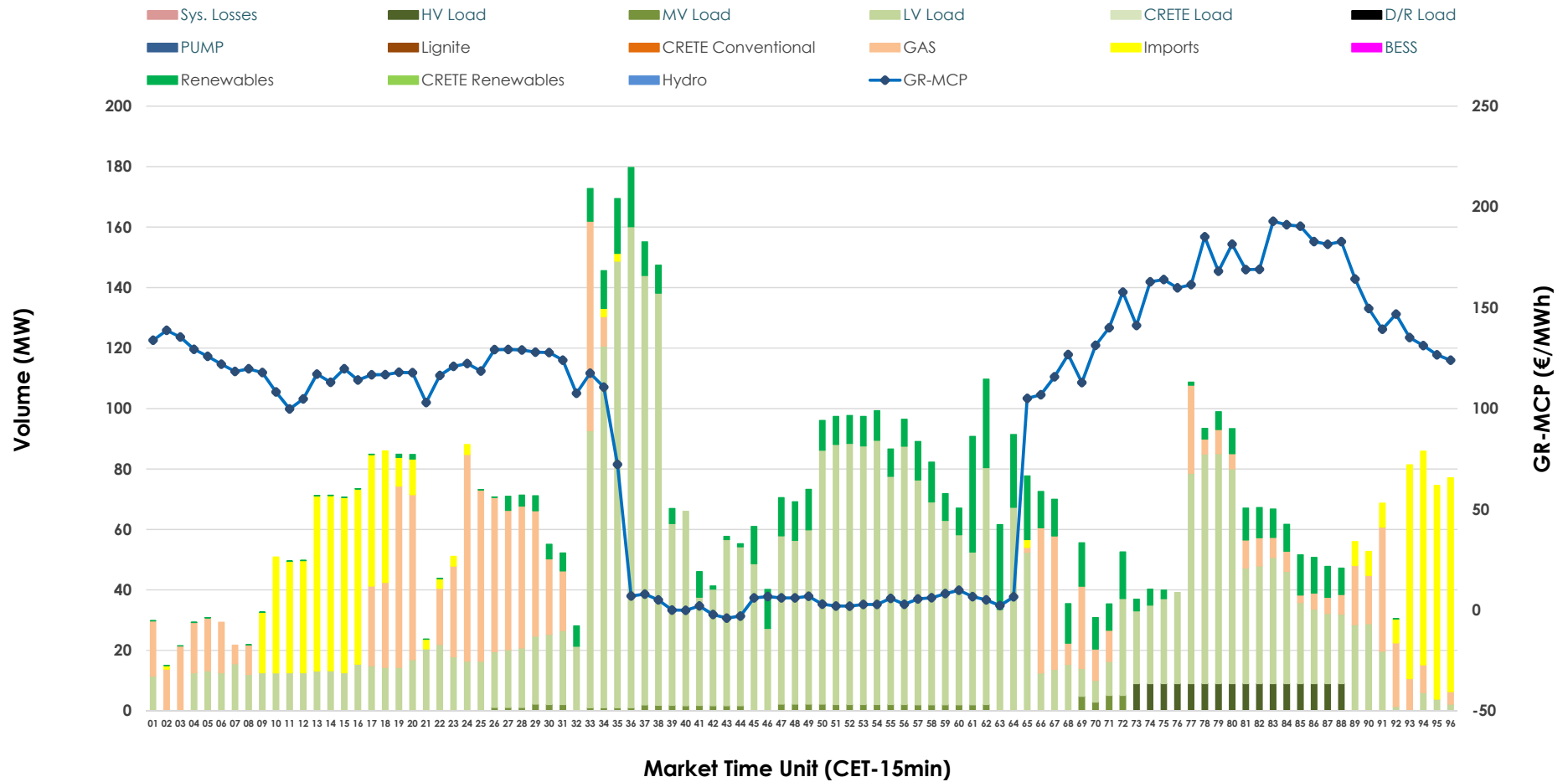


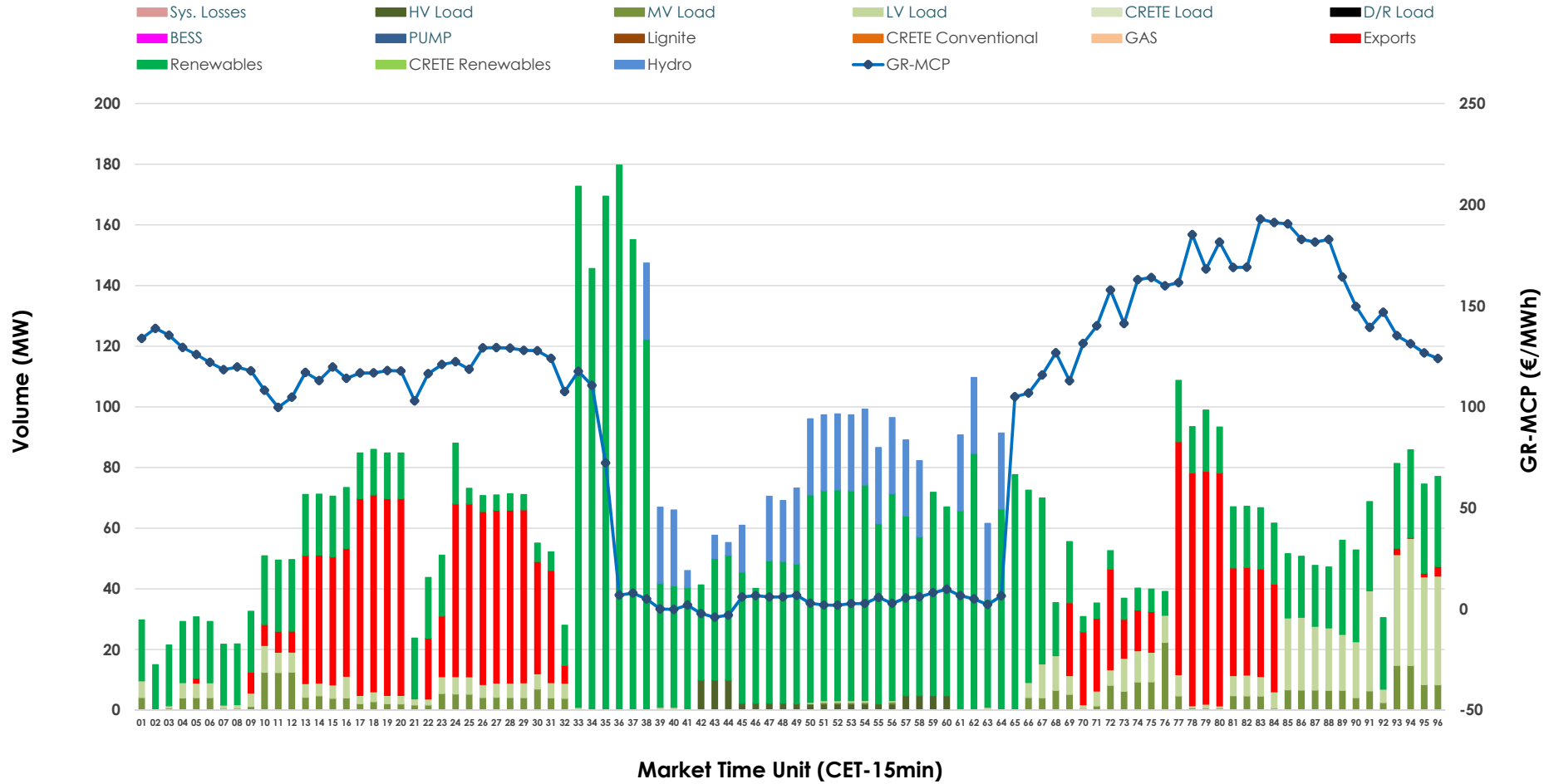


# IDA '1' Market Outlook

10.04.2026 IDA '1' Market - Sell



### 10.04.2026 IDA '1' Market - Buy



### GR Bidding Zone Weekly Figures

Delivery Day	04.04	05.04	06.04	07.04	08.04	09.04	10.04
	↓ -46%	↓ -56%	↑ 116%	↔ 24%	↓ -7%	↔ 20%	↔ 3%
<b>Avg.MCP (€/MWh)</b>	69.11	30.63	66.14	82.25	76.84	92.32	95.36
<b>Max.MCP (€/MWh)</b>	185.47	138.01	183.21	201.50	189.41	192.88	192.88
<b>Min.MCP (€/MWh)</b>	-7.10	-50.00	-34.93	-19.78	-17.84	-10.96	-4.00
	↘ -8%	↗ 20%	↘ -33%	↗ -1%	↘ -1%	↗ 12%	↘ -20%
<b>Tot.Vol(GWh)</b>	4.69	5.62	3.78	3.75	3.70	4.14	3.31

### Trades by Order Type

Delivery Day		04.04	05.04	06.04	07.04	08.04	09.04	10.04	
<b>Ord Price Type</b>		<b>Sell &amp; Buy Trades in (GWh) per Price Type</b>							<b>(%)</b>
<b>PPT</b>	(S)	0.000	0.000	0.000	0.000	0.000	0.000	0.000	0.00%
<b>HBD</b>	(S)	1.713	0.741	0.730	1.032	1.045	0.954	1.454	87.79%
<b>BLK</b>	(S)	0.000	0.000	0.000	0.000	0.000	0.000	0.000	0.00%
<b>CPL</b>	(S)	0.629	2.069	1.158	0.844	0.804	1.116	0.202	12.21%
<b>PPT</b>	(B)	0.000	0.000	0.000	0.000	0.000	0.000	0.000	0.00%
<b>HBD</b>	(B)	1.153	2.734	1.496	1.451	1.672	1.754	1.276	77.06%
<b>BLK</b>	(B)	0.000	0.000	0.000	0.000	0.000	0.000	0.000	0.00%
<b>CPL</b>	(B)	1.190	0.077	0.392	0.424	0.177	0.316	0.380	22.94%
		<b>Sell &amp; Buy Orders Traded per Price Type</b>							<b>(%)</b>
<b>PPT</b>	(S)	0	0	0	0	0	0	0	0.00%
<b>HBD</b>	(S)	412	120	164	122	247	208	358	100.00%
<b>BLK</b>	(S)	0	0	0	0	0	0	0	0.00%
<b>PPT</b>	(B)	0	0	0	0	0	0	0	0.00%
<b>HBD</b>	(B)	788	412	449	865	778	840	502	100.00%
<b>BLK</b>	(B)	0	0	0	0	0	0	0	0.00%

- MCP** Market Clearing Price (€/MWh)
- PPT** Priority Price-Taking
- HBD** Hybrid
- BLK** Block
- CPL** Market Coupling Flow

### Trade's Volume Mix

		Sell - MWh	Buy - MWh	
<b>Lignite</b>	(0.0%)	0	0	(0.0%)
<b>Crete Conv.</b>	(0.0%)	0	0	(0.0%)
<b>Gas</b>	(17.2%)	285	0	(0.0%)
<b>Hydro</b>	(0.0%)	0	125	(7.5%)
<b>Imports</b>	(12.2%)	202		
<b>RES</b>	(9.7%)	161	906	(54.7%)
<b>Crete RES</b>	(0.0%)	0	0	(0.0%)
<b>BESS</b>	(0.0%)	0	0	(0.0%)
<b>HV Load</b>	(2.2%)	36	19	(1.1%)
<b>MV Load</b>	(1.2%)	20	83	(5.0%)
<b>LV Load</b>	(57.5%)	952	144	(8.7%)
<b>Crete Load</b>	(0.0%)	0	0	(0.0%)
<b>Pumping</b>	(0.0%)	0	0	(0.0%)
<b>Exports</b>			380	(22.9%)
<b>Sys.Losses</b>	(0.0%)	0	0	(0.0%)
<b>D/R Load</b>	(0.0%)	0	0	(0.0%)

