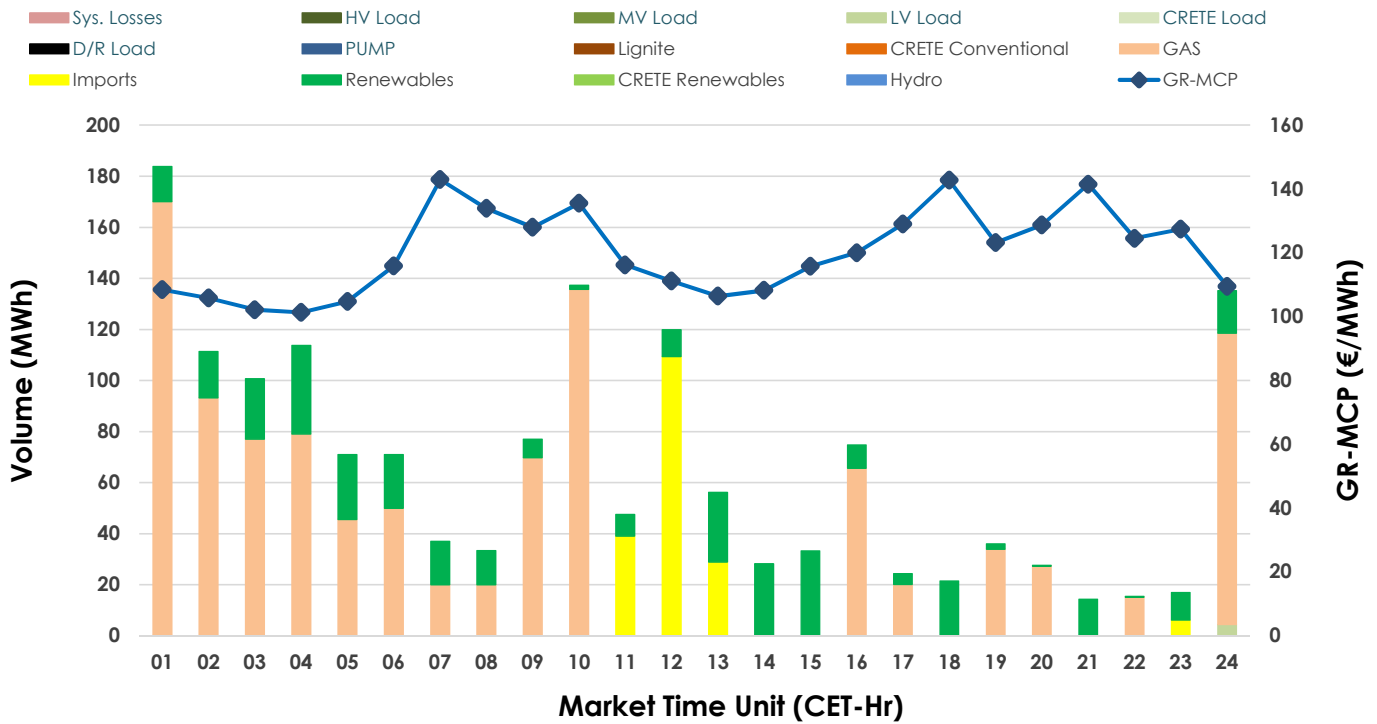
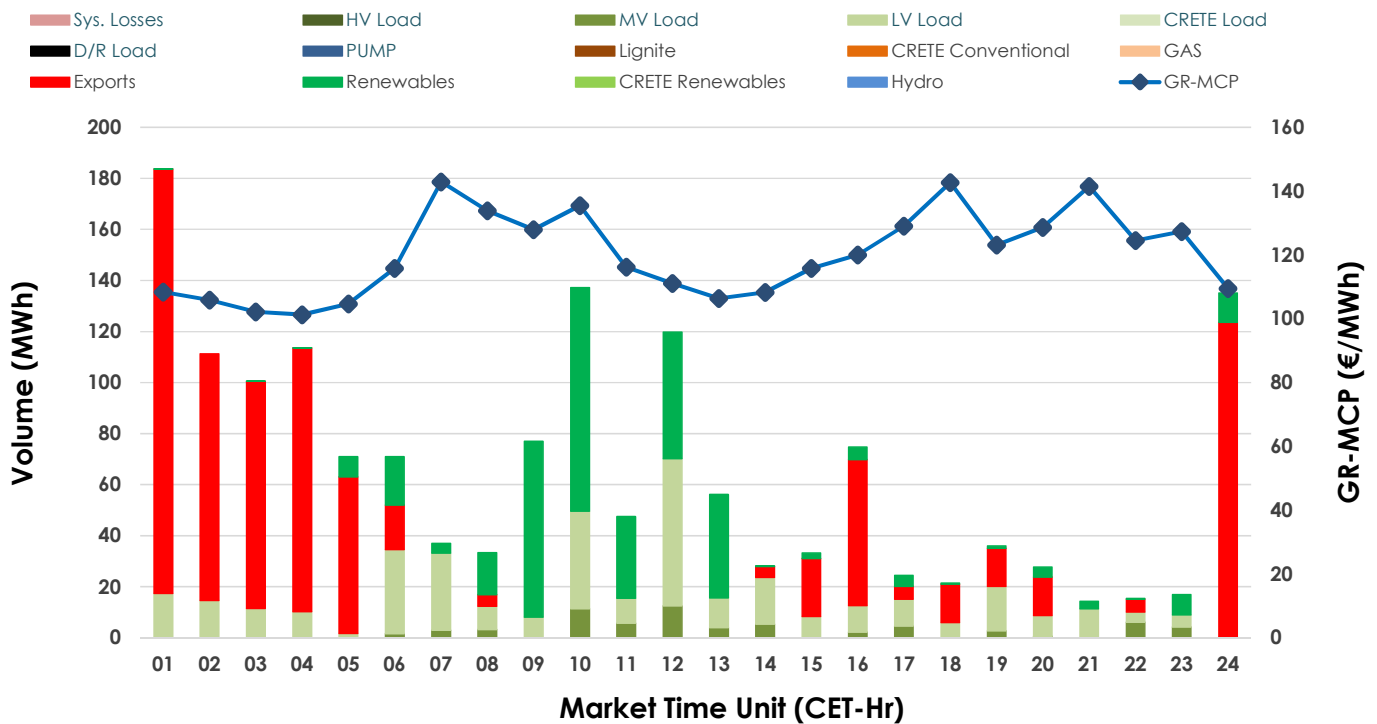


## 24.03.2025 IDA '2' Market - Sell



## 24.03.2025 IDA '2' Market - Buy



## GR Bidding Zone Weekly Figures

Delivery Day	18.03	19.03	20.03	21.03	22.03	23.03	24.03
	↗9%	→0%	↗14%	↘-7%	↘-15%	↘-20%	↗66%
Avg.MCP (€/MWh)	100.68	100.46	114.67	106.95	90.77	72.30	120.11
Max.MCP (€/MWh)	177.19	247.96	329.80	229.98	135.43	145.03	142.94
Min.MCP (€/MWh)	35.22	-5.00	0.13	4.95	21.91	14.00	101.30
	↘-19%	↗259%	↘-33%	↗42%	↘-36%	↗8%	↗14%
Tot.Vol(GWh)	1.17	4.20	2.82	3.99	2.56	2.78	3.17

## Trades by Order Type

Delivery Day	18.03	19.03	20.03	21.03	22.03	23.03	24.03
Order P.T	Sell & Buy Trades in (GWh) per Price Type						
PPT (S)							
HBD (S)	0.586	0.293	0.699	0.894	0.940	0.902	1.403
BLK (S)							
CPL (S)		1.809	0.710	1.101	0.342	0.488	0.184
PPT (B)							
HBD (B)	0.586	2.006	0.996	1.564	0.800	1.300	0.785
BLK (B)							
CPL (B)		0.096	0.413	0.432	0.483	0.090	0.801
Order P.T	Sell & Buy Orders Traded per Price Type						
PPT (S)							
HBD (S)	131	69	83	81	149	109	132
BLK (S)							
PPT (B)							
HBD (B)	158	208	167	172	84	122	140
BLK (B)							

<b>MCP</b>	Market Clearing Price (€/MWh)
<b>PPT</b>	Priority Price-Taking
<b>HBD</b>	Hybrid
<b>BLK</b>	Block
<b>CPL</b>	Market Coupling Flow

## Trade's Volume Mix

	Sell - MWh	Buy - MWh	
Lignite	(0.0%) 0	0	(0.0%)
Crete Conv.	(0.0%) 0	0	(0.0%)
Gas	(65.4%) 1,037	0	(0.0%)
Hydro	(0.0%) 0	0	(0.0%)
Imports	(11.6%) 184		
RES	(22.8%) 361	365	(23.0%)
Crete RES	(0.0%) 0	0	(0.0%)
HV Load	(0.0%) 0	0	(0.0%)
MV Load	(0.0%) 0	68	(4.3%)
LV Load	(0.3%) 4	353	(22.2%)
Crete Load	(0.0%) 0	0	(0.0%)
Pumping	(0.0%) 0	0	(0.0%)
Exports		801	(50.5%)
Sys.Losses	(0.0%) 0	0	(0.0%)
D/R Load	(0.0%) 0	0	(0.0%)

