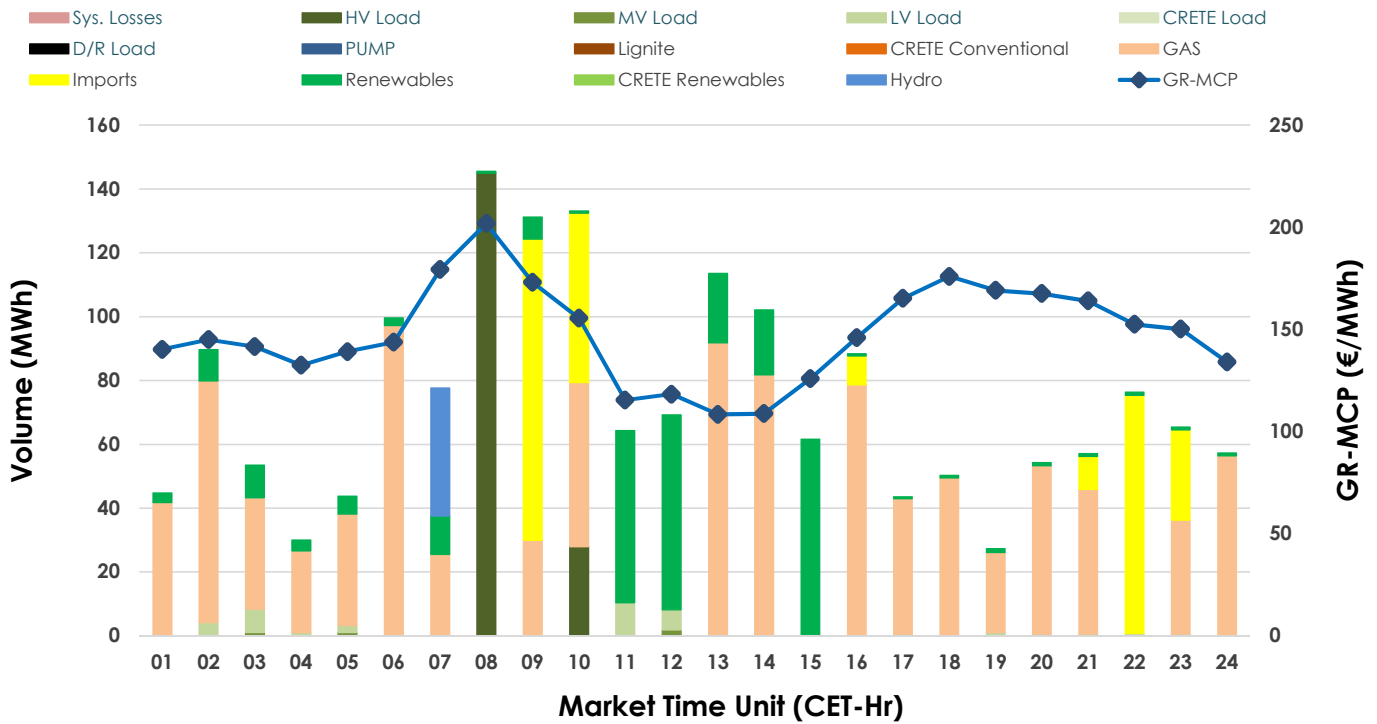
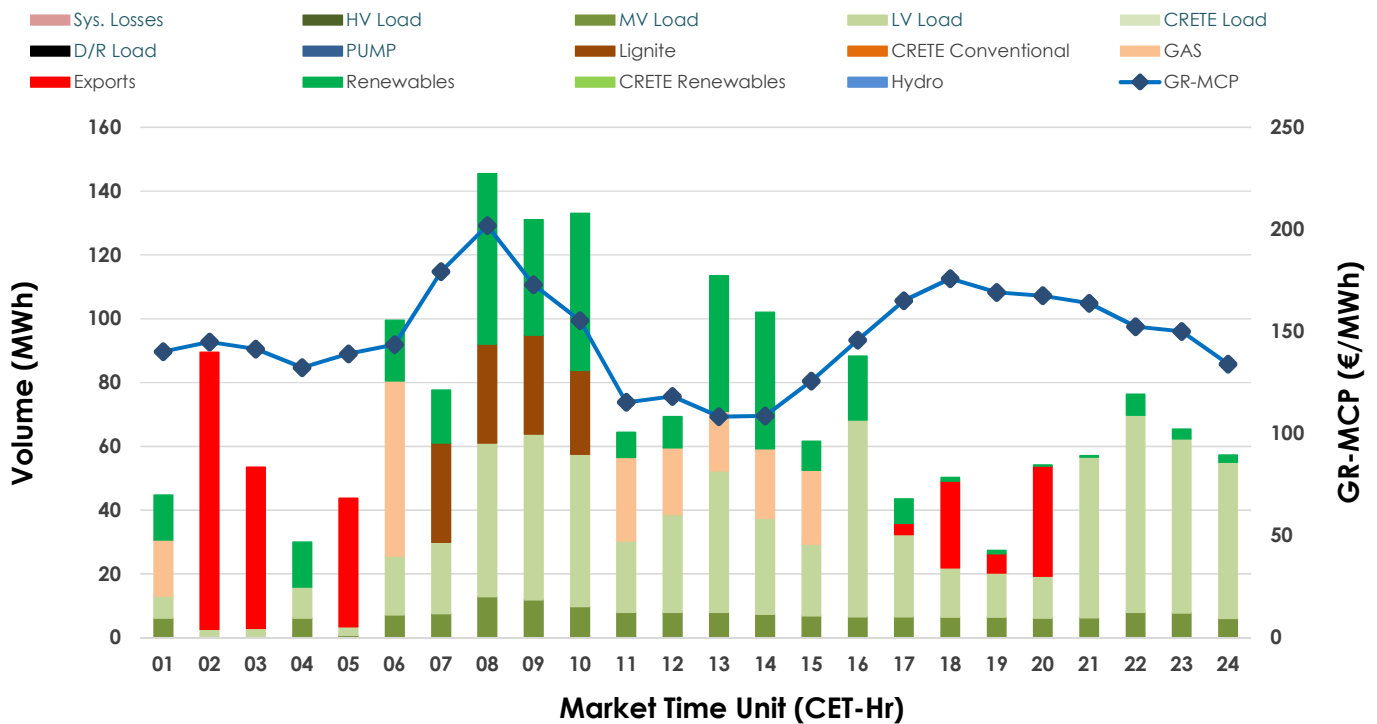


19.02.2025 IDA '1' Market - Sell



19.02.2025 IDA '1' Market - Buy



GR Bidding Zone Weekly Figures

Delivery Day	13.02	14.02	15.02	16.02	17.02	18.02	19.02
	↗ 14%	↘ -18%	↘ -18%	↗ 3%	↗ 13%	↗ 19%	↘ -23%
Avg.MCP (€/MWh)	204.36	167.27	137.00	141.71	160.29	191.07	148.00
Max.MCP (€/MWh)	359.78	309.85	178.86	178.86	271.42	403.06	201.92
Min.MCP (€/MWh)	121.09	121.20	110.51	120.34	118.62	125.00	108.35
	↗ 343%	↘ -71%	↗ 11%	↘ -12%	↗ 4%	↗ 83%	↘ -42%
Tot.Vol(GWh)	11.27	3.29	3.67	3.22	3.35	6.12	3.56

Trades by Order Type

Delivery Day	13.02	14.02	15.02	16.02	17.02	18.02	19.02
Order P.T	Sell & Buy Trades in (GWh) per Price Type						
PPT (S)							
HBD (S)	5.634	1.549	1.790	1.313	1.123	2.488	1.509
BLK (S)							
CPL (S)		0.097	0.043	0.297	0.552	0.570	0.270
PPT (B)							
HBD (B)	5.634	1.566	1.571	1.212	1.675	3.058	1.530
BLK (B)							
CPL (B)		0.080	0.263	0.398			0.249
Order P.T	Sell & Buy Orders Traded per Price Type						
PPT (S)							
HBD (S)	224	124	174	112	131	148	148
BLK (S)							
PPT (B)							
HBD (B)	244	317	269	197	219	318	286
BLK (B)							

MCP	Market Clearing Price (€/MWh)
PPT	Priority Price-Taking
HBD	Hybrid
BLK	Block
CPL	Market Coupling Flow

Trade's Volume Mix

	Sell - MWh	Buy - MWh	
Lignite	(0.0%) 0	119	(6.7%)
Crete Conv.	(0.0%) 0	0	(0.0%)
Gas	(54.9%) 977	183	(10.3%)
Hydro	(2.2%) 40	0	(0.0%)
Imports	(15.2%) 270		
RES	(15.7%) 279	357	(20.1%)
Crete RES	(0.0%) 0	0	(0.0%)
HV Load	(9.7%) 173	0	(0.0%)
MV Load	(0.2%) 4	162	(9.1%)
LV Load	(2.0%) 35	709	(39.9%)
Crete Load	(0.0%) 0	0	(0.0%)
Pumping	(0.0%) 0	0	(0.0%)
Exports		249	(14.0%)
Sys.Losses	(0.0%) 0	0	(0.0%)
D/R Load	(0.0%) 0	0	(0.0%)

