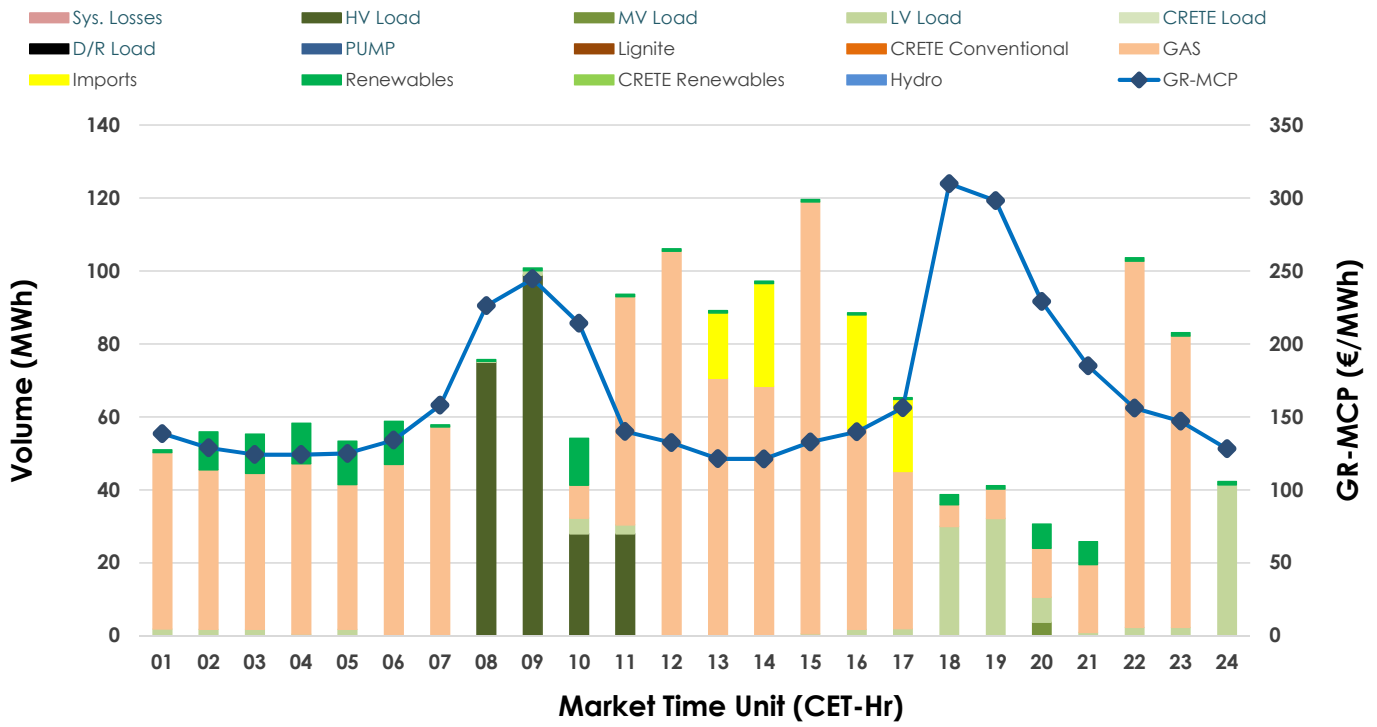
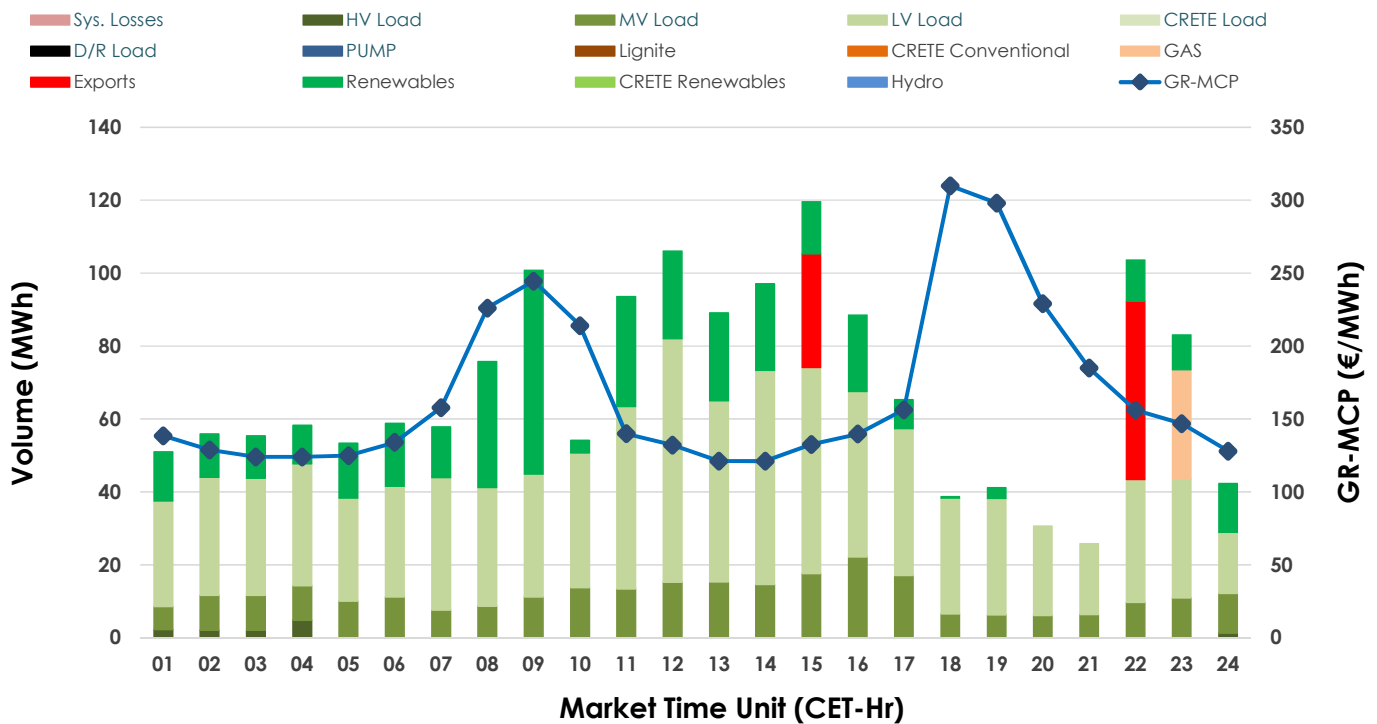


14.02.2025 IDA '1' Market - Sell



14.02.2025 IDA '1' Market - Buy



GR Bidding Zone Weekly Figures

Delivery Day	08.02	09.02	10.02	11.02	12.02	13.02	14.02
	📉-15%	📈12%	📈13%	📈10%	📈14%	📈14%	📉-18%
Avg.MCP (€/MWh)	112.71	126.26	142.88	157.32	179.93	204.36	167.27
Max.MCP (€/MWh)	159.49	178.72	206.43	241.83	371.76	359.78	309.85
Min.MCP (€/MWh)	62.81	58.30	107.35	105.05	125.09	121.09	121.20
	📉-52%	📈26%	📈23%	📈101%	📉-59%	📈343%	📉-71%
Tot.Vol(GWh)	2.01	2.54	3.12	6.26	2.54	11.27	3.29

Trades by Order Type

Delivery Day	08.02	09.02	10.02	11.02	12.02	13.02	14.02
Order P.T	Sell & Buy Trades in (GWh) per Price Type						
PPT (S)							
HBD (S)	0.931	1.224	1.158	2.877	1.271	5.634	1.549
BLK (S)							
CPL (S)	0.076	0.048	0.403	0.255			0.097
PPT (B)							
HBD (B)	1.007	1.271	1.402	3.131	1.271	5.634	1.566
BLK (B)							
CPL (B)			0.160				0.080
Order P.T	Sell & Buy Orders Traded per Price Type						
PPT (S)							
HBD (S)	138	104	70	108	121	224	124
BLK (S)							
PPT (B)							
HBD (B)	235	172	224	309	305	244	317
BLK (B)							

MCP	Market Clearing Price (€/MWh)
PPT	Priority Price-Taking
HBD	Hybrid
BLK	Block
CPL	Market Coupling Flow

Trade's Volume Mix

	Sell - MWh	Buy - MWh	
Lignite	(0.0%) 0	0	(0.0%)
Crete Conv.	(0.0%) 0	0	(0.0%)
Gas	(65.9%) 1,085	30	(1.8%)
Hydro	(0.0%) 0	0	(0.0%)
Imports	(5.9%) 97		
RES	(5.7%) 94	370	(22.5%)
Crete RES	(0.0%) 0	0	(0.0%)
HV Load	(14.0%) 230	13	(0.8%)
MV Load	(0.2%) 4	270	(16.4%)
LV Load	(8.3%) 136	883	(53.7%)
Crete Load	(0.0%) 0	0	(0.0%)
Pumping	(0.0%) 0	0	(0.0%)
Exports		80	(4.9%)
Sys.Losses	(0.0%) 0	0	(0.0%)
D/R Load	(0.0%) 0	0	(0.0%)

