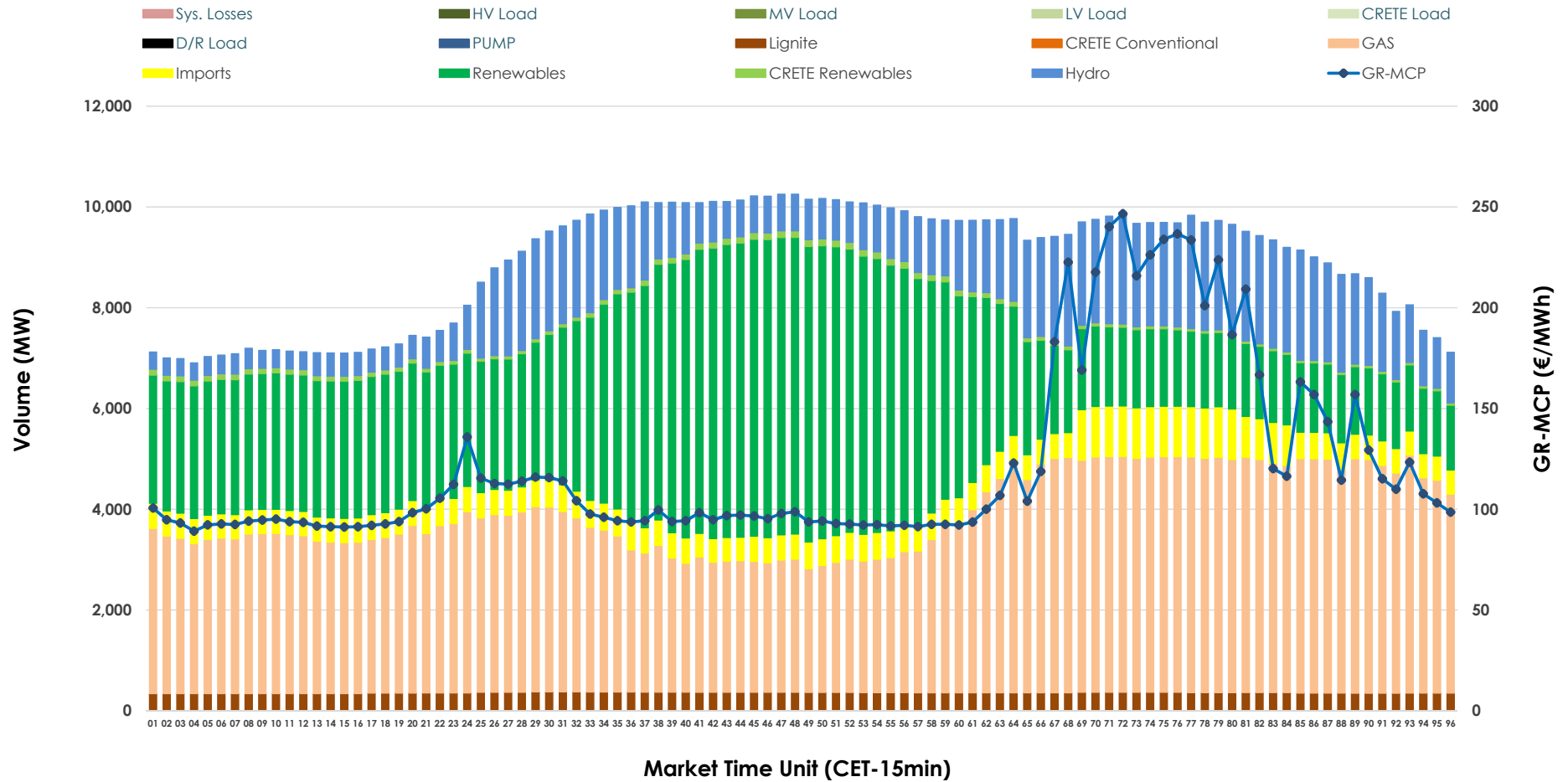


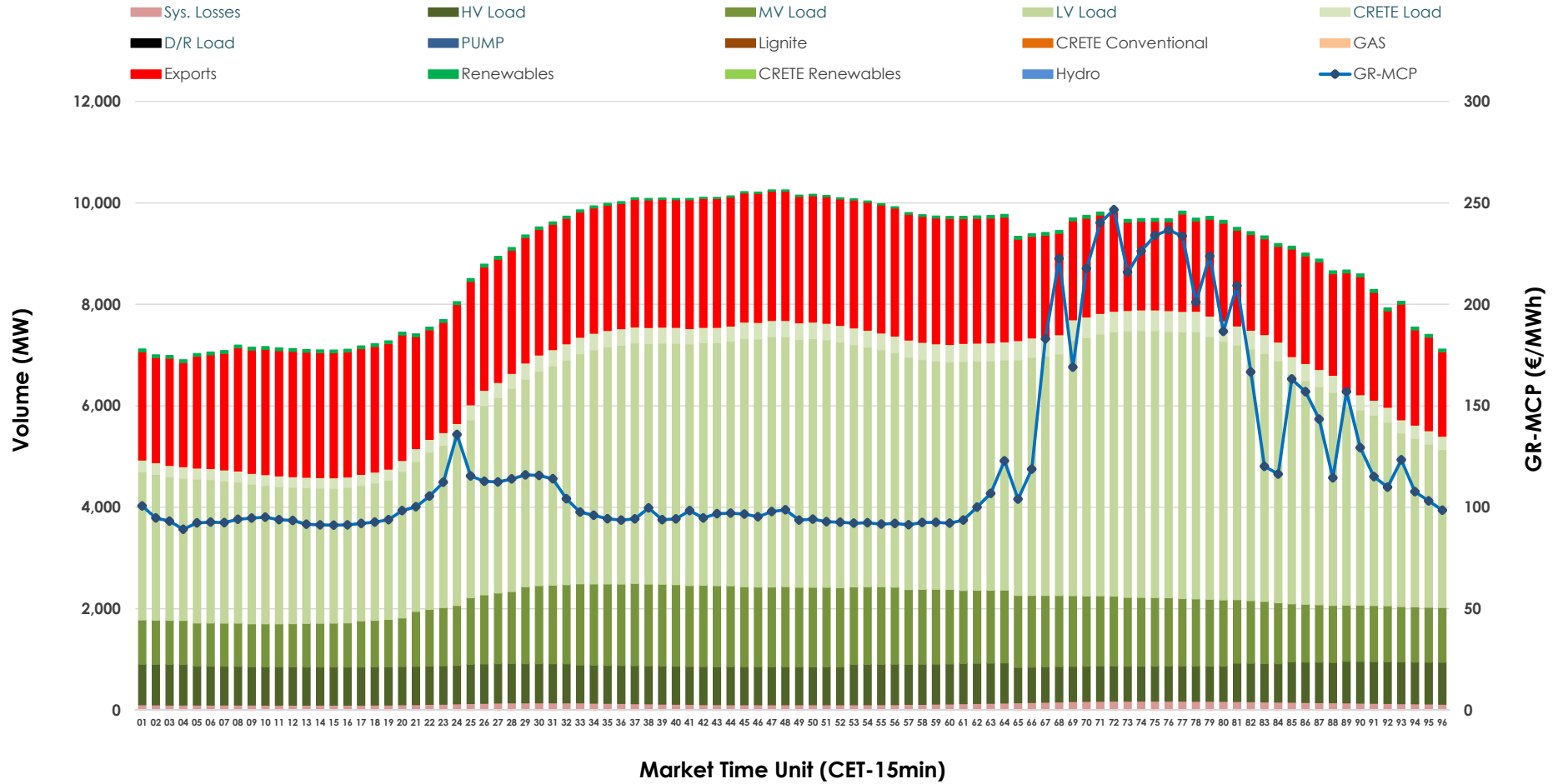


Day-Ahead Market Outlook

02.02.2026 Day-Ahead Market - Sell



02.02.2026 Day-Ahead Market - Buy



GR Bidding Zone Weekly Figures

Delivery Day	27.01	28.01	29.01	30.01	31.01	01.02	02.02
	↗ 29%	↘ -31%	↗ 2%	↗ 1%	↗ 8%	↘ -4%	↗ 20%
Avg.MCP (€/MWh)	137.69	94.63	96.93	97.48	105.72	101.14	121.82
Max.MCP (€/MWh)	284.06	157.84	178.52	162.33	155.04	134.83	246.62
Min.MCP (€/MWh)	83.39	25.00	0.01	32.69	47.50	60.00	89.15
	↗ 0%	↗ 1%	↗ 0%	↘ -4%	↘ -5%	↘ -2%	↗ 12%
Tot.Vol(GWh)	422.24	426.74	427.94	410.83	391.47	383.04	429.13

Trades by Order Type

Delivery Day		27.01	28.01	29.01	30.01	31.01	01.02	02.02	
Ord Price Type		Sell & Buy Trades in (GWh) per Price Type							(%)
PPT	(S)	85.184	97.501	103.603	94.378	86.154	93.785	94.401	44.00%
HBD	(S)	71.927	76.448	69.885	77.379	63.490	61.041	73.737	34.37%
BLK	(S)	52.021	39.420	40.479	33.660	46.080	34.935	44.589	20.78%
CPL	(S)	1.990	0.000	0.000	0.000	0.010	1.760	1.837	0.86%
PPT	(B)	14.688	15.173	14.595	14.582	13.273	12.883	14.412	6.72%
HBD	(B)	156.463	156.132	154.909	149.993	144.217	139.193	157.240	73.28%
BLK	(B)	0.000	0.000	0.000	0.000	0.000	0.000	0.000	0.00%
CPL	(B)	39.970	42.063	44.464	40.843	38.244	39.446	42.912	20.00%
		Sell & Buy Orders Traded per Price Type							(%)
PPT	(S)	2113	2121	2169	2166	2238	2123	2177	44.18%
HBD	(S)	2983	2843	2630	2758	2948	2632	2732	55.44%
BLK	(S)	18	14	19	15	17	18	19	0.39%
PPT	(B)	2294	2276	2270	2272	2230	2337	2229	36.48%
HBD	(B)	4146	3957	3992	4044	3974	3890	3882	63.52%
BLK	(B)	0	0	0	0	0	0	0	0.00%

- MCP** Market Clearing Price (€/MWh)
- PPT** Priority Price-Taking
- HBD** Hybrid
- BLK** Block
- CPL** Market Coupling Flow

Trade's Volume Mix

		Sell - MWh	Buy - MWh	
Lignite	(4.0%)	8,583	0	(0.0%)
Crete Conv.	(0.0%)	0	0	(0.0%)
Gas	(40.1%)	86,106	0	(0.0%)
Hydro	(14.3%)	30,577	0	(0.0%)
Imports	(6.5%)	13,907		
RES	(34.2%)	73,287	1,112	(0.5%)
Crete RES	(1.0%)	2,104	0	(0.0%)
HV Load	(0.0%)	0	18,212	(8.5%)
MV Load	(0.0%)	0	30,836	(14.4%)
LV Load	(0.0%)	0	99,240	(46.3%)
Crete Load	(0.0%)	0	7,463	(3.5%)
Pumping	(0.0%)	0	0	(0.0%)
Exports			54,538	(25.4%)
Sys.Losses	(0.0%)	0	3,162	(1.5%)
D/R Load	(0.0%)	0	0	(0.0%)

