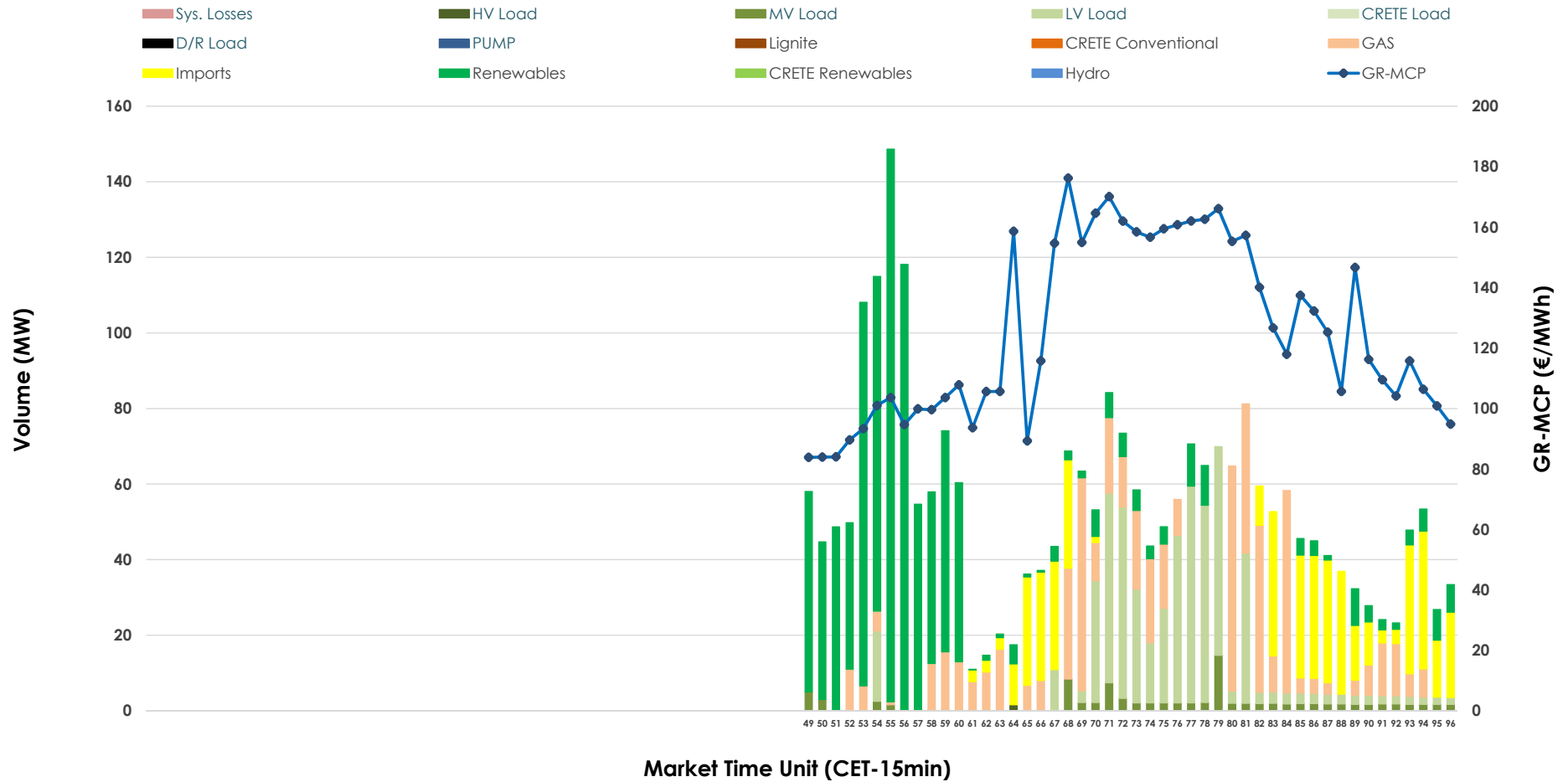


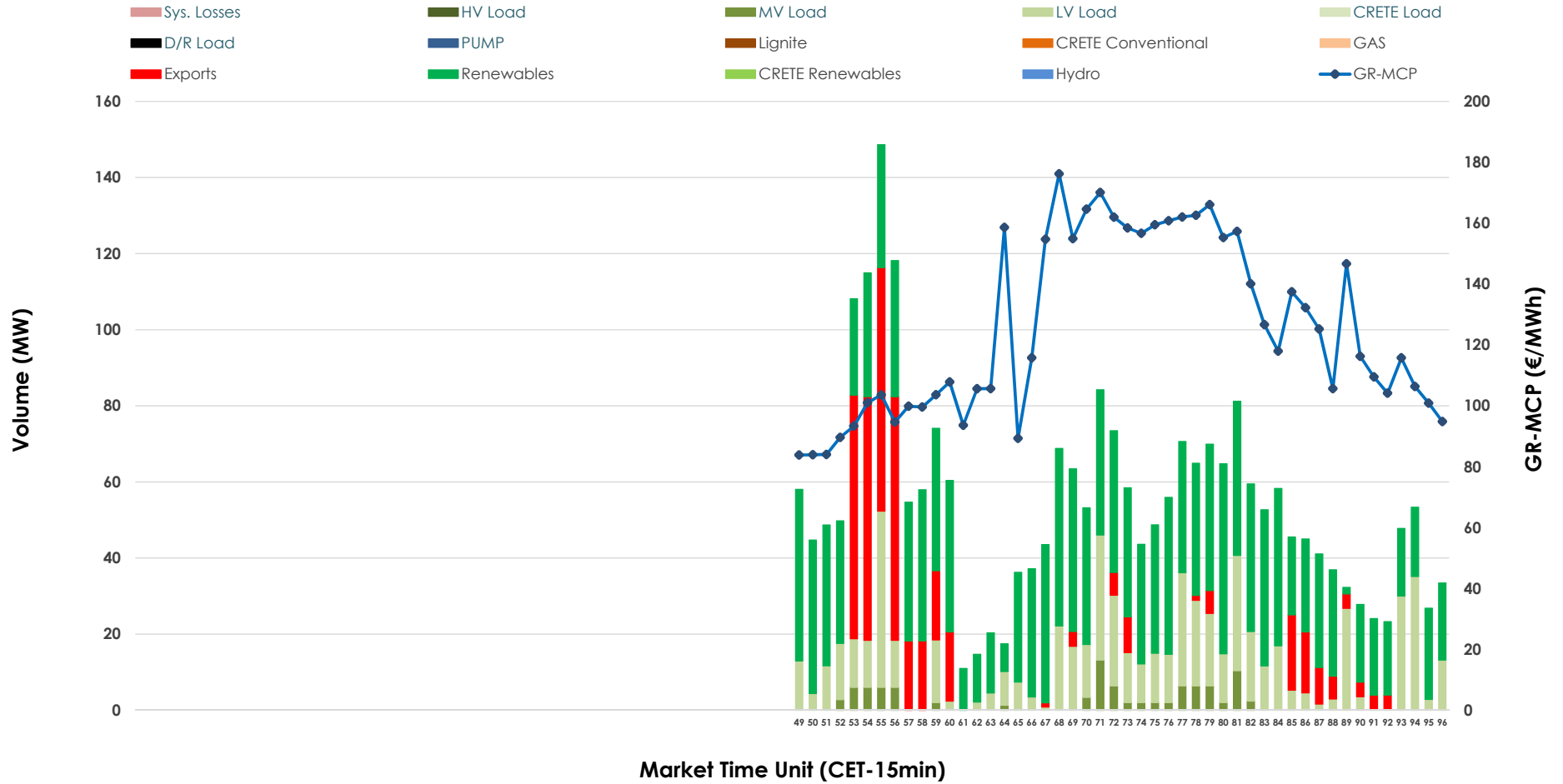


# IDA '3' Market Outlook

10.02.2026 IDA '3' Market - Sell



### 10.02.2026 IDA '3' Market - Buy



### GR Bidding Zone Weekly Figures

Delivery Day	04.02	05.02	06.02	07.02	08.02	09.02	10.02
	↓ -40%	↑ 36%	↘ -23%	↗ 14%	↗ 3%	↑ 53%	↘ -14%
<b>Avg.MCP (€/MWh)</b>	77.94	106.18	81.36	92.49	95.06	145.42	125.29
<b>Max.MCP (€/MWh)</b>	133.33	158.92	130.67	138.67	132.01	237.65	176.20
<b>Min.MCP (€/MWh)</b>	0.10	67.30	0.00	-25.81	-2.41	88.66	83.83
	↓ -65%	↑ 297%	↓ -88%	↑ 421%	↗ 12%	↑ 259%	↓ -82%
<b>Tot.Vol(GWh)</b>	0.73	2.92	0.35	1.84	2.07	7.41	1.31

### Trades by Order Type

Delivery Day		04.02	05.02	06.02	07.02	08.02	09.02	10.02	
<b>Ord Price Type</b>		<b>Sell &amp; Buy Trades in (GWh) per Price Type</b>							<b>(%)</b>
<b>PPT</b>	(S)	0.000	0.000	0.000	0.000	0.000	0.000	0.000	0.00%
<b>HBD</b>	(S)	0.367	0.935	0.177	0.703	0.384	2.469	0.543	82.62%
<b>BLK</b>	(S)	0.000	0.000	0.000	0.000	0.000	0.000	0.000	0.00%
<b>CPL</b>	(S)	0.000	0.523	0.000	0.219	0.649	1.238	0.114	17.38%
<b>PPT</b>	(B)	0.000	0.000	0.000	0.000	0.000	0.000	0.000	0.00%
<b>HBD</b>	(B)	0.319	1.454	0.171	0.734	0.932	3.557	0.551	83.89%
<b>BLK</b>	(B)	0.000	0.000	0.000	0.000	0.000	0.000	0.000	0.00%
<b>CPL</b>	(B)	0.048	0.004	0.006	0.188	0.101	0.149	0.106	16.11%
		<b>Sell &amp; Buy Orders Traded per Price Type</b>							<b>(%)</b>
<b>PPT</b>	(S)	0	0	0	0	0	0	0	0.00%
<b>HBD</b>	(S)	140	268	90	143	112	414	166	100.00%
<b>BLK</b>	(S)	0	0	0	0	0	0	0	0.00%
<b>PPT</b>	(B)	0	0	0	0	0	0	0	0.00%
<b>HBD</b>	(B)	213	153	120	160	327	140	333	100.00%
<b>BLK</b>	(B)	0	0	0	0	0	0	0	0.00%

**MCP** Market Clearing Price (€/MWh)  
**PPT** Priority Price-Taking  
**HBD** Hybrid  
**BLK** Block  
**CPL** Market Coupling Flow

### Trade's Volume Mix

	Sell - MWh	Buy - MWh	
<b>Lignite</b> (0.0%)	0	0	(0.0%)
<b>Crete Conv.</b> (0.0%)	0	0	(0.0%)
<b>Gas</b> (22.2%)	146	0	(0.0%)
<b>Hydro</b> (0.0%)	0	0	(0.0%)
<b>Imports</b> (17.4%)	114		
<b>RES</b> (36.8%)	242	372	(56.7%)
<b>Crete RES</b> (0.0%)	0	0	(0.0%)
<b>HV Load</b> (0.1%)	0	0	(0.0%)
<b>MV Load</b> (3.6%)	23	24	(3.6%)
<b>LV Load</b> (20.0%)	132	155	(23.6%)
<b>Crete Load</b> (0.0%)	0	0	(0.0%)
<b>Pumping</b> (0.0%)	0	0	(0.0%)
<b>Exports</b>		106	(16.1%)
<b>Sys.Losses</b> (0.0%)	0	0	(0.0%)
<b>D/R Load</b> (0.0%)	0	0	(0.0%)

