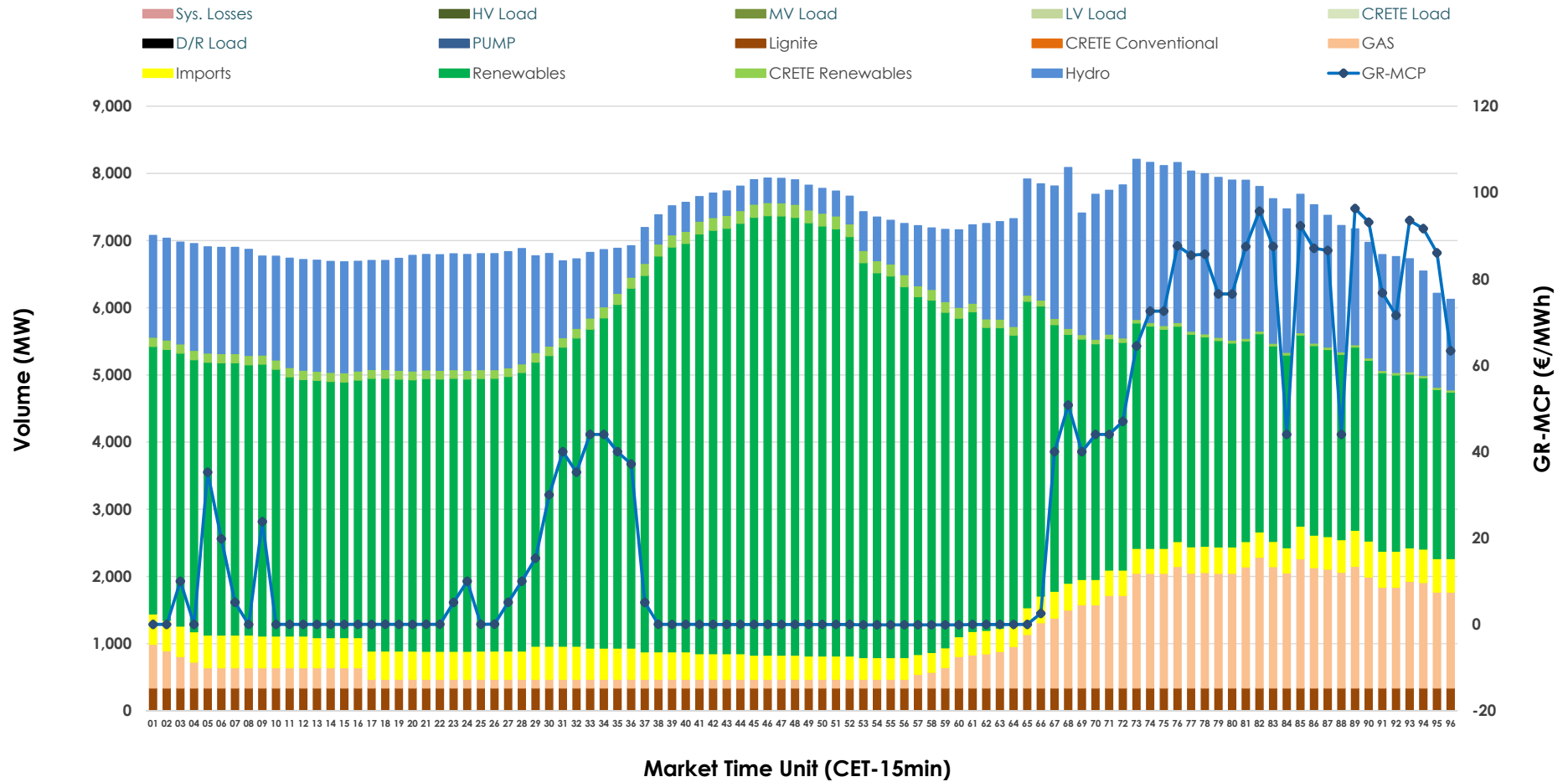


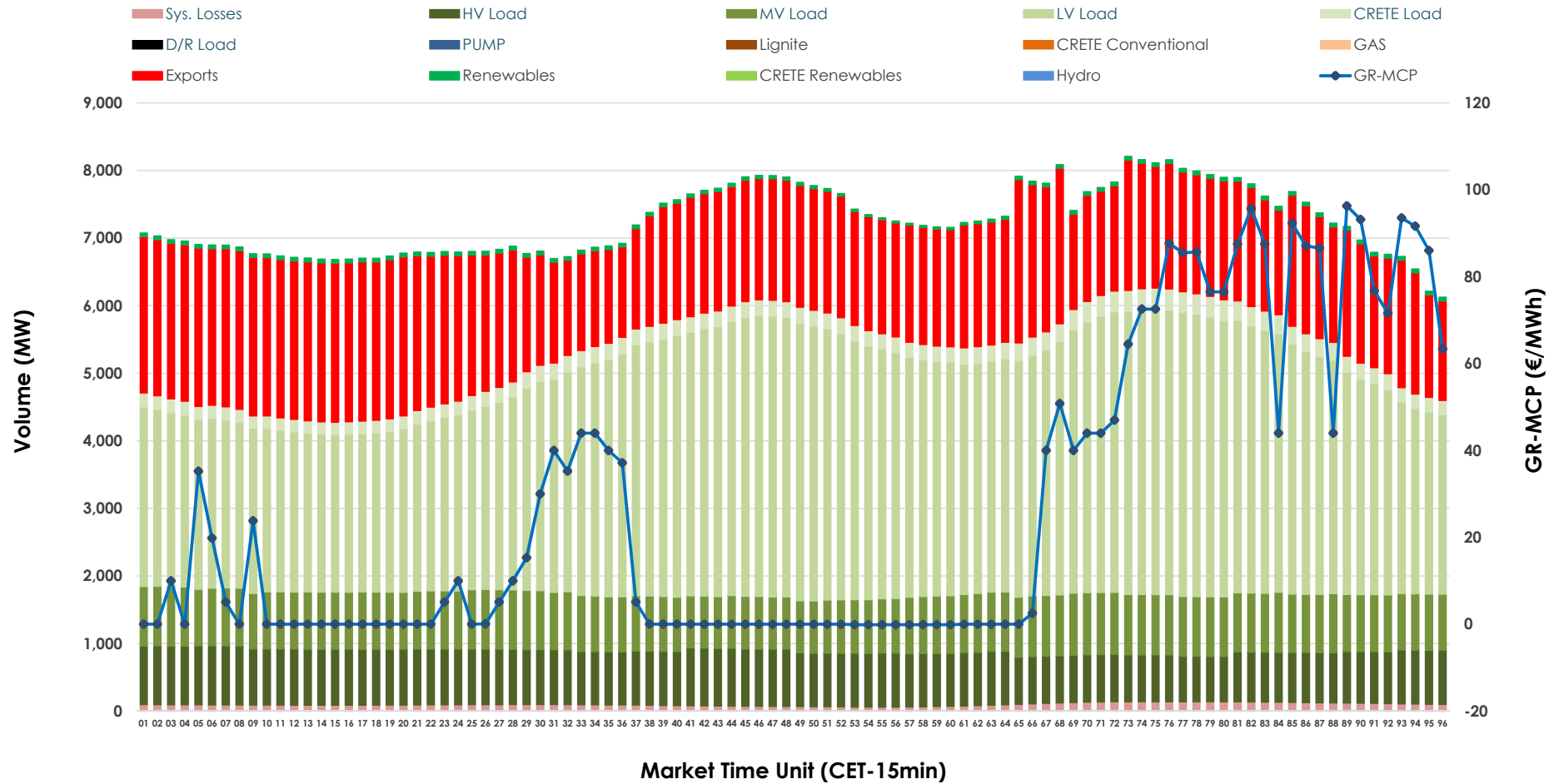


# Day-Ahead Market Outlook

15.02.2026 Day-Ahead Market - Sell



### 15.02.2026 Day-Ahead Market - Buy



### GR Bidding Zone Weekly Figures

Delivery Day	09.02	10.02	11.02	12.02	13.02	14.02	15.02
	↑ 50%	↓ -10%	↓ -11%	↓ -19%	↑ 9%	↓ -28%	↓ -59%
<b>Avg.MCP (€/MWh)</b>	130.53	117.00	103.57	83.74	91.43	65.70	27.10
<b>Max.MCP (€/MWh)</b>	217.65	183.80	145.00	113.10	141.81	116.13	96.30
<b>Min.MCP (€/MWh)</b>	96.06	89.31	35.29	0.01	0.01	0.01	-0.10
	↗ 4%	↗ 5%	→ 0%	↘ 3%	↘ -4%	↘ -4%	↘ -10%
<b>Tot.Vol(GWh)</b>	387.84	407.28	409.25	420.46	404.98	386.76	348.20

### Trades by Order Type

Delivery Day		09.02	10.02	11.02	12.02	13.02	14.02	15.02	
<b>Ord Price Type</b>		<b>Sell &amp; Buy Trades in (GWh) per Price Type</b>							<b>(%)</b>
<b>PPT</b>	(S)	88.222	95.796	102.018	115.484	104.129	102.419	106.090	60.94%
<b>HBD</b>	(S)	62.341	69.091	66.237	72.762	68.013	69.070	60.657	34.84%
<b>BLK</b>	(S)	40.788	36.594	35.597	21.985	28.714	21.890	7.351	4.22%
<b>CPL</b>	(S)	2.568	2.161	0.771	0.000	1.634	0.000	0.000	0.00%
<b>PPT</b>	(B)	13.693	13.846	13.499	13.165	13.224	12.407	13.254	7.61%
<b>HBD</b>	(B)	145.360	150.538	150.234	150.839	146.580	137.891	127.444	73.20%
<b>BLK</b>	(B)	0.000	0.000	0.000	0.000	0.000	0.000	0.000	0.00%
<b>CPL</b>	(B)	34.865	39.257	40.890	46.227	42.686	43.080	33.399	19.18%
		<b>Sell &amp; Buy Orders Traded per Price Type</b>							<b>(%)</b>
<b>PPT</b>	(S)	2318	2423	2522	2454	2309	2270	2169	49.06%
<b>HBD</b>	(S)	3008	2939	2839	2701	2811	2763	2249	50.87%
<b>BLK</b>	(S)	12	8	10	13	11	9	3	0.07%
<b>PPT</b>	(B)	2236	2234	2218	2237	2231	2341	2367	35.12%
<b>HBD</b>	(B)	3870	4029	4018	4097	4012	4210	4372	64.88%
<b>BLK</b>	(B)	0	0	0	0	0	0	0	0.00%

**MCP** Market Clearing Price (€/MWh)  
**PPT** Priority Price-Taking  
**HBD** Hybrid  
**BLK** Block  
**CPL** Market Coupling Flow

### Trade's Volume Mix

		Sell - MWh	Buy - MWh	
<b>Lignite</b>	(4.7%)	8,160	0	(0.0%)
<b>Crete Conv.</b>	(0.0%)	0	0	(0.0%)
<b>Gas</b>	(9.2%)	16,014	0	(0.0%)
<b>Hydro</b>	(19.7%)	34,275	0	(0.0%)
<b>Imports</b>	(5.7%)	9,987		
<b>RES</b>	(59.0%)	102,786	1,225	(0.7%)
<b>Crete RES</b>	(1.7%)	2,875	0	(0.0%)
<b>HV Load</b>	(0.0%)	0	18,965	(10.9%)
<b>MV Load</b>	(0.0%)	0	20,338	(11.7%)
<b>LV Load</b>	(0.0%)	0	80,055	(46.0%)
<b>Crete Load</b>	(0.0%)	0	5,706	(3.3%)
<b>Pumping</b>	(0.0%)	0	0	(0.0%)
<b>Exports</b>			45,463	(26.1%)
<b>Sys.Losses</b>	(0.0%)	0	2,346	(1.3%)
<b>D/R Load</b>	(0.0%)	0	0	(0.0%)

