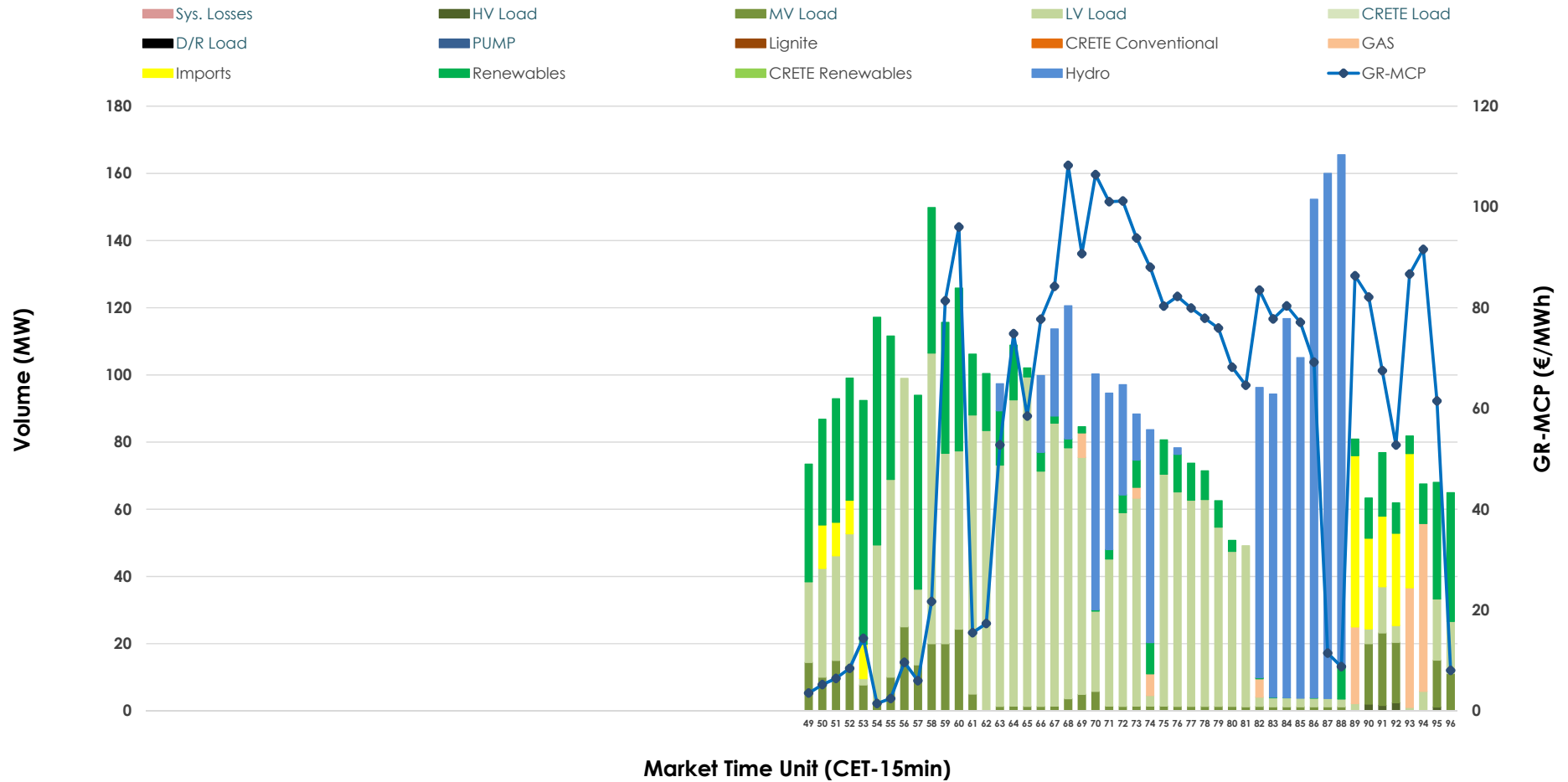


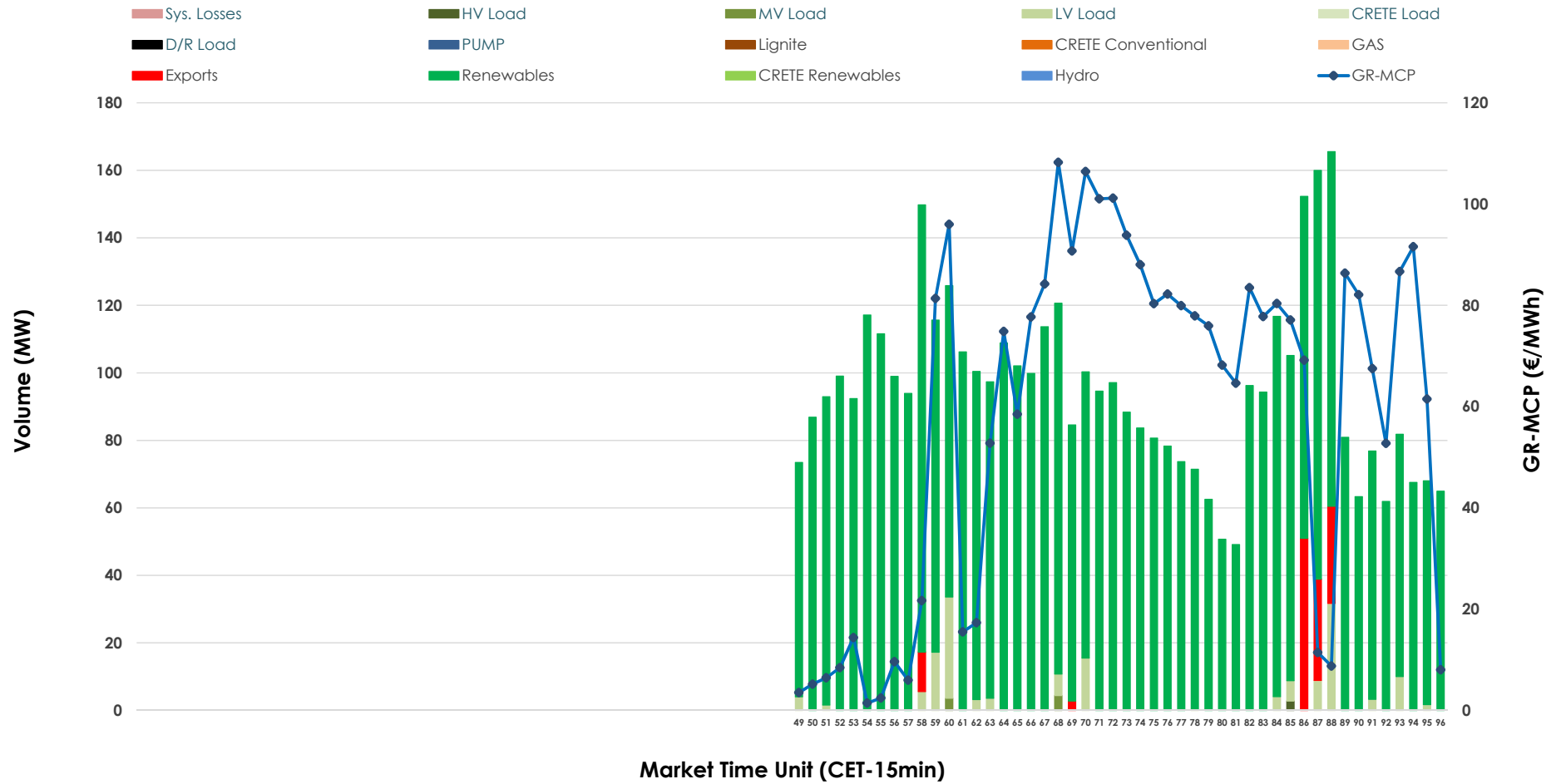


IDA '3' Market Outlook

14.02.2026 IDA '3' Market - Sell



14.02.2026 IDA '3' Market - Buy



GR Bidding Zone Weekly Figures

Delivery Day	08.02	09.02	10.02	11.02	12.02	13.02	14.02
	↗ 3%	↕ 53%	↘ -14%	↘ -32%	↘ -18%	↕ 43%	↘ -42%
Avg.MCP (€/MWh)	95.06	145.42	125.29	85.74	70.24	100.63	58.35
Max.MCP (€/MWh)	132.01	237.65	176.20	145.63	101.74	148.40	108.25
Min.MCP (€/MWh)	-2.41	88.66	83.83	-35.00	-24.99	47.95	1.44
	↗ 12%	↕ 259%	↘ -82%	↕ 115%	↘ -65%	↕ 276%	↘ -38%
Tot.Vol(GWh)	2.07	7.41	1.31	2.82	0.99	3.70	2.29

Trades by Order Type

Delivery Day		08.02	09.02	10.02	11.02	12.02	13.02	14.02	
Ord Price Type		Sell & Buy Trades in (GWh) per Price Type							(%)
PPT	(S)	0.000	0.000	0.000	0.000	0.000	0.000	0.000	0.00%
HBD	(S)	0.384	2.469	0.543	1.399	0.493	1.744	1.092	95.42%
BLK	(S)	0.000	0.000	0.000	0.000	0.000	0.000	0.000	0.00%
CPL	(S)	0.649	1.238	0.114	0.013	0.000	0.108	0.052	4.58%
PPT	(B)	0.000	0.000	0.000	0.000	0.000	0.000	0.000	0.00%
HBD	(B)	0.932	3.557	0.551	0.234	0.453	1.435	1.113	97.28%
BLK	(B)	0.000	0.000	0.000	0.000	0.000	0.000	0.000	0.00%
CPL	(B)	0.101	0.149	0.106	1.178	0.040	0.417	0.031	2.72%
		Sell & Buy Orders Traded per Price Type							(%)
PPT	(S)	0	0	0	0	0	0	0	0.00%
HBD	(S)	112	414	166	207	147	158	203	100.00%
BLK	(S)	0	0	0	0	0	0	0	0.00%
PPT	(B)	0	0	0	0	0	0	0	0.00%
HBD	(B)	327	140	333	108	208	366	207	100.00%
BLK	(B)	0	0	0	0	0	0	0	0.00%

- MCP** Market Clearing Price (€/MWh)
- PPT** Priority Price-Taking
- HBD** Hybrid
- BLK** Block
- CPL** Market Coupling Flow

Trade's Volume Mix

	Sell - MWh	Buy - MWh	
Lignite (0.0%)	0	0	(0.0%)
Crete Conv. (0.0%)	0	0	(0.0%)
Gas (2.9%)	33	0	(0.0%)
Hydro (25.6%)	293	0	(0.0%)
Imports (4.6%)	52		
RES (17.8%)	204	1,072	(93.7%)
Crete RES (0.0%)	0	0	(0.0%)
HV Load (0.2%)	2	1	(0.1%)
MV Load (6.7%)	77	2	(0.2%)
LV Load (42.2%)	483	38	(3.3%)
Crete Load (0.0%)	0	0	(0.0%)
Pumping (0.0%)	0	0	(0.0%)
Exports		31	(2.7%)
Sys.Losses (0.0%)	0	0	(0.0%)
D/R Load (0.0%)	0	0	(0.0%)

