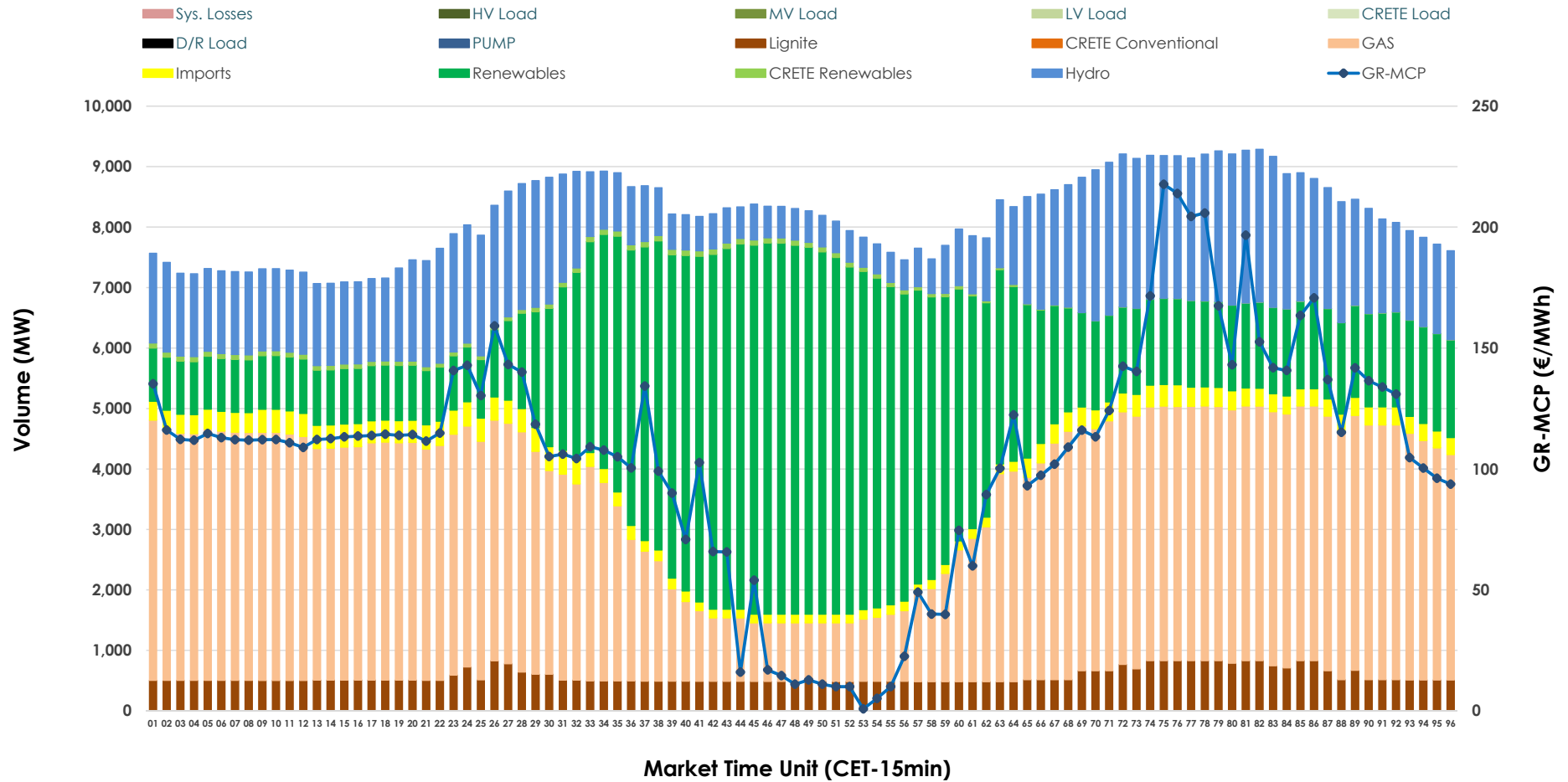


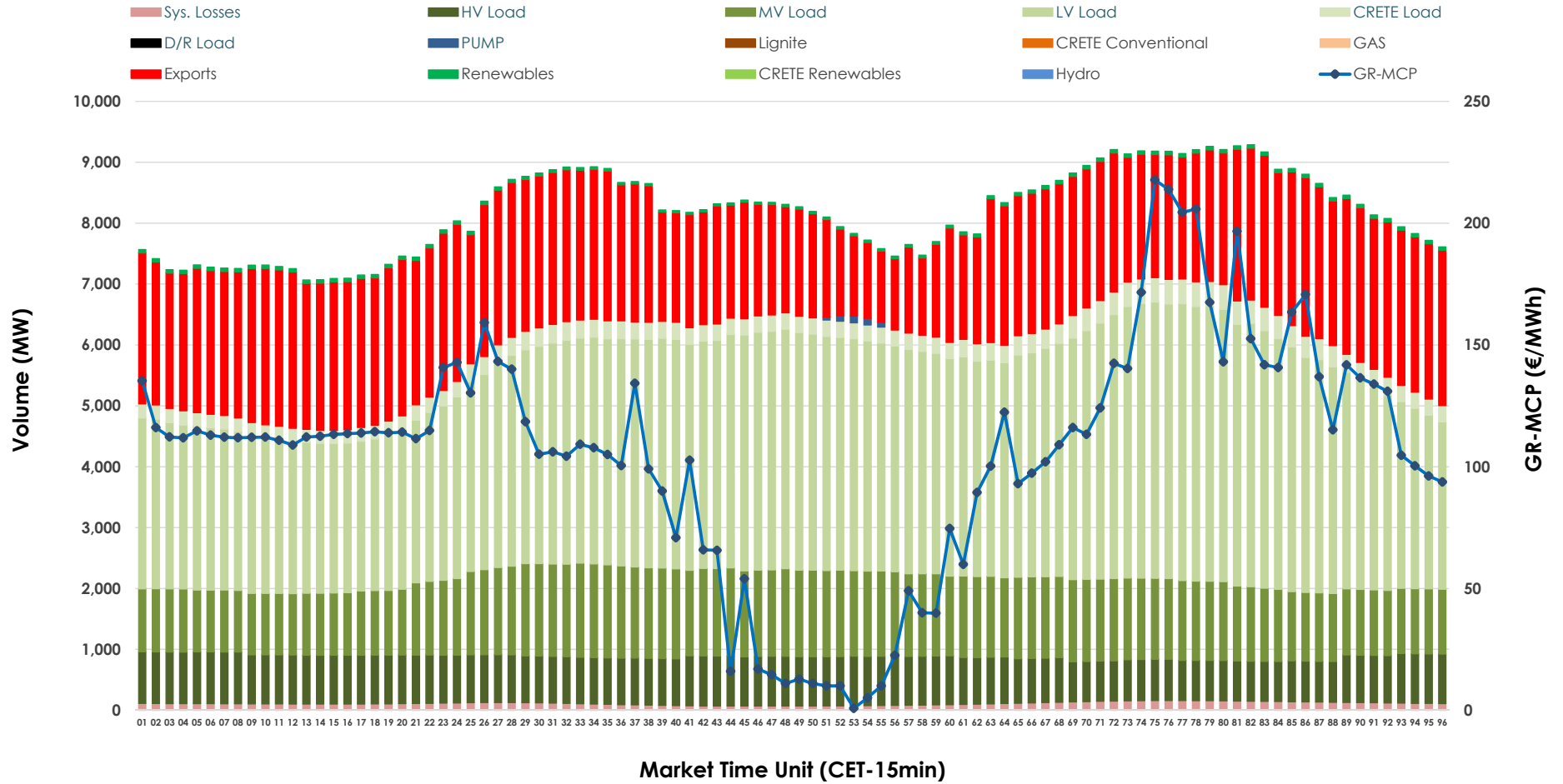


Day-Ahead Market Outlook

05.03.2026 Day-Ahead Market - Sell



05.03.2026 Day-Ahead Market - Buy



GR Bidding Zone Weekly Figures

Delivery Day	27.02	28.02	01.03	02.03	03.03	04.03	05.03
	↗ 15%	↘ -21%	↘ -23%	↗ 100%	↗ 32%	↘ -4%	↗ 3%
Avg.MCP (€/MWh)	65.66	52.12	40.11	80.04	105.79	102.04	105.57
Max.MCP (€/MWh)	146.17	105.16	112.24	205.76	224.94	261.83	217.72
Min.MCP (€/MWh)	0.01	-0.04	-1.03	0.00	9.90	0.01	0.79
	↘ -1%	↘ -7%	↗ -1%	↗ 3%	↗ 3%	↗ 2%	↘ -2%
Tot.Vol(GWh)	399.06	371.47	369.53	381.72	391.40	400.49	393.19

Trades by Order Type

Delivery Day		27.02	28.02	01.03	02.03	03.03	04.03	05.03	
Ord Price Type		Sell & Buy Trades in (GWh) per Price Type							(%)
PPT	(S)	107.369	113.204	110.143	97.023	93.316	92.023	84.357	42.91%
HBD	(S)	66.550	56.490	60.318	64.656	66.501	72.545	68.571	34.88%
BLK	(S)	25.283	16.041	14.306	27.861	33.700	35.572	43.620	22.19%
CPL	(S)	0.327	0.000	0.000	1.320	2.182	0.106	0.050	0.03%
PPT	(B)	12.878	13.841	12.531	12.663	12.979	12.356	12.083	6.15%
HBD	(B)	150.080	138.903	130.663	144.885	144.065	145.411	144.972	73.74%
BLK	(B)	0.000	0.000	0.000	0.000	0.000	0.000	0.000	0.00%
CPL	(B)	36.571	32.991	41.573	33.312	38.654	42.479	39.542	20.11%
		Sell & Buy Orders Traded per Price Type							(%)
PPT	(S)	2382	2360	2304	2276	2284	2119	1990	39.44%
HBD	(S)	2859	2414	2254	2788	2973	2968	3040	60.26%
BLK	(S)	12	7	5	12	13	13	15	0.30%
PPT	(B)	2233	2317	2301	2187	2194	2196	2224	35.60%
HBD	(B)	4005	4039	4038	3969	3908	3999	4023	64.40%
BLK	(B)	0	0	0	0	0	0	0	0.00%

- MCP** Market Clearing Price (€/MWh)
- PPT** Priority Price-Taking
- HBD** Hybrid
- BLK** Block
- CPL** Market Coupling Flow

Trade's Volume Mix

	Sell - MWh	Buy - MWh	
Lignite (6.9%)	13,605	0	(0.0%)
Crete Conv. (0.0%)	0	0	(0.0%)
Gas (39.6%)	77,798	0	(0.0%)
Hydro (17.9%)	35,251	0	(0.0%)
Imports (3.4%)	6,716		
RES (31.5%)	62,005	1,182	(0.6%)
Crete RES (0.6%)	1,223	0	(0.0%)
HV Load (0.0%)	0	18,458	(9.4%)
MV Load (0.0%)	0	30,475	(15.5%)
LV Load (0.0%)	0	83,852	(42.7%)
Crete Load (0.0%)	0	6,970	(3.5%)
Pumping (0.0%)	0	109	(0.1%)
Exports		52,905	(26.9%)
Sys.Losses (0.0%)	0	2,647	(1.3%)
D/R Load (0.0%)	0	0	(0.0%)

