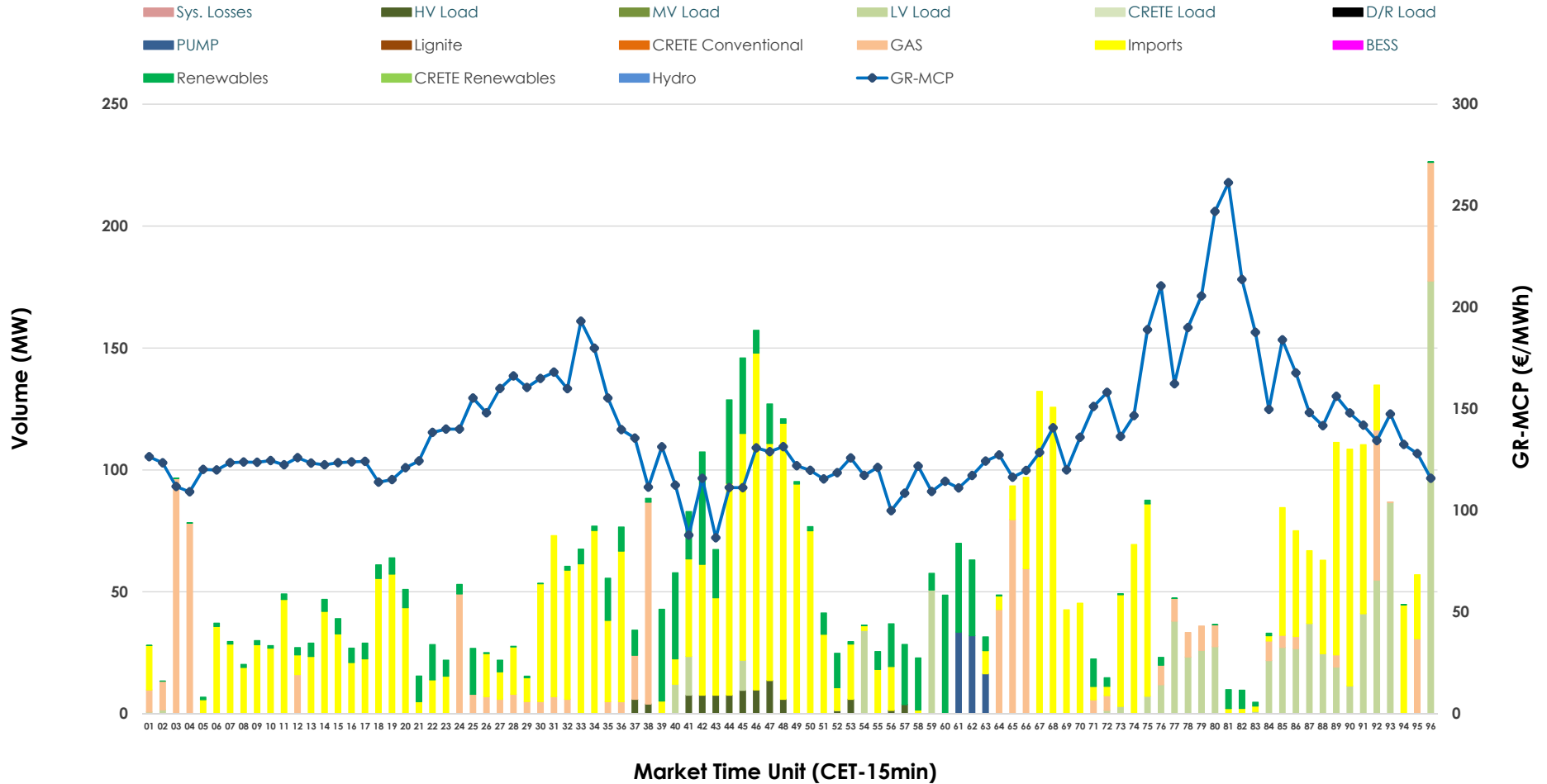


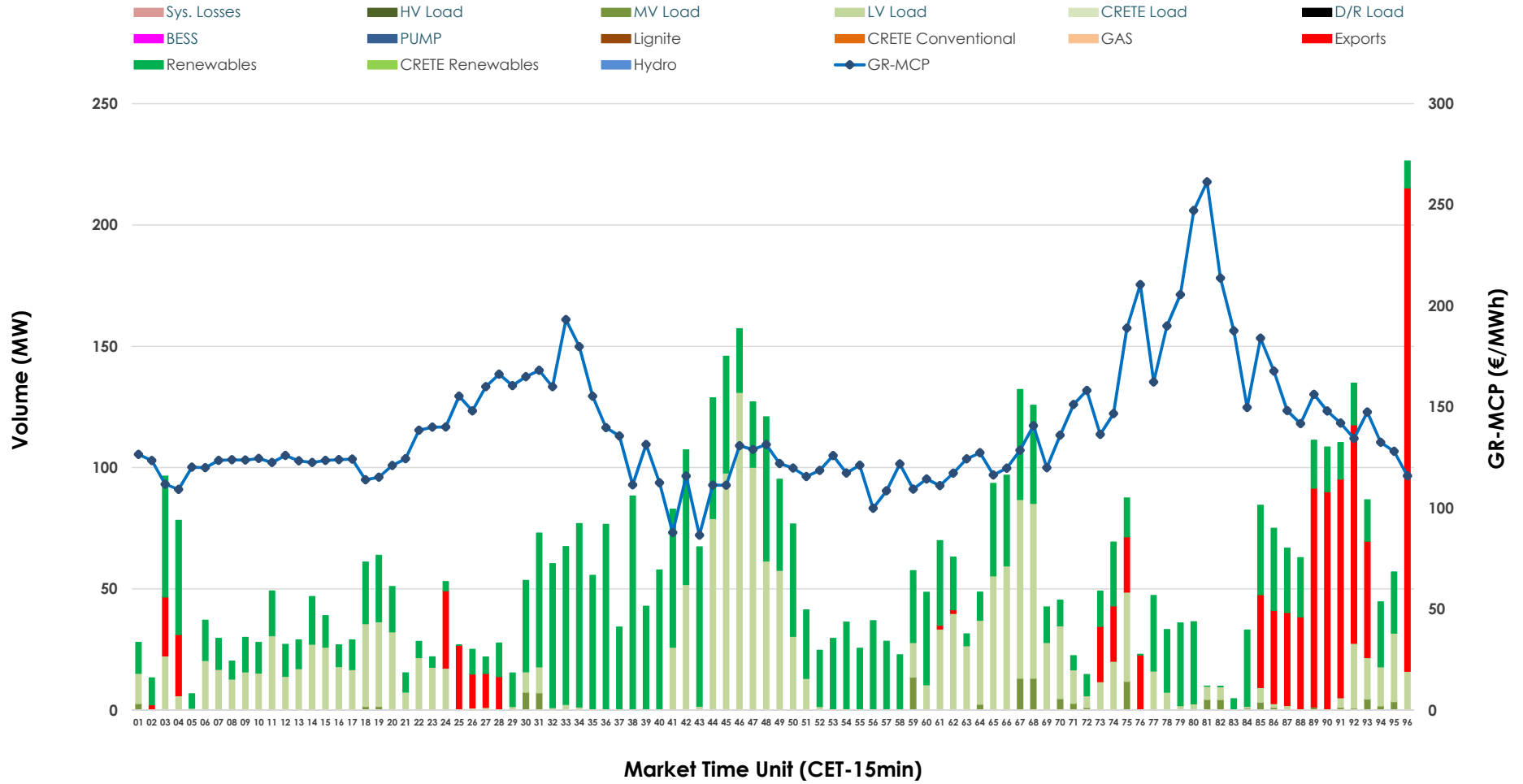


# IDA '2' Market Outlook

14.04.2026 IDA '2' Market - Sell



### 14.04.2026 IDA '2' Market - Buy



### GR Bidding Zone Weekly Figures

Delivery Day	08.04	09.04	10.04	11.04	12.04	13.04	14.04
	📉 -2%	📈 14%	📈 3%	📉 -8%	📈 -2%	📈 20%	📈 41%
<b>Avg.MCP (€/MWh)</b>	77.38	88.00	90.89	83.63	82.08	98.24	138.59
<b>Max.MCP (€/MWh)</b>	195.91	185.99	182.39	185.88	162.77	164.38	261.33
<b>Min.MCP (€/MWh)</b>	-29.60	-20.01	-7.00	-16.65	-12.45	2.00	86.61
	📈 17%	📈 14%	📉 -43%	➡️ 0%	📈 8%	📈 43%	📉 -51%
<b>Tot.Vol(GWh)</b>	5.64	6.42	3.69	3.71	4.02	5.74	2.78

### Trades by Order Type

Delivery Day		08.04	09.04	10.04	11.04	12.04	13.04	14.04	
<b>Ord Price Type</b>		<b>Sell &amp; Buy Trades in (GWh) per Price Type</b>							<b>(%)</b>
<b>PPT</b>	(S)	0.000	0.000	0.000	0.000	0.000	0.000	0.000	0.00%
<b>HBD</b>	(S)	1.055	2.885	0.803	0.785	1.311	1.800	0.620	44.54%
<b>BLK</b>	(S)	0.000	0.000	0.000	0.000	0.000	0.000	0.000	0.00%
<b>CPL</b>	(S)	1.764	0.327	1.044	1.070	0.700	1.070	0.772	55.46%
<b>PPT</b>	(B)	0.000	0.000	0.000	0.000	0.000	0.000	0.000	0.00%
<b>HBD</b>	(B)	1.549	1.103	1.109	1.370	1.149	1.419	1.141	81.93%
<b>BLK</b>	(B)	0.000	0.000	0.000	0.000	0.000	0.000	0.000	0.00%
<b>CPL</b>	(B)	1.270	2.109	0.738	0.485	0.862	1.450	0.252	18.07%
		<b>Sell &amp; Buy Orders Traded per Price Type</b>							<b>(%)</b>
<b>PPT</b>	(S)	0	0	0	0	0	0	0	0.00%
<b>HBD</b>	(S)	262	393	191	205	369	370	197	100.00%
<b>BLK</b>	(S)	0	0	0	0	0	0	0	0.00%
<b>PPT</b>	(B)	0	0	0	0	0	0	0	0.00%
<b>HBD</b>	(B)	353	526	494	633	571	448	369	100.00%
<b>BLK</b>	(B)	0	0	0	0	0	0	0	0.00%

- MCP** Market Clearing Price (€/MWh)
- PPT** Priority Price-Taking
- HBD** Hybrid
- BLK** Block
- CPL** Market Coupling Flow

### Trade's Volume Mix

	Sell - MWh	Buy - MWh	
<b>Lignite</b> (0.0%)	0	0	(0.0%)
<b>Crete Conv.</b> (0.0%)	0	0	(0.0%)
<b>Gas</b> (14.9%)	207	0	(0.0%)
<b>Hydro</b> (0.0%)	0	0	(0.0%)
<b>Imports</b> (55.5%)	772		
<b>RES</b> (12.3%)	171	652	(46.8%)
<b>Crete RES</b> (0.0%)	0	0	(0.0%)
<b>BESS</b> (0.0%)	0	0	(0.0%)
<b>HV Load</b> (1.7%)	23	0	(0.0%)
<b>MV Load</b> (0.0%)	0	28	(2.0%)
<b>LV Load</b> (14.3%)	199	461	(33.1%)
<b>Crete Load</b> (0.0%)	0	0	(0.0%)
<b>Pumping</b> (1.5%)	20	0	(0.0%)
<b>Exports</b>		252	(18.1%)
<b>Sys.Losses</b> (0.0%)	0	0	(0.0%)
<b>D/R Load</b> (0.0%)	0	0	(0.0%)

