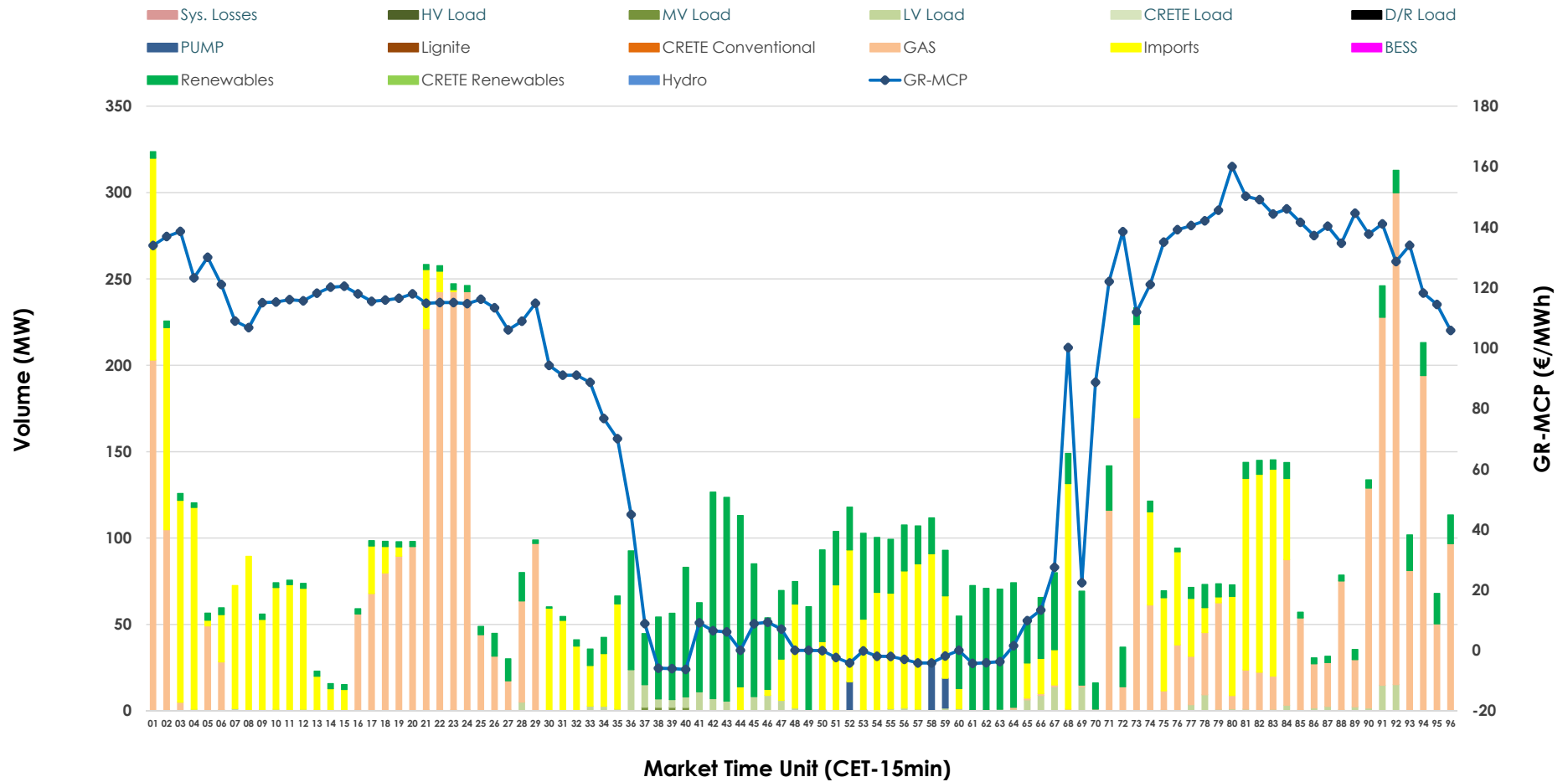


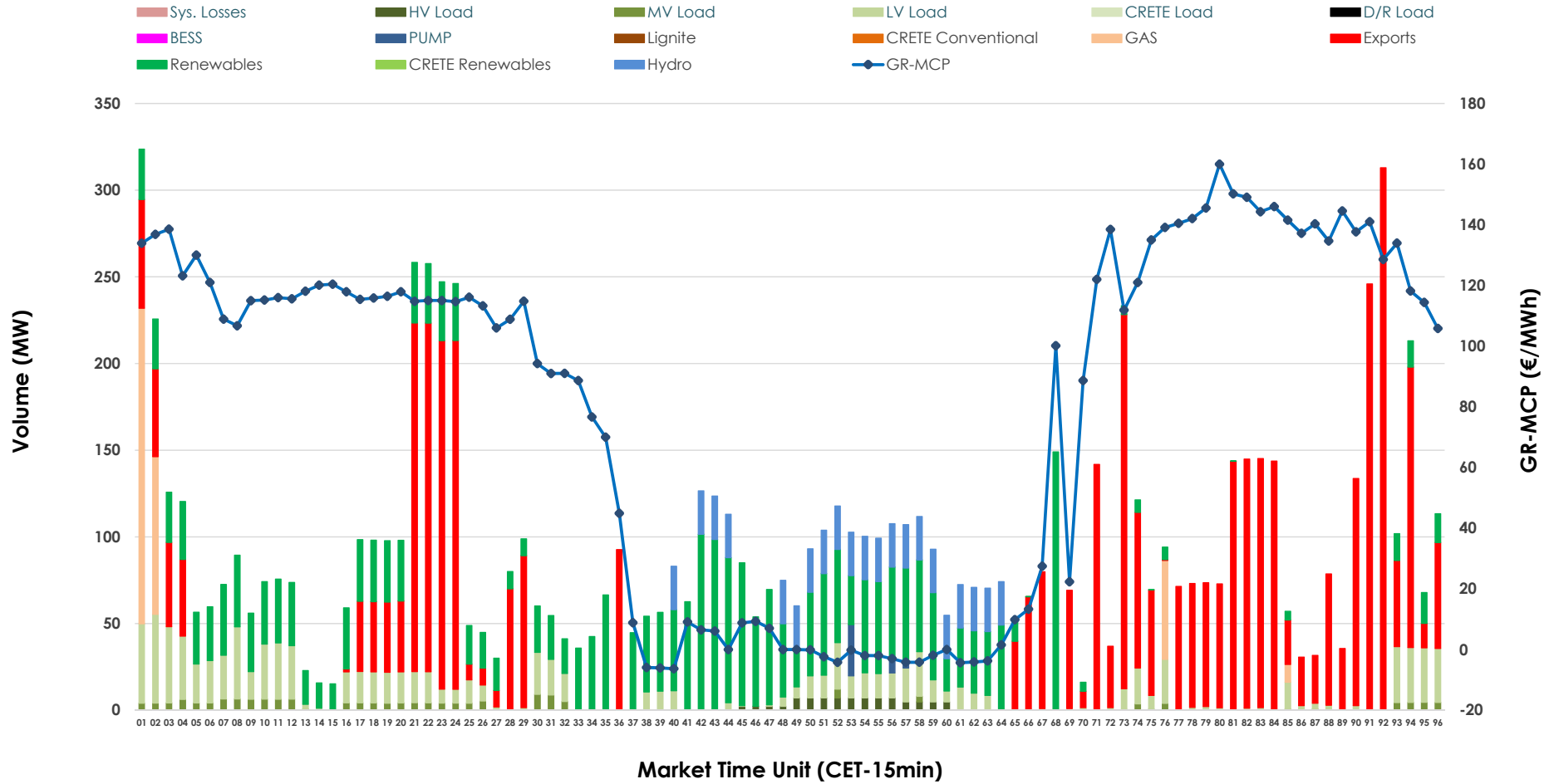


IDA '1' Market Outlook

12.04.2026 IDA '1' Market - Sell



12.04.2026 IDA '1' Market - Buy



GR Bidding Zone Weekly Figures

Delivery Day	06.04	07.04	08.04	09.04	10.04	11.04	12.04
	↑ 116%	↔ 24%	↓ -7%	↔ 20%	↓ 3%	↓ -11%	↓ -5%
Avg.MCP (€/MWh)	66.14	82.25	76.84	92.32	95.36	85.00	80.90
Max.MCP (€/MWh)	183.21	201.50	189.41	192.88	192.88	184.98	160.00
Min.MCP (€/MWh)	-34.93	-19.78	-17.84	-10.96	-4.00	-9.45	-6.33
	↓ -33%	↔ -1%	↓ -1%	↔ 12%	↓ -20%	↔ 9%	↔ 29%
Tot.Vol(GWh)	3.78	3.75	3.70	4.14	3.31	3.62	4.68

Trades by Order Type

Delivery Day		06.04	07.04	08.04	09.04	10.04	11.04	12.04	
Ord Price Type		Sell & Buy Trades in (GWh) per Price Type							(%)
PPT	(S)	0.000	0.000	0.000	0.000	0.000	0.000	0.000	0.00%
HBD	(S)	0.730	1.032	1.045	0.954	1.454	1.223	1.593	68.01%
BLK	(S)	0.000	0.000	0.000	0.000	0.000	0.000	0.000	0.00%
CPL	(S)	1.158	0.844	0.804	1.116	0.202	0.588	0.749	31.99%
PPT	(B)	0.000	0.000	0.000	0.000	0.000	0.000	0.000	0.00%
HBD	(B)	1.496	1.451	1.672	1.754	1.276	1.339	1.271	54.25%
BLK	(B)	0.000	0.000	0.000	0.000	0.000	0.000	0.000	0.00%
CPL	(B)	0.392	0.424	0.177	0.316	0.380	0.472	1.072	45.75%
		Sell & Buy Orders Traded per Price Type							(%)
PPT	(S)	0	0	0	0	0	0	0	0.00%
HBD	(S)	164	122	247	208	358	85	162	100.00%
BLK	(S)	0	0	0	0	0	0	0	0.00%
PPT	(B)	0	0	0	0	0	0	0	0.00%
HBD	(B)	449	865	778	840	502	670	451	100.00%
BLK	(B)	0	0	0	0	0	0	0	0.00%

- MCP** Market Clearing Price (€/MWh)
- PPT** Priority Price-Taking
- HBD** Hybrid
- BLK** Block
- CPL** Market Coupling Flow

Trade's Volume Mix

	Sell - MWh	Buy - MWh	
Lignite	0	0	(0.0%)
Crete Conv.	0	0	(0.0%)
Gas	981	85	(3.6%)
Hydro	0	131	(5.6%)
Imports	749		
RES	534	698	(29.8%)
Crete RES	0	0	(0.0%)
BESS	0	0	(0.0%)
HV Load	0	21	(0.9%)
MV Load	2	44	(1.9%)
LV Load	61	281	(12.0%)
Crete Load	0	0	(0.0%)
Pumping	16	10	(0.4%)
Exports		1,072	(45.8%)
Sys.Losses	0	0	(0.0%)
D/R Load	0	0	(0.0%)

