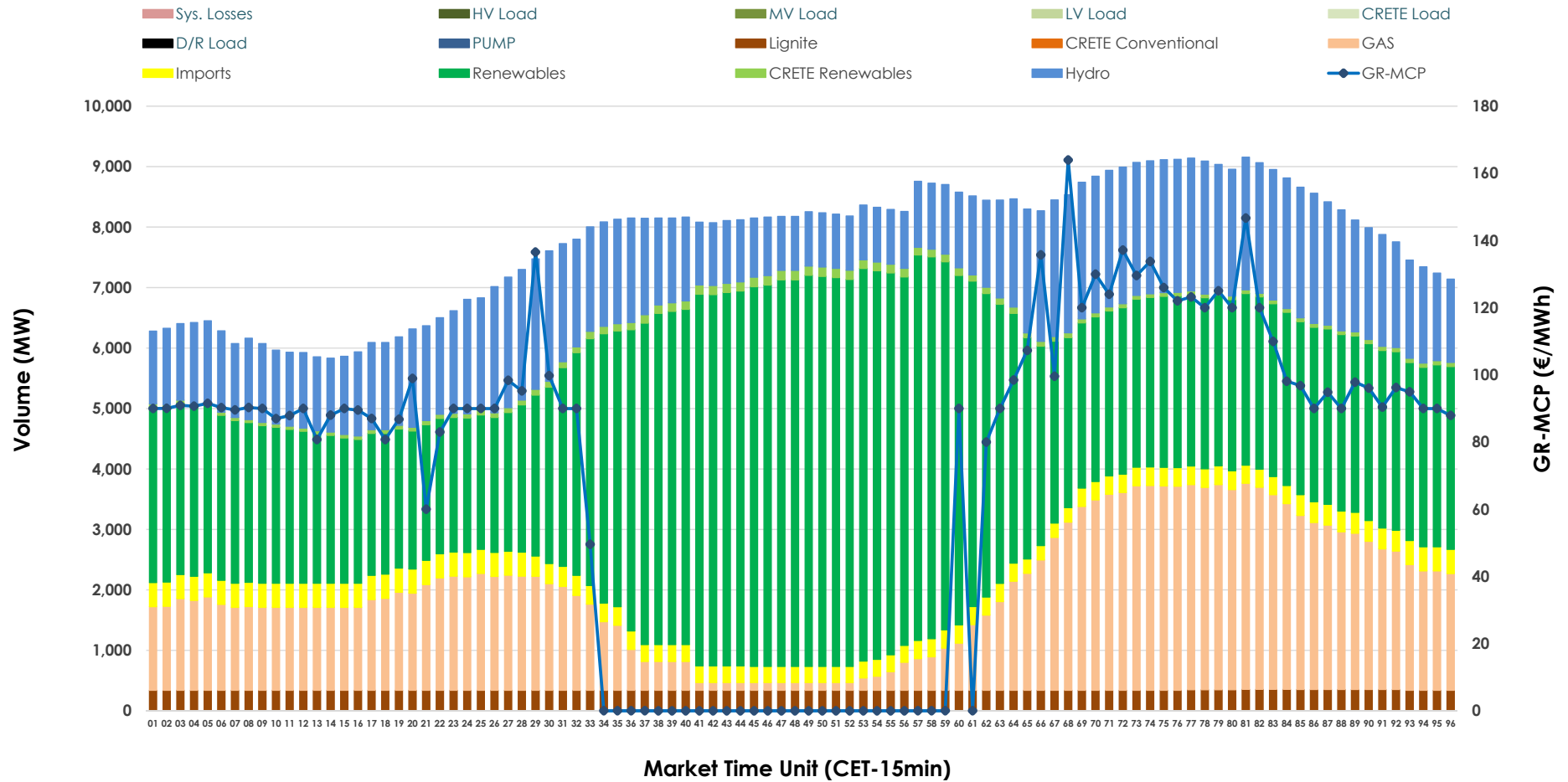


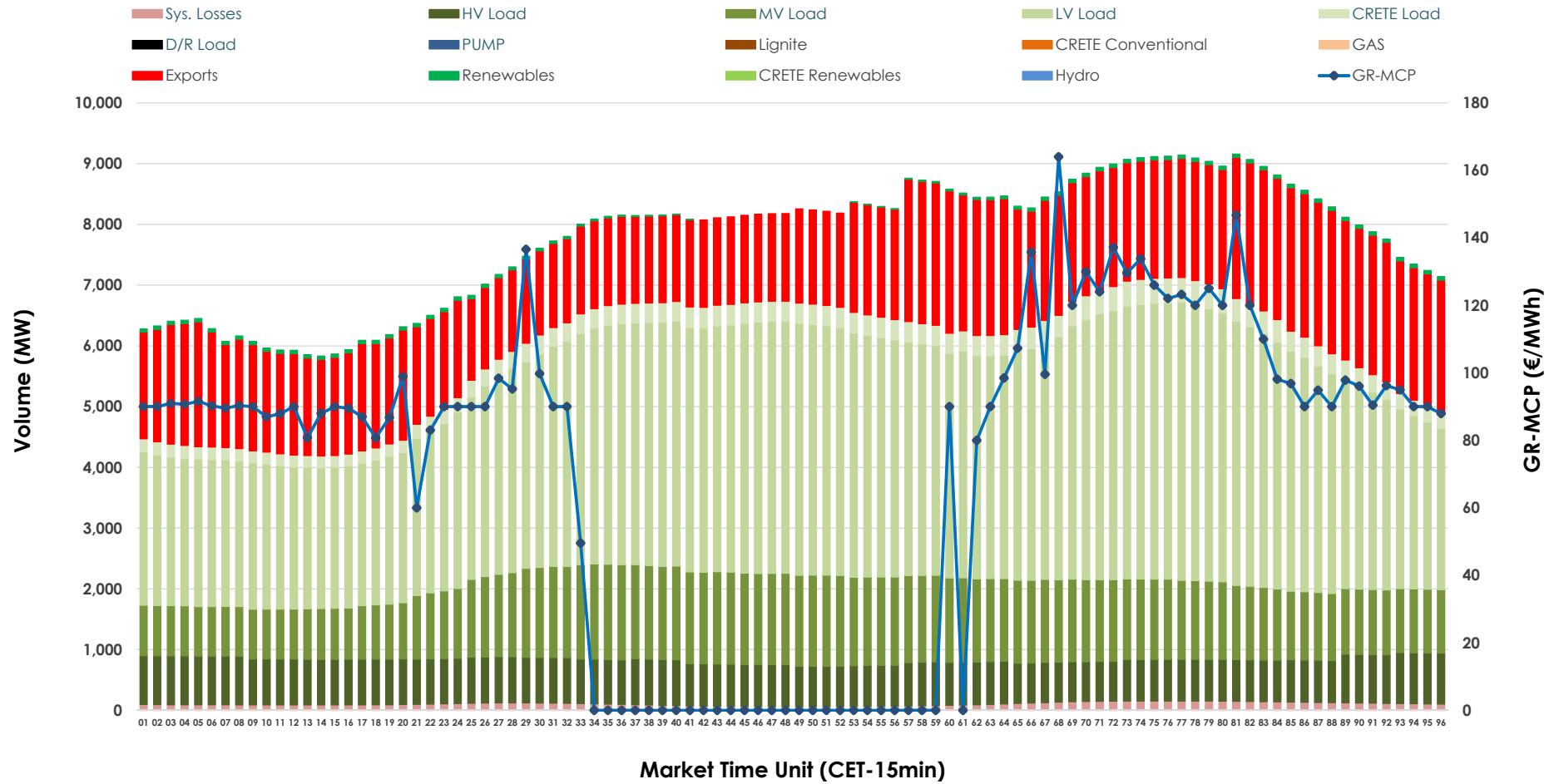


# Day-Ahead Market Outlook

16.02.2026 Day-Ahead Market - Sell



### 16.02.2026 Day-Ahead Market - Buy



### GR Bidding Zone Weekly Figures

Delivery Day	10.02	11.02	12.02	13.02	14.02	15.02	16.02
	👇 -10%	👇 -11%	👇 -19%	👆 9%	👇 -28%	👇 -59%	👆 166%
<b>Avg.MCP (€/MWh)</b>	117.00	103.57	83.74	91.43	65.70	27.10	71.96
<b>Max.MCP (€/MWh)</b>	183.80	145.00	113.10	141.81	116.13	96.30	163.98
<b>Min.MCP (€/MWh)</b>	89.31	35.29	0.01	0.01	0.01	-0.10	0.00
	👆 5%	👆 0%	👆 3%	👇 -4%	👇 -4%	👇 -10%	👆 7%
<b>Tot.Vol(GWh)</b>	407.28	409.25	420.46	404.98	386.76	348.20	372.50

### Trades by Order Type

Delivery Day		10.02	11.02	12.02	13.02	14.02	15.02	16.02	
<b>Ord Price Type</b>		<b>Sell &amp; Buy Trades in (GWh) per Price Type</b>							<b>(%)</b>
<b>PPT</b>	(S)	95.796	102.018	115.484	104.129	102.419	106.090	101.437	54.46%
<b>HBD</b>	(S)	69.091	66.237	72.762	68.013	69.070	60.657	65.090	34.95%
<b>BLK</b>	(S)	36.594	35.597	21.985	28.714	21.890	7.351	19.722	10.59%
<b>CPL</b>	(S)	2.161	0.771	0.000	1.634	0.000	0.000	0.000	0.00%
<b>PPT</b>	(B)	13.846	13.499	13.165	13.224	12.407	13.254	14.176	7.61%
<b>HBD</b>	(B)	150.538	150.234	150.839	146.580	137.891	127.444	137.125	73.62%
<b>BLK</b>	(B)	0.000	0.000	0.000	0.000	0.000	0.000	0.000	0.00%
<b>CPL</b>	(B)	39.257	40.890	46.227	42.686	43.080	33.399	34.948	18.76%
		<b>Sell &amp; Buy Orders Traded per Price Type</b>							<b>(%)</b>
<b>PPT</b>	(S)	2423	2522	2454	2309	2270	2169	2324	47.37%
<b>HBD</b>	(S)	2939	2839	2701	2811	2763	2249	2572	52.43%
<b>BLK</b>	(S)	8	10	13	11	9	3	10	0.20%
<b>PPT</b>	(B)	2234	2218	2237	2231	2341	2367	2366	36.93%
<b>HBD</b>	(B)	4029	4018	4097	4012	4210	4372	4040	63.07%
<b>BLK</b>	(B)	0	0	0	0	0	0	0	0.00%

**MCP** Market Clearing Price (€/MWh)  
**PPT** Priority Price-Taking  
**HBD** Hybrid  
**BLK** Block  
**CPL** Market Coupling Flow

### Trade's Volume Mix

		Sell - MWh	Buy - MWh	
<b>Lignite</b>	(4.4%)	8,209	0	(0.0%)
<b>Crete Conv.</b>	(0.0%)	0	0	(0.0%)
<b>Gas</b>	(21.3%)	39,607	0	(0.0%)
<b>Hydro</b>	(20.6%)	38,394	0	(0.0%)
<b>Imports</b>	(4.3%)	7,950		
<b>RES</b>	(48.3%)	89,948	958	(0.5%)
<b>Crete RES</b>	(1.1%)	2,139	0	(0.0%)
<b>HV Load</b>	(0.0%)	0	17,448	(9.4%)
<b>MV Load</b>	(0.0%)	0	29,766	(16.0%)
<b>LV Load</b>	(0.0%)	0	84,397	(45.3%)
<b>Crete Load</b>	(0.0%)	0	7,323	(3.9%)
<b>Pumping</b>	(0.0%)	0	0	(0.0%)
<b>Exports</b>			43,819	(23.5%)
<b>Sys.Losses</b>	(0.0%)	0	2,537	(1.4%)
<b>D/R Load</b>	(0.0%)	0	0	(0.0%)

