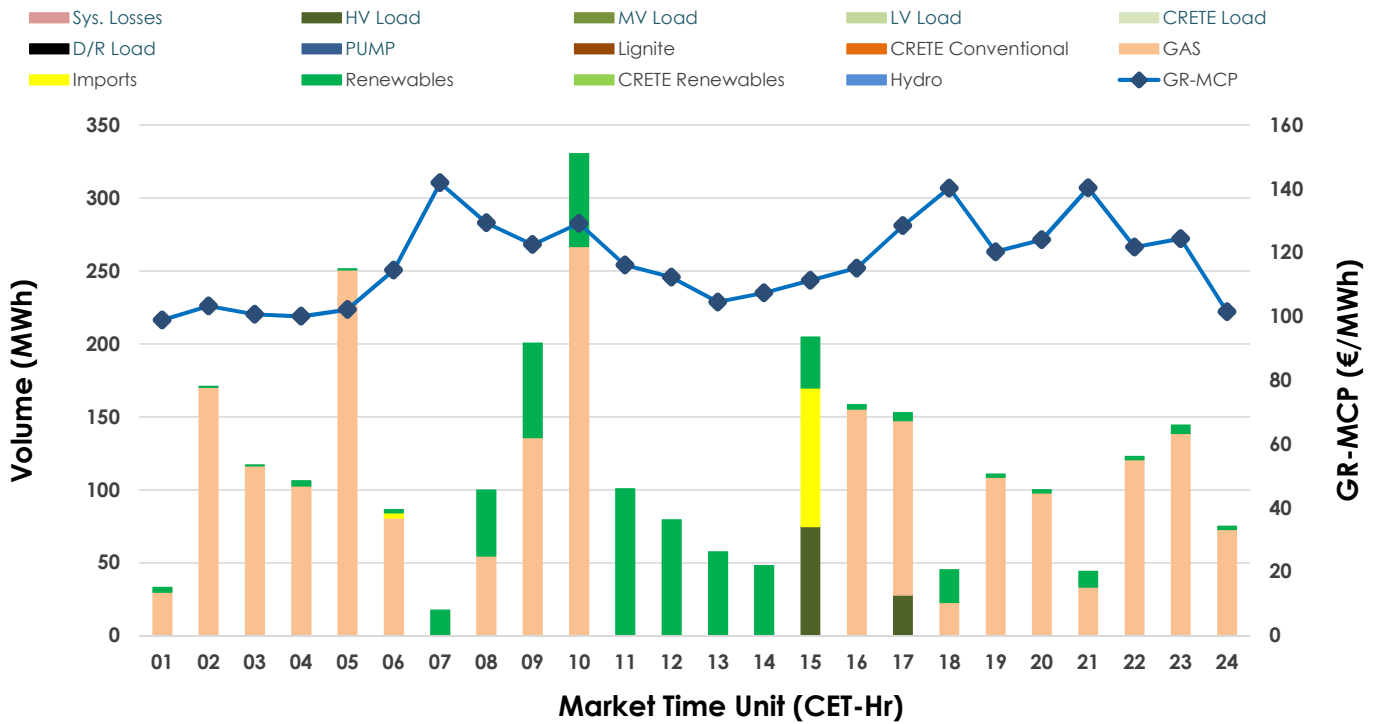
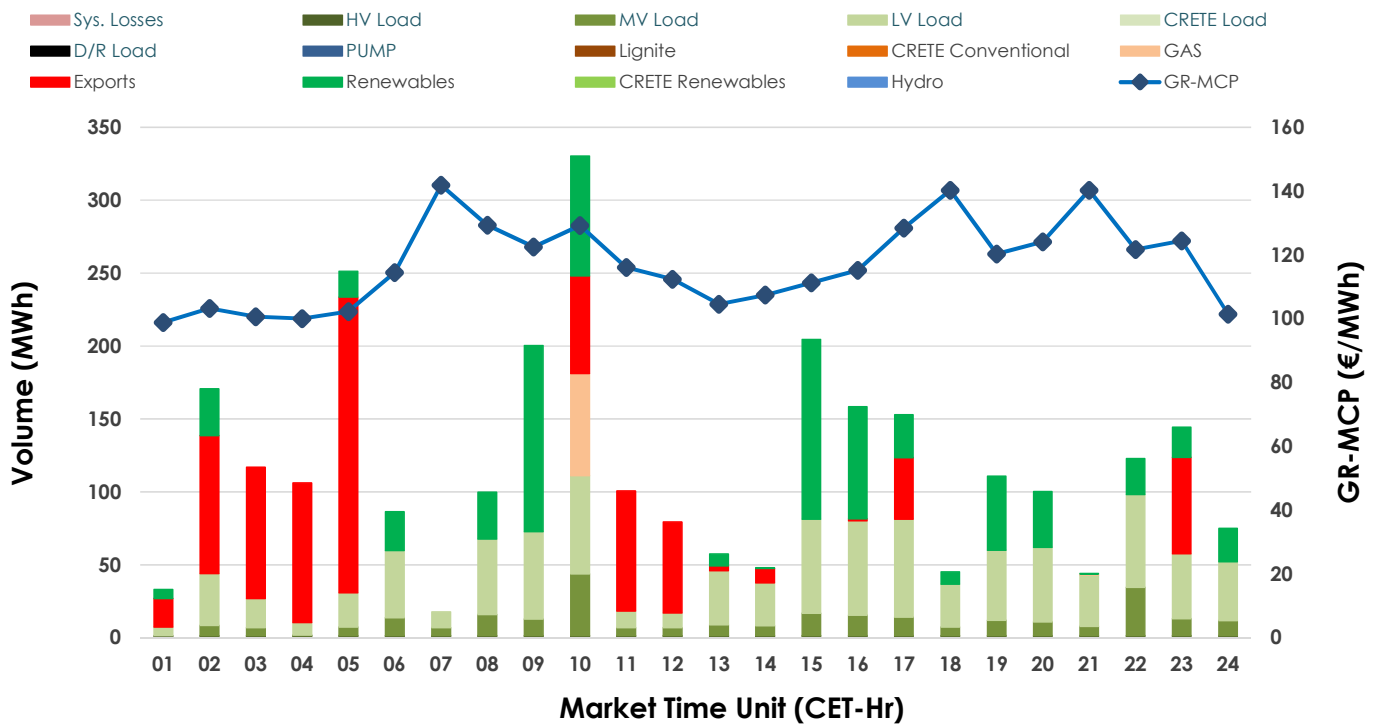


## 24.03.2025 IDA '1' Market - Sell



## 24.03.2025 IDA '1' Market - Buy



## GR Bidding Zone Weekly Figures

Delivery Day	18.03	19.03	20.03	21.03	22.03	23.03	24.03
	↗ 12%	↗ 2%	↗ 8%	↘ -6%	↘ -19%	↘ -18%	↗ 66%
Avg.MCP (€/MWh)	102.37	104.15	112.50	106.00	85.70	70.69	117.12
Max.MCP (€/MWh)	180.25	246.33	334.77	227.21	131.15	148.92	141.89
Min.MCP (€/MWh)	30.15	2.15	-0.48	1.20	13.03	13.98	98.89
	↘ -1%	↗ 68%	↗ 12%	↘ -43%	↘ -14%	↗ 56%	↗ 87%
Tot.Vol(GWh)	2.13	3.57	3.99	2.26	1.95	3.05	5.71

## Trades by Order Type

Delivery Day	18.03	19.03	20.03	21.03	22.03	23.03	24.03
Order P.T	Sell & Buy Trades in (GWh) per Price Type						
PPT (S)							
HBD (S)	1.066	1.050	1.294	0.964	0.969	1.525	2.758
BLK (S)							
CPL (S)		0.736	0.702	0.168	0.008		0.098
PPT (B)							
HBD (B)	1.066	1.567	1.909	1.011	0.916	1.525	2.020
BLK (B)							
CPL (B)		0.219	0.088	0.122	0.061		0.836
Order P.T	Sell & Buy Orders Traded per Price Type						
PPT (S)							
HBD (S)	117	91	78	110	130	143	127
BLK (S)							
PPT (B)							
HBD (B)	216	304	307	231	234	212	326
BLK (B)							

<b>MCP</b>	Market Clearing Price (€/MWh)
<b>PPT</b>	Priority Price-Taking
<b>HBD</b>	Hybrid
<b>BLK</b>	Block
<b>CPL</b>	Market Coupling Flow

## Trade's Volume Mix

	Sell - MWh	Buy - MWh	
Lignite	(0.0%) 0	0	(0.0%)
Crete Conv.	(0.0%) 0	0	(0.0%)
Gas	(72.8%) 2,081	71	(2.5%)
Hydro	(0.0%) 0	0	(0.0%)
Imports	(3.4%) 98		
RES	(20.1%) 574	728	(25.5%)
Crete RES	(0.0%) 0	0	(0.0%)
HV Load	(3.6%) 103	36	(1.3%)
MV Load	(0.0%) 0	259	(9.1%)
LV Load	(0.0%) 0	926	(32.4%)
Crete Load	(0.0%) 0	0	(0.0%)
Pumping	(0.0%) 0	0	(0.0%)
Exports		836	(29.3%)
Sys.Losses	(0.0%) 0	0	(0.0%)
D/R Load	(0.0%) 0	0	(0.0%)

