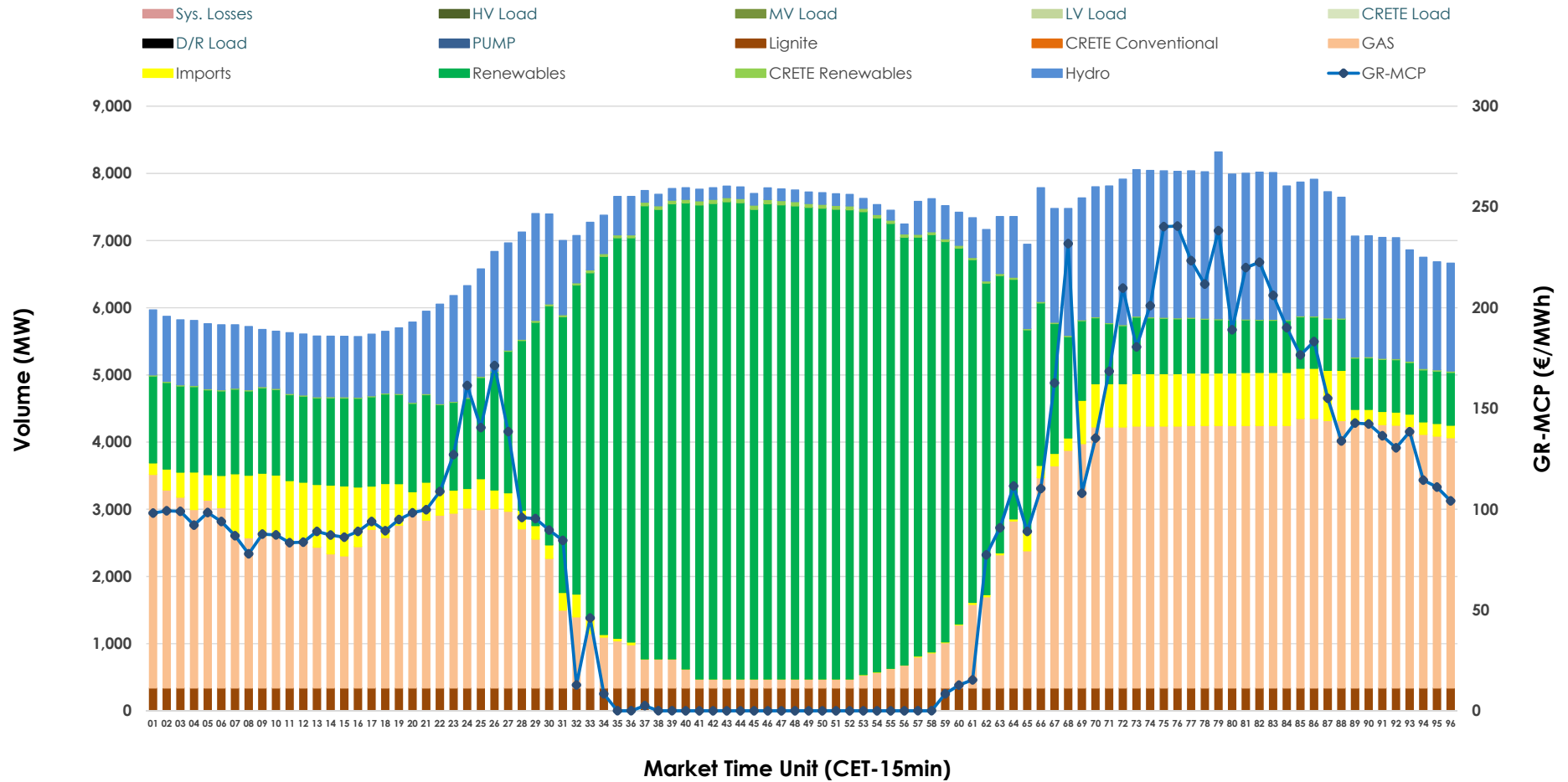


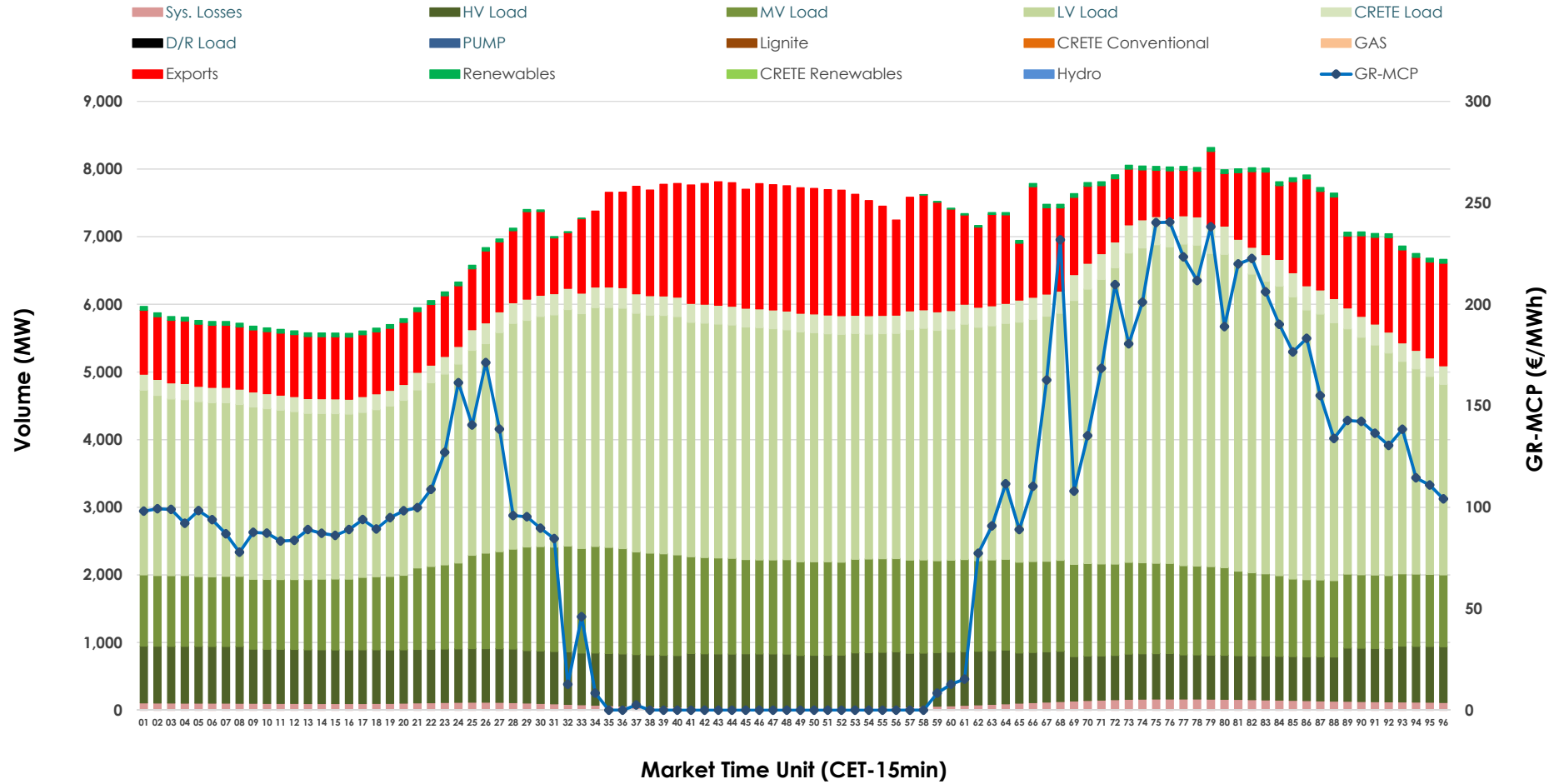


Day-Ahead Market Outlook

11.03.2026 Day-Ahead Market - Sell



11.03.2026 Day-Ahead Market - Buy



GR Bidding Zone Weekly Figures

Delivery Day	05.03	06.03	07.03	08.03	09.03	10.03	11.03
	↗ 3%	↘ -17%	↘ -4%	↘ -2%	↗ 1%	↗ 2%	↗ 10%
Avg.MCP (€/MWh)	105.57	87.16	83.96	82.31	82.94	84.90	93.35
Max.MCP (€/MWh)	217.72	203.10	168.31	172.04	247.48	253.89	240.49
Min.MCP (€/MWh)	0.79	0.00	-3.65	-1.83	-0.01	0.00	0.00
	↘ -2%	↘ -4%	↘ -2%	↘ -5%	↗ 7%	↘ -2%	↘ -8%
Tot.Vol(GWh)	393.19	375.71	368.18	351.54	377.07	369.77	340.80

Trades by Order Type

Delivery Day		05.03	06.03	07.03	08.03	09.03	10.03	11.03	
Ord Price Type		Sell & Buy Trades in (GWh) per Price Type							(%)
PPT	(S)	84.357	88.406	94.504	93.458	103.168	92.307	79.824	46.84%
HBD	(S)	68.571	70.555	63.366	60.465	72.209	67.169	58.548	34.36%
BLK	(S)	43.620	28.667	25.786	21.848	13.159	25.386	26.866	15.77%
CPL	(S)	0.050	0.226	0.435	0.000	0.000	0.022	5.164	3.03%
PPT	(B)	12.083	13.638	12.736	12.023	13.216	12.949	12.840	7.54%
HBD	(B)	144.972	144.877	133.811	126.370	140.244	142.529	138.311	81.17%
BLK	(B)	0.000	0.000	0.000	0.000	0.000	0.000	0.000	0.00%
CPL	(B)	39.542	29.338	37.545	37.378	35.075	29.406	19.251	11.30%
		Sell & Buy Orders Traded per Price Type							(%)
PPT	(S)	1990	2001	2063	2035	2104	2050	1996	40.64%
HBD	(S)	3040	2910	2647	2482	2558	2512	2905	59.15%
BLK	(S)	15	13	12	11	4	13	10	0.20%
PPT	(B)	2224	2268	2377	2257	2354	2339	2312	36.44%
HBD	(B)	4023	4030	3907	3760	4001	4076	4033	63.56%
BLK	(B)	0	0	0	0	0	0	0	0.00%

MCP Market Clearing Price (€/MWh)
PPT Priority Price-Taking
HBD Hybrid
BLK Block
CPL Market Coupling Flow

Trade's Volume Mix

		Sell - MWh	Buy - MWh	
Lignite	(4.8%)	8,160	0	(0.0%)
Crete Conv.	(0.0%)	0	0	(0.0%)
Gas	(31.3%)	53,279	0	(0.0%)
Hydro	(16.0%)	27,240	0	(0.0%)
Imports	(5.3%)	8,954		
RES	(42.3%)	72,077	853	(0.5%)
Crete RES	(0.4%)	691	0	(0.0%)
HV Load	(0.0%)	0	18,361	(10.8%)
MV Load	(0.0%)	0	30,683	(18.0%)
LV Load	(0.0%)	0	81,433	(47.8%)
Crete Load	(0.0%)	0	7,161	(4.2%)
Pumping	(0.0%)	0	0	(0.0%)
Exports			29,514	(17.3%)
Sys.Losses	(0.0%)	0	2,397	(1.4%)
D/R Load	(0.0%)	0	0	(0.0%)

