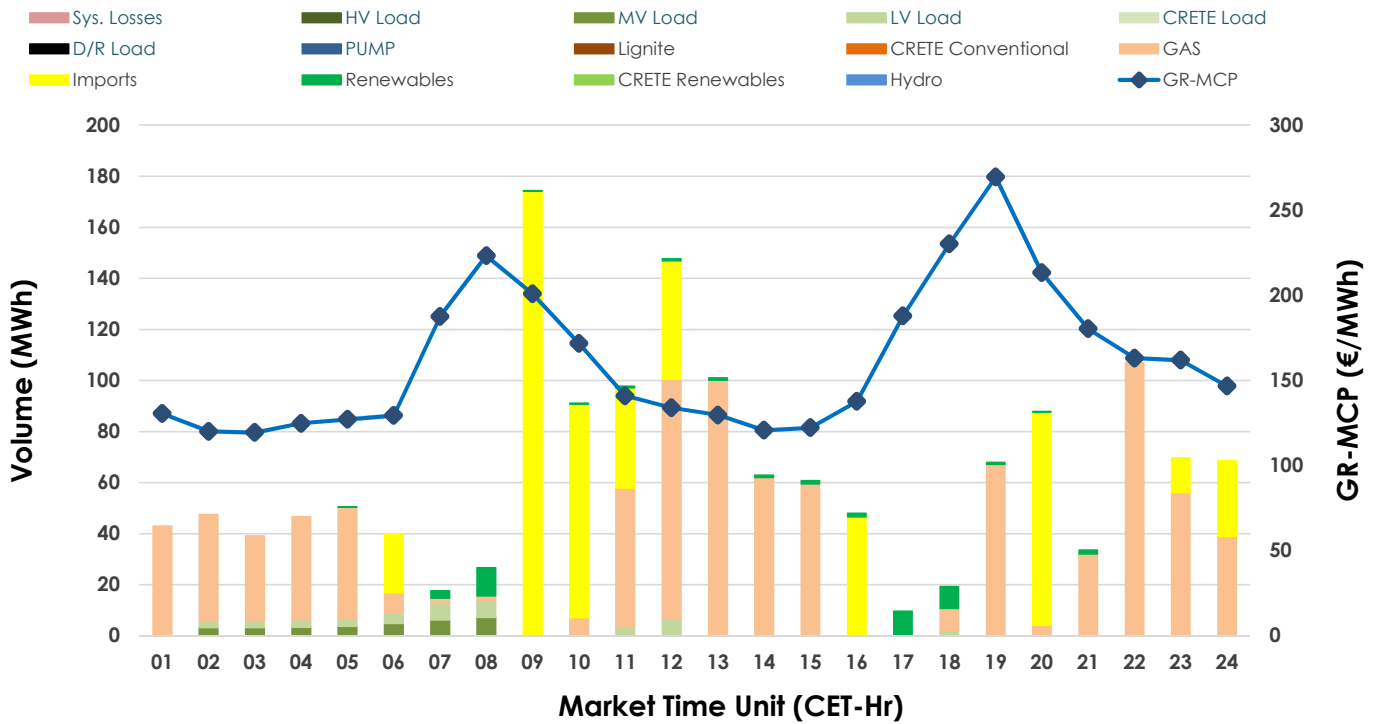
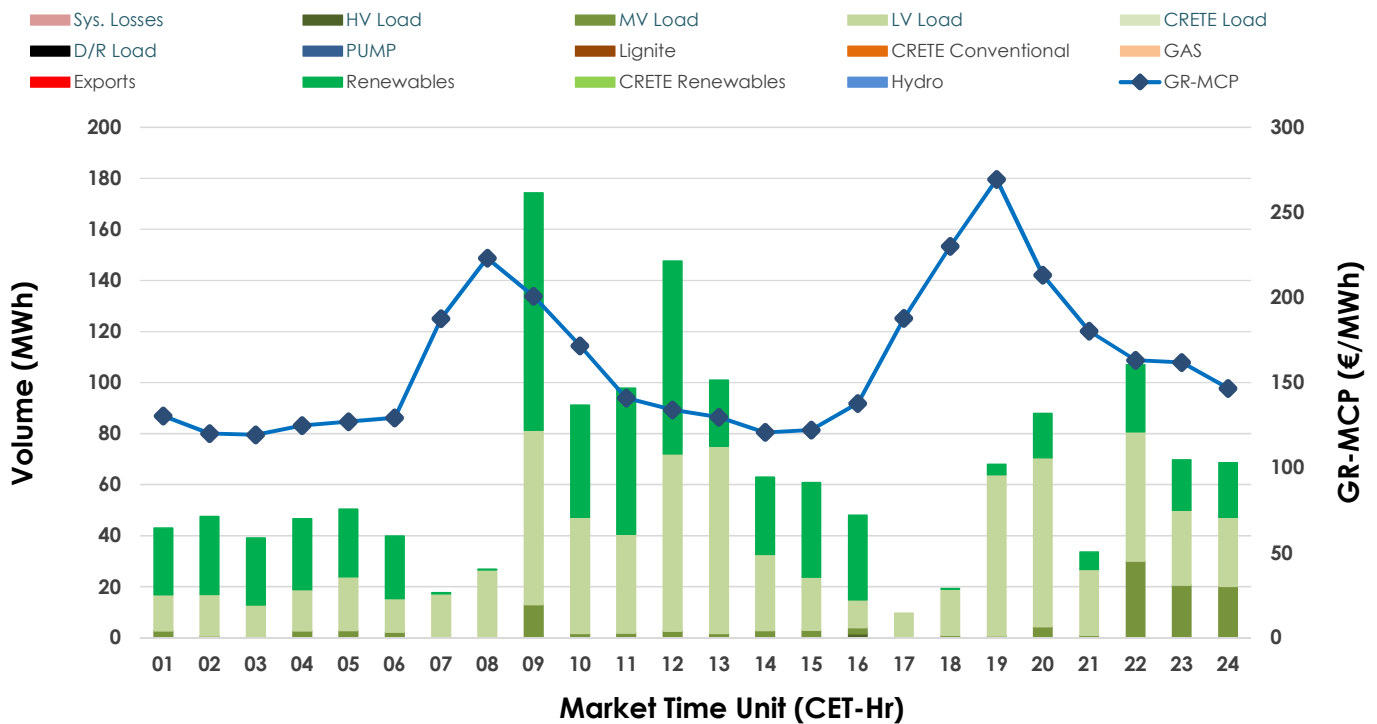


17.02.2025 IDA '2' Market - Sell



17.02.2025 IDA '2' Market - Buy



GR Bidding Zone Weekly Figures

Delivery Day	11.02	12.02	13.02	14.02	15.02	16.02	17.02
	↗11%	↗12%	↗16%	↘-18%	↘-18%	↗1%	↗14%
Avg.MCP (€/MWh)	159.42	178.01	206.93	170.49	140.50	141.98	161.34
Max.MCP (€/MWh)	246.37	369.61	366.14	308.36	182.86	178.85	269.42
Min.MCP (€/MWh)	104.07	119.66	133.77	123.60	116.18	117.07	119.34
	↘-30%	↘-19%	↗224%	↘-20%	↘-55%	↘-4%	↗61%
Tot.Vol(GWh)	2.10	1.70	5.52	4.44	2.02	1.94	3.12

Trades by Order Type

Delivery Day	11.02	12.02	13.02	14.02	15.02	16.02	17.02
Order P.T	Sell & Buy Trades in (GWh) per Price Type						
PPT (S)							
HBD (S)	1.041	0.851	2.761	2.166	1.000	0.970	1.018
BLK (S)							
CPL (S)	0.009			0.053	0.008		0.540
PPT (B)							
HBD (B)	0.909	0.851	2.761	0.813	0.882	0.970	1.558
BLK (B)							
CPL (B)	0.141			1.407	0.126		
Order P.T	Sell & Buy Orders Traded per Price Type						
PPT (S)							
HBD (S)	150	138	142	135	134	162	90
BLK (S)							
PPT (B)							
HBD (B)	143	135	171	162	180	212	252
BLK (B)							

MCP	Market Clearing Price (€/MWh)
PPT	Priority Price-Taking
HBD	Hybrid
BLK	Block
CPL	Market Coupling Flow

Trade's Volume Mix

	Sell - MWh	Buy - MWh	
Lignite	(0.0%) 0	0	(0.0%)
Crete Conv.	(0.0%) 0	0	(0.0%)
Gas	(58.1%) 906	0	(0.0%)
Hydro	(0.0%) 0	0	(0.0%)
Imports	(34.7%) 540		
RES	(2.6%) 41	653	(41.9%)
Crete RES	(0.0%) 0	0	(0.0%)
HV Load	(0.0%) 0	2	(0.1%)
MV Load	(2.0%) 31	119	(7.6%)
LV Load	(2.6%) 40	784	(50.3%)
Crete Load	(0.0%) 0	0	(0.0%)
Pumping	(0.0%) 0	0	(0.0%)
Exports		0	(0.0%)
Sys.Losses	(0.0%) 0	0	(0.0%)
D/R Load	(0.0%) 0	0	(0.0%)

