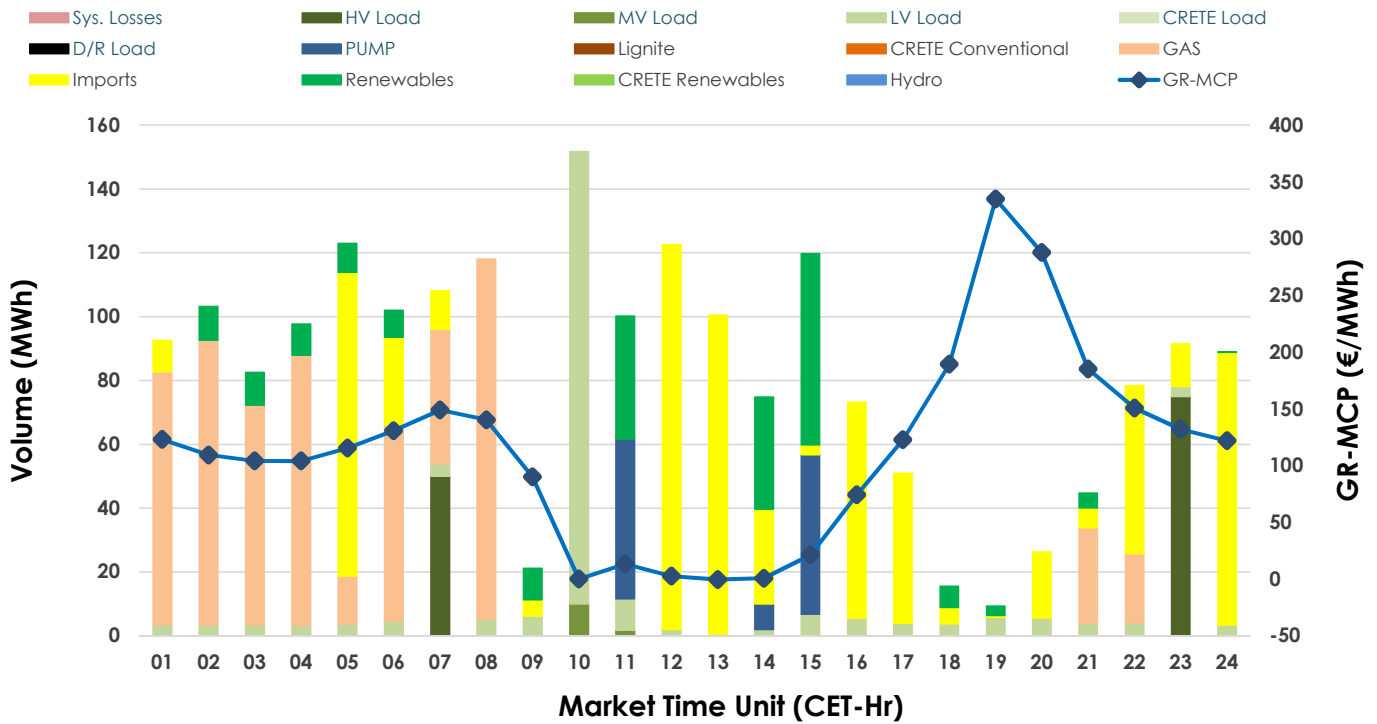
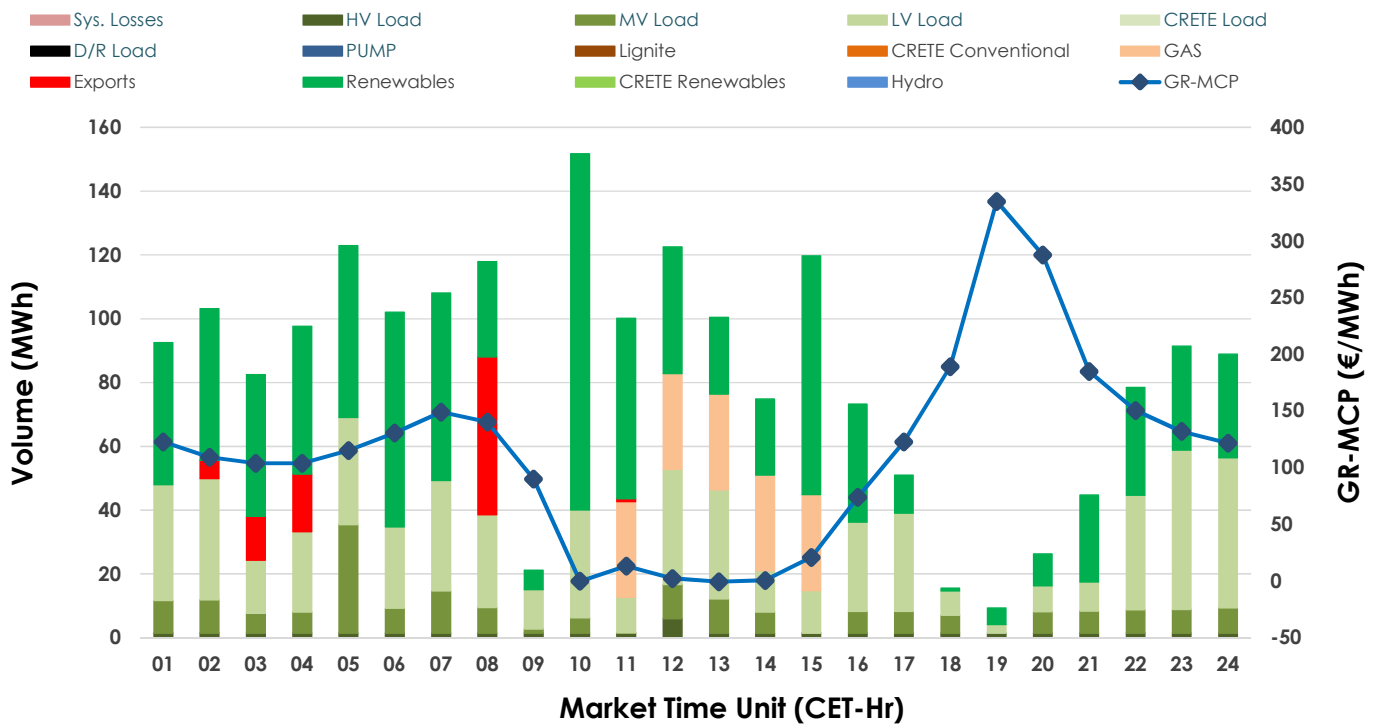


20.03.2025 IDA '1' Market - Sell



20.03.2025 IDA '1' Market - Buy



GR Bidding Zone Weekly Figures

Delivery Day	14.03	15.03	16.03	17.03	18.03	19.03	20.03
	↗ 6%	↘ -11%	↘ -6%	↗ 21%	↗ 12%	↗ 2%	↗ 8%
Avg.MCP (€/MWh)	89.29	79.89	75.40	91.52	102.37	104.15	112.50
Max.MCP (€/MWh)	151.77	144.90	156.26	170.58	180.25	246.33	334.77
Min.MCP (€/MWh)	7.79	2.00	4.95	25.00	30.15	2.15	-0.48
	↗ 42%	↘ -24%	↘ -35%	↗ 37%	↘ -1%	↗ 68%	↗ 12%
Tot.Vol(GWh)	3.23	2.44	1.58	2.16	2.13	3.57	3.99

Trades by Order Type

Delivery Day	14.03	15.03	16.03	17.03	18.03	19.03	20.03
Order P.T	Sell & Buy Trades in (GWh) per Price Type						
PPT (S)							
HBD (S)	1.617	1.222	0.788	1.081	1.066	1.050	1.294
BLK (S)							
CPL (S)						0.736	0.702
PPT (B)							
HBD (B)	1.587	1.222	0.788	1.081	1.066	1.567	1.909
BLK (B)							
CPL (B)	0.030					0.219	0.088
Order P.T	Sell & Buy Orders Traded per Price Type						
PPT (S)							
HBD (S)	138	119	88	112	117	91	78
BLK (S)							
PPT (B)							
HBD (B)	270	220	141	236	216	304	307
BLK (B)							

MCP	Market Clearing Price (€/MWh)
PPT	Priority Price-Taking
HBD	Hybrid
BLK	Block
CPL	Market Coupling Flow

Trade's Volume Mix

	Sell - MWh	Buy - MWh	
Lignite	(0.0%) 0	0	(0.0%)
Crete Conv.	(0.0%) 0	0	(0.0%)
Gas	(30.4%) 606	150	(7.5%)
Hydro	(0.0%) 0	0	(0.0%)
Imports	(35.2%) 702		
RES	(10.3%) 206	920	(46.1%)
Crete RES	(0.0%) 0	0	(0.0%)
HV Load	(6.3%) 125	40	(2.0%)
MV Load	(0.6%) 12	186	(9.3%)
LV Load	(11.9%) 238	612	(30.6%)
Crete Load	(0.0%) 0	0	(0.0%)
Pumping	(5.4%) 108	0	(0.0%)
Exports		88	(4.4%)
Sys.Losses	(0.0%) 0	0	(0.0%)
D/R Load	(0.0%) 0	0	(0.0%)

