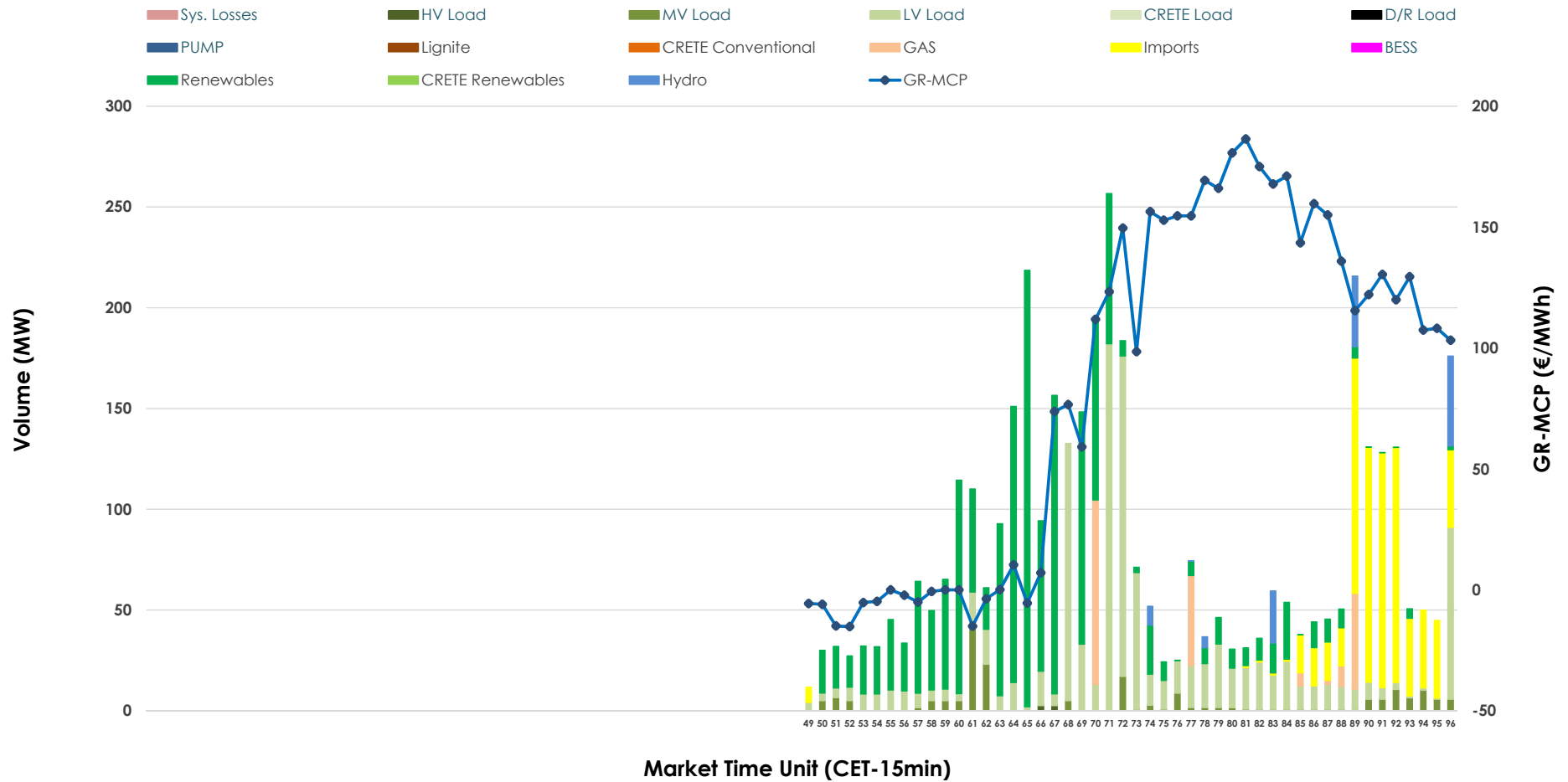


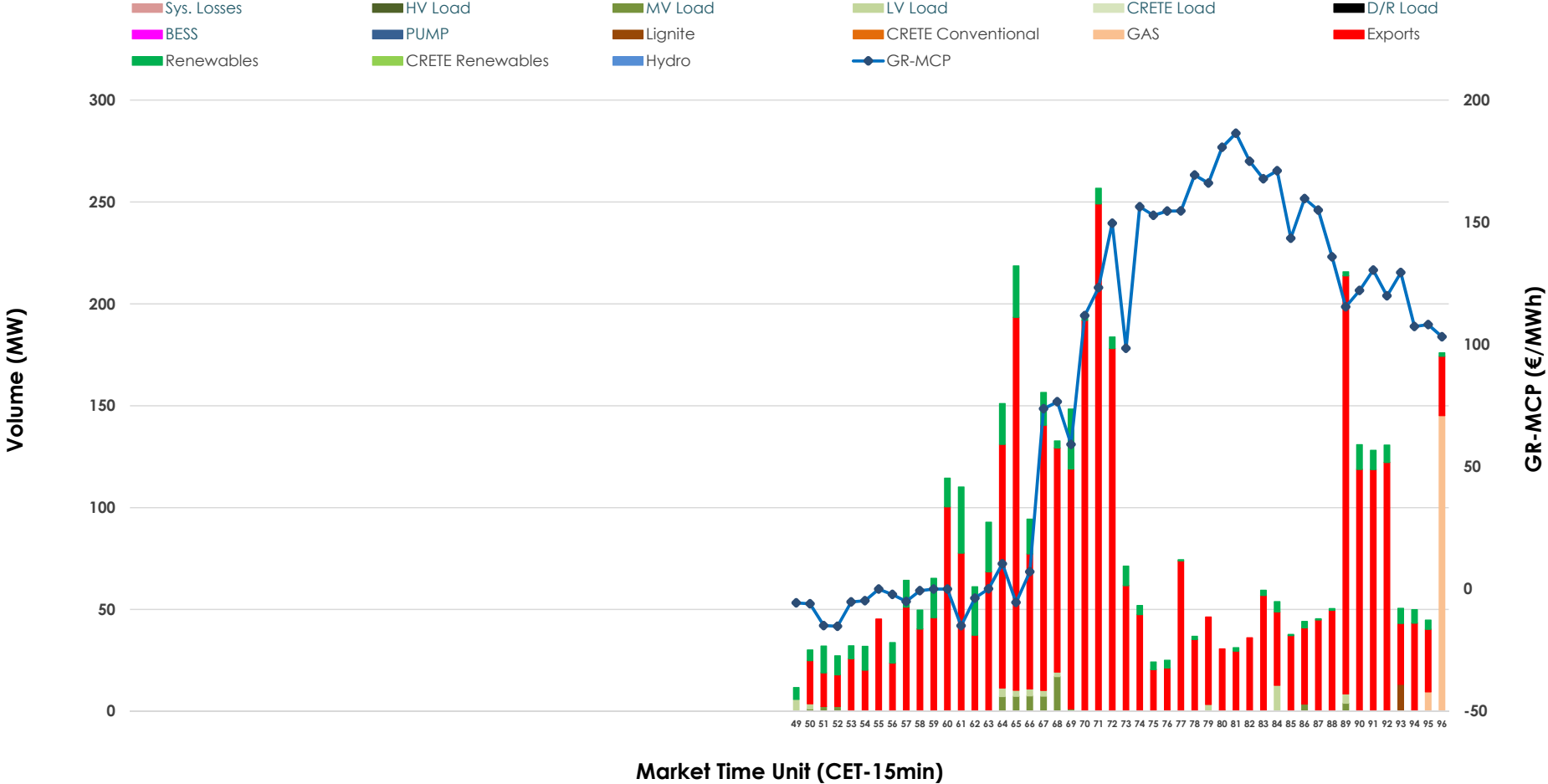


IDA '3' Market Outlook

09.04.2026 IDA '3' Market - Sell



09.04.2026 IDA '3' Market - Buy



GR Bidding Zone Weekly Figures

Delivery Day	03.04	04.04	05.04	06.04	07.04	08.04	09.04
	👉 -3%	👇 -65%	👇 -54%	👆 102%	👆 44%	👉 21%	👉 10%
Avg.MCP (€/MWh)	132.06	46.59	21.49	43.45	62.41	75.60	83.16
Max.MCP (€/MWh)	203.39	129.90	97.54	191.43	184.28	186.48	186.44
Min.MCP (€/MWh)	59.05	-11.64	-65.92	-123.91	-48.10	-20.01	-15.20
	👉 -17%	👉 -30%	👇 -69%	👆 115%	👉 -14%	👉 23%	👉 13%
Tot.Vol(GWh)	3.55	2.49	0.77	1.65	1.43	1.76	1.99

Trades by Order Type

Delivery Day	03.04	04.04	05.04	06.04	07.04	08.04	09.04	
Ord Price Type	Sell & Buy Trades in (GWh) per Price Type							(%)
PPT (S)	0.000	0.000	0.000	0.000	0.000	0.000	0.000	0.00%
HBD (S)	0.695	1.245	0.338	0.322	0.601	0.493	0.819	82.21%
BLK (S)	0.000	0.000	0.000	0.000	0.000	0.000	0.000	0.00%
CPL (S)	1.080	0.000	0.046	0.503	0.112	0.386	0.177	17.79%
PPT (B)	0.000	0.000	0.000	0.000	0.000	0.000	0.000	0.00%
HBD (B)	0.807	0.126	0.200	0.768	0.321	0.548	0.173	17.35%
BLK (B)	0.000	0.000	0.000	0.000	0.000	0.000	0.000	0.00%
CPL (B)	0.968	1.120	0.184	0.057	0.392	0.330	0.823	82.65%
Ord Price Type	Sell & Buy Orders Traded per Price Type							(%)
PPT (S)	0	0	0	0	0	0	0	0.00%
HBD (S)	309	206	130	65	141	206	257	100.00%
BLK (S)	0	0	0	0	0	0	0	0.00%
PPT (B)	0	0	0	0	0	0	0	0.00%
HBD (B)	283	112	130	197	112	154	112	100.00%
BLK (B)	0	0	0	0	0	0	0	0.00%

- MCP** Market Clearing Price (€/MWh)
- PPT** Priority Price-Taking
- HBD** Hybrid
- BLK** Block
- CPL** Market Coupling Flow

Trade's Volume Mix

	Sell - MWh	Buy - MWh	
Lignite (0.0%)	0	3	(0.3%)
Crete Conv. (0.0%)	0	0	(0.0%)
Gas (5.1%)	51	39	(3.9%)
Hydro (3.0%)	30	0	(0.0%)
Imports (17.8%)	177		
RES (40.7%)	406	104	(10.4%)
Crete RES (0.0%)	0	0	(0.0%)
BESS (0.0%)	0	0	(0.0%)
HV Load (0.1%)	1	0	(0.0%)
MV Load (4.9%)	49	16	(1.6%)
LV Load (28.3%)	282	12	(1.2%)
Crete Load (0.0%)	0	0	(0.0%)
Pumping (0.0%)	0	0	(0.0%)
Exports		823	(82.6%)
Sys.Losses (0.0%)	0	0	(0.0%)
D/R Load (0.0%)	0	0	(0.0%)

