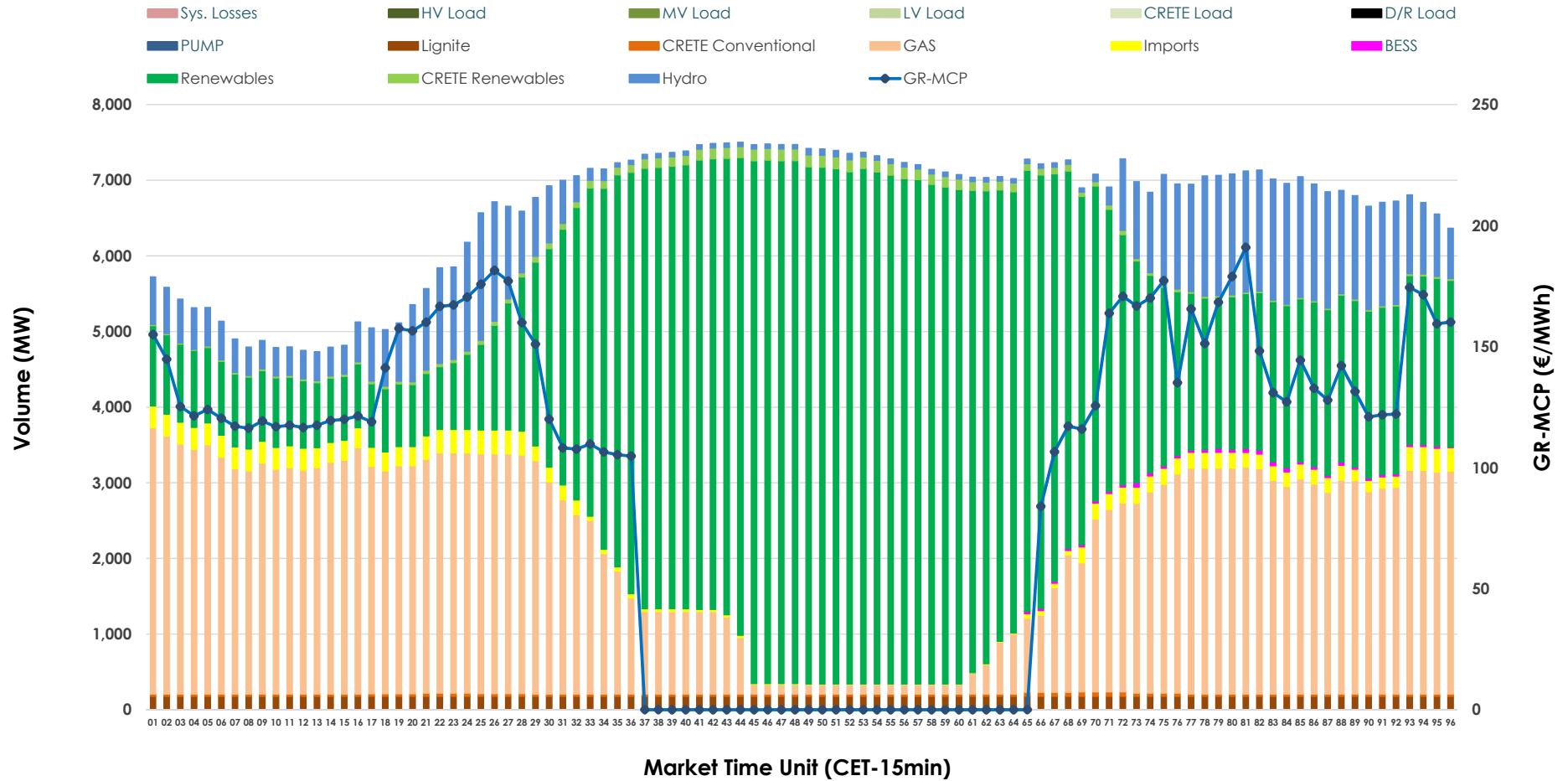


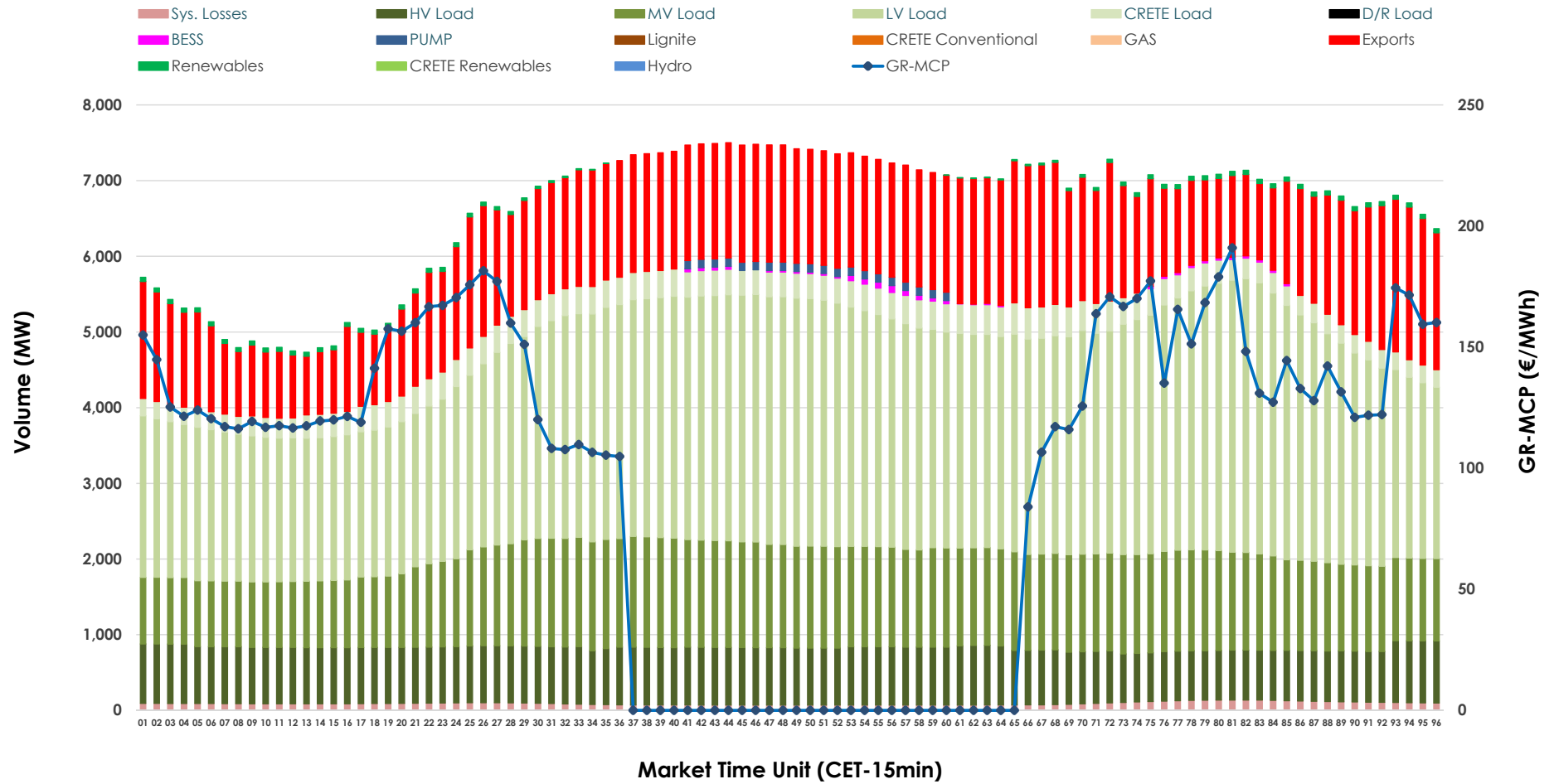


Day-Ahead Market Outlook

11.05.2026 Day-Ahead Market - Sell



11.05.2026 Day-Ahead Market - Buy



GR Bidding Zone Weekly Figures

Delivery Day	05.05	06.05	07.05	08.05	09.05	10.05	11.05
	➔ 0%	↗ 4%	↗ 17%	↗ 1%	↘ -11%	↘ -16%	↗ 6%
Avg.MCP (€/MWh)	98.73	103.01	120.39	122.10	109.01	91.94	97.12
Max.MCP (€/MWh)	257.05	205.60	176.89	180.08	220.88	208.60	191.00
Min.MCP (€/MWh)	-0.01	0.00	11.00	54.19	0.00	-0.02	0.00
	↘ -1%	↘ -3%	➔ 1%	↗ 3%	↗ 1%	↘ -9%	↗ 12%
Tot.Vol(GWh)	307.32	296.65	298.95	307.30	311.59	283.97	317.58

Trades by Order Type

Delivery Day		05.05	06.05	07.05	08.05	09.05	10.05	11.05	
Ord Price Type		Sell & Buy Trades in (GWh) per Price Type							(%)
PPT	(S)	56.144	52.370	54.293	56.340	59.265	60.371	67.164	42.30%
HBD	(S)	67.017	69.505	60.788	61.406	71.643	57.624	69.769	43.94%
BLK	(S)	29.691	25.317	34.136	30.821	24.868	23.989	21.856	13.76%
CPL	(S)	0.807	1.136	0.258	5.083	0.022	0.000	0.000	0.00%
PPT	(B)	14.815	15.325	15.121	15.159	15.045	14.673	14.748	9.29%
HBD	(B)	126.916	124.454	122.238	124.069	119.139	108.171	122.215	76.97%
BLK	(B)	0.000	0.000	0.000	0.000	0.000	0.000	0.000	0.00%
CPL	(B)	11.928	8.547	12.116	14.422	21.613	19.138	21.826	13.75%
		Sell & Buy Orders Traded per Price Type							(%)
PPT	(S)	1728	1667	1689	1702	1708	1716	1762	35.37%
HBD	(S)	3211	3430	3600	3461	3499	3114	3213	64.51%
BLK	(S)	10	9	13	10	10	9	6	0.12%
PPT	(B)	2296	2317	2324	2316	2392	2360	2322	37.43%
HBD	(B)	4157	3947	4001	4025	4063	3578	3881	62.57%
BLK	(B)	0	0	0	0	0	0	0	0.00%

- MCP** Market Clearing Price (€/MWh)
- PPT** Priority Price-Taking
- HBD** Hybrid
- BLK** Block
- CPL** Market Coupling Flow

Trade's Volume Mix

		Sell - MWh	Buy - MWh	
Lignite	(2.7%)	4,248	0	(0.0%)
Crete Conv.	(0.5%)	806	0	(0.0%)
Gas	(31.5%)	50,050	0	(0.0%)
Hydro	(9.4%)	14,897	0	(0.0%)
Imports	(2.5%)	3,911		
RES	(52.2%)	82,898	782	(0.5%)
Crete RES	(1.1%)	1,692	0	(0.0%)
BESS	(0.2%)	288	295	(0.2%)
HV Load	(0.0%)	0	17,641	(11.1%)
MV Load	(0.0%)	0	29,161	(18.4%)
LV Load	(0.0%)	0	66,284	(41.7%)
Crete Load	(0.0%)	0	7,745	(4.9%)
Pumping	(0.0%)	0	550	(0.3%)
Exports			34,146	(21.5%)
Sys.Losses	(0.0%)	0	2,185	(1.4%)
D/R Load	(0.0%)	0	0	(0.0%)

