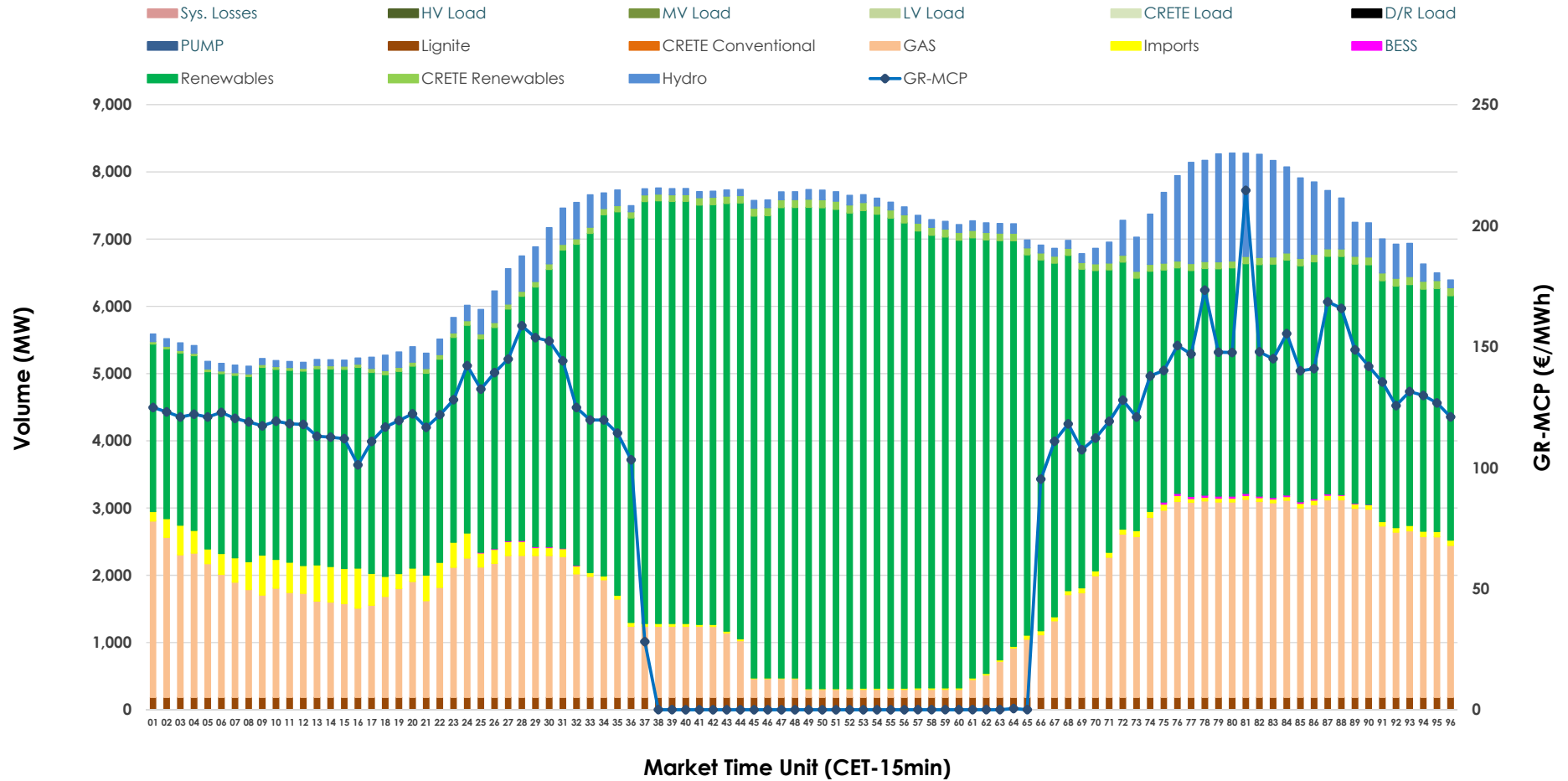


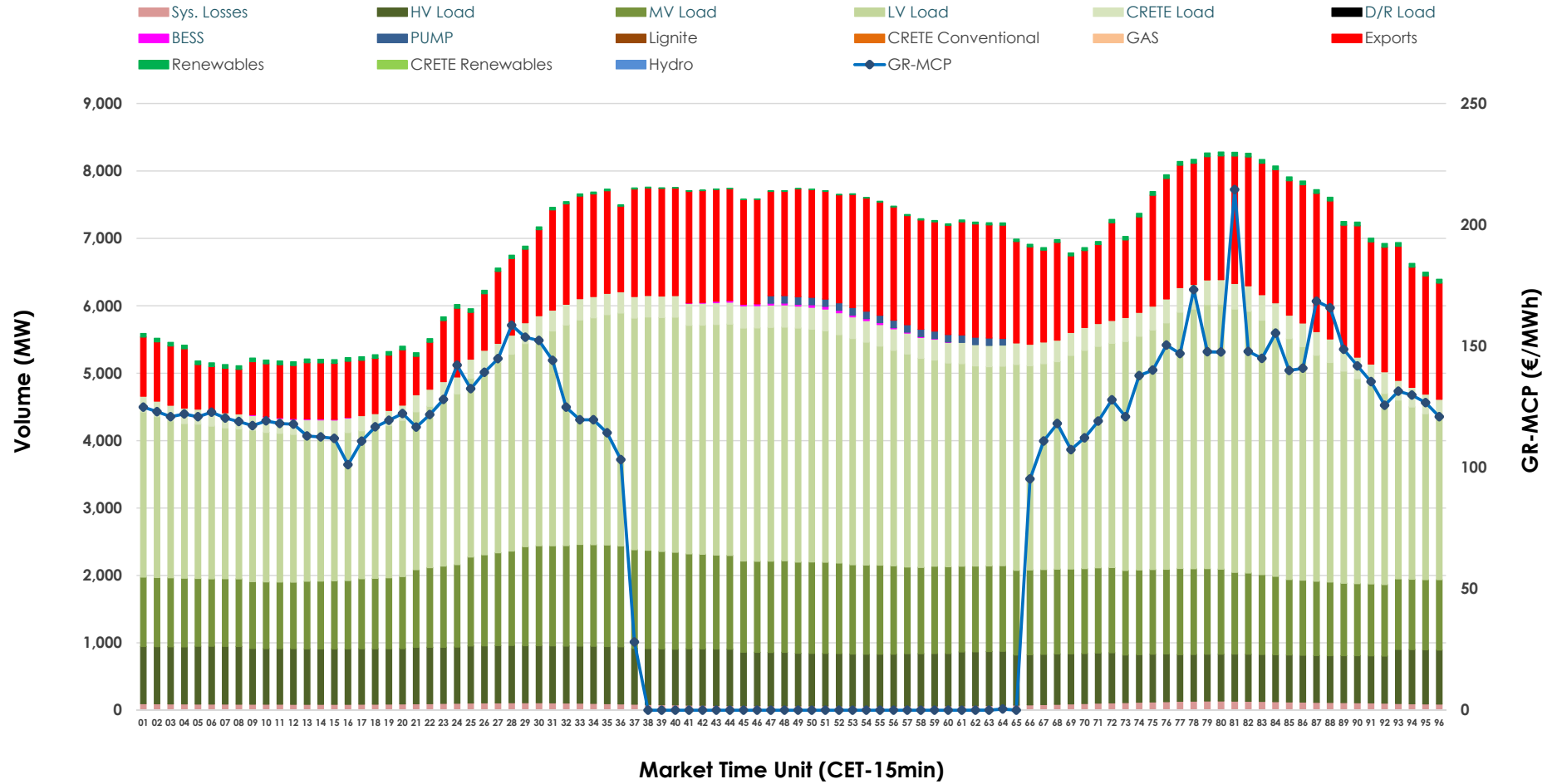


Day-Ahead Market Outlook

16.04.2026 Day-Ahead Market - Sell



16.04.2026 Day-Ahead Market - Buy



GR Bidding Zone Weekly Figures

Delivery Day	10.04	11.04	12.04	13.04	14.04	15.04	16.04
	↗ 1%	↘ -8%	↘ -9%	↗ 13%	↗ 47%	↘ -5%	↘ -27%
Avg.MCP (€/MWh)	95.30	87.39	79.79	90.06	132.81	125.87	91.60
Max.MCP (€/MWh)	195.45	187.36	157.05	167.43	245.16	176.29	214.54
Min.MCP (€/MWh)	-11.00	0.00	-0.41	0.00	15.01	64.00	0.00
	↘ -5%	↘ -16%	↘ -4%	↗ 9%	↗ 17%	↗ 5%	↗ 6%
Tot.Vol(GWh)	293.32	245.55	234.70	254.95	298.65	312.79	331.04

Trades by Order Type

Delivery Day		10.04	11.04	12.04	13.04	14.04	15.04	16.04	
Ord Price Type		Sell & Buy Trades in (GWh) per Price Type							(%)
PPT	(S)	45.843	36.771	39.180	44.572	44.451	45.887	64.098	38.73%
HBD	(S)	63.588	51.590	49.183	54.680	66.771	65.234	74.728	45.15%
BLK	(S)	27.799	23.858	17.179	21.227	33.965	35.606	24.879	15.03%
CPL	(S)	9.432	10.557	11.806	6.996	4.140	9.669	1.814	1.10%
PPT	(B)	14.353	13.243	12.221	12.074	12.075	12.730	13.676	8.26%
HBD	(B)	117.012	106.422	96.846	104.111	127.172	133.448	134.083	81.01%
BLK	(B)	0.000	0.000	0.000	0.000	0.000	0.000	0.000	0.00%
CPL	(B)	15.297	3.111	8.282	11.289	10.080	10.218	17.760	10.73%
		Sell & Buy Orders Traded per Price Type							(%)
PPT	(S)	1489	1463	1465	1461	1495	1488	1493	34.55%
HBD	(S)	2818	2888	2576	2768	3229	3247	2815	65.15%
BLK	(S)	13	12	12	13	19	16	13	0.30%
PPT	(B)	2358	2369	2374	2349	2309	2317	2353	35.96%
HBD	(B)	4151	4083	4193	4291	4088	4131	4190	64.04%
BLK	(B)	0	0	0	0	0	0	0	0.00%

MCP Market Clearing Price (€/MWh)
PPT Priority Price-Taking
HBD Hybrid
BLK Block
CPL Market Coupling Flow

Trade's Volume Mix

		Sell - MWh	Buy - MWh	
Lignite	(2.7%)	4,392	0	(0.0%)
Crete Conv.	(0.0%)	0	0	(0.0%)
Gas	(23.4%)	38,670	0	(0.0%)
Hydro	(5.4%)	8,948	0	(0.0%)
Imports	(2.1%)	3,406		
RES	(65.1%)	107,780	901	(0.5%)
Crete RES	(1.3%)	2,204	0	(0.0%)
BESS	(0.1%)	119	139	(0.1%)
HV Load	(0.0%)	0	18,917	(11.4%)
MV Load	(0.0%)	0	29,513	(17.8%)
LV Load	(0.0%)	0	72,544	(43.8%)
Crete Load	(0.0%)	0	7,239	(4.4%)
Pumping	(0.0%)	0	492	(0.3%)
Exports			33,516	(20.2%)
Sys.Losses	(0.0%)	0	2,258	(1.4%)
D/R Load	(0.0%)	0	0	(0.0%)

