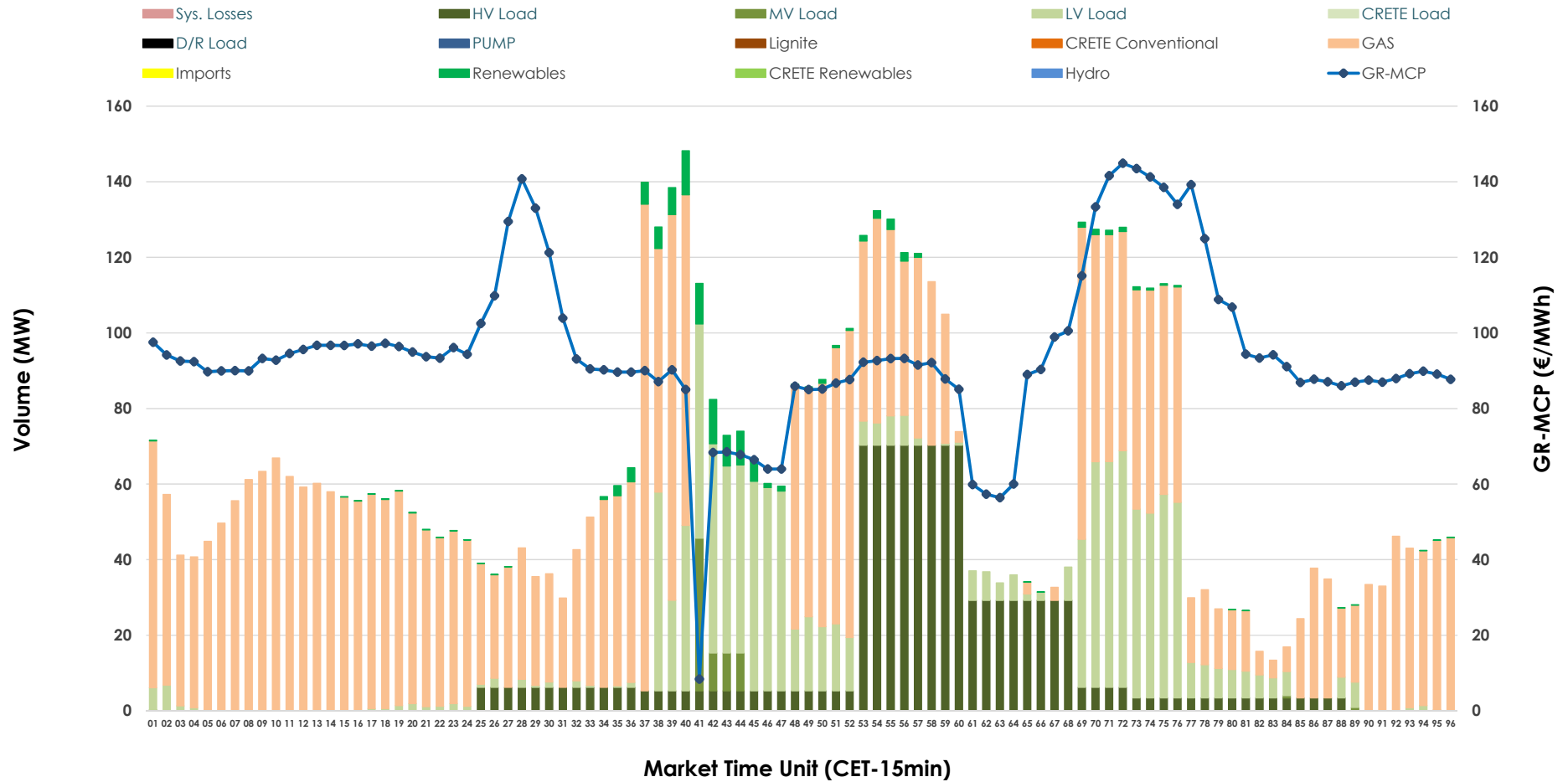


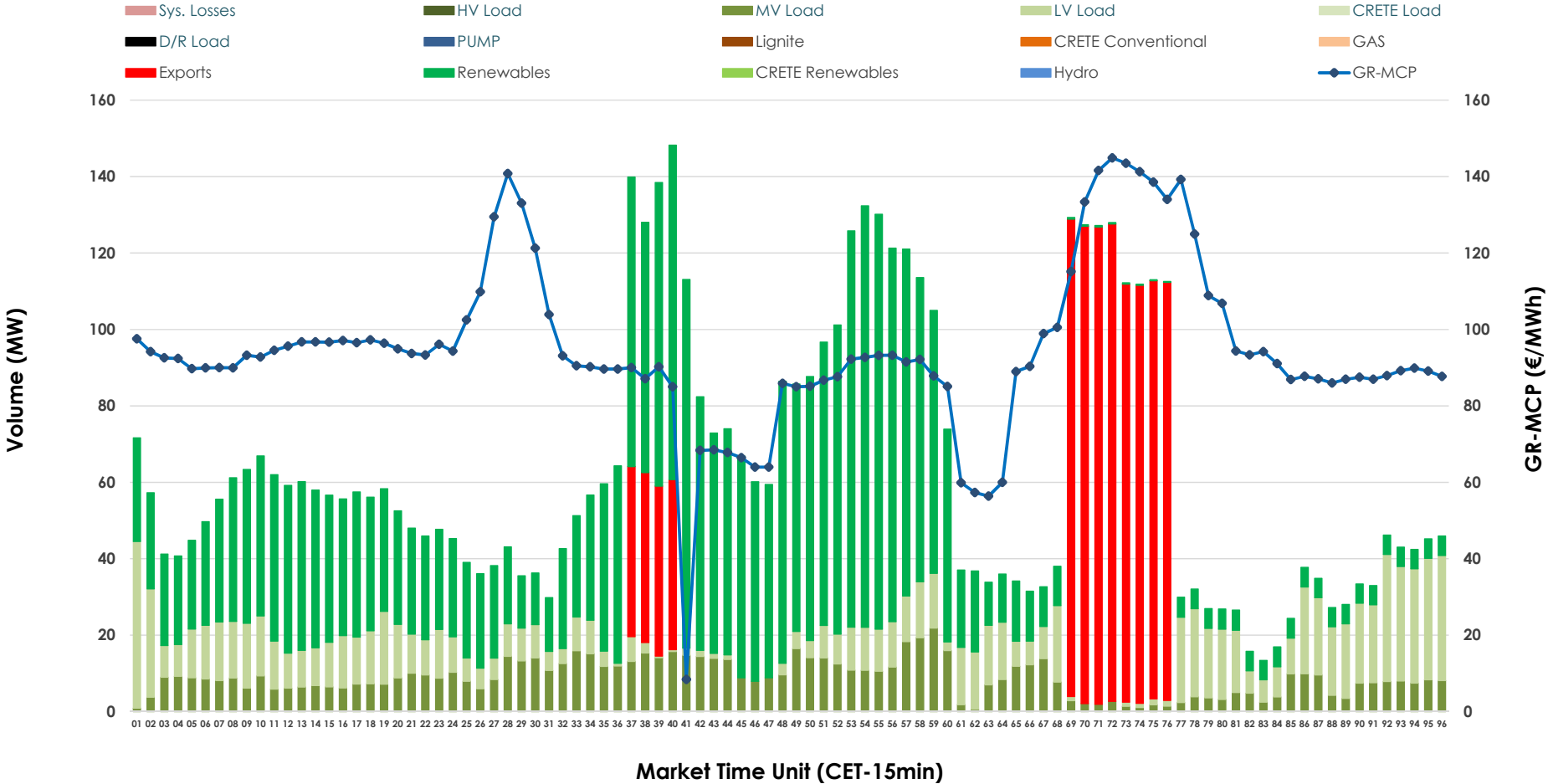


# IDA '1' Market Outlook

06.02.2026 IDA '1' Market - Sell



### 06.02.2026 IDA '1' Market - Buy



### GR Bidding Zone Weekly Figures

Delivery Day	31.01	01.02	02.02	03.02	04.02	05.02	06.02
	↗ 6%	↗ 1%	↗ 18%	→ 0%	↘ -23%	↗ 9%	↘ -5%
<b>Avg.MCP (€/MWh)</b>	98.89	100.31	118.10	118.41	90.74	99.13	94.63
<b>Max.MCP (€/MWh)</b>	152.60	143.74	251.72	216.88	141.94	158.84	144.90
<b>Min.MCP (€/MWh)</b>	43.71	60.00	80.04	81.53	24.58	57.50	8.40
	↘ -71%	↗ 58%	↘ -36%	↗ 38%	↗ 12%	↗ 9%	↘ -26%
<b>Tot.Vol(GWh)</b>	2.46	3.89	2.48	3.43	3.83	4.16	3.09

### Trades by Order Type

Delivery Day		31.01	01.02	02.02	03.02	04.02	05.02	06.02	
<b>Ord Price Type</b>		<b>Sell &amp; Buy Trades in (GWh) per Price Type</b>							<b>(%)</b>
<b>PPT</b>	(S)	0.000	0.000	0.000	0.000	0.000	0.000	0.000	0.00%
<b>HBD</b>	(S)	1.076	1.868	0.922	1.212	1.828	1.758	1.546	100.00%
<b>BLK</b>	(S)	0.000	0.000	0.000	0.000	0.000	0.000	0.000	0.00%
<b>CPL</b>	(S)	0.156	0.077	0.320	0.501	0.088	0.324	0.000	0.00%
<b>PPT</b>	(B)	0.000	0.000	0.000	0.000	0.000	0.000	0.000	0.00%
<b>HBD</b>	(B)	1.033	1.156	1.163	1.262	1.784	2.043	1.267	81.96%
<b>BLK</b>	(B)	0.000	0.000	0.000	0.000	0.000	0.000	0.000	0.00%
<b>CPL</b>	(B)	0.200	0.789	0.079	0.451	0.132	0.039	0.279	18.04%
		<b>Sell &amp; Buy Orders Traded per Price Type</b>							<b>(%)</b>
<b>PPT</b>	(S)	0	0	0	0	0	0	0	0.00%
<b>HBD</b>	(S)	148	73	81	124	273	226	242	100.00%
<b>BLK</b>	(S)	0	0	0	0	0	0	0	0.00%
<b>PPT</b>	(B)	0	0	0	0	0	0	0	0.00%
<b>HBD</b>	(B)	642	726	732	920	1081	900	678	100.00%
<b>BLK</b>	(B)	0	0	0	0	0	0	0	0.00%

**MCP** Market Clearing Price (€/MWh)  
**PPT** Priority Price-Taking  
**HBD** Hybrid  
**BLK** Block  
**CPL** Market Coupling Flow

### Trade's Volume Mix

	Sell - MWh	Buy - MWh	
<b>Lignite</b> (0.0%)	0	0	(0.0%)
<b>Crete Conv.</b> (0.0%)	0	0	(0.0%)
<b>Gas</b> (61.2%)	946	0	(0.0%)
<b>Hydro</b> (0.0%)	0	0	(0.0%)
<b>Imports</b> (0.0%)	0		
<b>RES</b> (1.7%)	27	788	(51.0%)
<b>Crete RES</b> (0.0%)	0	0	(0.0%)
<b>HV Load</b> (16.7%)	259	0	(0.0%)
<b>MV Load</b> (1.2%)	18	212	(13.7%)
<b>LV Load</b> (19.2%)	296	267	(17.3%)
<b>Crete Load</b> (0.0%)	0	0	(0.0%)
<b>Pumping</b> (0.0%)	0	0	(0.0%)
<b>Exports</b>		279	(18.0%)
<b>Sys.Losses</b> (0.0%)	0	0	(0.0%)
<b>D/R Load</b> (0.0%)	0	0	(0.0%)

