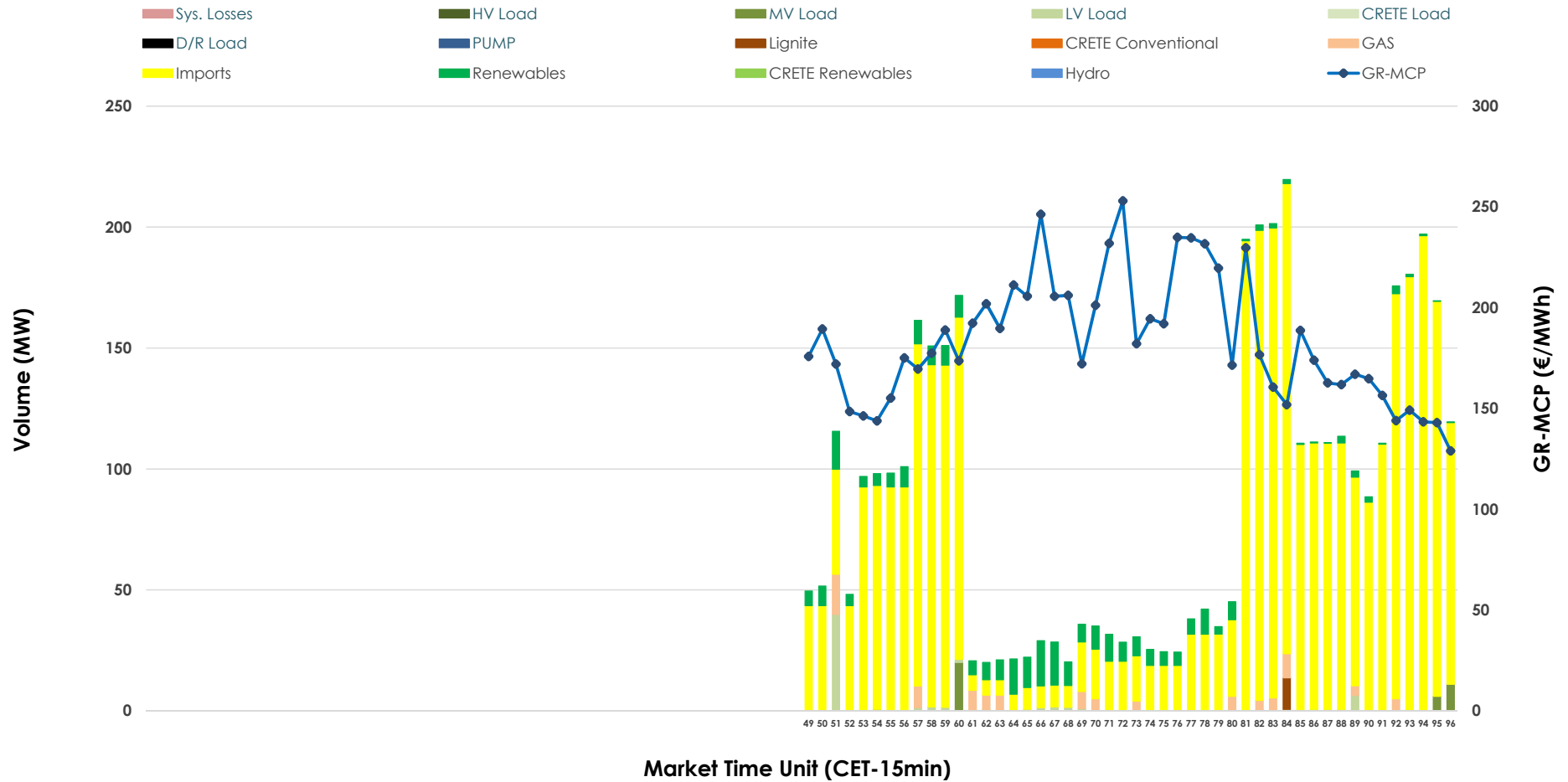


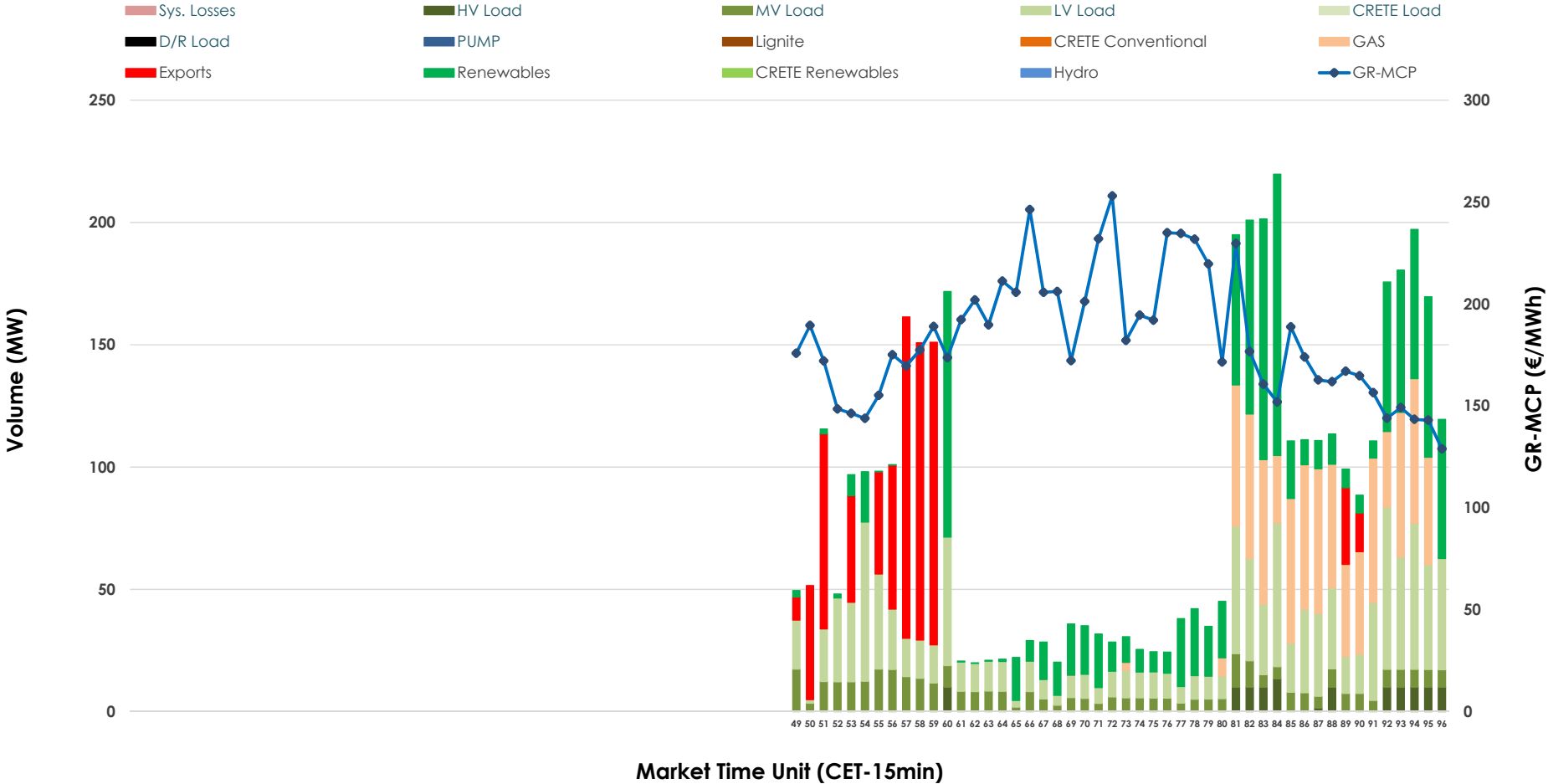


IDA '3' Market Outlook

21.01.2026 IDA '3' Market - Sell



21.01.2026 IDA '3' Market - Buy



GR Bidding Zone Weekly Figures

Delivery Day	15.01	16.01	17.01	18.01	19.01	20.01	21.01
	→ 0%	↘ -14%	↘ -29%	↗ 4%	↗ 6%	↗ 14%	↗ 46%
Avg.MCP (€/MWh)	163.04	140.32	99.83	103.62	110.20	125.64	183.28
Max.MCP (€/MWh)	298.96	210.22	145.94	153.01	170.45	214.20	253.03
Min.MCP (€/MWh)	81.59	89.67	78.38	76.30	77.71	41.02	128.93
	↗ 437%	↘ -73%	↗ 27%	↗ 34%	↘ -53%	↗ 93%	↗ 4%
Tot.Vol(GWh)	4.97	1.33	1.69	2.26	1.06	2.05	2.14

Trades by Order Type

Delivery Day		15.01	16.01	17.01	18.01	19.01	20.01	21.01	
Ord Price Type		Sell & Buy Trades in (GWh) per Price Type							(%)
PPT	(S)	0.000	0.000	0.000	0.000	0.000	0.000	0.000	0.00%
HBD	(S)	1.816	0.420	0.828	0.964	0.325	1.017	0.126	11.77%
BLK	(S)	0.000	0.000	0.000	0.000	0.000	0.000	0.000	0.00%
CPL	(S)	0.667	0.247	0.016	0.164	0.207	0.009	0.943	88.23%
PPT	(B)	0.000	0.000	0.000	0.000	0.000	0.000	0.000	0.00%
HBD	(B)	2.465	0.501	0.844	1.073	0.532	0.468	0.893	83.54%
BLK	(B)	0.000	0.000	0.000	0.000	0.000	0.000	0.000	0.00%
CPL	(B)	0.018	0.166	0.000	0.056	0.000	0.558	0.176	16.46%
		Sell & Buy Orders Traded per Price Type							(%)
PPT	(S)	0	0	0	0	0	0	0	0.00%
HBD	(S)	221	95	198	158	126	241	115	100.00%
BLK	(S)	0	0	0	0	0	0	0	0.00%
PPT	(B)	0	0	0	0	0	0	0	0.00%
HBD	(B)	239	291	289	271	214	113	252	100.00%
BLK	(B)	0	0	0	0	0	0	0	0.00%

- MCP** Market Clearing Price (€/MWh)
- PPT** Priority Price-Taking
- HBD** Hybrid
- BLK** Block
- CPL** Market Coupling Flow

Trade's Volume Mix

	Sell - MWh	Buy - MWh	
Lignite (0.3%)	3	0	(0.0%)
Crete Conv. (0.0%)	0	0	(0.0%)
Gas (2.2%)	24	194	(18.1%)
Hydro (0.0%)	0	0	(0.0%)
Imports (88.2%)	943		
RES (6.9%)	74	284	(26.6%)
Crete RES (0.0%)	0	0	(0.0%)
HV Load (0.0%)	0	29	(2.7%)
MV Load (0.9%)	9	96	(9.0%)
LV Load (1.5%)	16	290	(27.2%)
Crete Load (0.0%)	0	0	(0.0%)
Pumping (0.0%)	0	0	(0.0%)
Exports		176	(16.5%)
Sys.Losses (0.0%)	0	0	(0.0%)
D/R Load (0.0%)	0	0	(0.0%)

