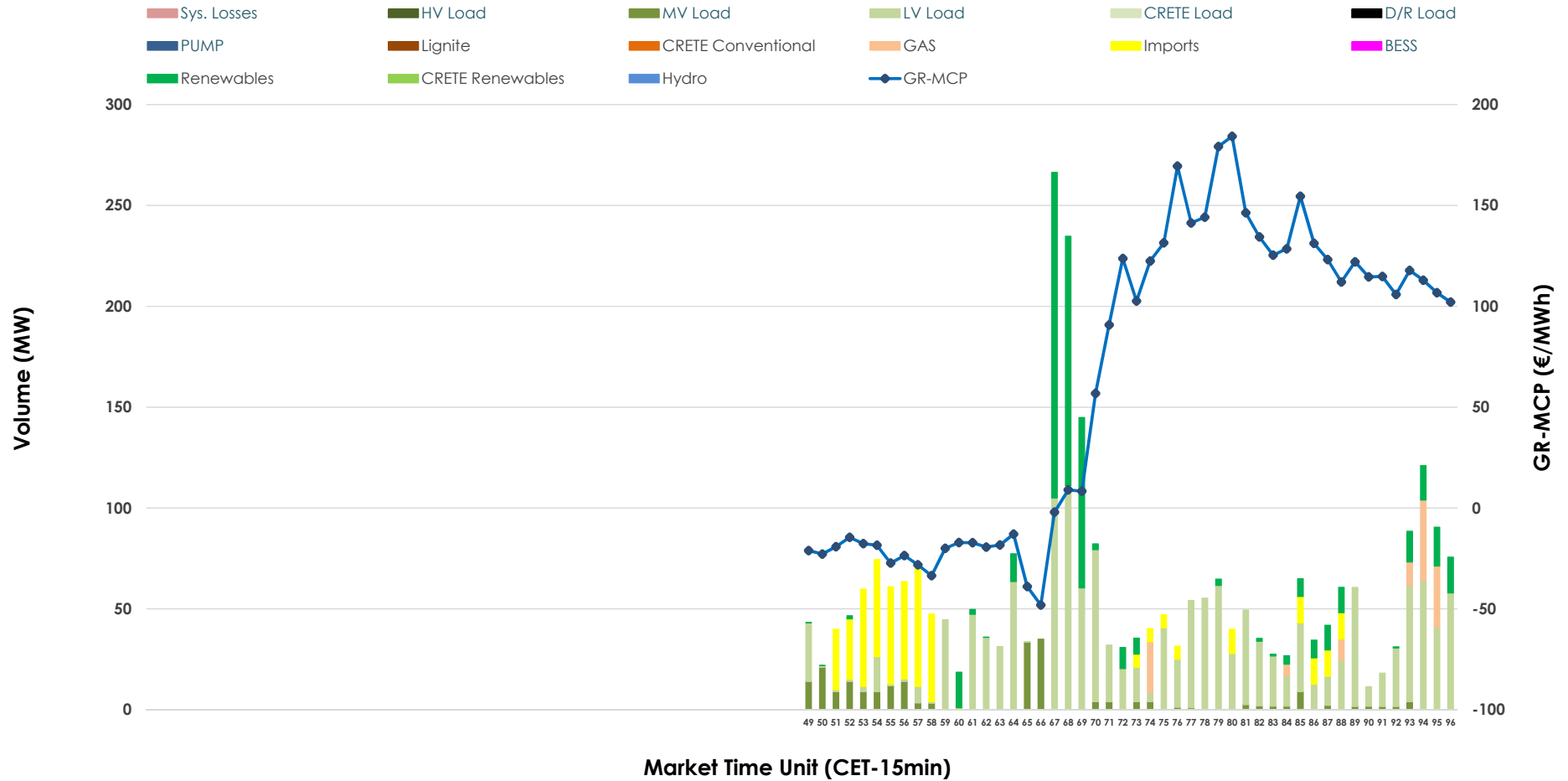


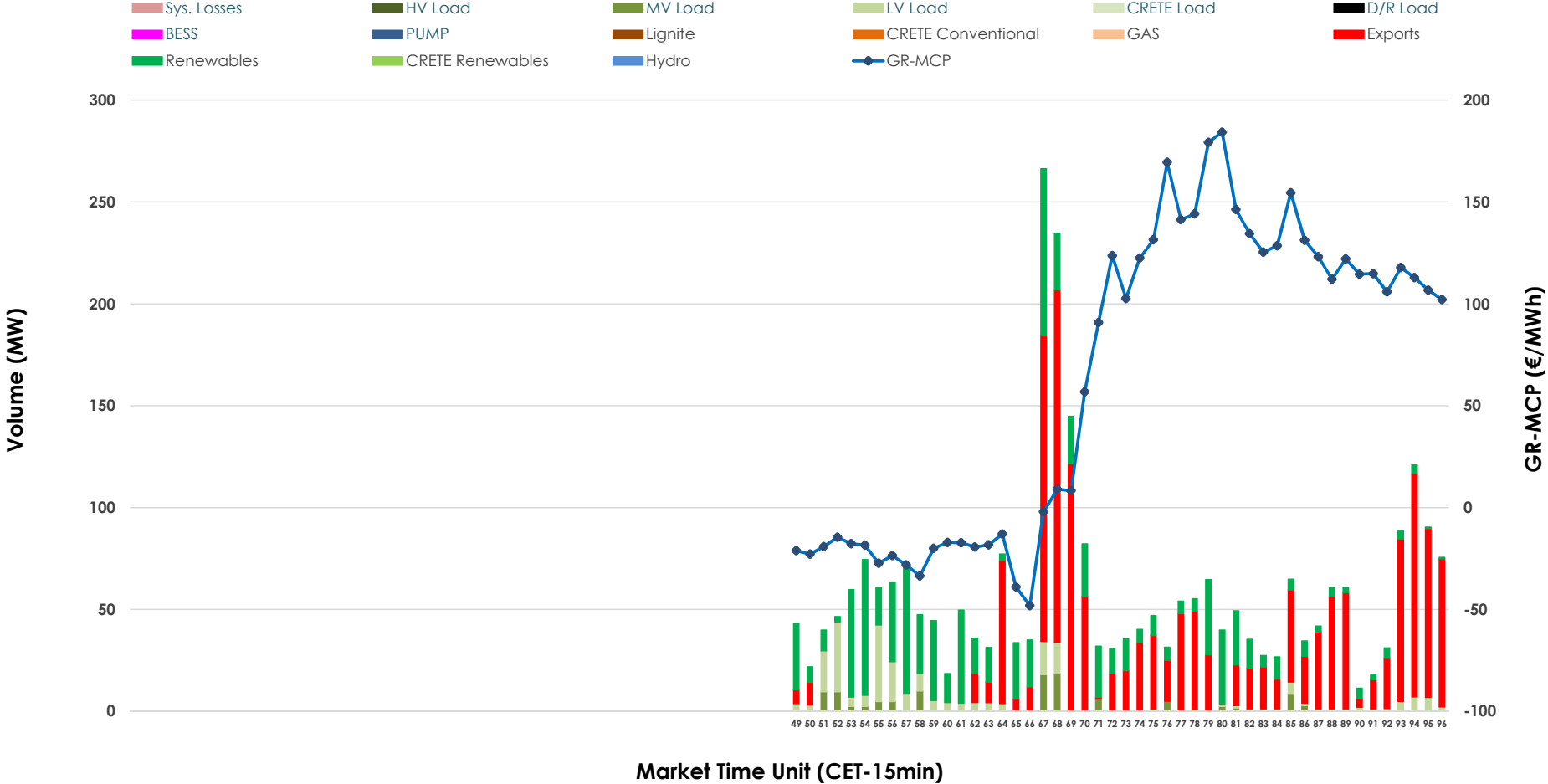


# IDA '3' Market Outlook

07.04.2026 IDA '3' Market - Sell



07.04.2026 IDA '3' Market - Buy



### GR Bidding Zone Weekly Figures

Delivery Day	01.04	02.04	03.04	04.04	05.04	06.04	07.04
			👇 -3%	👇 -65%	👇 -54%	👆 102%	👆 44%
<b>Avg.MCP (€/MWh)</b>	N/M	136.63	132.06	46.59	21.49	43.45	62.41
<b>Max.MCP (€/MWh)</b>	N/M	190.13	203.39	129.90	97.54	191.43	184.28
<b>Min.MCP (€/MWh)</b>	N/M	104.38	59.05	-11.64	-65.92	-123.91	-48.10
			👇 -17%	👇 -30%	👇 -69%	👆 115%	👇 -14%
<b>Tot.Vol(GWh)</b>	N/M	4.25	3.55	2.49	0.77	1.65	1.43

### Trades by Order Type

Delivery Day		01.04	02.04	03.04	04.04	05.04	06.04	07.04		
Ord Price Type		Sell & Buy Trades in (GWh) per Price Type							(%)	
<b>PPT</b>	(S)		0.000	0.000	0.000	0.000	0.000	0.000	0.00%	
<b>HBD</b>	(S)		0.189	0.695	1.245	0.338	0.322	0.601	84.34%	
<b>BLK</b>	(S)		0.000	0.000	0.000	0.000	0.000	0.000	0.00%	
<b>CPL</b>	(S)		1.938	1.080	0.000	0.046	0.503	0.112	15.66%	
<b>PPT</b>	(B)		0.000	0.000	0.000	0.000	0.000	0.000	0.00%	
<b>HBD</b>	(B)		1.640	0.807	0.126	0.200	0.768	0.321	45.07%	
<b>BLK</b>	(B)		0.000	0.000	0.000	0.000	0.000	0.000	0.00%	
<b>CPL</b>	(B)		0.487	0.968	1.120	0.184	0.057	0.392	54.93%	
			Sell & Buy Orders Traded per Price Type							(%)
<b>PPT</b>	(S)		0	0	0	0	0	0	0.00%	
<b>HBD</b>	(S)		143	309	206	130	65	141	100.00%	
<b>BLK</b>	(S)		0	0	0	0	0	0	0.00%	
<b>PPT</b>	(B)		0	0	0	0	0	0	0.00%	
<b>HBD</b>	(B)		412	283	112	130	197	112	100.00%	
<b>BLK</b>	(B)		0	0	0	0	0	0	0.00%	

- MCP** Market Clearing Price (€/MWh)
- PPT** Priority Price-Taking
- HBD** Hybrid
- BLK** Block
- CPL** Market Coupling Flow

### Trade's Volume Mix

	Sell - MWh	Buy - MWh	
<b>Lignite</b> (0.0%)	0	0	(0.0%)
<b>Crete Conv.</b> (0.0%)	0	0	(0.0%)
<b>Gas</b> (4.3%)	31	0	(0.0%)
<b>Hydro</b> (0.0%)	0	0	(0.0%)
<b>Imports</b> (15.7%)	112		
<b>RES</b> (19.2%)	137	233	(32.7%)
<b>Crete RES</b> (0.0%)	0	0	(0.0%)
<b>BESS</b> (0.0%)	0	0	(0.0%)
<b>HV Load</b> (0.0%)	0	0	(0.0%)
<b>MV Load</b> (7.9%)	56	27	(3.8%)
<b>LV Load</b> (52.9%)	378	61	(8.6%)
<b>Crete Load</b> (0.0%)	0	0	(0.0%)
<b>Pumping</b> (0.0%)	0	0	(0.0%)
<b>Exports</b>		392	(54.9%)
<b>Sys.Losses</b> (0.0%)	0	0	(0.0%)
<b>D/R Load</b> (0.0%)	0	0	(0.0%)

