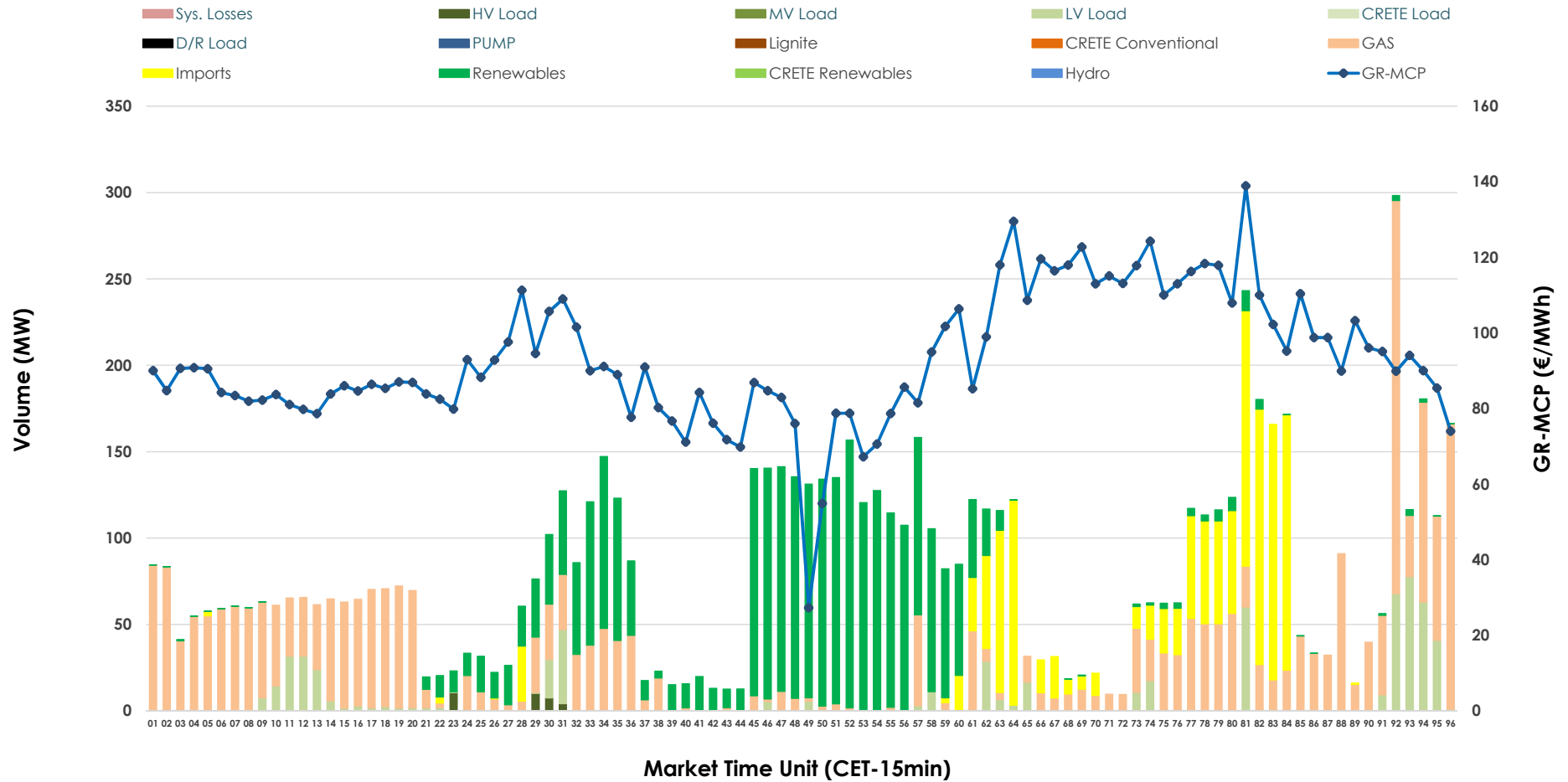


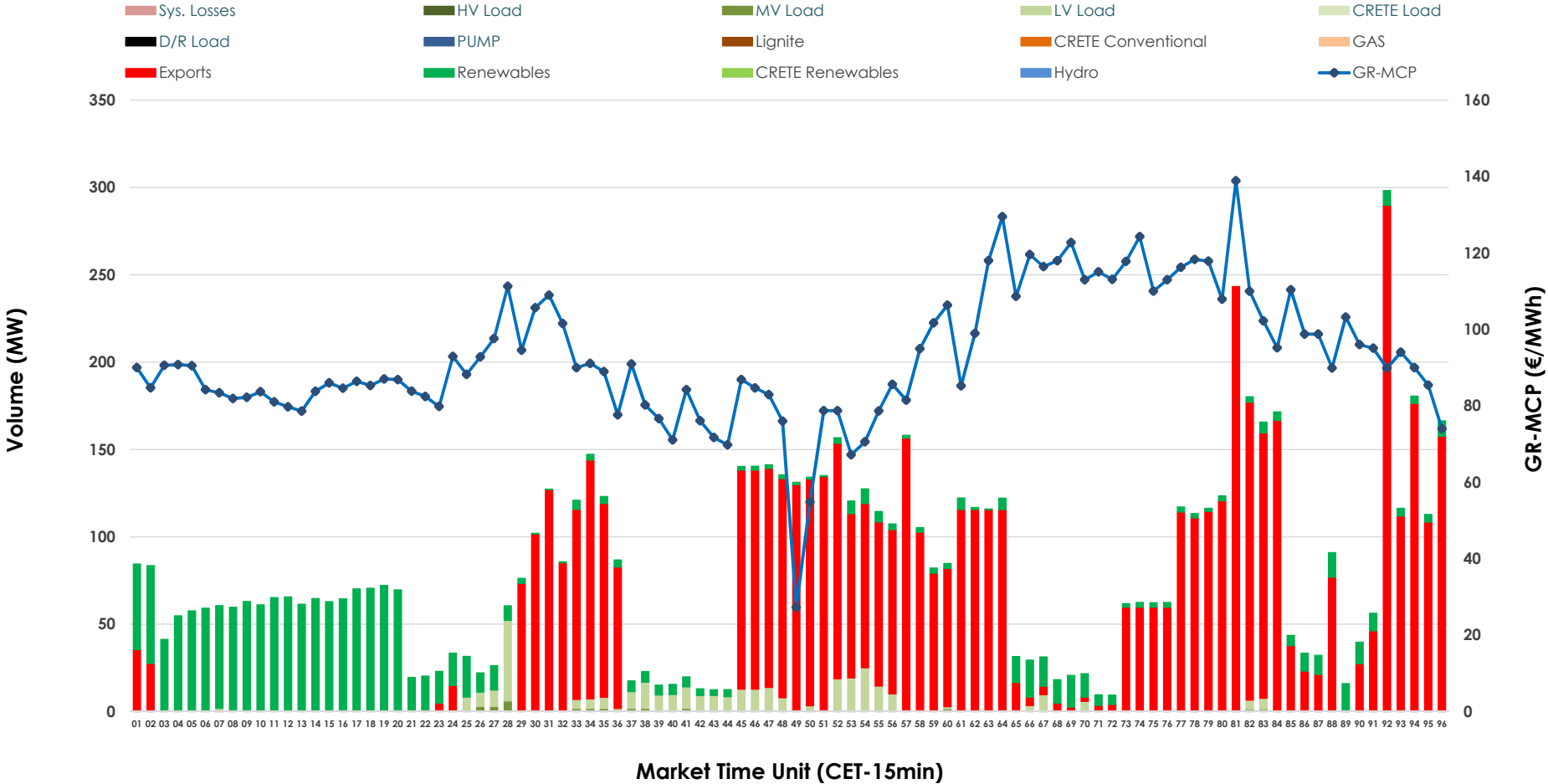


IDA '2' Market Outlook

02.01.2026 IDA '2' Market - Sell



02.01.2026 IDA '2' Market - Buy



GR Bidding Zone Weekly Figures

Delivery Day	27.12	28.12	29.12	30.12	31.12	01.01	02.01
	👇 -3%	👇 -13%	👆 21%	👇 -5%	👆 3%	👇 -28%	👆 32%
Avg.MCP (€/MWh)	95.49	82.93	100.09	95.27	98.28	70.62	92.94
Max.MCP (€/MWh)	152.02	118.00	158.62	144.17	181.76	119.63	138.91
Min.MCP (€/MWh)	46.40	-3.97	70.38	64.15	72.93	0.00	27.27
	👇 -50%	👇 -19%	👆 46%	👇 13%	👇 -4%	👇 -62%	👆 99%
Tot.Vol(GWh)	4.09	3.33	4.85	5.49	5.25	1.97	3.93

Trades by Order Type

Delivery Day		27.12	28.12	29.12	30.12	31.12	01.01	02.01	
Ord Price Type		Sell & Buy Trades in (GWh) per Price Type							(%)
PPT	(S)	0.000	0.000	0.000	0.000	0.000	0.000	0.000	0.00%
HBD	(S)	1.028	1.080	0.715	2.379	1.868	0.755	1.628	82.87%
BLK	(S)	0.000	0.000	0.000	0.000	0.000	0.000	0.000	0.00%
CPL	(S)	1.015	0.585	1.712	0.368	0.757	0.231	0.337	17.13%
PPT	(B)	0.000	0.000	0.000	0.000	0.000	0.000	0.000	0.00%
HBD	(B)	0.859	0.907	2.199	0.490	1.509	0.469	0.529	26.91%
BLK	(B)	0.000	0.000	0.000	0.000	0.000	0.000	0.000	0.00%
CPL	(B)	1.184	0.758	0.228	2.257	1.117	0.517	1.436	73.09%
		Sell & Buy Orders Traded per Price Type							(%)
PPT	(S)	0	0	0	0	0	0	0	0.00%
HBD	(S)	282	177	112	376	214	107	332	100.00%
BLK	(S)	0	0	0	0	0	0	0	0.00%
PPT	(B)	0	0	0	0	0	0	0	0.00%
HBD	(B)	259	285	549	189	853	255	368	100.00%
BLK	(B)	0	0	0	0	0	0	0	0.00%

MCP Market Clearing Price (€/MWh)
PPT Priority Price-Taking
HBD Hybrid
BLK Block
CPL Market Coupling Flow

Trade's Volume Mix

	Sell - MWh	Buy - MWh	
Lignite (0.0%)	0	0	(0.0%)
Crete Conv. (0.0%)	0	0	(0.0%)
Gas (39.6%)	778	0	(0.0%)
Hydro (0.0%)	0	0	(0.0%)
Imports (17.1%)	337		
RES (34.6%)	679	434	(22.1%)
Crete RES (0.0%)	0	0	(0.0%)
HV Load (0.4%)	8	0	(0.0%)
MV Load (0.0%)	0	9	(0.5%)
LV Load (8.3%)	164	86	(4.4%)
Crete Load (0.0%)	0	0	(0.0%)
Pumping (0.0%)	0	0	(0.0%)
Exports		1,436	(73.1%)
Sys.Losses (0.0%)	0	0	(0.0%)
D/R Load (0.0%)	0	0	(0.0%)

