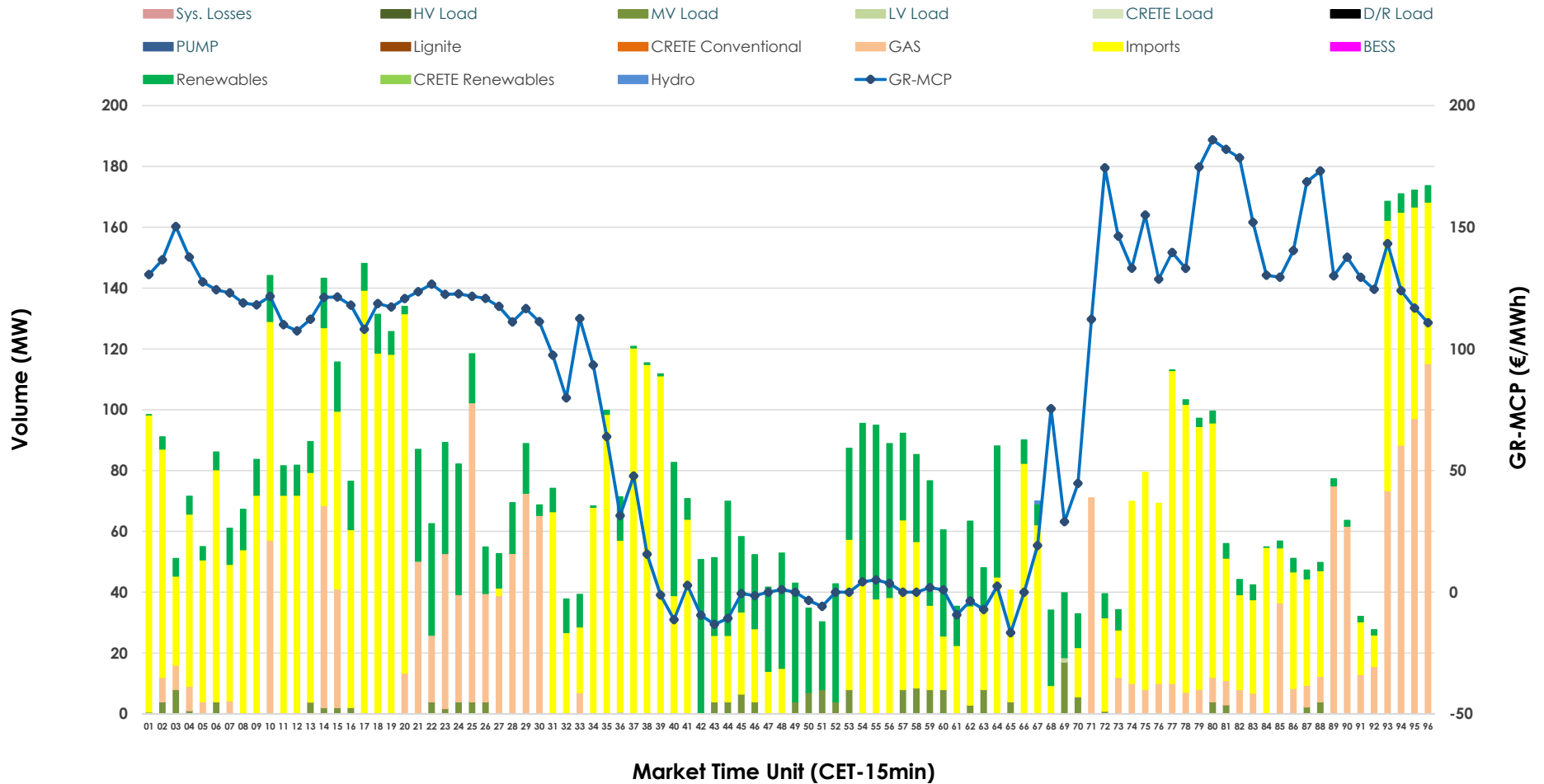


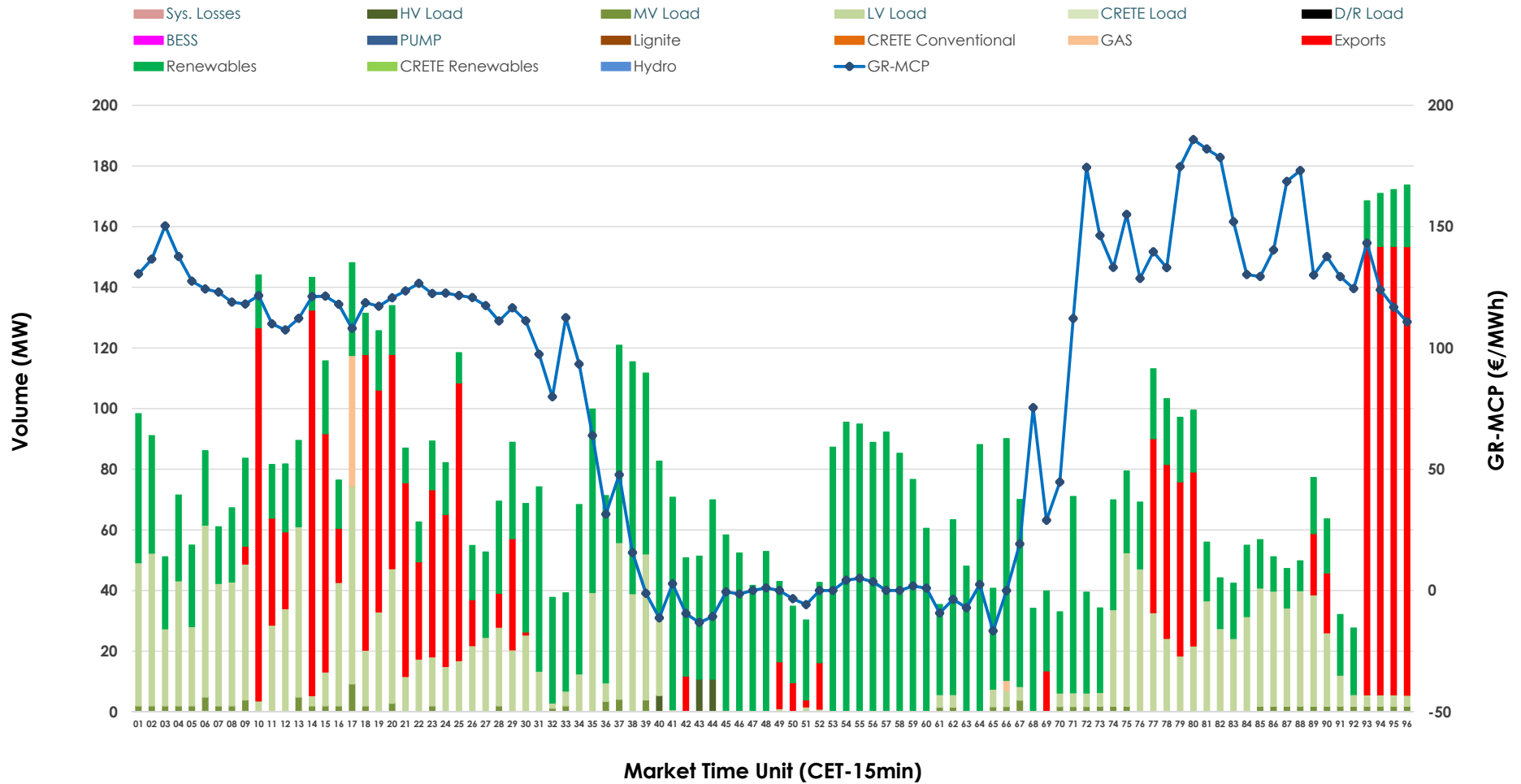


IDA '2' Market Outlook

11.04.2026 IDA '2' Market - Sell



11.04.2026 IDA '2' Market - Buy



GR Bidding Zone Weekly Figures

Delivery Day	05.04	06.04	07.04	08.04	09.04	10.04	11.04
	↓ -69%	↑ 162%	↑ 55%	↓ -2%	↑ 14%	↓ 3%	↓ -8%
Avg.MCP (€/MWh)	19.53	51.16	79.13	77.38	88.00	90.89	83.63
Max.MCP (€/MWh)	113.90	198.89	199.05	195.91	185.99	182.39	185.88
Min.MCP (€/MWh)	-50.56	-48.10	-24.00	-29.60	-20.01	-7.00	-16.65
	↑ 36%	↔ 27%	↓ -28%	↔ 17%	↔ 14%	↓ -43%	↔ 0%
Tot.Vol(GWh)	5.28	6.68	4.81	5.64	6.42	3.69	3.71

Trades by Order Type

Delivery Day		05.04	06.04	07.04	08.04	09.04	10.04	11.04	
Ord Price Type		Sell & Buy Trades in (GWh) per Price Type							(%)
PPT	(S)	0.000	0.000	0.000	0.000	0.000	0.000	0.000	0.00%
HBD	(S)	1.962	1.218	0.714	1.055	2.885	0.803	0.785	42.31%
BLK	(S)	0.000	0.000	0.000	0.000	0.000	0.000	0.000	0.00%
CPL	(S)	0.676	2.124	1.693	1.764	0.327	1.044	1.070	57.69%
PPT	(B)	0.000	0.000	0.000	0.000	0.000	0.000	0.000	0.00%
HBD	(B)	2.313	2.837	1.898	1.549	1.103	1.109	1.370	73.85%
BLK	(B)	0.000	0.000	0.000	0.000	0.000	0.000	0.000	0.00%
CPL	(B)	0.324	0.505	0.509	1.270	2.109	0.738	0.485	26.15%
		Sell & Buy Orders Traded per Price Type							(%)
PPT	(S)	0	0	0	0	0	0	0	0.00%
HBD	(S)	399	262	196	262	393	191	205	100.00%
BLK	(S)	0	0	0	0	0	0	0	0.00%
PPT	(B)	0	0	0	0	0	0	0	0.00%
HBD	(B)	430	634	632	353	526	494	633	100.00%
BLK	(B)	0	0	0	0	0	0	0	0.00%

MCP Market Clearing Price (€/MWh)
PPT Priority Price-Taking
HBD Hybrid
BLK Block
CPL Market Coupling Flow

Trade's Volume Mix

	Sell - MWh	Buy - MWh	
Lignite (0.0%)	0	0	(0.0%)
Crete Conv. (0.0%)	0	0	(0.0%)
Gas (20.3%)	376	12	(0.6%)
Hydro (0.0%)	0	0	(0.0%)
Imports (57.7%)	1,070		
RES (19.6%)	363	879	(47.4%)
Crete RES (0.0%)	0	0	(0.0%)
BESS (0.0%)	0	0	(0.0%)
HV Load (0.0%)	0	7	(0.4%)
MV Load (2.4%)	45	28	(1.5%)
LV Load (0.0%)	1	445	(24.0%)
Crete Load (0.0%)	0	0	(0.0%)
Pumping (0.0%)	0	0	(0.0%)
Exports		485	(26.2%)
Sys.Losses (0.0%)	0	0	(0.0%)
D/R Load (0.0%)	0	0	(0.0%)

