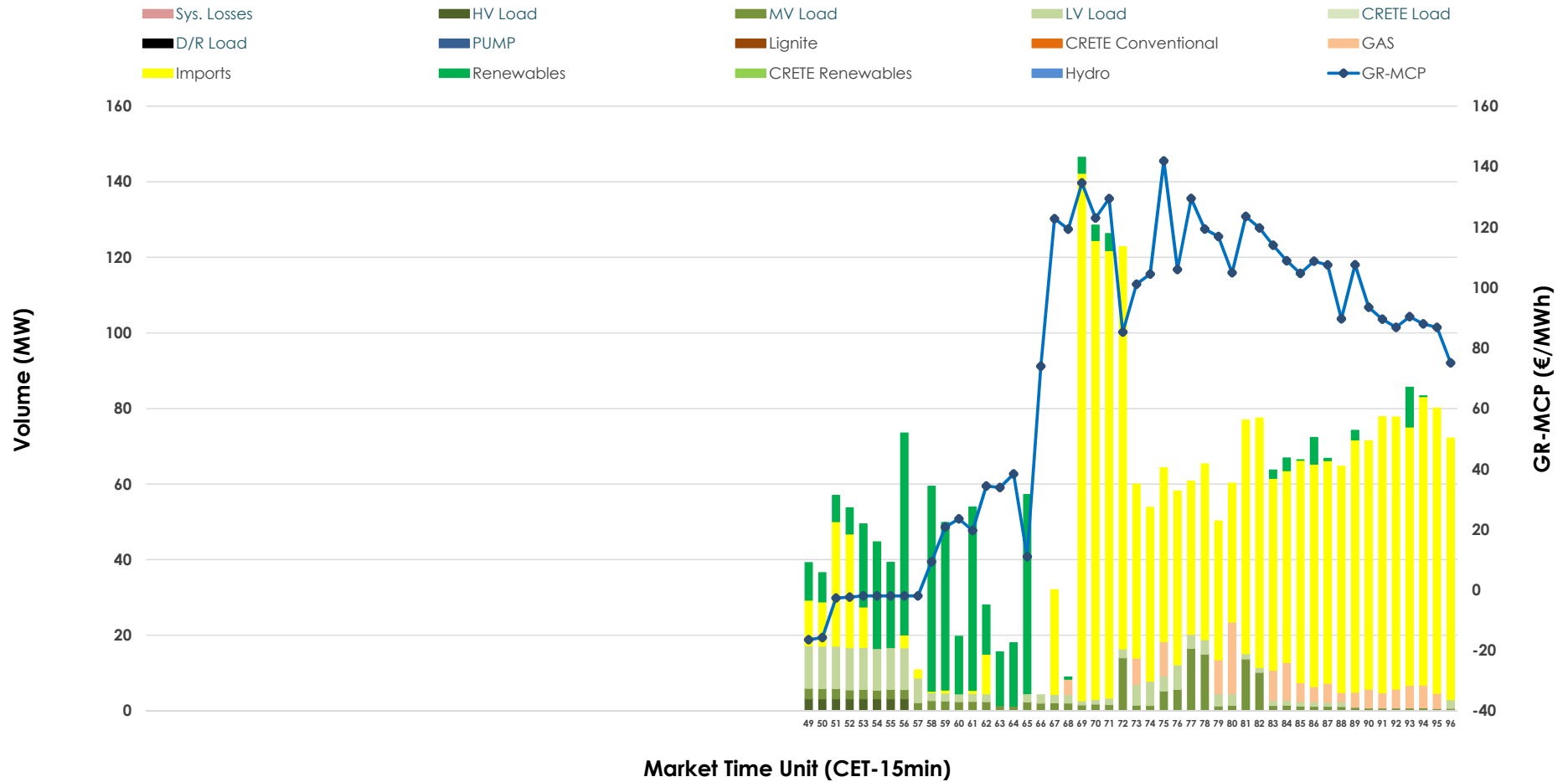


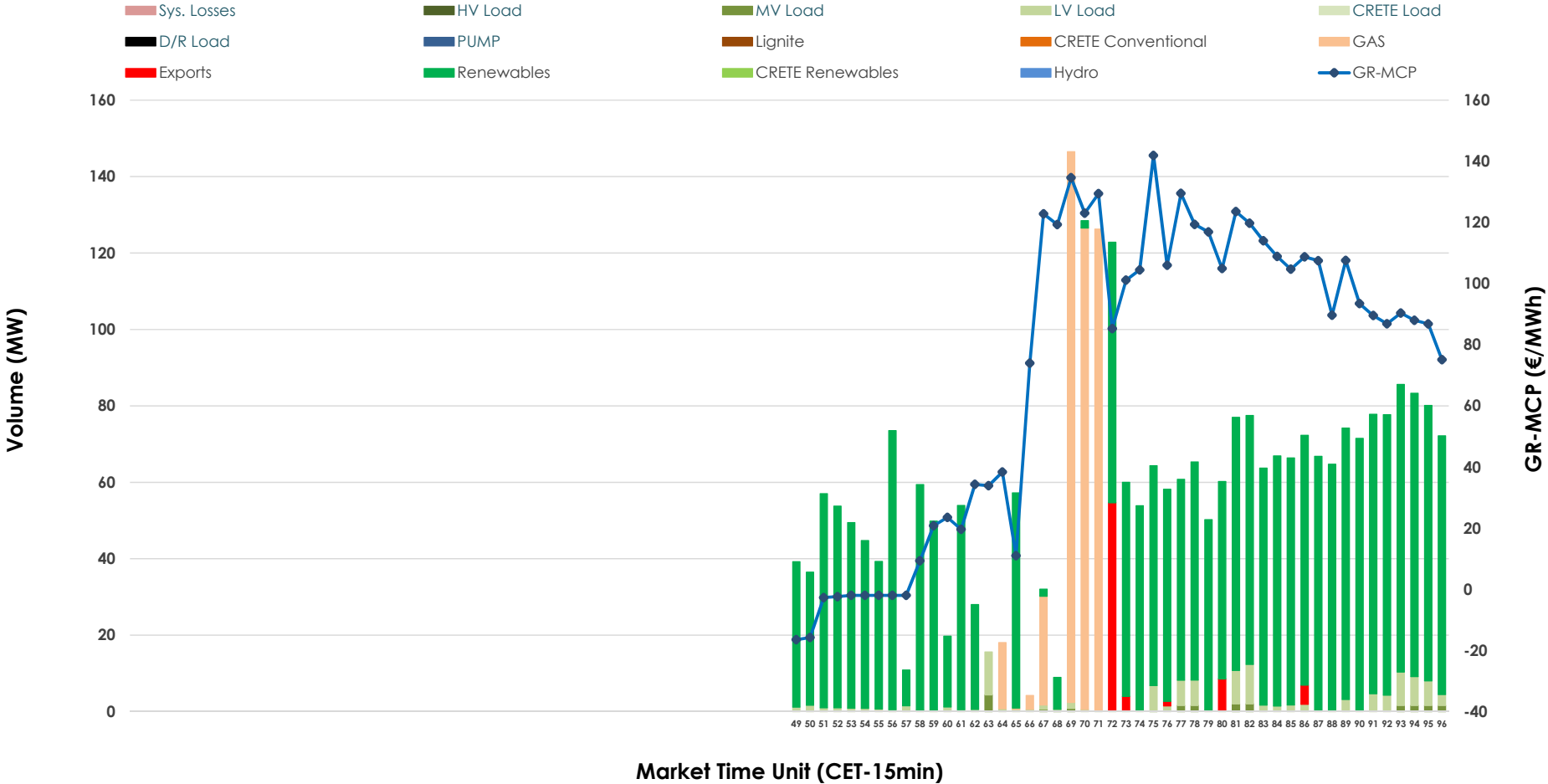


IDA '3' Market Outlook

23.02.2026 IDA '3' Market - Sell



23.02.2026 IDA '3' Market - Buy



GR Bidding Zone Weekly Figures

Delivery Day	17.02	18.02	19.02	20.02	21.02	22.02	23.02
	👇 -11%	👇 -1%	👆 5%	👆 3%	➡ 0%	👇 -33%	👆 51%
Avg.MCP (€/MWh)	67.12	66.30	69.73	71.55	71.42	47.58	71.88
Max.MCP (€/MWh)	156.53	183.02	153.38	126.38	112.00	109.84	141.90
Min.MCP (€/MWh)	-10.00	-29.99	-35.00	-8.73	-19.99	-20.00	-16.48
	👇 -28%	👇 -22%	👆 25%	👆 4%	👇 -55%	👆 43%	👇 -2%
Tot.Vol(GWh)	2.27	1.77	2.20	2.30	1.04	1.49	1.46

Trades by Order Type

Delivery Day		17.02	18.02	19.02	20.02	21.02	22.02	23.02	
Ord Price Type		Sell & Buy Trades in (GWh) per Price Type							(%)
PPT	(S)	0.000	0.000	0.000	0.000	0.000	0.000	0.000	0.00%
HBD	(S)	0.877	0.462	0.312	0.979	0.440	0.465	0.230	31.40%
BLK	(S)	0.000	0.000	0.000	0.000	0.000	0.000	0.000	0.00%
CPL	(S)	0.261	0.421	0.789	0.169	0.082	0.280	0.502	68.60%
PPT	(B)	0.000	0.000	0.000	0.000	0.000	0.000	0.000	0.00%
HBD	(B)	0.889	0.696	0.877	1.098	0.439	0.683	0.713	97.52%
BLK	(B)	0.000	0.000	0.000	0.000	0.000	0.000	0.000	0.00%
CPL	(B)	0.248	0.187	0.224	0.051	0.083	0.062	0.018	2.48%
		Sell & Buy Orders Traded per Price Type							(%)
PPT	(S)	0	0	0	0	0	0	0	0.00%
HBD	(S)	86	108	76	215	145	109	209	100.00%
BLK	(S)	0	0	0	0	0	0	0	0.00%
PPT	(B)	0	0	0	0	0	0	0	0.00%
HBD	(B)	319	395	226	286	225	269	216	100.00%
BLK	(B)	0	0	0	0	0	0	0	0.00%

- MCP** Market Clearing Price (€/MWh)
- PPT** Priority Price-Taking
- HBD** Hybrid
- BLK** Block
- CPL** Market Coupling Flow

Trade's Volume Mix

		Sell - MWh	Buy - MWh	
Lignite	(0.0%)	0	0	(0.0%)
Crete Conv.	(0.0%)	0	0	(0.0%)
Gas	(4.0%)	29	111	(15.2%)
Hydro	(0.0%)	0	0	(0.0%)
Imports	(68.6%)	502		
RES	(15.6%)	114	568	(77.6%)
Crete RES	(0.0%)	0	0	(0.0%)
HV Load	(0.9%)	6	0	(0.0%)
MV Load	(5.2%)	38	5	(0.7%)
LV Load	(5.8%)	43	29	(4.0%)
Crete Load	(0.0%)	0	0	(0.0%)
Pumping	(0.0%)	0	0	(0.0%)
Exports			18	(2.5%)
Sys.Losses	(0.0%)	0	0	(0.0%)
D/R Load	(0.0%)	0	0	(0.0%)

