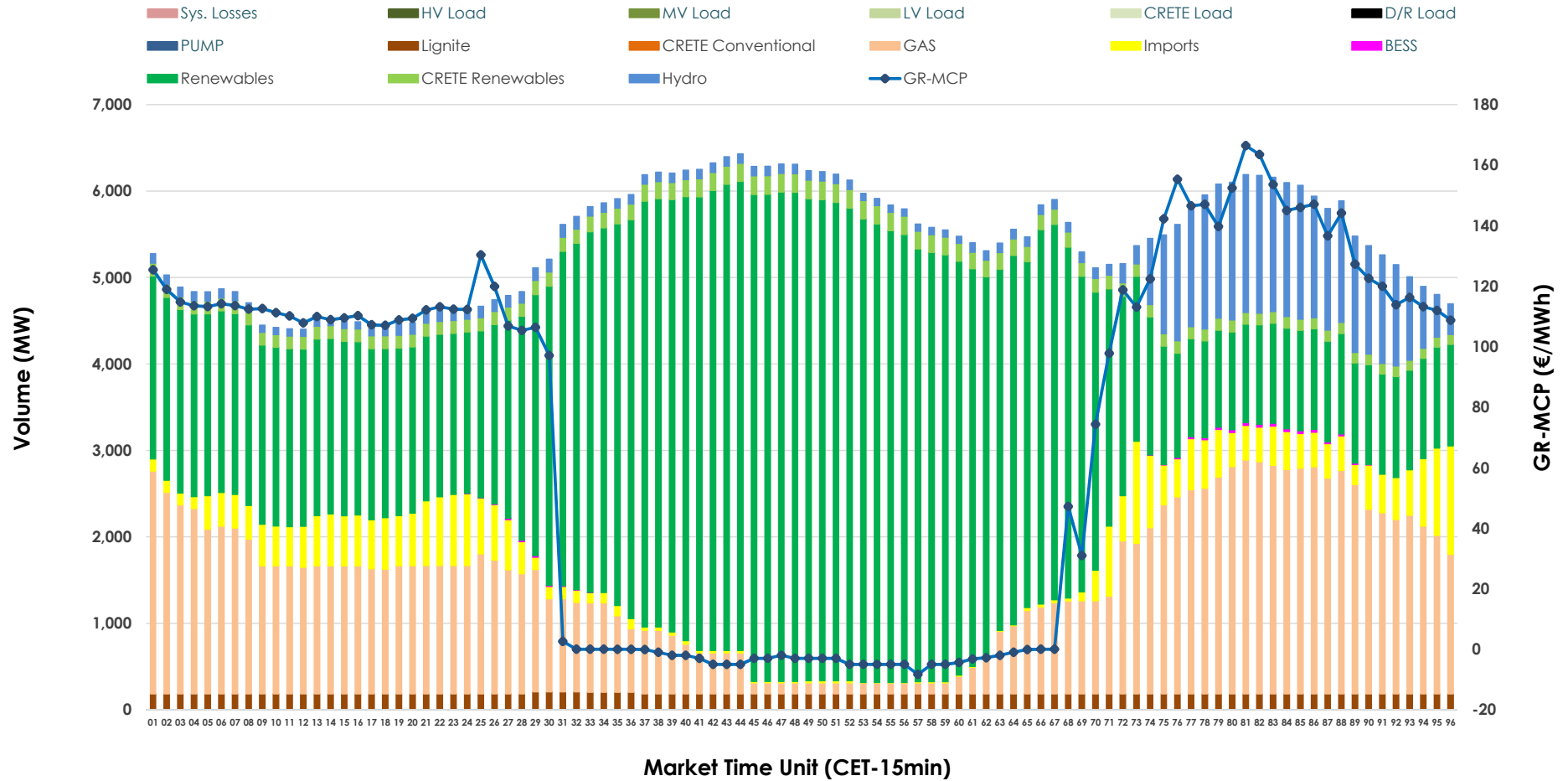


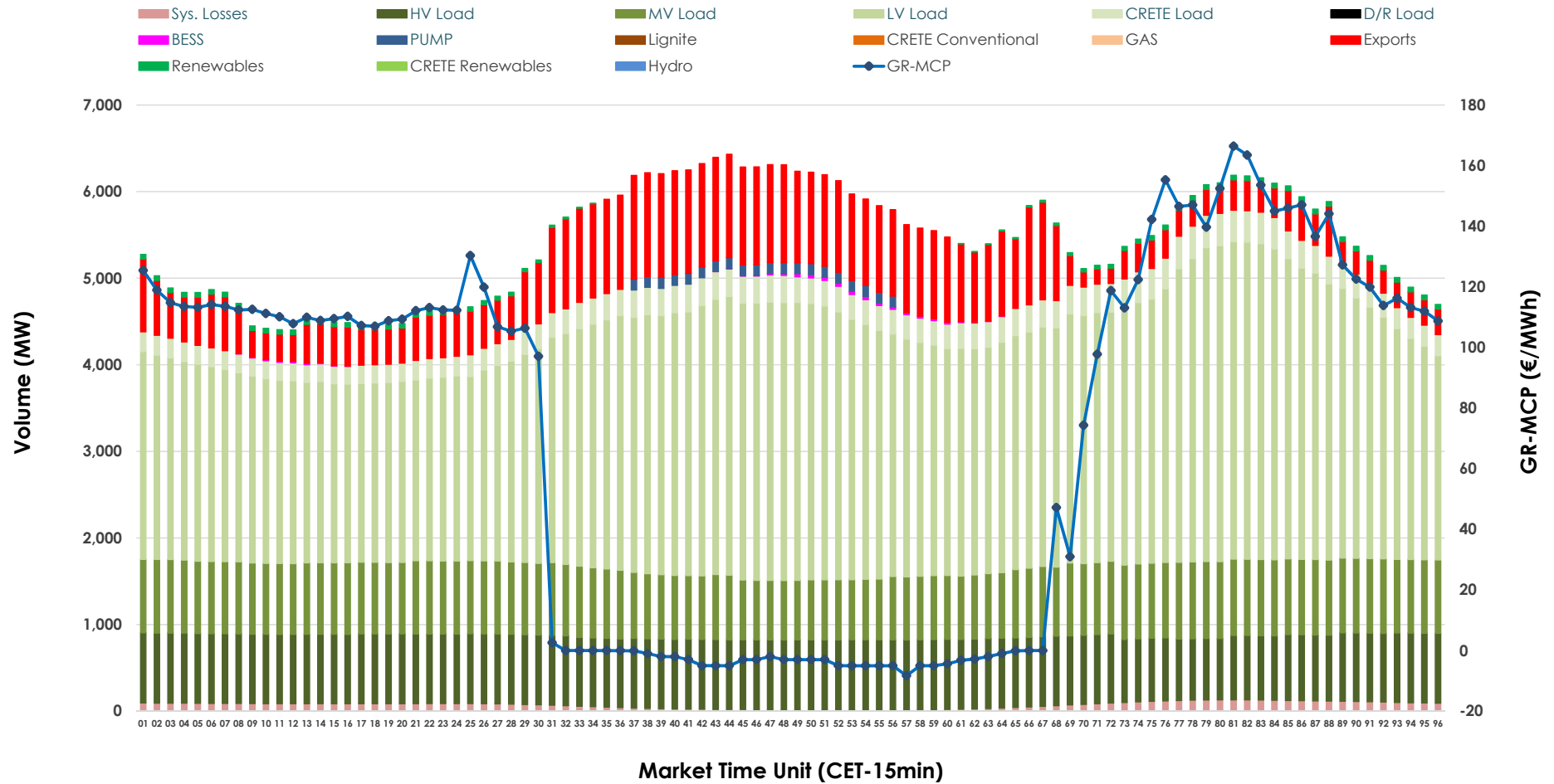


Day-Ahead Market Outlook

19.04.2026 Day-Ahead Market - Sell



19.04.2026 Day-Ahead Market - Buy



GR Bidding Zone Weekly Figures

Delivery Day	13.04	14.04	15.04	16.04	17.04	18.04	19.04
	↗ 13%	↕ 47%	↘ -5%	↘ -27%	↘ -16%	↘ -13%	↗ 6%
Avg.MCP (€/MWh)	90.06	132.81	125.87	91.60	77.40	67.33	71.68
Max.MCP (€/MWh)	167.43	245.16	176.29	214.54	167.98	151.85	166.45
Min.MCP (€/MWh)	0.00	15.01	64.00	0.00	-0.10	-9.50	-8.30
	↗ 9%	↗ 17%	↗ 5%	↗ 6%	↘ -4%	↘ -8%	↘ -11%
Tot.Vol(GWh)	254.95	298.65	312.79	331.04	318.07	292.47	260.85

Trades by Order Type

Delivery Day		13.04	14.04	15.04	16.04	17.04	18.04	19.04	
Ord Price Type		Sell & Buy Trades in (GWh) per Price Type							(%)
PPT	(S)	44.572	44.451	45.887	64.098	74.510	71.097	54.859	42.06%
HBD	(S)	54.680	66.771	65.234	74.728	66.668	58.837	50.588	38.79%
BLK	(S)	21.227	33.965	35.606	24.879	17.787	15.650	19.613	15.04%
CPL	(S)	6.996	4.140	9.669	1.814	0.070	0.653	5.365	4.11%
PPT	(B)	12.074	12.075	12.730	13.676	12.831	12.306	11.769	9.02%
HBD	(B)	104.111	127.172	133.448	134.083	130.557	119.439	111.146	85.22%
BLK	(B)	0.000	0.000	0.000	0.000	0.000	0.000	0.000	0.00%
CPL	(B)	11.289	10.080	10.218	17.760	15.647	14.493	7.510	5.76%
		Sell & Buy Orders Traded per Price Type							(%)
PPT	(S)	1461	1495	1488	1493	1585	1502	1522	36.95%
HBD	(S)	2768	3229	3247	2815	2550	2380	2585	62.76%
BLK	(S)	13	19	16	13	10	8	12	0.29%
PPT	(B)	2349	2309	2317	2353	2363	2270	2258	35.39%
HBD	(B)	4291	4088	4131	4190	4224	4214	4123	64.61%
BLK	(B)	0	0	0	0	0	0	0	0.00%

- MCP** Market Clearing Price (€/MWh)
- PPT** Priority Price-Taking
- HBD** Hybrid
- BLK** Block
- CPL** Market Coupling Flow

Trade's Volume Mix

		Sell - MWh	Buy - MWh	
Lignite	(3.4%)	4,433	0	(0.0%)
Crete Conv.	(0.0%)	0	0	(0.0%)
Gas	(24.5%)	31,995	0	(0.0%)
Hydro	(7.1%)	9,309	0	(0.0%)
Imports	(6.0%)	7,801		
RES	(55.8%)	72,818	791	(0.6%)
Crete RES	(3.0%)	3,949	0	(0.0%)
BESS	(0.1%)	119	139	(0.1%)
HV Load	(0.0%)	0	19,025	(14.6%)
MV Load	(0.0%)	0	19,396	(14.9%)
LV Load	(0.0%)	0	65,922	(50.5%)
Crete Load	(0.0%)	0	6,829	(5.2%)
Pumping	(0.0%)	0	625	(0.5%)
Exports			16,001	(12.3%)
Sys.Losses	(0.0%)	0	1,695	(1.3%)
D/R Load	(0.0%)	0	0	(0.0%)

